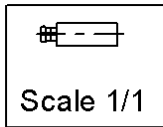
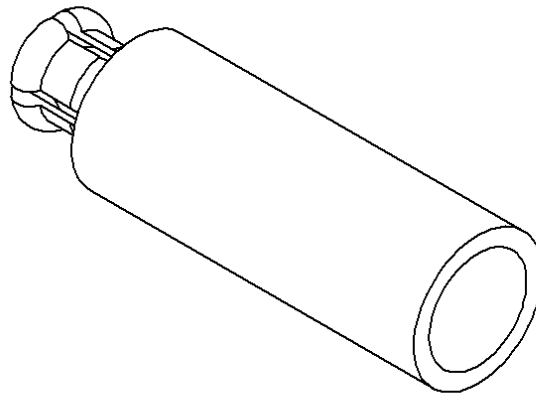
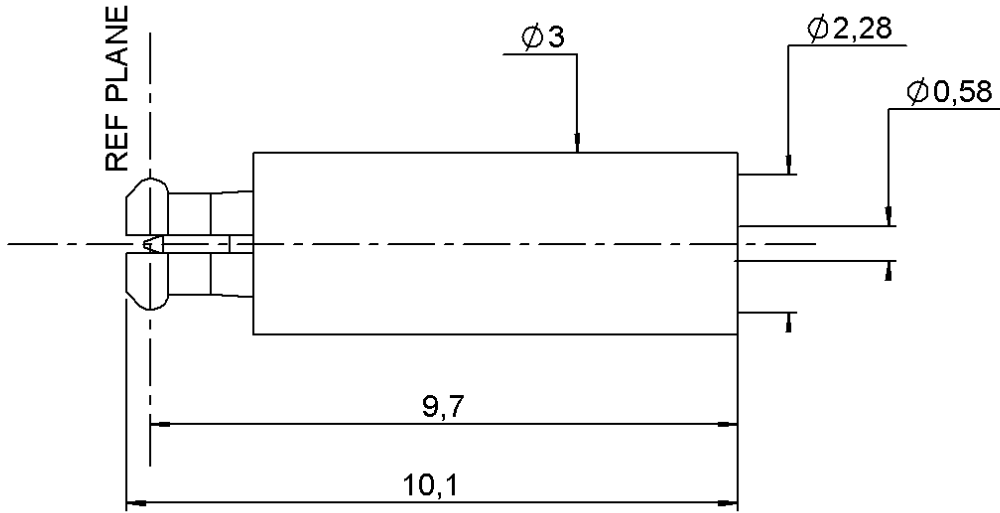


STRAIGHT PLUG SOLDER TYPE
ON CABLE .085

R199.005.233

Series : MC-CARD



All dimensions are in mm.



COMPONENTS	MATERIALS	PLATINGS (µm)
BODY	BRASS	GOLD 0.5 OVER NICKEL 2
CENTER CONTACT	BRASS	GOLD 1.3 OVER NICKEL 2
OUTER CONTACT	BERYLLIUM COPPER	GOLD 1.3 OVER NICKEL 2
INSULATOR	PTFE	
GASKET	-	-
OTHERS PARTS	-	-
-	-	-
-	-	-

Issue : 0711 C

In the effort to improve our products, we reserve the right to make changes judged to be necessary.



**STRAIGHT PLUG SOLDER TYPE
ON CABLE .085**

R199.005.233

Series : MC-CARD

PACKAGING

Standard	Unit	Other
100	W option	Contact us

SPECIFICATION

ELECTRICAL CHARACTERISTICS

Impedance	50	Ω
Frequency	0-8	GHz
VSWR	1.15 + 0,0150	x F(GHz) Maxi
Insertion loss	.07	\sqrt{F} (GHz) dB Maxi
RF leakage	- (65)	- F(GHz)) dB Maxi
Voltage rating	170	Veff Maxi
Dielectric withstanding voltage	500	Veff mini
Insulation resistance	5000	M Ω mini

CABLE ASSEMBLY

Stripping	a	b	c	d	e	f
mm	1,78	0,00	0,00	0,00	0,00	0,00

Assembly instruction :

Recommended cable(s)
RG 405
BELN 1671A

Cable retention

- pull off	136	N mini
- torque	NA	N.cm

MECHANICAL CHARACTERISTICS

Center contact retention		
Axial force – Mating end	NA	N mini
Axial force – Opposite end	NA	N mini
Torque	NA	N.cm mini

TOOLING

Part Number	Description	Hexagon
.	.	.
R282.051.000	STRIPPING TOOL	-
R282.062.000	POINTER GAUGE	Long 1.75

Recommended torque		
Mating	NA	N.cm
Panel nut	NA	N.cm
Clamp nut	NA	N.cm
A/F clamp nut	0,0000	mm

Mating life	0	Cycles mini
Weight	0,2900	g

OTHERS CHARACTERISTICS

-

ENVIRONMENTAL

Operating temperature	-65/+105	$^{\circ}$ C
Hermetic seal	NA	Atm.cm3/s
Panel leakage	NA	

Issue : 0711 C

In the effort to improve our products, we reserve the right to make changes judged to be necessary.



**STRAIGHT PLUG SOLDER TYPE
ON CABLE .085**

R199.005.233

Series : MC-CARD

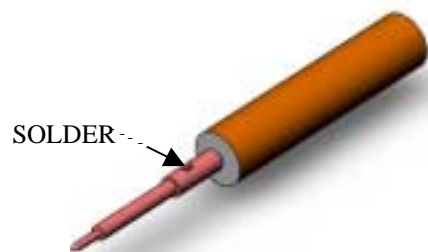


We recommend a cable thermal preconditioning before assembly.

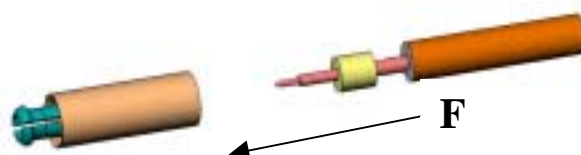
- 1 - Strip the cable**
- Clean the cable



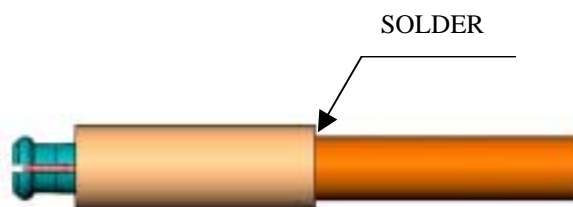
- 2 - Solder the cable inner conductor**
- into center contact.



- 3 - Slide the insulator on the center contact and slide sub-assembly into the connector body (in direction F)**



- 4 - Solder the cable into body of connector.**
- After cooling clean soldering area.



Issue : 0711 C

In the effort to improve our products, we reserve the right to make changes judged to be necessary.

