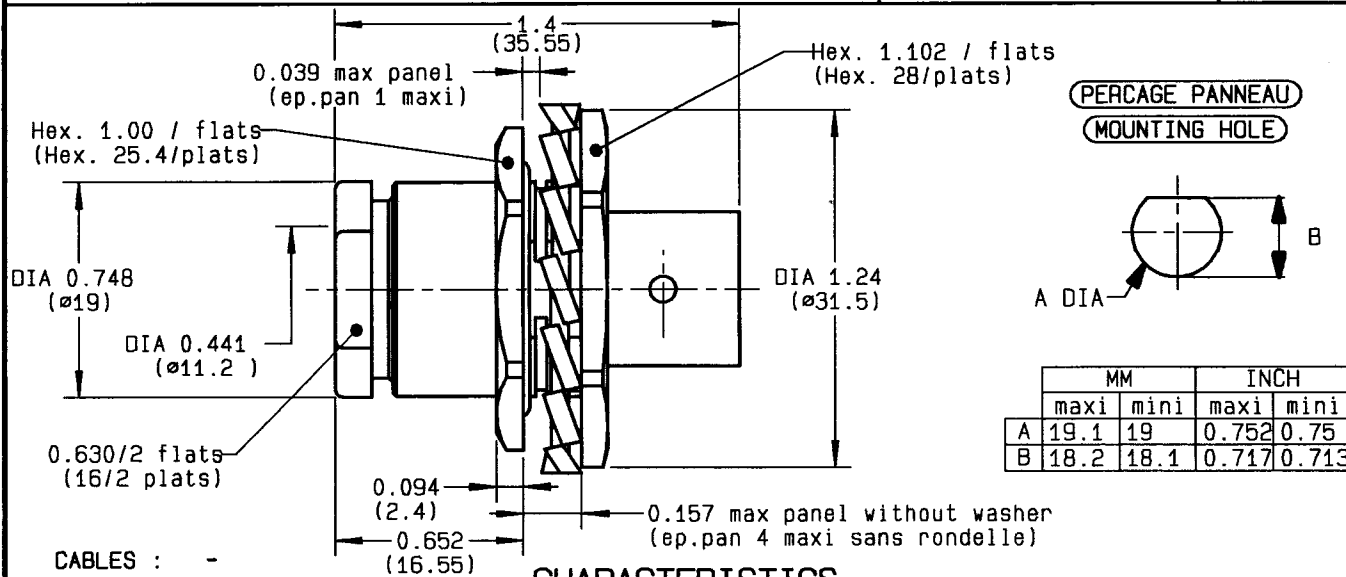


**STRAIGHT BULKHEAD JACK-CLAMP
PANEL SEAL CABLE 10+11/50**



CHARACTERISTICS

NOMINAL IMPEDANCE	50	Ω
FREQUENCY RANGE	0-3	GHz
TEMPERATURE RATING	-55/+155	°C
VSWR	1.22 +	0 x F(GHz)Maxi
RF INSERTION LOSS	TBD	√F(GHz) dB Maxi
VOLTAGE RATING	1000	Vrms Max
DIELECTRIC WITHSTANDING VOLTAGE	3000	Vrms min
INSULATION RESISTANCE	5000	M Ω min
HERMETIC SEAL	-	cc/s Atm.cm3/s
LEAKAGE (pressurized only)	-	psi MPa
WEIGHT	1.9643	Oz g

STANDARDISATION	-
CABLE RETENTION	67.36 / 300 lb m'n N
CENTER CONTACT RETENTION	-
Axial force - mating end	0 NA lb min N
Axial force - opposite end	C NA lb min N
Torque (Min)	C NA Inch.oz cm.N
RECOMMENDED TORQUES	-
Mating	0 NA inch lb cm.N
Panel nut	30.97 / 350 inch lb cm.N
Clamp nut	70.8 / 800 inch lb cm.N

CONSTRUCTION

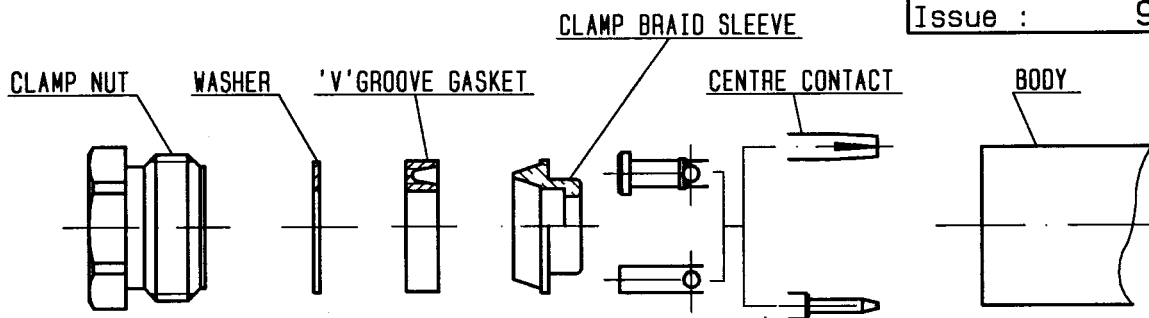
CONNECTOR PARTS	MATERIALS	FINISH
BODY	BRASS	NICKEL
OUTER CONTACT	-	-
CENTER CONTACT	BERYLLIUM COPPER	GOLD
INSULATOR	PTFE	-
-	-	-
-	-	-
-	-	-
-	-	-
-	-	-

ISSUE	REVISION No	DESCRIPTION	BY	DATE
-	-	-	-	-
-	-	-	-	-
-	-	-	-	-
-	-	-	-	-

Initiated on 16/12/94
Approval by BAFFERT

The information given here is subject to change without notice. Design changes may be in order to improve the product.

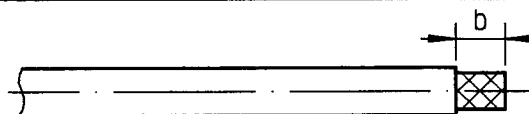




①

Strip the cable .

-
-
-

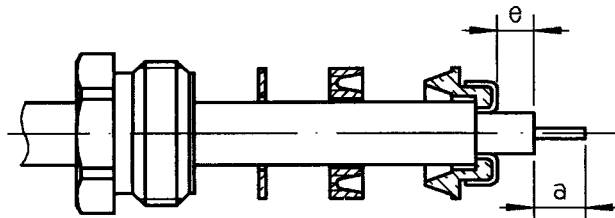


Stripping	a	b	c	d	e
inch	0.157	0.295	0	0	0.059
mm	4	7.5	-	-	1.5

②

Slide the clamp nut , the washer and the 'V'groove gasket onto the cable .
Slide clamp braid sleeve over braid .
Fold back braid and trim off surplus braid .
Trim back dielectric as shown .

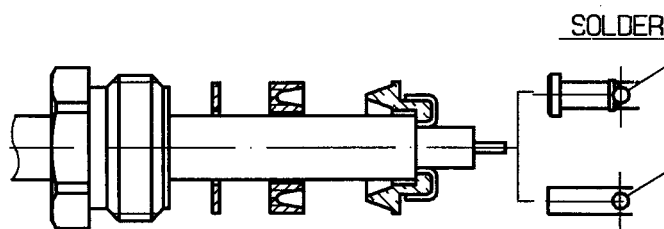
-
-
-



③

Solder the cable inner conductor into centre contact .

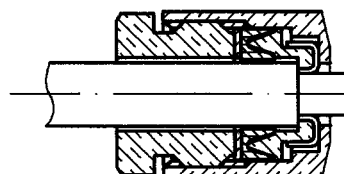
-
-
-
-
-



④

Screw sub-assembly into the connector body .
(recommended coupling torque 70.8 in.lb)

-
-



Hex. : 0.63/flats