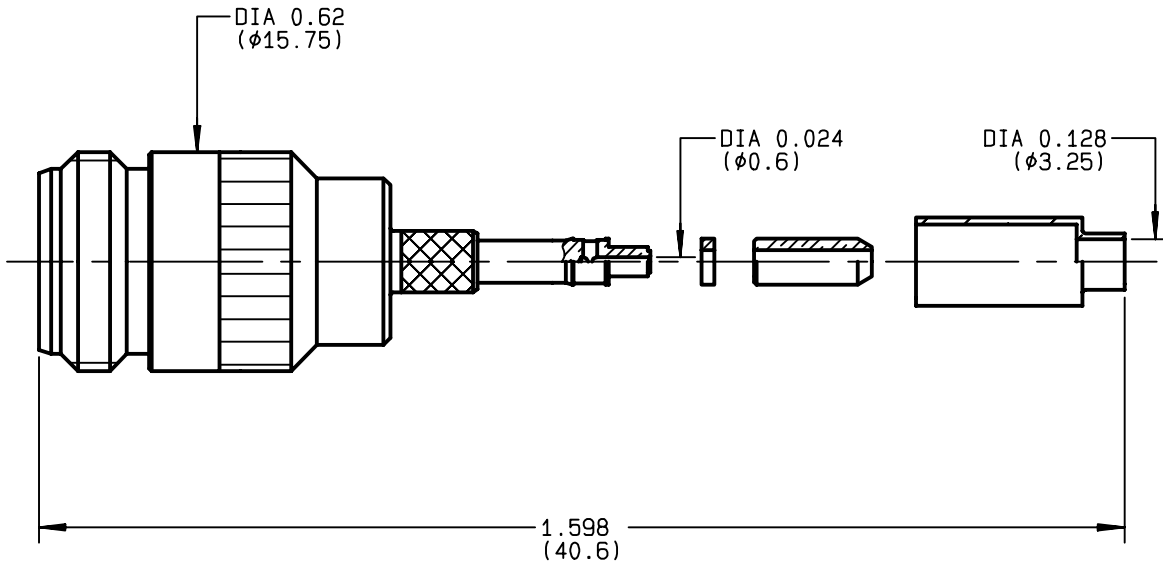


**STRAIGHT JACK FULL CRIMP-TYPE
CABLE 2.6/50 S+D - PACK. 50**

R161.236.000
SERIES N



| | | |
|---------------------------------|----------------------------------|---|
| NOMINAL IMPEDANCE | 50 Ω | CABLES : K02252D KX 22A RD 316 RG 188 RG 316 |
| FREQUENCY RANGE | 0-11 GHz | |
| TEMPERATURE RATING | -55/+155 °C | |
| V.S.W.R | 1.30 + x F(GHz)Maxi | |
| RF INSERTION LOSS | 0.048 √F(GHz) dB Maxi | |
| VOLTAGE RATING | 250 Veff Maxi | |
| DIELECTRIC WITHSTANDING VOLTAGE | 750 Veff Mini | |
| INSULATION RESISTANCE | 5000 MΩMini | |
| HERMETIC SEAL | NA Atm.cm ³ /s | |
| LEAKAGE (pressurized only) | NA | |
| MECHANICAL DURABILITY | 500 Cycles | OTHERS CHARACTERISTICS |
| WEIGHT | 26.6 gr | CABLE RETENTION 40 N Mini |
| SPECIFICATION | | CENTER CONTACT RETENTION |
| | | Axial force - mating end 27 N Mini |
| | | Axial force - opposite end 27 N Mini |
| | | Torque NA cm.N Mini |
| | | RECOMMENDED TORQUES |
| | | Mating NA cm.N |
| | | Panel nut NA cm.N |
| | | Clamp nut NA cm.N |

| CONNECTOR PARTS | MATERIALS | FINISH | (all values are given) in micrometers |
|-----------------|------------------|------------------------|---|
| BODY | BRASS | BBR 2 | |
| OUTER CONTACT | BRASS | BBR 2 | |
| CENTER CONTACT | BERYLLIUM COPPER | GOLD 0.5 OVER NICKEL 2 | |
| INSULATOR | PTFE | - | |
| GASKET | | - | |
| OTHERS PIECES | BRASS | BBR 2 | |

BONOMINI

| | | |
|-------------------------|------------------------------------|------------------|
| ISSUE 9726C01 | CREATION DATE 21/07/1993 | FILE PART-NUMBER |
|-------------------------|------------------------------------|------------------|



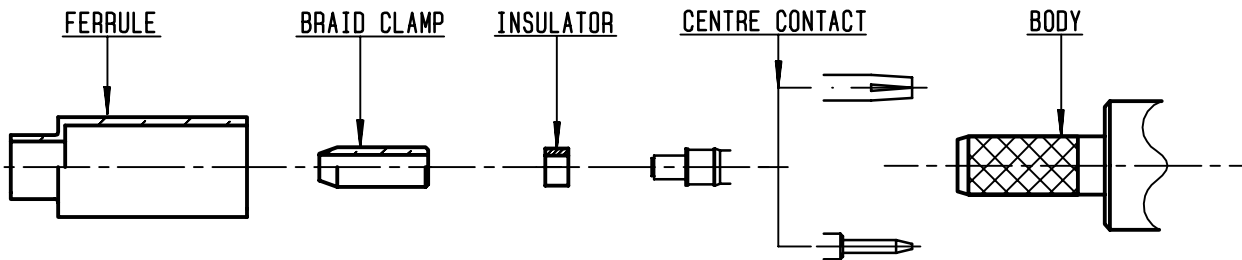
The information given here is subject to change without notice.
Design changes may be in order to improve the product .

Connect to the future



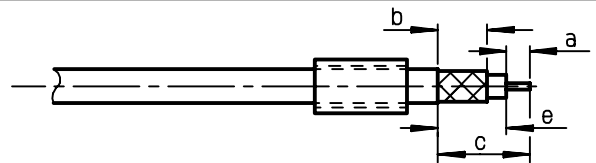
R161.236.000

ISSUE **9726C01** SERIES **N**



①

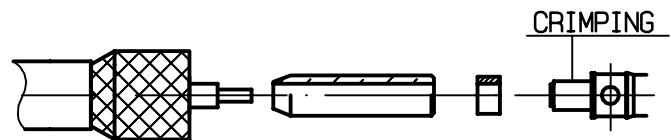
Slide onto the cable the ferrule
Strip the cable .
-
-



| Stripping | a | b | c | d | e |
|-----------|-------|-------|-------|---|-------|
| inch | 0.177 | 0.315 | 0.551 | 0 | 0.374 |
| mm | 4.5 | 8 | 14 | | 9.5 |

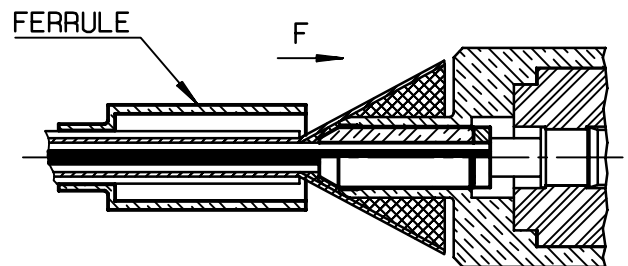
②

Fan the braid .
Slide the braid clamp and insulator between the dielectric and the braid .
Slide on centre contact until it bottoms against cable dielectric .
Crimp centre contact .
Crimping tool : R282 223 000 (Hex. : 0.068)
or crimping tool R282 293 000 (M22520/5-01)
+ dies R282 235 011 (M22520/5-11)



③

Slide cable dielectric into the body while gently grinding the braid over the knurl
Push until the dielectric clicks into position .
Slide ferrule over braid in direction F .



④

Crimp the ferrule with crimping tool R 282 223 000 (Hex. : 0.213) or crimping tool R282 293 000 (M22520/5-01)
+ dies R282 235 011 (M22520/5-11)
Cut the excess of braid .
-
-

