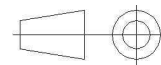
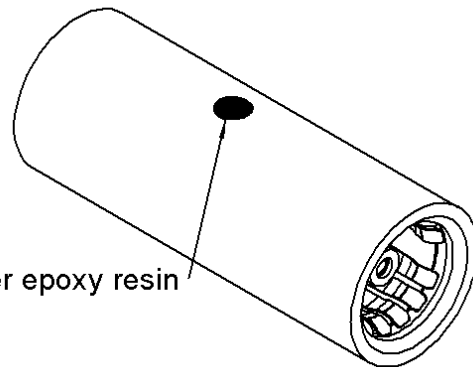
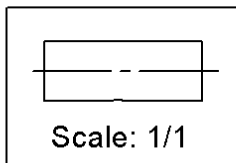
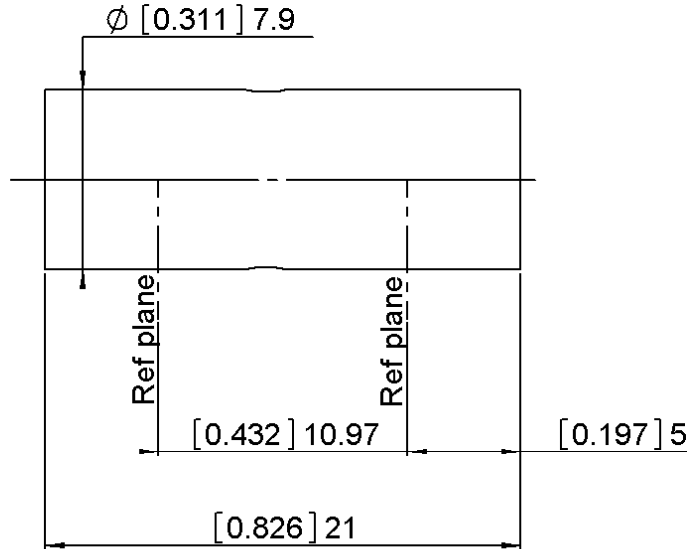


**FEMALE-FEMALE STRAIGHT ADAPTER**

**R128.705.711**

Série : BMA



All dimensions are in mm.

COMPONENTS	MATERIALS	PLATING ( $\mu\text{m}$ )
BODY	STAINLESS STEEL	PASSIVATION
CENTER CONTACT	BERYLLIUM COPPER	GOLD 1.3 OVER COPPER 2.5
OUTER CONTACT	BERYLLIUM COPPER	NPGR.
INSULATOR	PTFE	
GASKET		
OTHERS PARTS		
-	-	-
-	-	-

Issue : 1121 A

In the effort to improve our products, we reserve the rights to make changes judged to be necessary.



**FEMALE-FEMALE STRAIGHT ADAPTER**

**R128.705.711**

Série : **BMA**

**PACKAGING**

Standard	Unit	Other
<b>100</b>	<b>'W' option</b>	<b>Contact us</b>

**SPECIFICATION**

**ELECTRICAL CHARACTERISTICS**

Impedance	<b>50</b>	$\Omega$
Frequency	<b>0-22</b>	GHz
VSWR	<b>1.20*</b> + <b>0,0000</b>	x F(GHz) Maxi
Insertion loss	<b>.07</b>	$\sqrt{F}$ (GHz) dB Maxi
RF leakage	- ( <b>80</b> )	- F(GHz)) dB Maxi
Voltage rating	<b>500</b>	Veff Maxi
Dielectric withstanding voltage	<b>1500</b>	Veff mini
Insulation resistance	<b>5000</b>	M $\Omega$ mini

**ENVIRONMENTAL**

Operating	<b>-65/+165</b>	$^{\circ}$ C
Hermetic seal	<b>NA</b>	Atm.cm3/s
Panel leakage	<b>NA</b>	

**MECHANICAL CHARACTERISTICS**

Center contact retention		
Axial force – Mating end	<b>27</b>	N mini
Axial force – Opposite end	<b>27</b>	N mini
Torque	<b>NA</b>	N.cm mini
Recommended torque		
Mating	<b>0</b>	N.cm
	<b>0</b>	N.cm
	<b>0</b>	N.cm
Panel nut	<b>NA</b>	N.cm
Mating life	<b>1000</b>	Cycles mini
Weight	<b>5,1900</b>	g

**OTHER CHARACTERISTICS**

Assembly instruction

Others :  
\*1.05 at 5 GHz

Issue : **1121** A

In the effort to improve our products, we reserve the rights to make changes judged to be necessary.

