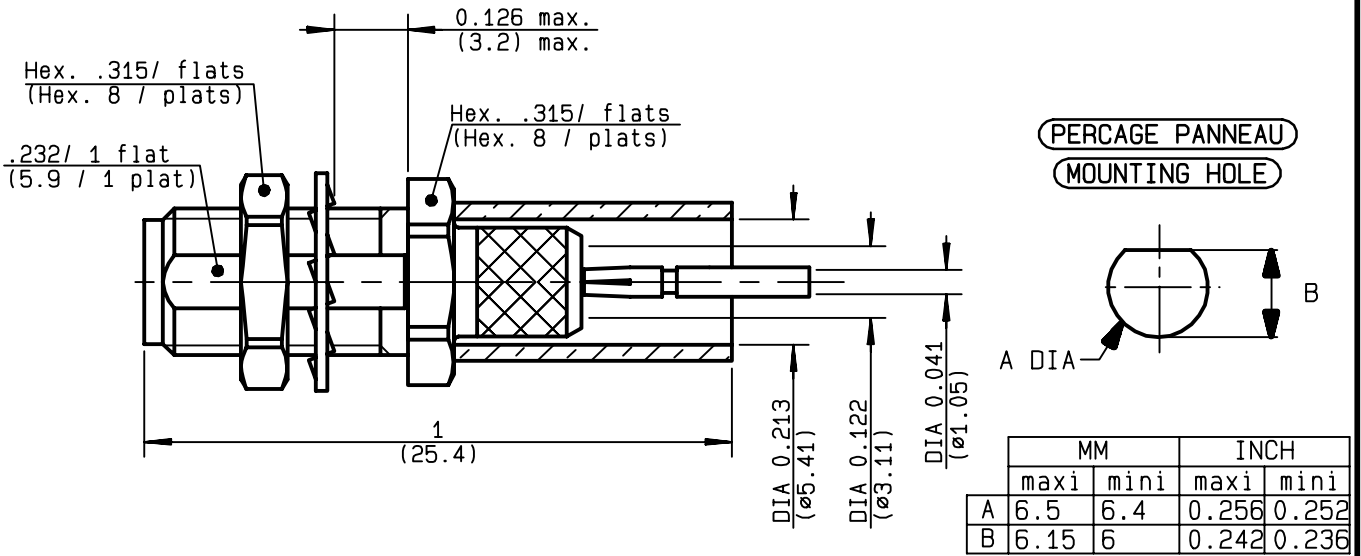


**STRAIGHT BULKHEAD JACK FULL CRIMP-TYPE  
CABLE 5/50 S**

**R124.314.120**  
**SERIES SMA-COM**



NOMINAL IMPEDANCE	<b>50</b> Ω
FREQUENCY RANGE	<b>0-12.4</b> GHz
TEMPERATURE RATING	<b>-65/+165</b> °C
V.S.W.R	<b>1.15</b> + <b>.01</b> x F(GHz)Maxi
RF INSERTION LOSS	<b>0.05</b> √F(GHz) dB Maxi
VOLTAGE RATING	<b>335</b> Veff Maxi
DIELECTRIC WITHSTANDING VOLTAGE	<b>1000</b> Veff Mini
INSULATION RESISTANCE	<b>5000</b> MΩMini
HERMETIC SEAL	<b>NA</b> Atm.cm <sup>3</sup> /s
LEAKAGE (pressurized only)	<b>NA</b>
MECHANICAL DURABILITY	<b>100</b> Cycles
WEIGHT	<b>4.1</b> gr
SPECIFICATION	

CABLES : **KX 15**  
**RG 141**  
**RG 58**

OTHERS CHARACTERISTICS

CABLE RETENTION	<b>180</b>	N Mini
CENTER CONTACT RETENTION		
Axial force - mating end	<b>18</b>	N Mini
Axial force - opposite end	<b>18</b>	N Mini
Torque	<b>NA</b>	cm.N Mini
RECOMMENDED TORQUES		
Mating	<b>NA</b>	cm.N
Panel nut	<b>150</b>	cm.N
Clamp nut	<b>NA</b>	cm.N

CONNECTOR PARTS	MATERIALS	FINISH	(all values are given in micrometers)
BODY	BRASS	BBR 2	
OUTER CONTACT			
CENTER CONTACT	BERYLLIUM COPPER	GOLD 1.3 OVER COPPER 2.5	
INSULATOR	PTFE	-	
GASKET		-	
OTHERS PIECES	BRASS	BBR 2	

TRIQUES

ISSUE	CREATION DATE	FILE PART-NUMBER
<b>9847A00</b>	<b>21/05/1996</b>	<b>96-1000-018</b>



**RADIALL®**

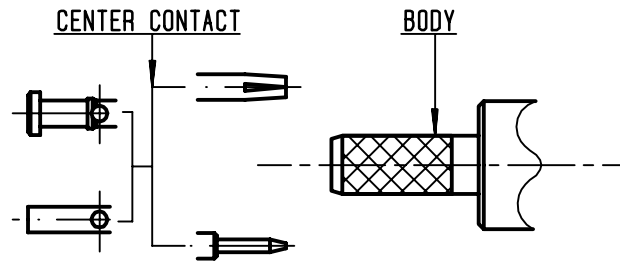
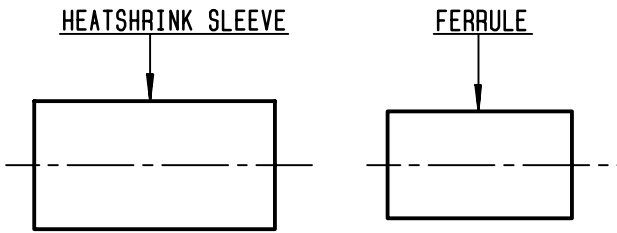
The information given here is subject to change without notice.  
Design changes may be in order to improve the product .

*Connect to the future*



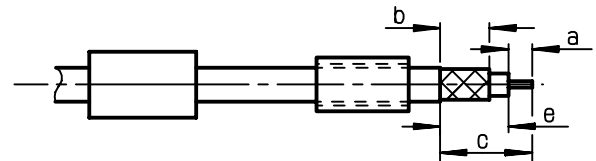
**R124.314.120**

ISSUE 9847A00 SERIES SMA-COM



①

Slide heatshrink sleeve (R280.637.030 - Option) and ferrule onto cable .  
Strip the cable .

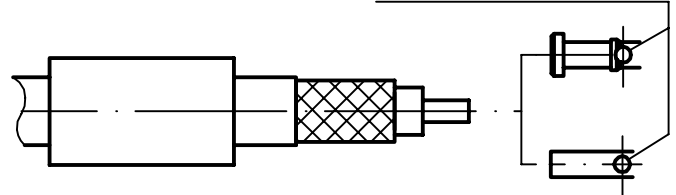


Stripping	a	b	c	d	e
inch	0.118	0.248	0.425	0	0.307
mm	3	6.3	10.8		7.8

②

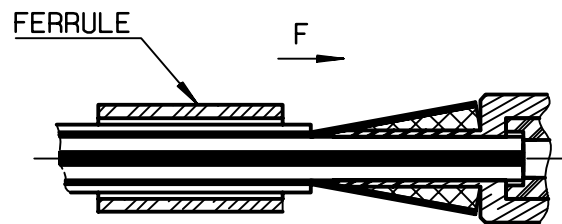
Slide center contact on until it bottoms against cable dielectric .  
Solder or crimp center contact .  
Crimping tool : R282.281.000 ( 2 x 4 pts ) position 7  
+ positionner R282.967.012 .

SOLDER / CRIMPING



③

Fan the braid .  
Slide cable into the body by overtaking the insulator hard mounting point .  
Slide ferrule over the braid .  
(In direction F)



④

Crimp the ferrule with crimping tool R282.223.000 ( Hex. : .213 )(5.41) or crimping tool R282.293.000 ( M22520/5-01 ) + dies R282.235.011 ( M22520/5-11 )  
Cut excess of braid if necessary .  
Slide sleeve over ferrule and heatshrink in place (Option)

Shrink the heatshrink sleeve

