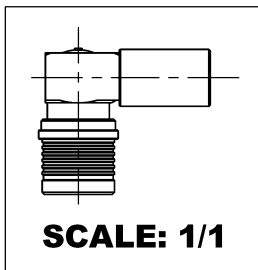
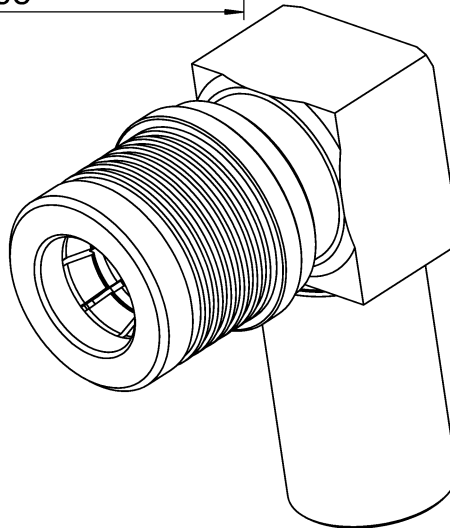
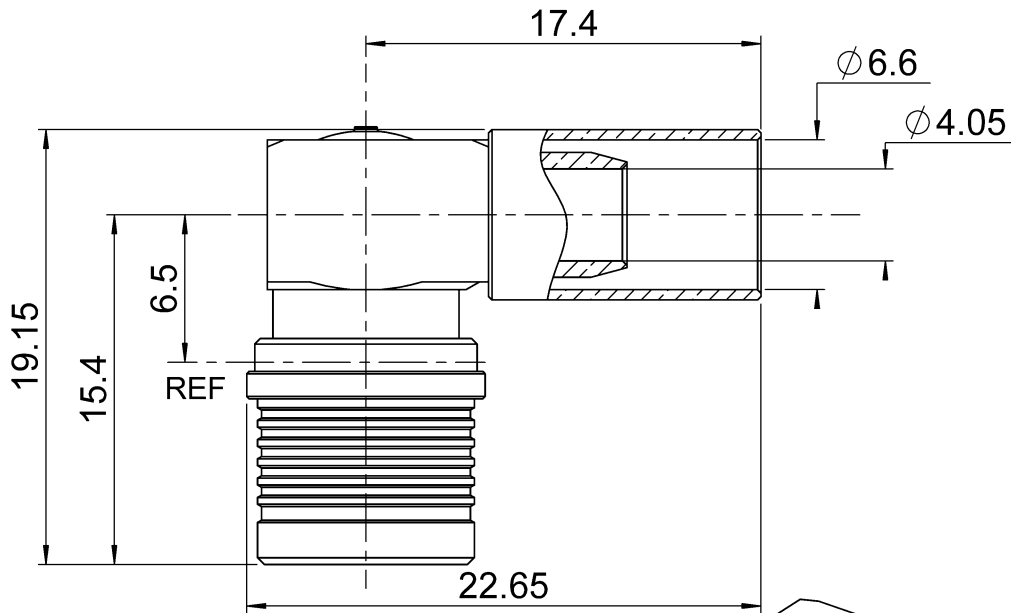
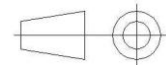


PAGE 1/3	ISSUE 15-05-15E	SERIES QMA	PART NUMBER R123177100
----------	-----------------	------------	------------------------



All dimensions are in mm.



COMPONENTS	MATERIALS	PLATING (μm)
Body	<b>BRASS</b>	<b>BBR</b>
Center contact	<b>BRASS</b>	<b>NPGR</b>
Outer contact	<b>BRONZE</b>	<b>BBR</b>
Insulator	<b>PTFE</b>	
Gasket	-	
Others parts	<b>BRASS</b>	<b>BBR</b>
-	-	-
-	-	-

PAGE <b>2/3</b>	ISSUE <b>15-05-15E</b>	SERIES <b>QMA</b>	PART NUMBER <b>R123177100</b>
-----------------	------------------------	-------------------	-------------------------------

### PACKAGING

Standard	Unit	Other
<b>100</b>	<b>Contact us</b>	<b>Contact us</b>

### ELECTRICAL CHARACTERISTICS

Impedance	<b>50</b>	Ω
Frequency	<b>0-6</b>	GHz
VSWR	<b>*1.50 + 0.0000</b>	x F(GHz) Maxi
Insertion loss	<b>0.2</b>	√F(GHz) dB Maxi
RF leakage	- ( <b>NA</b> )	- F(GHz)) dB Maxi
Voltage rating	<b>335</b>	Veff Maxi
Dielectric withstanding voltage	<b>1000</b>	Veff mini
Insulation resistance	<b>5000</b>	MΩ mini

### MECHANICAL CHARACTERISTICS

Center contact retention		
Axial force – Mating End	<b>18</b>	N mini
Axial force – Opposite end	<b>27</b>	N mini
Torque	<b>NA</b>	N.cm mini
Recommended torque		
Mating	<b>NA</b>	N.cm
Panel nut	<b>NA</b>	N.cm
Clamp nut	<b>NA</b>	N.cm
A/F clamp nut	<b>0.0000</b>	mm
Mating life	<b>100</b>	Cycles mini
Weight	<b>8.8500</b>	g

### ENVIRONMENTAL

Operating temperature	<b>-40/+105</b>	°C
Hermetic seal	<b>NA</b>	Atm.cm3/s
Panel leakage	<b>NA</b>	

### SPECIFICATION

### CABLE ASSEMBLY

Stripping	a	b	c	d	e	f
mm	<b>3</b>	<b>6.6</b>	<b>13.2</b>	<b>0</b>	<b>10.2</b>	<b>0</b>

Assembly instruction: **Crimp 05**

Recommended cable(s)

**LMR 240**

Characteristics indicated on this data sheet are those that can be achieved with the highest performance cable. Intrinsic limitations of the cable may diminish the performance of the assembly

Cable retention

- pull off	<b>220</b>	N mini
- torque	<b>NA</b>	N.cm

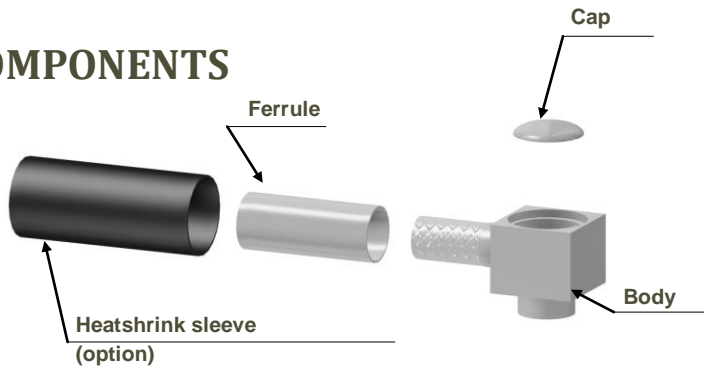
### TOOLING

Part Number	Description	Hexagon
R282223000	CRIMPING TOOL	6.48
R282293000	CRIMPING TOOL M22520/5-01	
R282235013	CRIMPING DIES	6.48

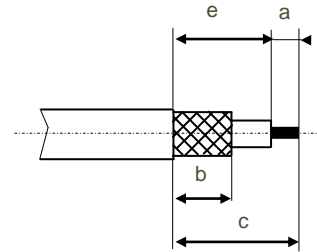
### OTHER CHARACTERISTICS

PAGE 3/3	ISSUE 15-05-15E	SERIES QMA	PART NUMBER R123177100
----------	-----------------	------------	------------------------

## COMPONENTS

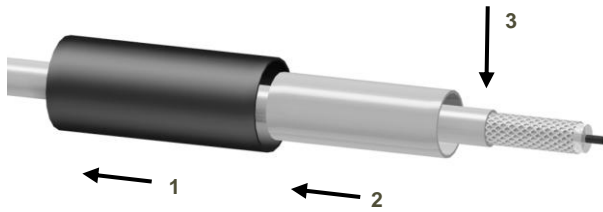


## STRIPPING DIMENSIONS



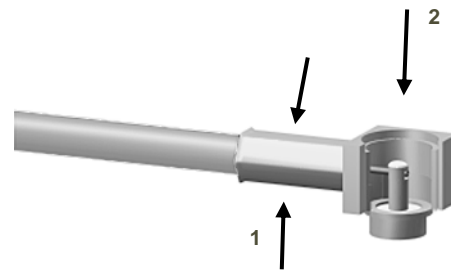
**1**

Slide the heatshrink sleeve onto the cable (Option).  
Slide the ferrule onto the cable.  
Strip the cable.



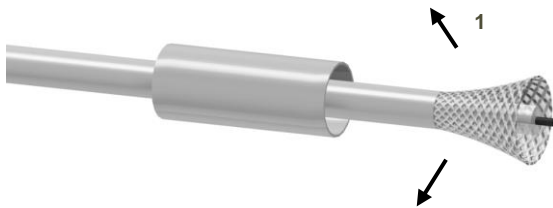
**4**

Crimp the ferrule with crimping tool ( see connector TDS ).  
Solder the inner conductor.



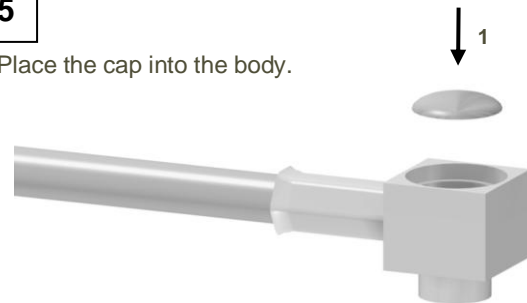
**2**

Fan the braid.



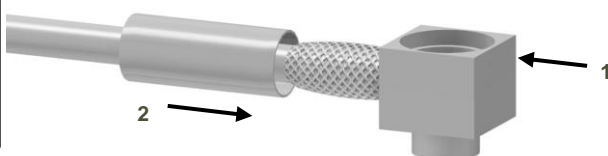
**5**

Place the cap into the body.



**3**

Push the connector body under the braid.  
Slide the ferrule over the braid.



**6**

Press on the cap flush or slightly below the surface of the body assembly.  
Slide the sleeve over the ferrule and heat shrink it in place (Option).

