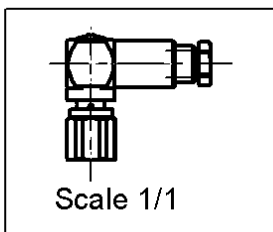
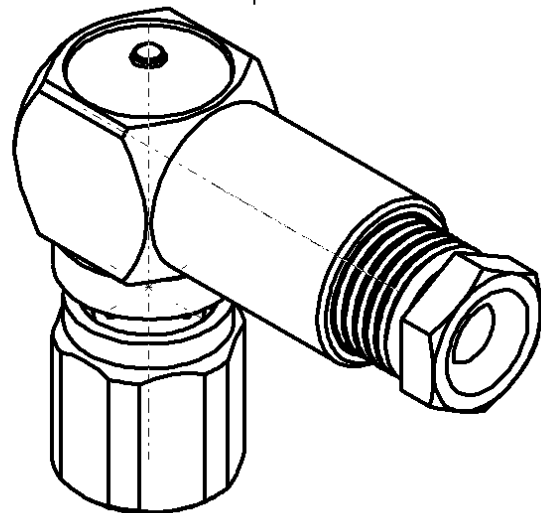
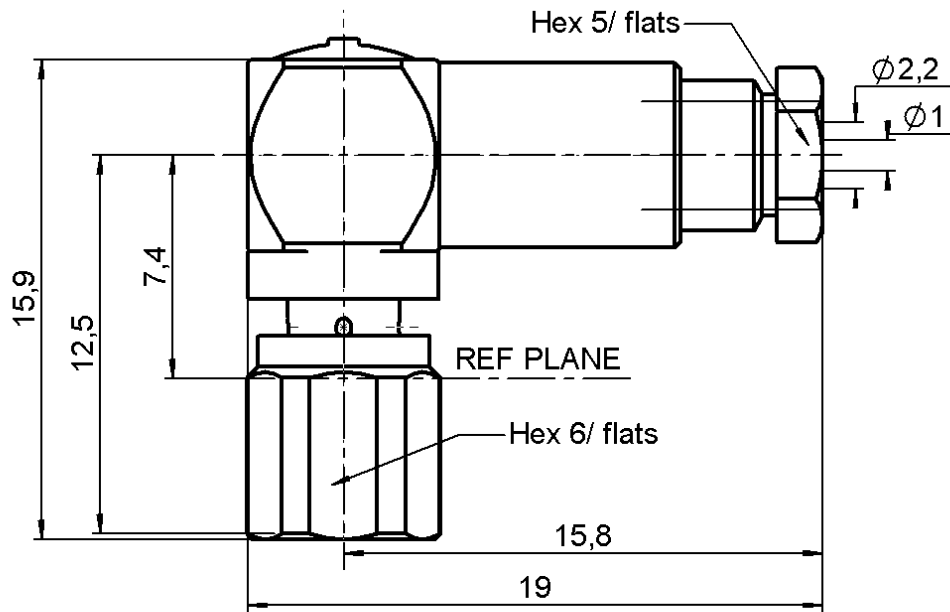


**RIGHT ANGLE PLUG CLAMP TYPE**

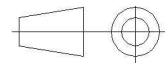
**R112.163.000**

**CABLE 2/50 S**

Series : SMC



All dimensions are in mm.



COMPONENTS	MATERIALS	PLATINGS ( $\mu\text{m}$ )
BODY	BRASS	GOLD 0.2 OVER NICKEL 2
CENTER CONTACT	BERYLLIUM COPPER	GOLD 1.3 OVER NICKEL 2
OUTER CONTACT	-	-
INSULATOR	PTFE	-
GASKET	CHLOROPRENE	-
OTHERS PARTS	BRASS	GOLD 0.2 OVER NICKEL 2
-	-	-
-	-	-

Issue : 0430 L

In the effort to improve our products, we reserve the right to make changes judged to be necessary.



**RIGHT ANGLE PLUG CLAMP TYPE**

**R112.163.000**

**CABLE 2/50 S**

Series : SMC

**PACKAGING**

Standard	Unit	Other
<b>1</b>	-	<b>Contact us</b>

**SPECIFICATION**

**CABLE ASSEMBLY**

**ELECTRICAL CHARACTERISTICS**

Stripping	a	b	c	d	e	f
mm	1.50	2.00	4.00	5.00	0.00	0.00

Impedance		<b>50</b>	$\Omega$
Frequency		<b>0-10</b>	GHz
VSWR	<b>1.4</b> +	<b>0.060</b>	x F(GHz) Maxi
Insertion loss		<b>0.25</b>	$\sqrt{F}$ (GHz) dB Maxi
RF leakage	- (	<b>62</b>	- F(GHz)) dB mini
Voltage rating		<b>250</b>	Veff Maxi
Dielectric withstanding voltage		<b>750</b>	Veff mini
Insulation resistance		<b>1000</b>	M $\Omega$ mini

Assembly instruction :

Recommended cable(s)  
 RG 178  
 KX 21  
 RG 196  
 RG 178 LC

**MECHANICAL CHARACTERISTICS**

Cable retention  
 - pull off **58** N mini  
 - torque **NA** N.cm

Center contact retention			
Axial force – Mating end		<b>10</b>	N mini
Axial force – Opposite end		<b>10</b>	N mini
Torque		<b>NA</b>	N.cm mini

**TOOLING**

Part Number	Description	Hexagon
.	.	.

Recommended torque			
Mating		<b>30</b>	N.cm
Panel nut		<b>NA</b>	N.cm
Clamp nut		<b>40</b>	N.cm
A/F clamp nut		<b>5.000</b>	mm

**OTHERS CHARACTERISTICS**

Mating life		<b>500</b>	Cycles mini
Weight		<b>4.600</b>	g

**ENVIRONMENTAL**

Operating temperature		<b>-55°/+100</b>	° C
Hermetic seal		<b>NA</b>	Atm.cm3/s
Panel leakage		<b>NA</b>	

Issue : 0430 L

In the effort to improve our products, we reserve the right to make changes judged to be necessary.



**RADIALL**®

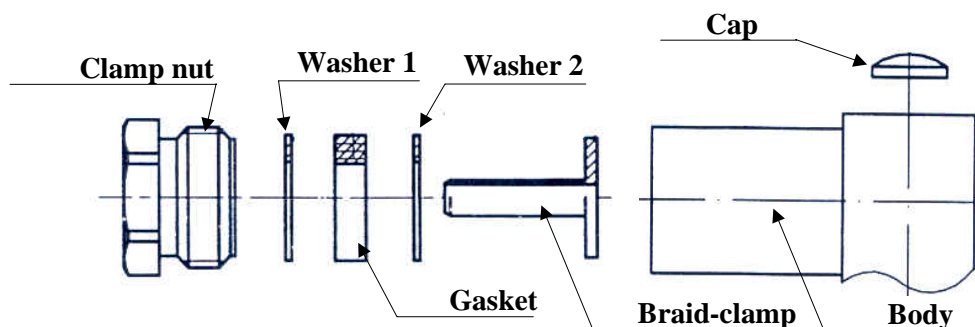
**RIGHT ANGLE PLUG CLAMP TYPE**

**R112.163.000**

**CABLE 2/50 S**

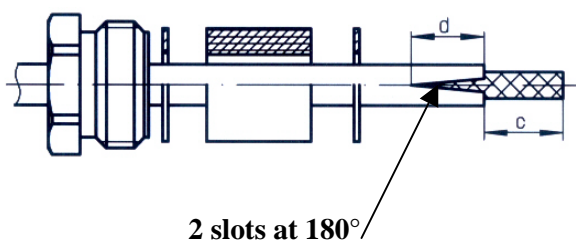
Series : SMC

**COMPONENTS**



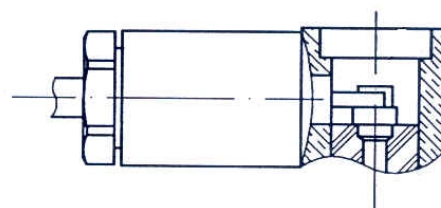
**1**

Slide the back nut, the first washer, the flat gasket, the second washer onto the cable.  
Strip the cable.  
Cut 2 slots in the jacket if necessary.



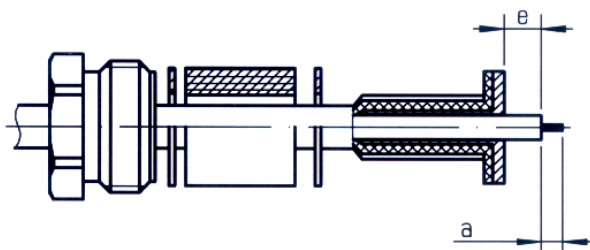
**3**

Screw sub-assembly into the connector body with the adapted wrench.  
Recommended coupling torque (see connector TDS).  
Solder the inner conductor.



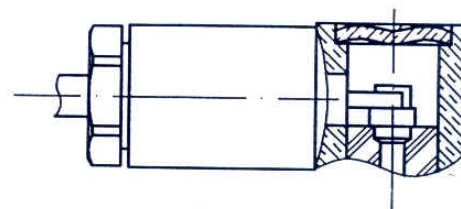
**2**

Slide the clamp braid sleeve.  
Cut the braid flush with the clamp braid sleeve.  
Strip off the diélectric.



**4**

Place the cap into the body.  
Press on the cap flush or slightly below the surface of the body assembly.



**Issue : 0430 L**

In the effort to improve our products, we reserve the right to make changes judged to be necessary.

