



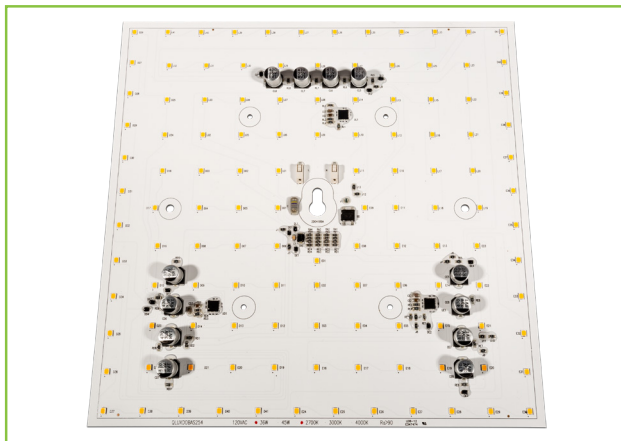
**L.T.F.**

## QLUX DOB AC Line Voltage LED Series



**QLUXDOBAS25436W122LED9  
36W 254mm Square LED Board**

### QLUX DOB



<b>Wattage</b>	36W
<b>Power Factor</b>	0.99
<b>CRI, R9</b>	96.2, 81
<b>CCT Options</b>	2700K, 3000K
<b>Luminous Flux</b>	≈ 3681.66 lm
<b>Efficacy</b>	≈ 100.6 lm/W
<b>Number of LEDs</b>	122
<b>Beam Angle</b>	160°
<b>Dimensions</b>	254mm x 254mm
<b>Dimming</b>	ELV & Triac Optional 0-10V



NOTE: Measurements based on 3000K CCT model.

### FEATURES

- Driver On Board technology - No external LED driver required.
- CCT options 2700K, 3000K.
- Superior color rendering ≈ 96.2 CRI .
- High efficacy lumen output up to ≈ 100.6 lm/W.
- LM-80 compliant LEDs.
- Tight binning 3 step Mac Adam Ellipses.
- Uniform & crisp light source intensity.
- Hot spot free design.
- California Title 24 Compliant.
- Extra thin low profile.
- Low heat generation, easy thermal management.
- Easy to fit in new design or retrofit applications.
- 277V AC option available.
- L70 > 60,000 Hours



### APPLICATIONS

- Residential and Commercial
- New or Retrofit OEM Fixtures

### ELECTRICAL SPECIFICATIONS

Model #	Input	Wattage	CCT Options	Luminous Flux
QLUXDOBAS25436W122LED927	120V AC 0.31A 50/60Hz	36W	2700K	≈ 3600 lm
QLUXDOBAS25436W122LED930			3000K	≈ 3682 lm



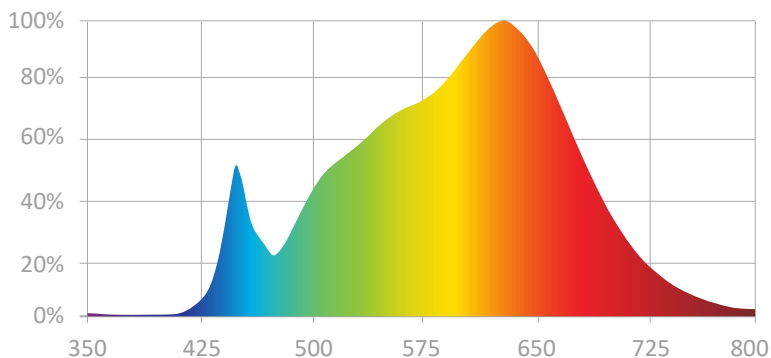
**L.T.F.**

## QLUX DOB AC Line Voltage LED Series



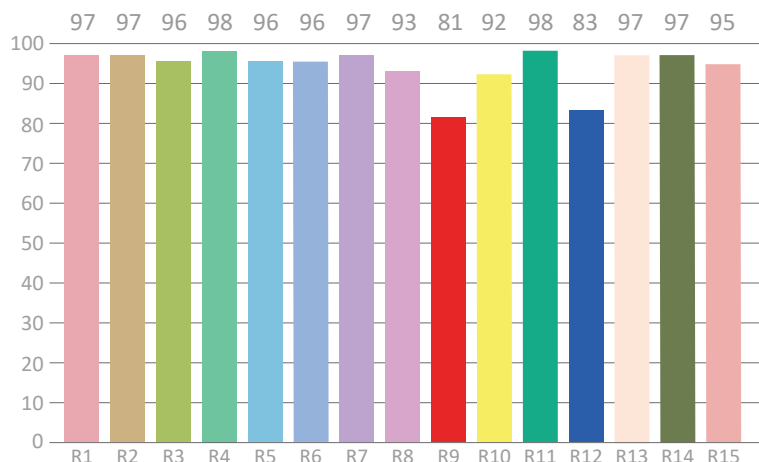
**QLUXDOBAS25436W122LED9**  
**36W 254mm Square LED Board**

### SPECTRORADIOMETRIC CHARACTERISTICS - 3000K



**Luminous Flux:** 3681.66 lm  
**Radiant Flux:** 13.02 W  
**Efficacy:** 100.6 lm/W  
**Nominal CCT:** IEC\_F3000  
 $x_0=0.4400$   $y_0=0.4030$   
**Chromaticity Coordinates:**  
 $x=0.4267$   $y=0.4028$   $u'=0.2445$   $v'=0.5193$   
**Chromaticity Difference:** +0.00102 Duv  
**CCT:** 3170 K

### CRI TEST RESULTS - 3000K



**Color Rendering Index (CRI):** 96.2  
**Dominant Wavelength:** 580.0 nm(E)  
**Peak Wavelength:** 630nm  
**Colour Fidelity Index:** Rf=93  
**Gamut Index:** Rg=100  
**Color Purity:** 0.4918  
**Color Ratio:** Kr=41.8% Kg=49.3% Kb=8.9%  
**Color Tolerance (SDCM):** 8.2  
**Bandwidth:** 179.9nm  
**Photosynthetically Active Radiation (PAR):** 12.2W  
**Photosynthetic Photon Flux (PPF):** 60.01  $\mu\text{mol/s}$

R1=97	R2=97	R3=96	R4=98	R5=96	R6=96	R7=97	R8=93
R9=81	R10=92	R11=98	R12=83	R13=97	R14=97	R15=95	Re=94



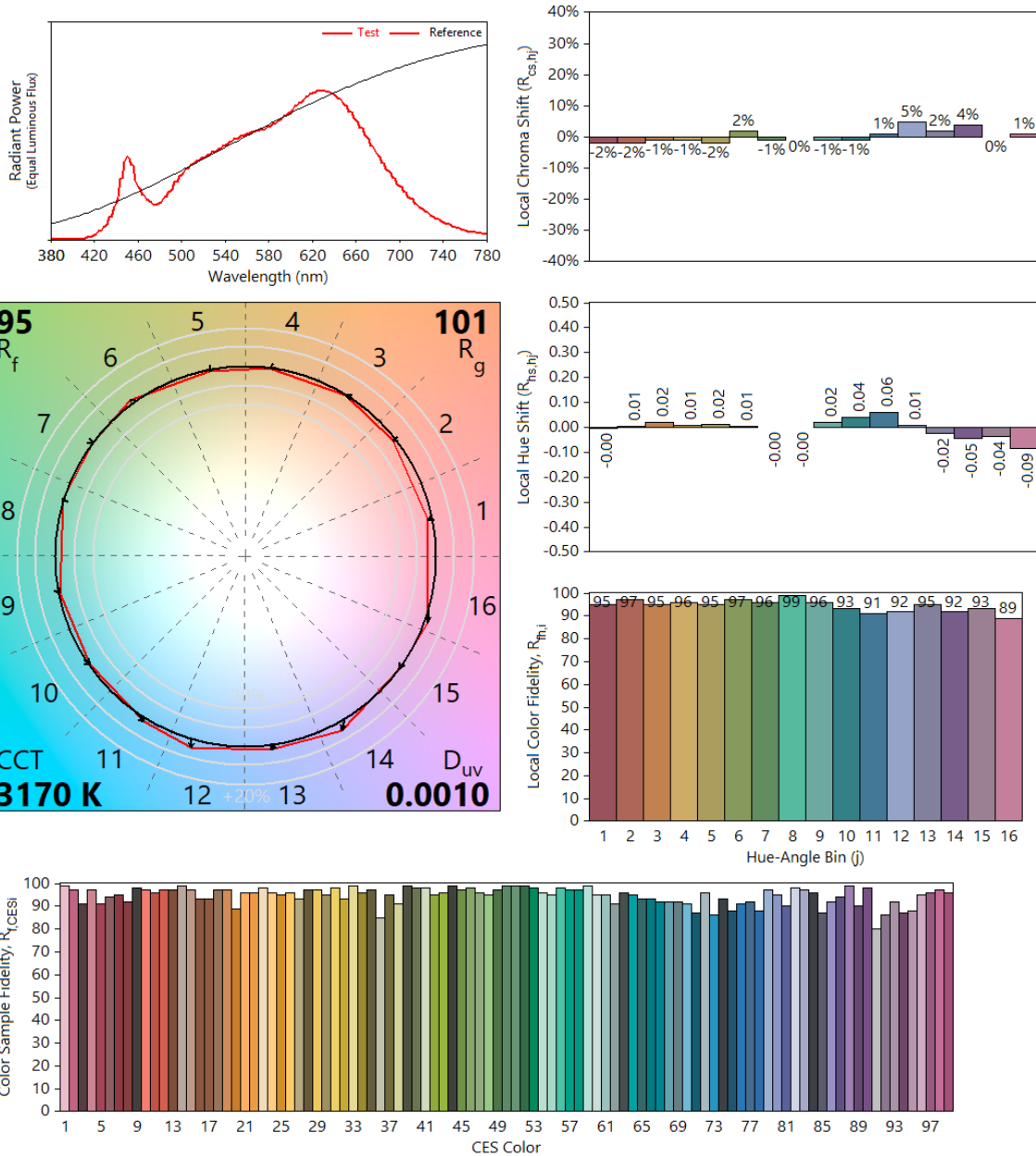
**L.T.F.**

**QLUX DOB AC Line Voltage LED Series**



**QLUXDOBAS25436W122LED9  
36W 254mm Square LED Board**

**IES TM-30-18 Test Results - 3000K**



**Notes:**

x 0.4267  
y 0.4028  
u' 0.2445  
v' 0.5194

**CIE 13.3-1995  
(CRI)  
 $R_a$  96  
 $R_g$  81**

Colors are for visual orientation purposes only.



**L.T.F.**

## QLUX DOB AC Line Voltage LED Series



**QLUXDOBAS25436W122LED9  
36W 254mm Square LED Board**

### ABSOLUTE MAXIMUM RATINGS (Ta=25°C)

Parameter	Symbol	Value	Unit
Voltage	V in	132	Vac
Operating Temperature	---	-35~+50	°C
LED Solder Temperature	Ts	110	°C
Storage Temperature	Tstg	-40~+100	°C
ESD Sensitivity (HBM)	---	±4000	V
Surge	---	2500	Vac

### MECHANICAL SPECIFICATIONS

LED Board Dimensions
254mm x 254mm