

Waterproof series connector



Waterproof 1510 series

Waterproof 1510 series connector product are available to meet Industry 4.0 automation control equipment. Can be used at Signal Transmission, Power, Sensor and Cable Connection.

IP67 Waterproof.

Specification

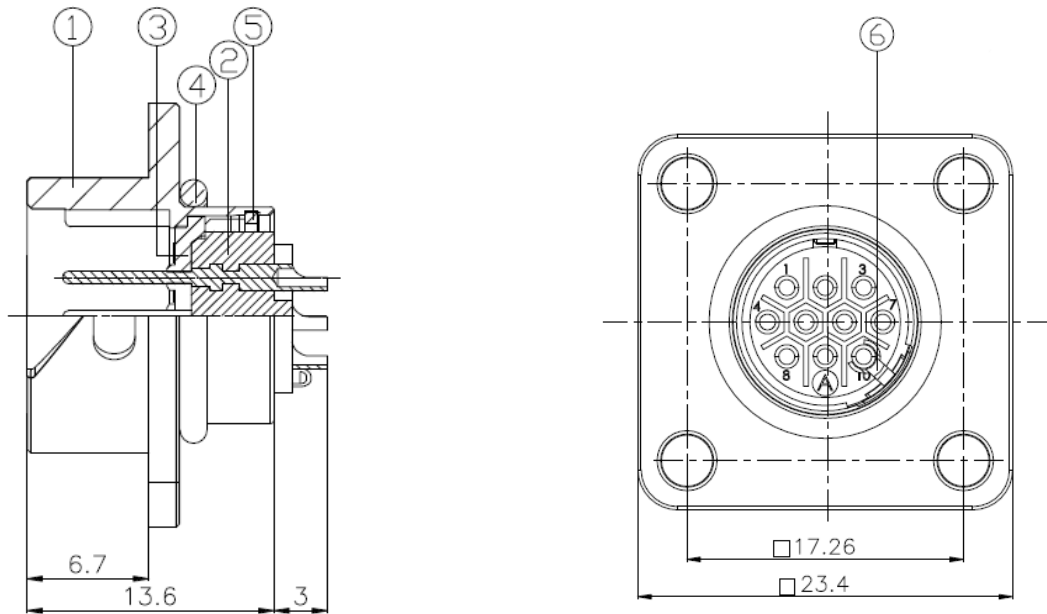
JPC Product Name	PZAACWPMC15101/ PZAACWPMB15101
Product Series	Waterproof 1510 series connector
Connector Type	Plug Male/Female
Shell Size	1510
No. Of Contact	10 Pin
Operation limit voltage	200
Withstanding Voltage	900
Insulation Resistance	1000

Application

Servo Motors	Automobiles
Power	Electric Vehicles
Electronics & Electrical	Communication Equipment
Mechanical	Military Applications
Medical Equipment	Industrial Application

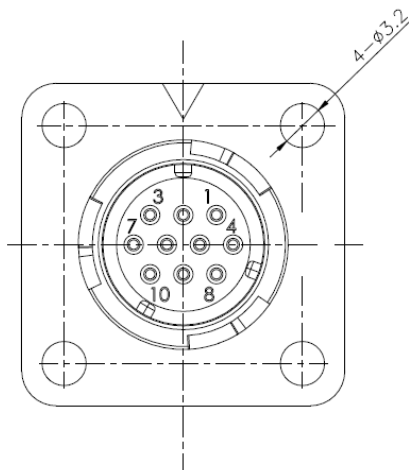
Waterproof 1510 series

Receptacle Interface Dimensions



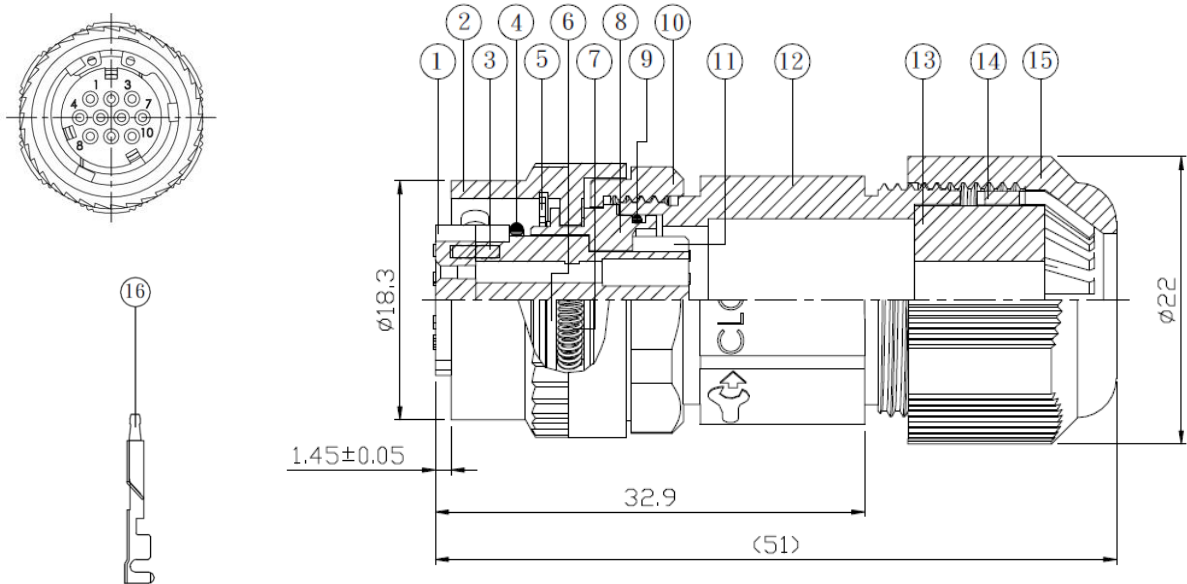
Product Material

1.BODY	3.05M
2. INSULATOR	PBT+15%GF C3604
3.WASHER	RUBBER
4.O RING	RUBBER NBR
5.EATH BLATE	COPPER ALLOY
6.BUCKLE	Phosphor Bronze



Waterproof 1510 series

Plug Interface Dimensions



Product Material

1.INSULATOR	PLASTIC
2.CAP	SDC12
3.BOSS	C3604BD
4.O-RING	RUBBER
5.C-RING	Stainless Steel
6.WASHER	PLASTIC
7.SPRING	SUP3
8.BODY	SDC2
9.O-RING	RUBBER
10.NUT	COPPER ALLOW
11.INSULATOR	DOPONT NEPORENE
12.BODY	SDC2
13.PIPE	RUBBER
14.CLAMP	PLASTIC
15.NUT	PLASTIC
16.CONTACT	COPPER ALLOW