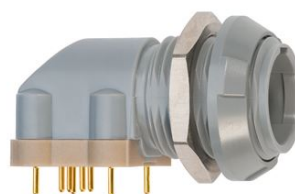


## SUMMARY

### # Wires

Low voltage	8
-------------	---



*Image is for illustrative purpose only*

Series	1P
Termination type	Female print PCB
IP rating	50
AWG wire size	26.00 - 22.00
Cable Ø	0.00 - 0.00 mm
Status	Active

### Download

[Request a quote](#)  
[PCB Eagle Pattern](#)  
[PCB Altium Pattern](#)  
[PCB KiCad Pattern](#)  
[Catalog](#)

## TECHNICAL DETAILS

### Mechanics

Shell Style/Model	PX*: Elbow receptacle key (G) or keys (A,B,C) with two nuts for printed circuit
Keying	2 keys (alpha=40; Plug: male contacts; Receptacle: female contacts)
Housing Material	PSU (Polysulfone), gray
Variant	G : Gray front nut
Weight	12.47 g

### Performance

Configuration	1P.M08 : 8 Low Voltage
Insulator	G: PSU gray
Rated Current	5 Amps

### Specifications

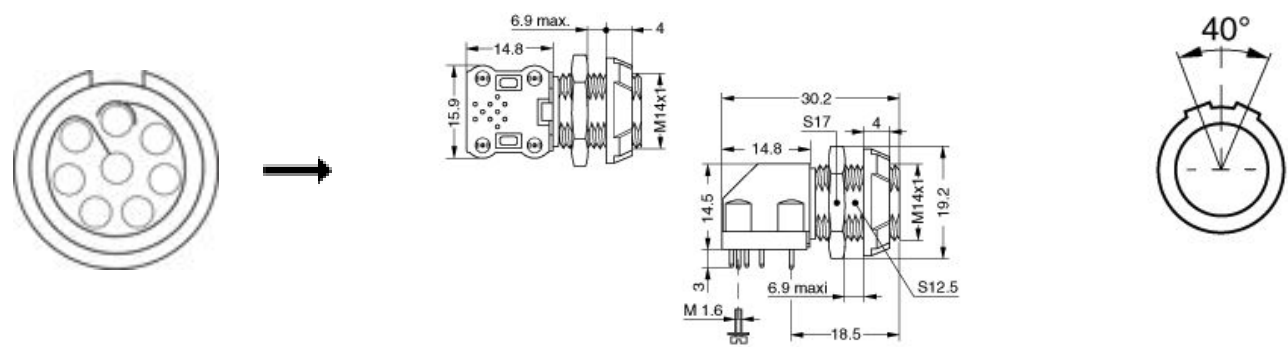
Contact Type: Print (straight)  
Contact Dia.: 0.7 mm (0.0275in)  
R (max): 6.5 mOhm  
Test voltage (kV rms) Contact-contact: 1.05  
Air clearance min.: 0.6 mm  
Creepage distance min.: 0.6 mm

*LEMO products and services are provided "as is". LEMO makes no warranties or representations with regard to LEMO product & services or use of them, express, implied or statutory, including for accuracy, completeness, or security. The user is fully responsible for his products and applications using LEMO components.*

Others

- Endurance (Shell): >2000 mating cycles
- Temp (min / max): -50°C / +150°C
- F ret (min): 50 N
- F ret (max): 150 N
- Steam sterilization: > 100 times (with potting on rear connection)

DRAWINGS



Dimensions

	A	E	L	S1	S2	e
mm.	19.2	6.9 max	30.2	S12.5	S17	M14x1
in.	0,76	0,27	1,19			

RECOMMENDED BY LEMO

Tools

LEMO products and services are provided “as is”. LEMO makes no warranties or representations with regard to LEMO product & services or use of them, express, implied or statutory, including for accuracy, completeness, or security. The user is fully responsible for his products and applications using LEMO components.