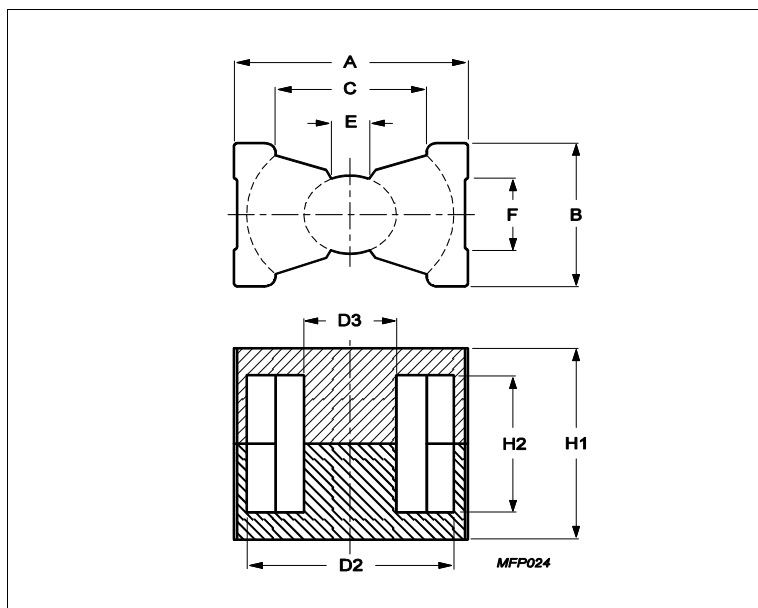


Core **PQ26/20**



| Effective parameters | | | |
|----------------------|------------------|-------|------------------|
| | Parameter | Value | Unit |
| $\Sigma(I/A)$ | core factor (C1) | 0.372 | mm ⁻¹ |
| Ve | effective volume | 5470 | mm ³ |
| Le | effective length | 45 | mm |
| Ae | effective area | 121 | mm ² |
| Amin | minimum area | 109 | mm ² |
| m | PQ26/20 | ≈ 30 | g/set |

Dimensions for product: PQ26/20

| | Nom | Tol + | Tol - | Max | Min | Unit |
|-----------|-------|-------|-------|-------|-------|------|
| A | 27.30 | 0.46 | 0.46 | 27.76 | 26.84 | mm |
| B | 19.00 | 0.45 | 0.45 | 19.45 | 18.55 | mm |
| C | | | | | 15.50 | mm |
| D2 | 22.50 | 0.46 | 0.46 | 22.96 | 22.04 | mm |
| D3 | 12.00 | 0.20 | 0.20 | 12.20 | 11.80 | mm |
| E | | | | | 6.00 | mm |
| F | | | | | 10.50 | mm |
| H1 | 20.20 | 0.25 | 0.25 | 20.45 | 19.95 | mm |
| H2 | 11.50 | 0.30 | 0.30 | 11.80 | 11.20 | mm |

Inductance factor

| Material | Value | Tol + | Tol - | Unit |
|----------|-------|-------|-------|-----------------------|
| 3C94 | 6200 | 25% | 25% | nH/turns ² |
| 3C95 | 7020 | 25% | 25% | nH/turns ² |
| 3C96 | 5530 | 25% | 25% | nH/turns ² |
| 3C97 | 7020 | 25% | 25% | nH/turns ² |
| 3F36 | 3700 | 25% | 25% | nH/turns ² |
| 3F46 | 2300 | 25% | 25% | nH/turns ² |

Power loss: 3C94

| Measuring conditions | | | Max | Unit |
|----------------------|--------|--------|-------|-------|
| 100 kHz | 200 mT | 100 °C | 2.700 | W/set |

Power loss: 3C95

| Measuring conditions | | | Max | Unit |
|----------------------|--|--|-----|------|
| | | | | |

Core **PQ26/20**

| Power loss: 3C95 | | | | |
|----------------------|--------|--------|-------|-------|
| Measuring conditions | | | Max | Unit |
| 100 kHz | 200 mT | 100 °C | 2.600 | W/set |
| 100 kHz | 200 mT | 25 °C | 2.800 | W/set |
| Power loss: 3C96 | | | | |
| Measuring conditions | | | Max | Unit |
| 100 kHz | 200 mT | 100 °C | 2.500 | W/set |
| 400 kHz | 50 mT | 100 °C | 0.980 | W/set |
| Power loss: 3C97 | | | | |
| Measuring conditions | | | Max | Unit |
| 100 kHz | 200 mT | 60 °C | 2.700 | W/set |
| 100 kHz | 200 mT | 120 °C | 2.600 | W/set |
| 100 kHz | 200 mT | 140 °C | 3.300 | W/set |
| Power loss: 3F36 | | | | |
| Measuring conditions | | | Max | Unit |
| 500 kHz | 50 mT | 100 °C | 0.820 | W/set |
| 500 kHz | 100 mT | 100 °C | 6.300 | W/set |
| Power loss: 3F46 | | | | |
| Measuring conditions | | | Max | Unit |
| 1000 kHz | 50 mT | 100 °C | 3.000 | W/set |
| 3000 kHz | 10 mT | 100 °C | 1.900 | W/set |

| Bsat | | | | | |
|----------------------|---------|--------|----------|-----|------|
| Measuring conditions | | | Material | Min | Unit |
| 25 kHz | 250 A/m | 100 °C | 3C94 | 320 | mT |
| 25 kHz | 250 A/m | 100 °C | 3C95 | 330 | mT |
| 25 kHz | 250 A/m | 100 °C | 3C96 | 340 | mT |
| 25 kHz | 250 A/m | 100 °C | 3C97 | 330 | mT |
| 25 kHz | 250 A/m | 100 °C | 3F36 | 340 | mT |
| 25 kHz | 250 A/m | 100 °C | 3F46 | 330 | mT |

| Accessories | | |
|-----------------------|-------------------------------------|--------------------|
| Ordering name | Description | Ordering code |
| CLM/P-PQ26/20 | Clamp, with ground pin | F0MPQ02620CLMP000P |
| CPV-PQ26/20-1S-12PD-Z | Coil former, termoplastic, vertical | F0PPQ02620CV01112P |
| CPV-PQ26/20-1S-12P-Z | Coil former, termoplastic, vertical | F0PPQ02620CV00112P |