

SCHMATIC DIAGRAM

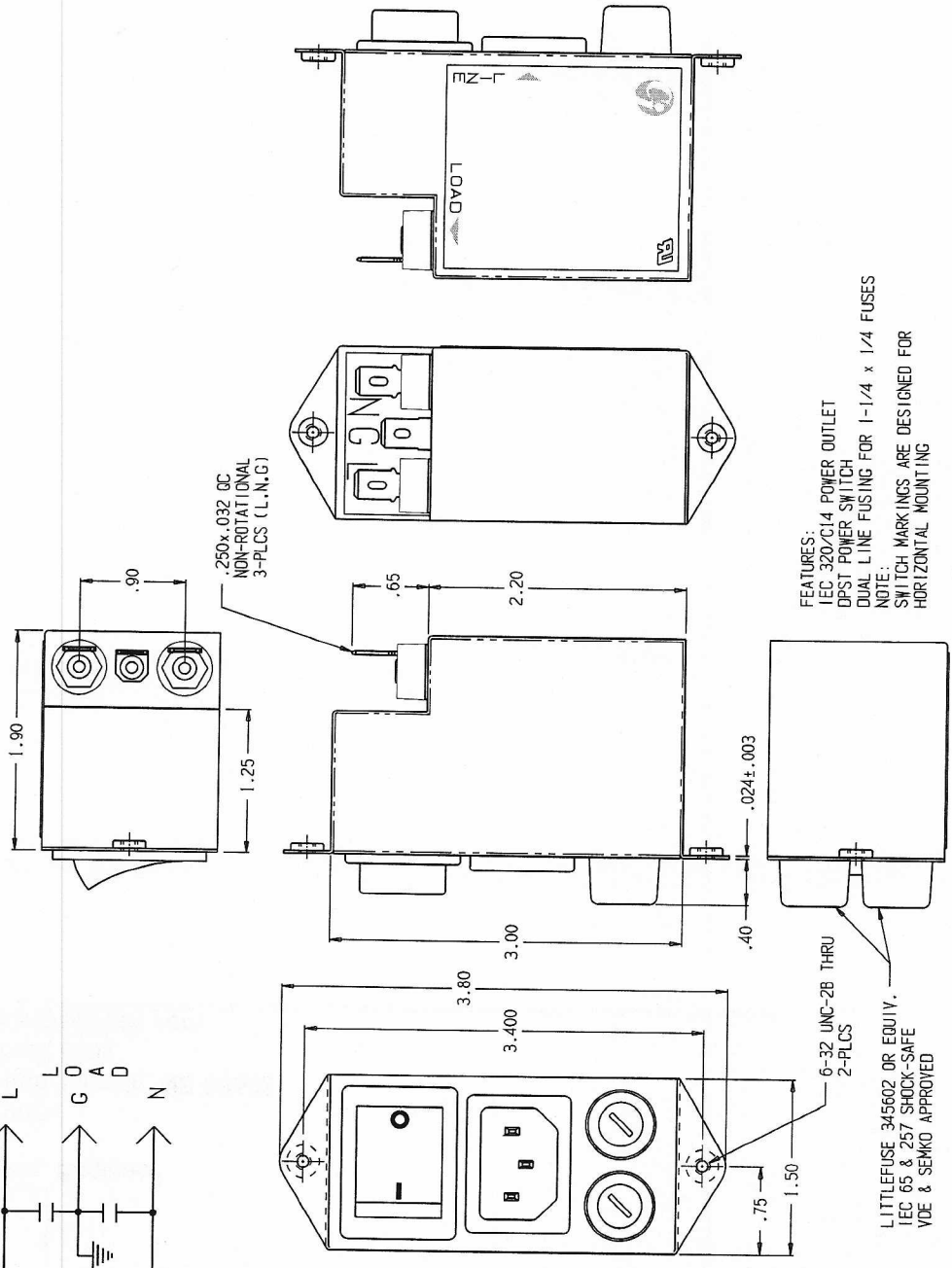
MINIMUM INSERTION LOSS		50 Ω CIRCUIT	
COMMON MODE		DIFFERENTIAL MODE	
min. I.L. (dB)	min. I.L. (dB)	min. I.L. (dB)	min. I.L. (dB)
.05	-.05	1.15	20
.15	12	0.5	30
1.0	20	1.0	35
5.0	25	5.0	40
10	35	10	45
20	40	20	---
30	45	30	40

TEST SPECIFICATIONS

HI-POT (1 min.) L/G 1500 VAC  
L/L 1768 VDC

RATED VOLTAGE: 250 VAC MAXIMUM  
RATED CURRENT: at 115 VAC 15 A MAXIMUM  
at 250 VAC 10 A MAXIMUM  
LINE FREQUENCY 50/60 Hz  
CURRENT OVERLOAD 6X FOR 8 SECONDS  
INSULATION RESISTANCE 9000 MEGOHMS MINIMUM  
LEAKAGE CURRENT at 120 VAC, 60Hz .25 mA MAXIMUM  
at 250 VAC, 50Hz .40 mA MAXIMUM

ENVIRONMENTAL SPECIFICATIONS  
AMBIENT TEMPERATURE RANGE 0 deg.C to 40 deg.C  
( OPERATING AT RATED CURRENT )  
HUMIDITY RANGE 0 % to 95 % R.H.



FEATURES:  
IEC 320/C14 POWER OUTLET  
DPST POWER SWITCH  
DUAL LINE FUSING FOR 1-1/4 x 1/4 FUSES  
NOTE:  
SWITCH MARKINGS ARE DESIGNED FOR  
HORIZONTAL MOUNTING

LITTLEFUSE 345602 OR EQUIV.  
IEC 65 & 257 SHOCK-SAFE  
VDE & SEMKO APPROVED

CONFIDENTIAL-PROPRIETARY TO CURTIS INDUSTRIES. NOT TO BE SHARED WITH THIRD PARTY WITHOUT WRITTEN PERMISSION FROM CURTIS INDUSTRIES			
CAD FILENAME: FPE280215 Rev G B 2-pr t	SCALE 1:1	DRAWN SRS	DATE 12-16-98
FOR TOLERANCE AND CHANGE INFORMATION SEE SHEET 1	SIZE B	SHT. 4 OF 4	REV. G
FPE280215			12-16-98