

## Han High Temp 16B-HSM 2xM32

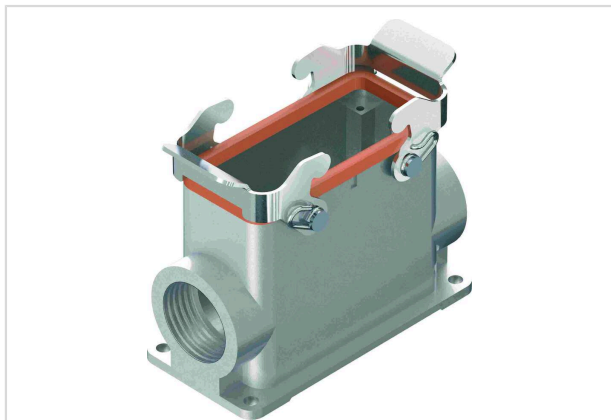


Image is for illustration purposes only. Please refer to product description.

Part number	19 62 816 0292
Specification	Han High Temp 16B-HSM 2xM32
HARTING eCatalogue	<a href="https://b2b.harting.com/19628160292">https://b2b.harting.com/19628160292</a>

### Identification

Category	Hoods/Housings
Series of hoods/housings	Han® High Temp
Type of hood/housing	Surface mounted housing
Type	High construction

### Version

Size	16 B
Version	Side entry
Cable entry	2x M32
Locking type	Double locking lever

### Technical characteristics

Limiting temperature	-40 ... +200 °C With Han® High Temp components
Note on the limiting temperature	For use as a connector according to IEC 61984.
Degree of protection acc. to IEC 60529	IP65

### Material properties

Material (hood/housing)	Aluminium die-cast
Surface (hood/housing)	Uncoated
Colour (hood/housing)	Unpainted
Material (seal)	FPM
Colour (seal)	Red
Material (locking)	Stainless steel



**Pushing Performance**  
Since 1945

## Material properties

RoHS	compliant
ELV status	compliant
China RoHS	e
REACH Annex XVII substances	Not contained
REACH ANNEX XIV substances	Not contained
REACH SVHC substances	Not contained
California Proposition 65 substances	Yes
California Proposition 65 substances	Nickel

## Commercial data

Packaging size	1
Net weight	420.67 g
Country of origin	Germany
European customs tariff number	85389099
GTIN	5713140132887
ETIM	EC000437
eCl@ss	27440202 Shell for industrial connectors