

Han-Yellock 60 HSM 2xM40

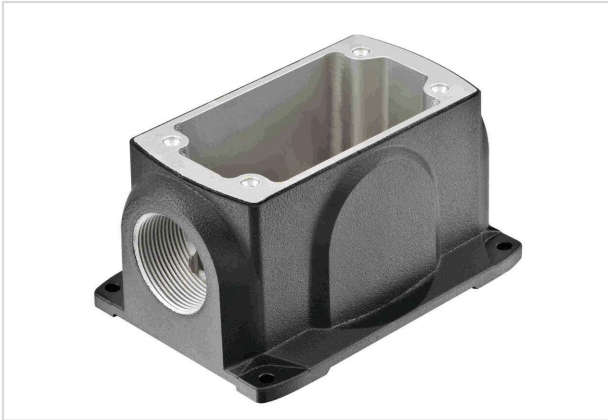


Image is for illustration purposes only. Please refer to product description.

Part number	11 12 600 1207
Specification	Han-Yellock 60 HSM 2xM40
HARTING eCatalogue	https://b2b.harting.com/11126001207

Identification

Category	Hoods/Housings
Series of hoods/housings	Han-Yellock®
Type of hood/housing	Surface mounted housing

Version

Size	Han-Yellock® 60
Version	Side entry
Cable entry	2x M40
Locking type	Screw locking
Field of application	Hoods/housings for industrial applications

Technical characteristics

Limiting temperature	-40 ... +125 °C
Note on the limiting temperature	For use as a connector according to IEC 61984.
Un-/locking temperature	-10 ... +85 °C
Degree of protection acc. to IEC 60529	IP65 IP67

Material properties

Material (hood/housing)	Zinc die-cast
Surface (hood/housing)	Powder-coated
Colour (hood/housing)	RAL 7021 (black grey)
Material (seal)	NBR



Pushing Performance
Since 1945

Material properties

Material flammability class acc. to UL 94	V-0
RoHS	compliant
ELV status	compliant
China RoHS	e
REACH Annex XVII substances	Not contained
REACH ANNEX XIV substances	Not contained
REACH SVHC substances	Not contained
California Proposition 65 substances	Yes
California Proposition 65 substances	Nickel

Specifications and approvals

Specifications	IEC 60664-1 IEC 61984
CE	Yes
Approvals	DNV GL

Commercial data

Packaging size	1
Net weight	446.5 g
Country of origin	China
European customs tariff number	85389099
GTIN	5713140110267
ETIM	EC000437
eCl@ss	27440202 Shell for industrial connectors