

DSUB SV FE TWW STR 15P AU2

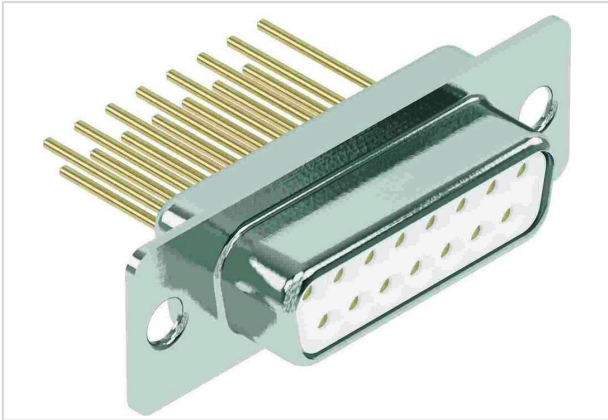


Image is for illustration purposes only. Please refer to product description.

Part number	09 67 015 4716
Specification	DSUB SV FE TWW STR 15P AU2
HARTING eCatalogue	https://b2b.harting.com/09670154716

Identification

Category	Connectors
Series	D-Sub
Identification	Standard
Element	Connector
Description of the contact	Turned Straight

Version

Termination method	Wrap termination
Gender	Female
Size	D-Sub 2
Connection type	PCB to cable
Number of contacts	15
Termination length	13.65 mm
Locking type	Fixing flange with feed through hole \varnothing 3.1 mm

Technical characteristics

Distance between rows	2.54 mm
Rated current	7.5 A
Clearance distance	≥ 1 mm
Creepage distance	≥ 1 mm
Insulation resistance	$>10^{10}$ Ω
Contact resistance	≤ 10 m Ω



Pushing Performance
 Since 1945

Technical characteristics

Limiting temperature	-55 ... +125 °C
Insertion force	≤50 N
Withdrawal force	≥4.5 N ≤33 N
Performance level	2 acc. to CECC 75301-802
Mating cycles	≥250
Test voltage $U_{r.m.s.}$	1 kV
Isolation group	IIIa (175 ≤ CTI < 400)
Hot plugging	No

Material properties

Material (insert)	Thermoplastic resin, glass-fibre filled (PBTP) Shell: Plated steel
Colour (insert)	White
Material (contacts)	Copper alloy
Surface (contacts)	Noble metal over Ni
Material flammability class acc. to UL 94	V-0
RoHS	compliant with exemption
RoHS exemptions	6(c): Copper alloy containing up to 4 % lead by weight
ELV status	compliant with exemption
China RoHS	50
REACH Annex XVII substances	Not contained
REACH ANNEX XIV substances	Not contained
REACH SVHC substances	Yes
REACH SVHC substances	Lead
ECHA SCIP number	ecef7555-f643-4ceb-a337-fc54762297f1
California Proposition 65 substances	Yes
California Proposition 65 substances	Antimony trioxide Lead Nickel
Requirement set with Hazard Levels	R26

Specifications and approvals

Specifications	DIN 41652
----------------	-----------



Pushing Performance
Since 1945

Specifications and approvals

UL / CSA UL 1977 ECBT2.E102079

Commercial data

Packaging size	50
Net weight	8.8 g
Country of origin	Germany
European customs tariff number	85366990
GTIN	5713140090811
eCl@ss	27440214 D-Sub coupler
