

## Han 40EMC-HTE-CL-29

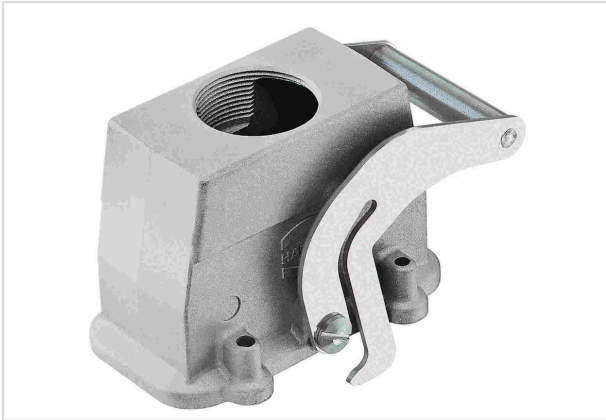


Image is for illustration purposes only. Please refer to product description.

Part number	09 62 040 0481
Specification	Han 40EMC-HTE-CL-29
HARTING eCatalogue	<a href="https://b2b.harting.com/09620400481">https://b2b.harting.com/09620400481</a>

### Identification

Category	Hoods/Housings
Series of hoods/housings	Han <sup>®</sup> EMC
Type of hood/housing	Hood

### Version

Size	16 B
Version	Top entry
Cable entry	1x Pg 29
Locking type	Central locking lever (on the hood)
Field of application	Hoods/Housings for higher EMC requirements

### Technical characteristics

Limiting temperature	-40 ... +125 °C
Note on the limiting temperature	For use as a connector according to IEC 61984.
Degree of protection acc. to IEC 60529	IP65
Type rating acc. to UL 50 / UL 50E	4 12

### Material properties

Material (hood/housing)	Aluminium die-cast
Surface (hood/housing)	Uncoated
Colour (hood/housing)	Unpainted
Material (locking)	Stainless steel



Pushing Performance  
Since 1945

## Material properties

RoHS	compliant
ELV status	compliant
China RoHS	e
REACH Annex XVII substances	Not contained
REACH ANNEX XIV substances	Not contained
REACH SVHC substances	Not contained
California Proposition 65 substances	Yes
California Proposition 65 substances	Nickel

## Specifications and approvals

UL / CSA	UL 1977 ECBT2.E235076 CSA-C22.2 No. 182.3 ECBT8.E235076
CE	Yes
Approvals	DNV GL

## Commercial data

Packaging size	1
Net weight	404 g
Country of origin	Germany
European customs tariff number	85389099
GTIN	5713140073531
ETIM	EC000437
eCl@ss	27440202 Shell for industrial connectors