

## Han EMC 6 Hood Side Entry PG 16

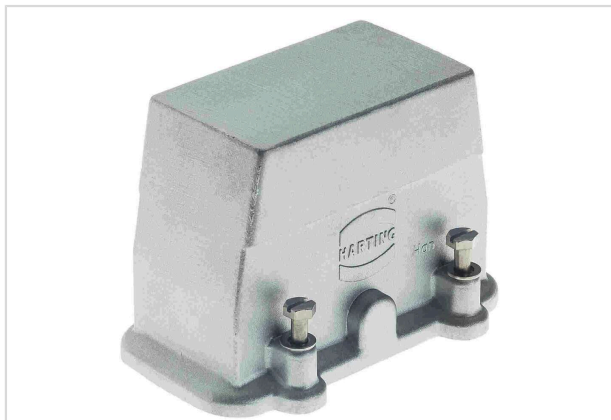


Image is for illustration purposes only. Please refer to product description.

Part number	09 62 006 0540
Specification	Han EMC 6 Hood Side Entry PG 16
HARTING eCatalogue	<a href="https://b2b.harting.com/09620060540">https://b2b.harting.com/09620060540</a>

### Identification

Category	Hoods/Housings
Series of hoods/housings	Han <sup>®</sup> EMC
Type of hood/housing	Hood

### Version

Size	6 B
Version	Side entry
Cable entry	1x Pg 16
Locking type	Screw locking
Field of application	Hoods/Housings for higher EMC requirements

### Technical characteristics

Limiting temperature	-40 ... +125 °C
Note on the limiting temperature	For use as a connector according to IEC 61984.
Degree of protection acc. to IEC 60529	IP65
Type rating acc. to UL 50 / UL 50E	4 12

### Material properties

Material (hood/housing)	Aluminium die-cast
Surface (hood/housing)	Uncoated
Colour (hood/housing)	Unpainted
RoHS	compliant



**Pushing Performance**  
Since 1945

## Material properties

ELV status	compliant
China RoHS	e
REACH Annex XVII substances	Not contained
REACH ANNEX XIV substances	Not contained
REACH SVHC substances	Not contained
California Proposition 65 substances	Yes
California Proposition 65 substances	Nickel

## Specifications and approvals

UL / CSA	UL 1977 ECBT2.E235076 CSA-C22.2 No. 182.3 ECBT8.E235076
CE	Yes
Approvals	DNV GL

## Commercial data

Packaging size	1
Net weight	218.2 g
Country of origin	Germany
European customs tariff number	85389099
GTIN	5713140073180
ETIM	EC000437
eCl@ss	27440202 Shell for industrial connectors