

Han K 8/24 Pos. F Insert Crimp

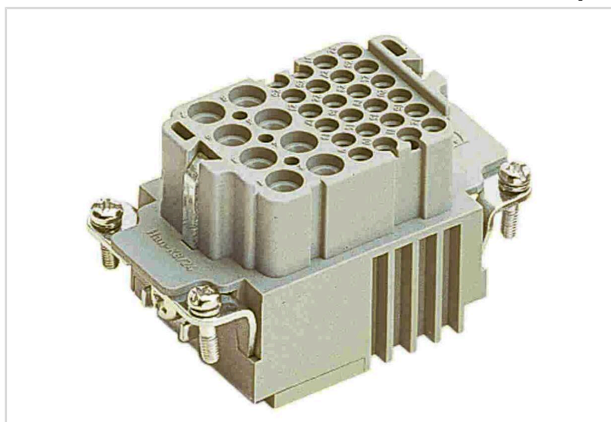


Image is for illustration purposes only. Please refer to product description.

Part number	09 38 032 3101
Specification	Han K 8/24 Pos. F Insert Crimp
HARTING eCatalogue	https://b2b.harting.com/09380323101

Identification

Category	Inserts
Series	Han-Com [®]
Identification	Han [®] K 8/24

Version

Termination method	Crimp termination
Gender	Female
Size	10 B
Number of contacts	32
Number of signal contacts	24
Number of power contacts	8
PE contact	Yes
Details	Please order crimp contacts separately.

Technical characteristics

Conductor cross-section	0.5 ... 4 mm ² 0.14 ... 2.5 mm ² Signal
Rated current	16 A
Rated voltage conductor-earth	230 V
Rated voltage conductor-conductor	400 V
Rated impulse voltage	4 kV
Pollution degree	3
Rated current (signal)	10 A



Pushing Performance
Since 1945

Technical characteristics

Rated voltage (signal)	160 V
Rated impulse voltage (signal)	2.5 kV
Pollution degree (signal)	3
Rated current acc. to UL	16 A
Rated voltage acc. to UL	600 V
Rated current acc. to UL (signal)	10 A
Rated voltage acc. to UL (signal)	600 V
Rated current acc. to CSA	16 A
Rated voltage acc. to CSA	300 V
Rated current acc. to CSA (signal)	10 A
Rated voltage acc. to CSA (signal)	300 V
Insulation resistance	$>10^{10} \Omega$
Limiting temperature	-40 ... +125 °C
Mating cycles	≥ 500

Material properties

Material (insert)	Polyamide (PA)
Colour (insert)	RAL 7032 (pebble grey)
Material flammability class acc. to UL 94	HB
RoHS	compliant
ELV status	compliant
China RoHS	e
REACH Annex XVII substances	Not contained
REACH ANNEX XIV substances	Not contained
REACH SVHC substances	Not contained
California Proposition 65 substances	Yes
California Proposition 65 substances	Lead Nickel

Specifications and approvals

Specifications	IEC 60664-1 IEC 61984
UL / CSA	UL 1977 ECBT2.E235076 CSA-C22.2 No. 182.3 ECBT8.E235076



Pushing Performance
Since 1945

Specifications and approvals

Approvals	DNV GL
-----------	--------

Commercial data

Packaging size	1
Net weight	58 g
Country of origin	Romania
European customs tariff number	85366990
GTIN	5713140056497
ETIM	EC000438
eCl@ss	27440205 Contact insert for industrial connectors