

## Han 16Ex-UL-M-C

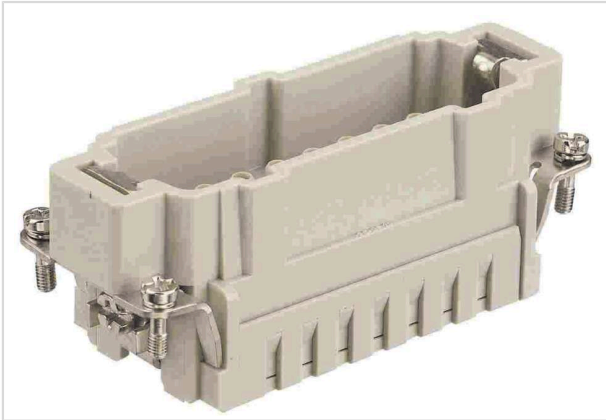


Image is for illustration purposes only. Please refer to product description.

Part number	09 36 516 2602
Specification	Han 16Ex-UL-M-C
HARTING eCatalogue	<a href="https://b2b.harting.com/09365162602">https://b2b.harting.com/09365162602</a>

### Identification

Category	Inserts
Series	Han <sup>®</sup> Ex

### Version

Termination method	Crimp termination
Gender	Male
Size	16 B
Number of contacts	16
PE contact	Yes
Details	Please order crimp contacts separately. for US purposes only
Details	ATTENTION! Only to be used with Han <sup>®</sup> Ex hoods and housings!

### Technical characteristics

Conductor cross-section	0.14 ... 4 mm <sup>2</sup>
Rated current	16 A
Rated voltage	90 V
Insulation resistance	>10 <sup>10</sup> Ω
Limiting temperature	-20 ... +40 °C
Mating cycles	≥500

### Material properties

Material (insert)	Polycarbonate (PC)
-------------------	--------------------



**Pushing Performance**  
Since 1945

## Material properties

Colour (insert)	RAL 7032 (pebble grey)
Material flammability class acc. to UL 94	V-0
RoHS	compliant
ELV status	compliant
China RoHS	e
REACH Annex XVII substances	Not contained
REACH ANNEX XIV substances	Not contained
REACH SVHC substances	Not contained
California Proposition 65 substances	Yes
California Proposition 65 substances	Lead Nickel

## Specifications and approvals

UL / CSA	UL CYJX2.E482115 CSA-C22.2 No. 213 CYJX8.E482115
----------	---

## Commercial data

Packaging size	1
Net weight	58.67 g
Country of origin	Germany
European customs tariff number	85366990
GTIN	5713140186828
ETIM	EC000438
eCl@ss	27440205 Contact insert for industrial connectors