

Han ES AV Pos. 10 Insert Term. Block lef

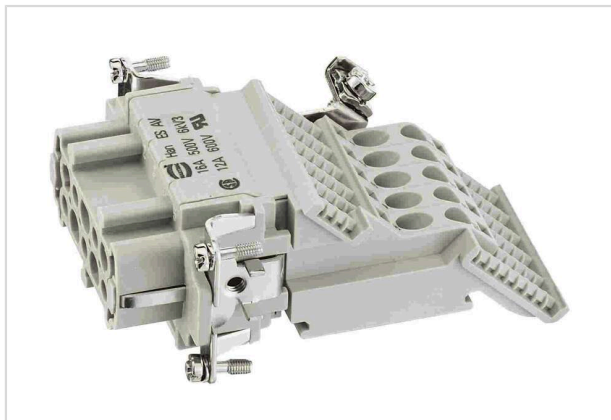


Image is for illustration purposes only. Please refer to product description.

| | |
|--------------------|---|
| Part number | 09 33 010 4729 |
| Specification | Han ES AV Pos. 10 Insert Term. Block lef |
| HARTING eCatalogue | https://b2b.harting.com/09330104729 |

Identification

| | |
|---------------|--|
| Category | Inserts |
| Series | Han [®] ES AV |
| Element | Terminal block connector |
| Specification | Left hand version Single contour (SK) |

Version

| | |
|--------------------|------------------------|
| Termination method | Cage-clamp termination |
| Gender | Female |
| Size | 10 B |
| Number of contacts | 10 |
| PE contact | Yes |

Technical characteristics

| | |
|---------------------------|------------------------------|
| Conductor cross-section | 0.14 ... 2.5 mm ² |
| Rated current | 16 A |
| Rated voltage | 500 V |
| Rated impulse voltage | 6 kV |
| Pollution degree | 3 |
| Rated current acc. to UL | 12 A |
| Rated voltage acc. to UL | 600 V |
| Rated current acc. to CSA | 12 A |
| Insulation resistance | >10 ¹⁰ Ω |



Pushing Performance
Since 1945

Technical characteristics

| | |
|----------------------|-----------------|
| Contact resistance | ≤4 mΩ |
| Limiting temperature | -40 ... +125 °C |
| Mating cycles | ≥500 |

Material properties

| | |
|---|--|
| Material (insert) | Polycarbonate (PC) |
| Colour (insert) | RAL 7032 (pebble grey) |
| Material (contacts) | Copper alloy |
| Surface (contacts) | Silver plated |
| Material flammability class acc. to UL 94 | V-0 |
| RoHS | compliant with exemption |
| RoHS exemptions | 6(c): Copper alloy containing up to 4 % lead by weight |
| ELV status | compliant with exemption |
| China RoHS | 50 |
| REACH Annex XVII substances | Not contained |
| REACH ANNEX XIV substances | Not contained |
| REACH SVHC substances | Yes |
| REACH SVHC substances | Lead |
| California Proposition 65 substances | Yes |
| California Proposition 65 substances | Lead Nickel |
| Fire protection on railway vehicles | EN 45545-2 (2020-08) |
| Requirement set with Hazard Levels | R22 (HL 1-3) R23 (HL 1-3) |

Specifications and approvals

| | |
|----------------|--------------------------|
| Specifications | IEC 60664-1 IEC 61984 |
| UL / CSA | UL 1977 ECBT2.E235076 |
| Approvals | DNV GL |

Commercial data

| | |
|-------------------|----------|
| Packaging size | 1 |
| Net weight | 104.98 g |
| Country of origin | Romania |



Pushing Performance
Since 1945

Commercial data

| | |
|--------------------------------|---|
| European customs tariff number | 85366990 |
| GTIN | 5713140051232 |
| ETIM | EC000438 |
| eCl@ss | 27440205 Contact insert for industrial connectors |