

## Han 40DD M-c

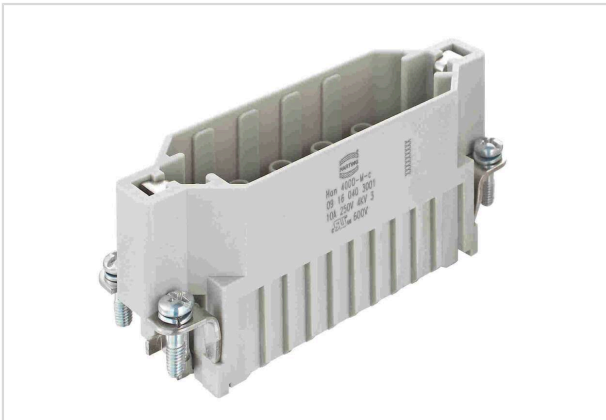


Image is for illustration purposes only. Please refer to product description.

Part number	09 16 040 3001
Specification	Han 40DD M-c
HARTING eCatalogue	<a href="https://b2b.harting.com/09160403001">https://b2b.harting.com/09160403001</a>

### Identification

Category	Inserts
Series	Han DD®

### Version

Termination method	Crimp termination
Gender	Male
Size	16 A
Number of contacts	40
PE contact	Yes
Details	Please order crimp contacts separately.

### Technical characteristics

Conductor cross-section	0.14 ... 2.5 mm <sup>2</sup>
Rated current	10 A
Rated voltage	250 V
Rated impulse voltage	4 kV
Pollution degree	3
Rated voltage acc. to UL	600 V
Rated voltage acc. to CSA	600 V
Insulation resistance	>10 <sup>10</sup> Ω
Limiting temperature	-40 ... +125 °C
Mating cycles	≥500



Pushing Performance  
Since 1945

## Material properties

Colour (insert)	RAL 7032 (pebble grey)
Material flammability class acc. to UL 94	V-0
RoHS	compliant
ELV status	compliant
China RoHS	e
REACH Annex XVII substances	Not contained
REACH ANNEX XIV substances	Not contained
REACH SVHC substances	Not contained
California Proposition 65 substances	Yes
California Proposition 65 substances	Lead Nickel

## Specifications and approvals

Specifications	IEC 60664-1 IEC 61984
UL / CSA	UL 1977 ECBT2.E235076 CSA-C22.2 No. 182.3 ECBT8.E235076
Approvals	DNV GL

## Commercial data

Packaging size	1
Net weight	35.82 g
Country of origin	China
European customs tariff number	85366990
GTIN	5713140185746
ETIM	EC000438
eCl@ss	27440205 Contact insert for industrial connectors