

Han 100A axial module, M 10-25mm² VPE200

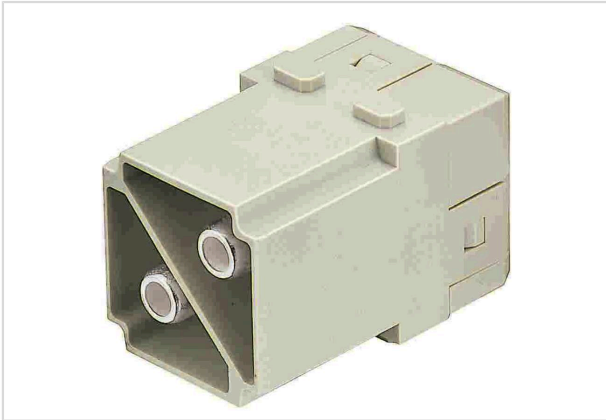


Image is for illustration purposes only. Please refer to product description.

Part number	09 14 002 2653 XL
Specification	Han 100A axial module, M 10-25mm ² VPE200
HARTING eCatalogue	https://b2b.harting.com/09140022653XL

Identification

Category	Modules
Series	Han-Modular [®]
Type of module	Han [®] 100 A module
Size of the module	Double module

Version

Termination method	Axial screw termination
Gender	Male
Number of contacts	2

Technical characteristics

Conductor cross-section	10 ... 25 mm ²
Rated current	100 A
Rated voltage	1,000 V
Rated impulse voltage	8 kV
Pollution degree	3
Rated voltage acc. to UL	600 V
Insulation resistance	>10 ¹⁰ Ω
Contact resistance	≤0.3 mΩ
Stripping length	12 ... 14 mm
Tightening torque	6 ... 7 Nm
Limiting temperature	-40 ... +125 °C



Pushing Performance
Since 1945

Technical characteristics

Mating cycles ≥500

Material properties

Material (insert)	Polycarbonate (PC)
Colour (insert)	RAL 7032 (pebble grey)
Material (contacts)	Copper alloy
Surface (contacts)	Silver plated
Material flammability class acc. to UL 94	V-0
RoHS	compliant with exemption
RoHS exemptions	6(c): Copper alloy containing up to 4 % lead by weight
ELV status	compliant with exemption
China RoHS	50
REACH Annex XVII substances	Not contained
REACH ANNEX XIV substances	Not contained
REACH SVHC substances	Yes
REACH SVHC substances	Lead
ECHA SCIP number	5dbb3851-b94e-4e88-97a1-571845975242
California Proposition 65 substances	Yes
California Proposition 65 substances	Lead

Specifications and approvals

Specifications	IEC 60664-1 IEC 61984
UL / CSA	UL 1977 ECBT2.E235076 CSA-C22.2 No. 182.3 ECBT8.E235076 UL 2237 PVVA2.E318390 CSA-C22.2 No. 182.3 PVVA8.E318390
Approvals	DNV GL

Commercial data

Packaging size	200
Net weight	70.5 g
Country of origin	Germany
European customs tariff number	85389099
GTIN	5713140184558



Pushing Performance
Since 1945

Commercial data

ETIM

EC000438

eCl@ss

27440217 Module for industrial connectors (power/signals)