

Han 70A axial module, male 14-22mm²

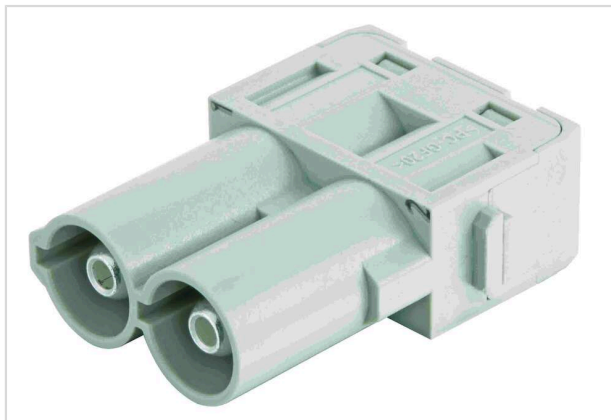


Image is for illustration purposes only. Please refer to product description.

| | |
|--------------------|---|
| Part number | 09 14 002 2647 |
| Specification | Han 70A axial module, male 14-22mm ² |
| HARTING eCatalogue | https://b2b.harting.com/09140022647 |

Identification

| | |
|--------------------|------------------------------|
| Category | Modules |
| Series | Han-Modular [®] |
| Type of module | Han [®] 70 A module |
| Size of the module | Single module |

Version

| | |
|--------------------|-------------------------|
| Termination method | Axial screw termination |
| Gender | Male |
| Number of contacts | 2 |

Technical characteristics

| | |
|-------------------------|---|
| Conductor cross-section | 14 ... 22 mm ² |
| Rated current | 70 A |
| Rated voltage | 1,000 V |
| Rated impulse voltage | 8 kV |
| Pollution degree | 3 |
| Insulation resistance | >10 ¹⁰ Ω |
| Contact resistance | ≤0.5 mΩ |
| Stripping length | 12.5 ... 13.5 mm |
| Tightening torque | 4 Nm @ 14 mm ² 4 Nm @ 16 mm ² 4 Nm @ 22 mm ² |
| Limiting temperature | -40 ... +125 °C |



Pushing Performance
 Since 1945

Technical characteristics

| | |
|---------------|------|
| Mating cycles | ≥500 |
|---------------|------|

Material properties

| | |
|---|--|
| Material (insert) | Polycarbonate (PC) |
| Colour (insert) | RAL 7032 (pebble grey) |
| Material (contacts) | Copper alloy |
| Surface (contacts) | Silver plated |
| Material flammability class acc. to UL 94 | V-0 |
| RoHS | compliant with exemption |
| RoHS exemptions | 6(c): Copper alloy containing up to 4 % lead by weight |
| ELV status | compliant with exemption |
| China RoHS | 50 |
| REACH Annex XVII substances | Not contained |
| REACH ANNEX XIV substances | Not contained |
| REACH SVHC substances | Yes |
| REACH SVHC substances | Lead |
| ECHA SCIP number | 5dbb3851-b94e-4e88-97a1-571845975242 |
| California Proposition 65 substances | Yes |
| California Proposition 65 substances | Lead Nickel |
| Fire protection on railway vehicles | EN 45545-2 (2020-08) |
| Requirement set with Hazard Levels | R22 (HL 1-3) R23 (HL 1-3) |

Specifications and approvals

| | |
|----------------|---|
| Specifications | IEC 60664-1 IEC 61984 |
| UL / CSA | UL 1977 ECBT2.E235076 UL 2237 PVVA2.E318390 CSA-C22.2 No. 182.3 PVVA8.E318390 |
| Approvals | DNV GL |

Commercial data

| | |
|-------------------|---------|
| Packaging size | 2 |
| Net weight | 31.86 g |
| Country of origin | Germany |



Pushing Performance
Since 1945

Commercial data

| | |
|--------------------------------|---|
| European customs tariff number | 85389099 |
| GTIN | 5713140019669 |
| ETIM | EC000438 |
| eCl@ss | 27440217 Module for industrial connectors (power/signals) |