

## Module Clamp for rail (1 pcs)

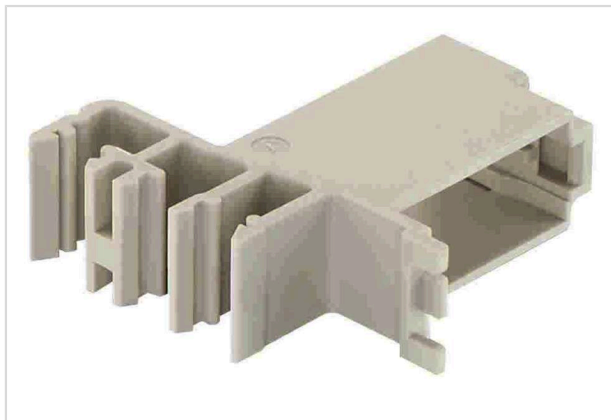


Image is for illustration purposes only. Please refer to product description.

Part number	09 14 000 0313
Specification	Module Clamp for rail (1 pcs)
HARTING eCatalogue	<a href="https://b2b.harting.com/09140000313">https://b2b.harting.com/09140000313</a>

### Identification

Category	Accessories
Series	Han-Modular®
Type of accessory	Module locking system
Description of the accessory	for rail

### Version

Pack contents	1 module locking system
---------------	-------------------------

### Material properties

Material (locking)	Polycarbonate (PC)
RoHS	compliant
ELV status	compliant
China RoHS	e
REACH Annex XVII substances	Not contained
REACH ANNEX XIV substances	Not contained
REACH SVHC substances	Yes
REACH SVHC substances	Potassium 1,1,2,2,3,3,4,4,4-nonafluorobutane-1-sulphonate
Fire protection on railway vehicles	EN 45545-2 (2020-08)
Requirement set with Hazard Levels	R22 (HL 1-3) R23 (HL 1-3)

### Commercial data

Packaging size	1
----------------	---



**Pushing Performance**  
Since 1945

## Commercial data

Net weight	13 g
Country of origin	Germany
European customs tariff number	85366990
GTIN	5713140018228
ETIM	EC002939
eCl@ss	27440392 Connector (accessories)