

Han-Power S metal 5-pole, 10mm²

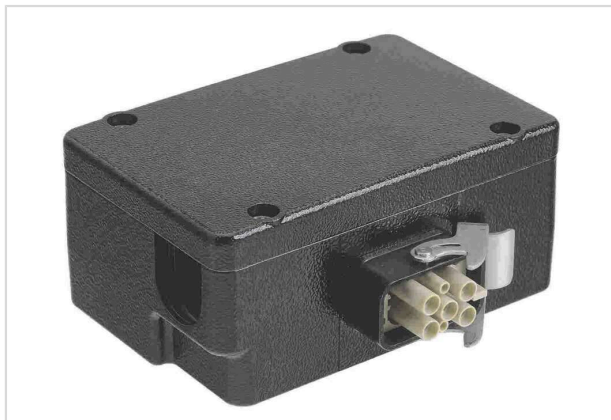


Image is for illustration purposes only. Please refer to product description.

Part number	09 12 008 4951
Specification	Han-Power S metal 5-pole, 10mm ²
HARTING eCatalogue	https://b2b.harting.com/09120084951

Identification

Category	Energy distributors
Series of hoods/housings	Han-Power [®] S
Element	Energy distributor
Specification	With 1x Han [®] Q 4/2 Female insert in Han-Compact [®] Housings, bulkhead mounting

Version

Termination method	IDC insulation displacement termination for stranded wires according to IEC 60228 Class 5
Number of contacts	6
Number of signal contacts	2
Number of power contacts	4
PE contact	Yes

Technical characteristics

Conductor cross-section	10 mm ²
Rated current	40 A
Rated voltage conductor-earth	400 V
Rated voltage conductor-conductor	690 V
Rated impulse voltage	6 kV
Pollution degree	3
Rated current (signal)	10 A
Rated voltage (signal)	250 V



Technical characteristics

Rated impulse voltage (signal)	4 kV
Pollution degree (signal)	3
Rated voltage acc. to UL	600 V
Rated voltage acc. to UL (signal)	250 V
Rated voltage acc. to CSA	250 V
Insulation resistance	>10 ¹⁰ Ω
Limiting temperature	-40 ... +125 °C
Mating cycles	≥500
Degree of protection acc. to IEC 60529	IP65

Material properties

Material (contacts)	Copper alloy
Material (hood/housing)	Aluminium die-cast
Surface (hood/housing)	Powder-coated
Colour (hood/housing)	RAL 9005 (jet black)
Material (seal)	NBR
Material flammability class acc. to UL 94	V-0
RoHS	compliant with exemption
RoHS exemptions	6(c): Copper alloy containing up to 4 % lead by weight
ELV status	compliant with exemption
China RoHS	50
REACH Annex XVII substances	Not contained
REACH ANNEX XIV substances	Not contained
REACH SVHC substances	Yes
REACH SVHC substances	Lead
ECHA SCIP number	5dbb3851-b94e-4e88-97a1-571845975242
California Proposition 65 substances	Yes
California Proposition 65 substances	Lead Nickel Naphthalene
Fire protection on railway vehicles	EN 45545-2 (2020-08)
Requirement set with Hazard Levels	R22 (HL 1-3) R23 (HL 1-3)



Pushing Performance
Since 1945

Specifications and approvals

Specifications	IEC 60664-1 IEC 61984
CE	Yes

Commercial data

Packaging size	1
Net weight	1,117.78 g
Country of origin	Germany
European customs tariff number	85366990
GTIN	5713140017955
ETIM	EC000214
eCl@ss	27142409 Small distribution board