

## Han PushPull Power T

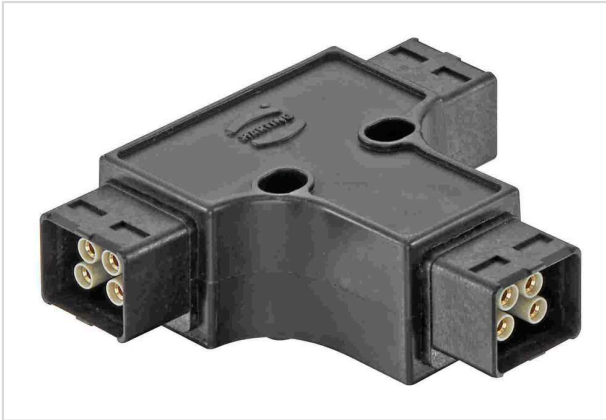


Image is for illustration purposes only. Please refer to product description.

Part number	09 12 008 4770
Specification	Han PushPull Power T
HARTING eCatalogue	<a href="https://b2b.harting.com/09120084770">https://b2b.harting.com/09120084770</a>

### Identification

Category	Energy distributors
Series of hoods/housings	Han-Power® T
Element	Energy distributor
Specification	With 3x HARTING PushPull Power Bulkhead mounted housing

### Version

Number of contacts	4
--------------------	---

### Technical characteristics

Rated current	12 A
Rated voltage	48 V
Rated impulse voltage	1.5 kV
Pollution degree	3
Insulation resistance	$>10^8 \Omega$
Limiting temperature	-40 ... +70 °C
Mating cycles	$\geq 750$
Degree of protection acc. to IEC 60529	IP65 IP67

### Material properties

Material (hood/housing)	Polyamide (PA)
Colour (hood/housing)	RAL 9005 (jet black)
Material flammability class acc. to UL 94	V-0



Pushing Performance  
Since 1945

## Material properties

RoHS	compliant with exemption
RoHS exemptions	6(c): Copper alloy containing up to 4 % lead by weight
ELV status	compliant with exemption
China RoHS	50
REACH Annex XVII substances	Not contained
REACH ANNEX XIV substances	Not contained
REACH SVHC substances	Yes
REACH SVHC substances	Lead
ECHA SCIP number	564b7d75-7bf6-4cfb-acb1-2168eb61b675
California Proposition 65 substances	Yes
California Proposition 65 substances	Lead Nickel
Fire protection on railway vehicles	EN 45545-2 (2020-08)
Requirement set with Hazard Levels	R22 (HL 1-3) R23 (HL 1-3)

## Specifications and approvals

Specifications	IEC 60664-1 IEC 61984
CE	Yes

## Commercial data

Packaging size	1
Net weight	28.5 g
Country of origin	Germany
European customs tariff number	85444290
GTIN	5713140190597
ETIM	EC000214
eCl@ss	27142409 Small distribution board