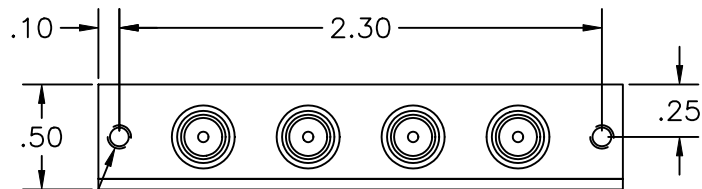


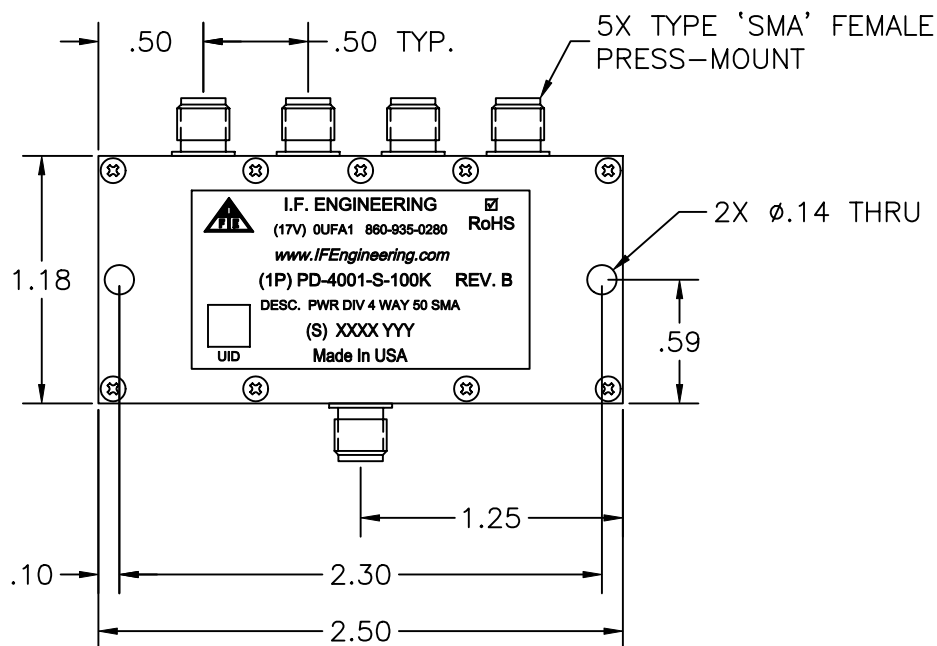
PROPRIETARY DATA OF IF Engineering Corp.  
 THIS DOCUMENT CONTAINS PROPRIETARY INFORMATION.  
 ANY REPRODUCTION, DISCLOSURE, OR USE OF  
 ITS CONTENTS IS EXPRESSLY PROHIBITED EXCEPT AS  
 AUTHORIZED BY IF Engineering Corp.

REVISION

LTR.	DESCRIPTION	DATE	APPVL.
-	RELEASED	1/13/07	LCF
A	CHANGED PER ECN 0845007	11/7/08	MJD
B	ECO #1638002	9/19/16	MJD



#4-40 UNC-2B TAP  $\nabla$ .25  
 2X N.S. 2X F.S.



ELECTRICAL SPECIFICATION  
 FOUR WAY POWER DIVIDER

FREQUENCY RANGE (MHZ)	.1-32
ISOLATION (dB) MIN.	40
INSERTION LOSS (dB) MAX.	0.3
AMPLITUDE BAL. (dB) MAX.	$\pm 0.15$
PHASE BAL. ( $^{\circ}$ ) MAX.	$\pm 1.0$
VSWR MAX.	
IN	1.2:1
OUT	1.2:1
IMPEDANCE (OHMS) NOM.	50
TEMPERATURE RANGE ( $^{\circ}$ C)	0 TO +70

UNLESS OTHERWISE SPECIFIED DRAWING PRACTICES PER ASME Y14.100		DRAWN	DATE
		LCF	1/13/07
TOLERANCES ANGLES $\pm 1/2^{\circ}$		ENGRG APPD	DATE
.XX $\pm 0.01$	.XXX $\pm 0.005$	AFB	11/28/08
SURFACE 63/ REMOVE BURRS		MFG APPD	DATE
ROUGHNESS $\checkmark$	SHARP EDGES	EDW	11/28/08
MATERIAL: SEE NOTE 1		QA APPD	DATE
		EJS	11/28/08
FINISH: SEE NOTE 2		RELEASED	DATE
		LCF	1/13/07

**IF ENGINEERING**  
 3 FOSHAY ROAD, DUDLEY MA 01571

TITLE  
 OUTLINE DRAWING  
 PD-4001-S-100K

SIZE	CODE IDENT NO.	DRAWING NO.	REV.
A	OUF A1	004-134-181	B
SCALE 1:1		SHEET 1 OF 1	

NOTES:

1. MATERIAL: CHASSIS & COVER ALUMINUM
2. FINISH: CLEAR CHROMATE
3. SPECIFICATION SUBJECT TO CHANGE WITHOUT NOTICE