

# PCM-LS | Limit stop spacers for hinges

Ganter Norm GN 2374

Steel



- 1
- 2
- 3
- 4
- 5
- 6
- 7
- 8
- 9
- 10
- 11
- 12
- 13
- 14
- 15
- 16
- 17
- 18

## MATERIAL

Cast zinc-plated steel, epoxy resin coating, RAL 9005 black colour, matte finish.

## STOP LIMIT ELEMENT

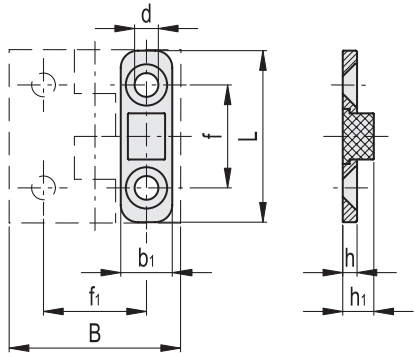
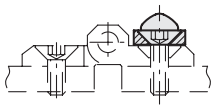
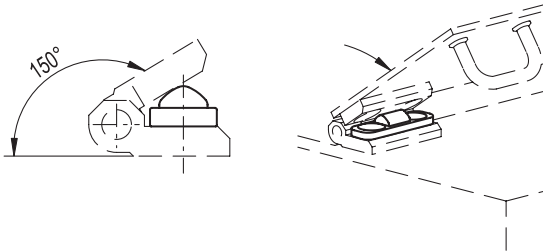
Rubber NBR, hardness 85 tolerance  $\pm 5$  Shore A, black colour.

## MAX. WORKING TEMPERATURE

120°C.

## FEATURES AND APPLICATIONS

PCM-LS limit stop spacers are a useful accessory for the hinges CFM. / CMM. / CMM-SST / CMMY. to limit the rotation angle to 150°.



Conversion Table	
1 mm = 0.039 inch	
mm	inch
40	1.57
50	1.97
60	2.36



Code	Description	L	B	d	f	f <sub>1</sub>	h	h <sub>1</sub>	b <sub>1</sub>	
429051	PCM-LS-40-150	40	40	5.3	25	25	3.5	7.8	12	10
429061	PCM-LS-50-150	50	50	6.3	30	30	4	9.2	15	13
429071	PCM-LS-60-150	60	60	8.3	36	36	5	10.9	18	16

Hinges and accessories