

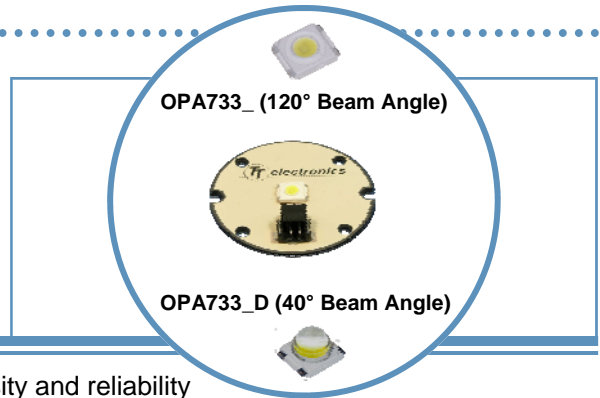
# OPA733 Series

## 1 Watt Light Spot on OptoTherm Linear Heat Spreader



### OPA733 Series

- 1 watt LED on round substrate
- Mono-color per strip (Blue, Green, Red, Yellow, White)
- Two component beam angle options (120° or 40°)
- Universal connector (Tyco 2-292173-2 mates with 173977-2)
- RoHS Compliant



The **OPA733** Series are designed for areas where lighting intensity and reliability are essential. The light beam angles of 40° and 120° are ideal for illuminating small and medium size areas while requiring minimal space. A High Performance Heat Spreader (HPHS) is used to ensure the best heat dissipation of any light assembly in the industry.

For custom colors and design contact your OPTEK representative.

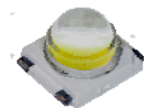
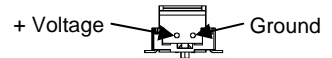
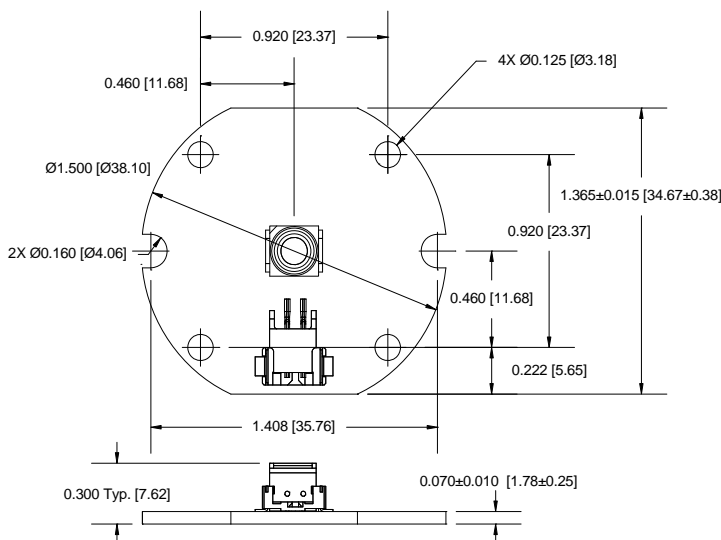
### Electrical / Optical Characteristics: $T_A=25^\circ\text{C}$ , $I_F=350\text{mA}$

Part Number	Typical Forward Voltage (V)	Luminous Flux (lm)	Beam Angle	Color	Dominant Wavelength
OPA733Y	2.5	26	120°	Yellow	587 nm
OPA733B	3.6	9		Blue	470 nm
OPA733G	3.6	48		Green	530 nm
OPA733R	2.5	35		Red	625 nm
OPA733W	3.6	48		White	6,500°K
OPA733YD	2.5	26	40°	Yellow	587 nm
OPA733BD	3.6	9		Blue	470 nm
OPA733GD	3.6	48		Green	530 nm
OPA733RD	2.5	35		Red	625 nm
OPA733WD	3.6	48		White	6,500°K



**OPA733\_**

See OVSP\_BCR4 for component specifications



**OPA733\_D**

See OVSP\_4CR44 for component specifications



**DO NOT LOOK DIRECTLY AT LED WITH UNSHIELDED EYES OR DAMAGE TO RETINA MAY OCCUR.**

OPTEK reserves the right to make changes at any time in order to improve design and to supply the best product possible.