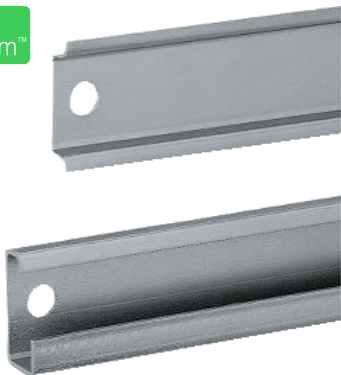


Product data sheet

Specifications



One symmetric mounting rail 35x15 L1000mm type A Supply: 20

NSYSDR100A

Main

Anwendung	Multi-purpose
Range	Spacial
Product or component type	Rail
Accessory / separate part category	Mounting accessory
Type of rail	Symmetrical DIN
Enclosure nominal dimensions	-
Range compatibility	Spacial (Spacial CRN) Spacial (Spacial S3D) Spacial (Spacial S3X) Thalassa (Thalassa PLM)
Device composition	fixing elements 1 rail
Quantity per set	Set of 20

Complementary

Material	Zinc coated steel
Surface finish	Zinc coated
Fixing mode	By fixing element - structure of enclosure location
Adjustment	Continuous adjustment Pitch 25 mm
Length	Nominal: 1000 mm Real: 950 mm
Height	15 mm nominal:
Width	35 mm nominal:
Thickness	1.5 mm

Packing Units

Unit Type of Package 1	PCE
Number of Units in Package 1	1
Package 1 Height	1.5 cm
Package 1 Width	3.5 cm
Package 1 Length	94.5 cm

Package 1 Weight	656 g
------------------	-------

Offer Sustainability

Sustainable offer status	Green Premium product
REACH Regulation	REACH Declaration
REACH free of SVHC	Yes
EU RoHS Directive	Pro-active compliance (Product out of EU RoHS legal scope) EU RoHS Declaration
Toxic heavy metal free	Yes
Mercury free	Yes
China RoHS Regulation	China RoHS declaration Pro-active China RoHS declaration (out of China RoHS legal scope)
RoHS exemption information	Yes
Environmental Disclosure	Product Environmental Profile

Contractual warranty

Warranty	18 months
----------	-----------

Recommended replacement(s)