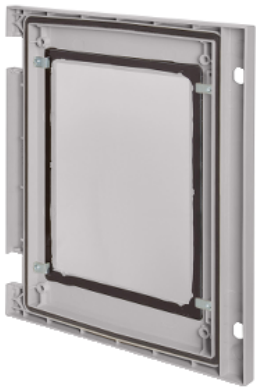


Product data sheet

Specifications



Glazed door for PLM75T wihtout locking

NSYDPLM75TG

Main

| | |
|------------------------------------|-------------------------|
| Range | Thalassa |
| Accessory / separate part category | Enclosure accessory |
| Product or component type | Door |
| Application | Multi-purpose |
| For enclosure nominal dimensions | - |
| Mounting location | Front |
| Range compatibility | Thalassa (Thalassa PLM) |
| Device composition | 1 door |
| Quantity per set | Set of 1 |

Complementary

| | |
|-------------------|--------------------------------------------|
| Material | Door: polyester reinforced with fibreglass |
| Colour | Door: grey (RAL 7035) |
| Door type | Glazed |
| Door opening side | Right (180 °) Left |
| Maximum load | 50 kg/m² |
| Height | 747 mm |
| Width | 536 mm |

Packing Units

| | |
|------------------------------|----------|
| Unit Type of Package 1 | PCE |
| Number of Units in Package 1 | 1 |
| Package 1 Height | 56.0 cm |
| Package 1 Width | 5.0 cm |
| Package 1 Length | 77.0 cm |
| Package 1 Weight | 4.679 kg |

Disclaimer: This documentation is not intended as a substitute for and is not to be used for determining suitability or reliability of these products for specific user applications

Offer Sustainability

| | |
|----------------------------|-----------------------------------------------------------------------------------------------------------------------|
| REACH Regulation | REACH Declaration |
| EU RoHS Directive | Pro-active compliance (Product out of EU RoHS legal scope) EU RoHS Declaration |
| Mercury free | Yes |
| China RoHS Regulation | China RoHS declaration Product out of China RoHS scope. Substance declaration for your information |
| RoHS exemption information | Yes |

Recommended replacement(s)