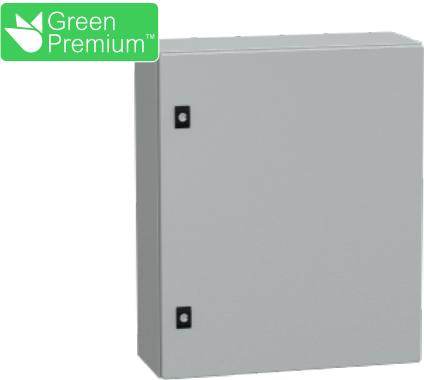


# Product data sheet

Specifications



Spacial CRN plain door w/o  
mount.plate. H600xW500xD200  
IP66 IK10 RAL7035..

NSYCRN65200

## Main

Range	Spacial
Product name	Spacial CRN
Application	Multi-purpose
Category	Compact enclosure
Enclosure nominal height	600 mm
Enclosure nominal width	500 mm
Enclosure nominal depth	200 mm
Installation accessory type	Wall-mounting
Device composition	1 body 1 cable gland plate 1 door 1 lock
Door type	Plain
Mounting plate description	Without mounting plate

## Complementary

Body type	Sides made from a single folded section Back welded with double profile forming a protected sealed area
Number of doors	Front face: 1 door(s)
Door opening side	Reversible (120 °)
Lock type	3 mm double-bar lock
Type of gland plate	Standard
Accessibility for operation	Front
Removable parts	Door by hinges Cable gland plate by screws
Material	Body: steel
Surface finish	Epoxy-polyester powder
Colour	Grey (RAL 7035)
Standards	IEC 62208
Product certifications	cUL UL DNV-GL
Net weight	11.182 kg

Environment

IP degree of protection	IP66 conforming to IEC 60529
IK degree of protection	IK10 conforming to IEC 62262

Packing Units

Unit Type of Package 1	PCE
Number of Units in Package 1	1
Package 1 Height	21.500 cm
Package 1 Width	51.000 cm
Package 1 Length	61.500 cm
Package 1 Weight	11.829 kg
Unit Type of Package 2	PAM
Number of Units in Package 2	30
Package 2 Height	220.000 cm
Package 2 Width	100.000 cm
Package 2 Length	120.000 cm
Package 2 Weight	367.870 kg

Offer Sustainability

Sustainable offer status	Green Premium product
REACH Regulation	<a href="#">REACH Declaration</a>
EU RoHS Directive	Pro-active compliance (Product out of EU RoHS legal scope) <a href="#">EU RoHS Declaration</a>
Mercury free	Yes
China RoHS Regulation	<a href="#">China RoHS declaration</a> Product out of China RoHS scope. Substance declaration for your information
RoHS exemption information	<a href="#">Yes</a>
Environmental Disclosure	<a href="#">Product Environmental Profile</a>

Contractual warranty

Warranty	18 months
----------	-----------

Recommended replacement(s)