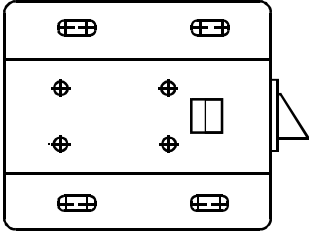
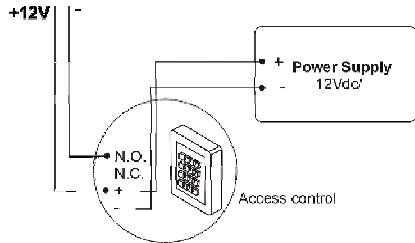


# CABINETLOCK11

## Cabinet Lock Dead Bolt



### Wiring Diagram:



### SPECIFICATION

Working Voltage: DC 12V  
 Working Current: 0.6A  
 Length Extension of Lockpin: 10MM  
 Weight: 0.16KG  
 Dimension: 55x43x28MM  
 2.2" x 1.7" x 1.1" (inches)  
 FEATURE: Fail Secure (NO)

### Installation Diagram of Cabinet Lock

