

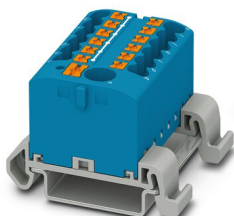
# PTFIX 6/12X2,5-NS35A BU - Distribution block



3273222

<https://www.phoenixcontact.com/us/products/3273222>

Please be informed that the data shown in this PDF document is generated from our online catalog. Please find the complete data in the user documentation. Our general terms of use for downloads are valid.



Distribution block, Block with horizontal alignment and integrated supply, nom. voltage: 690 V, nominal current: 24 A, number of connections: 13, connection method: Push-in connection, Load contact, cross section: 0.14 mm<sup>2</sup> - 4 mm<sup>2</sup>, Push-in connection, Line contact, Rated cross section: 6 mm<sup>2</sup>, cross section: 0.5 mm<sup>2</sup> - 10 mm<sup>2</sup>, mounting type: NS 35/7,5, NS 35/15, color: blue

## Your advantages

- Space savings of up to 50 % on the DIN rail, thanks to transverse mounting
- Flexible use, thanks to DIN rail mounting, direct mounting or adhesive mounting
- Time-saving conductor connection, thanks to tool-free Push-in direct connection technology
- Time savings of up to 80 %, thanks to ready-to-mount blocks without manual bridging
- Clear wiring, thanks to eleven different color variants

## Commercial data

|                                      |                     |
|--------------------------------------|---------------------|
| Item number                          | 3273222             |
| Packing unit                         | 1 pc                |
| Minimum order quantity               | 8 pc                |
| Sales key                            | BE09                |
| Product key                          | BEA123              |
| Catalog page                         | Page 445 (C-1-2019) |
| GTIN                                 | 4055626391748       |
| Weight per piece (including packing) | 33.92 g             |
| Weight per piece (excluding packing) | 33.918 g            |
| Customs tariff number                | 85369010            |
| Country of origin                    | PL                  |

## Technical data

### Notes

|         |  |
|---------|--|
| General | the blocks can be bridged with one another via the conductor shaft, for corresponding plug-in bridges, see accessories                                   |
| General |  |
| Note    | The maximum load current of a single clamping unit must not be exceeded.   |
|         | For power distribution applications, IEC 60364-4-43:2008; modified + corrigendum Okt. 2008 (DIN VDE 0100-430:2010-10) section 433.2 ff must be observed! |

### Product properties

|                       |                            |
|-----------------------|----------------------------|
| Product type          | Distributor terminal block |
| Number of connections | 13                         |
| Number of rows        | 1                          |
| Potentials            | 1                          |

### Insulation characteristics

|                      |     |
|----------------------|-----|
| Overvoltage category | III |
| Degree of pollution  | 3   |

### Electrical properties

|   |        |
|---|--------|
| Rated surge voltage                             | 8 kV   |
| Maximum power dissipation for nominal condition | 0.77 W |

### Connection data

|                                 |                     |
|---------------------------------|---------------------|
| Service Entrance                | yes                 |
| Number of connections per level | 13                  |
| Nominal cross section           | 2.5 mm <sup>2</sup> |
| Rated cross section AWG         | 14                  |

### Load contact

|   |  |
|---|--|
| Stripping length  | 8 mm ... 10 mm   |
| Internal cylindrical gage   | A3   |
| Connection in acc. with standard                                  | IEC 60947-7-1  |
| Conductor cross section rigid                                     | 0.14 mm <sup>2</sup> ... 4 mm <sup>2</sup>             |
| Cross section AWG   | 26 ... 12 (converted acc. to IEC)                      |
| Conductor cross section flexible                                  | 0.14 mm <sup>2</sup> ... 2.5 mm <sup>2</sup>           |
| Conductor cross section, flexible [AWG]                           | 26 ... 14 (converted acc. to IEC)                      |
| Conductor cross-section flexible (ferrule without plastic sleeve) | 0.14 mm <sup>2</sup> ... 2.5 mm <sup>2</sup>           |
| Flexible conductor cross section (ferrule with plastic sleeve)    | 0.14 mm <sup>2</sup> ... 2.5 mm <sup>2</sup>           |
| Nominal current   | 24 A   |
| Maximum load current  | 32 A (with 4 mm <sup>2</sup> conductor cross section)  |
| Maximum total current   | 57 A (with 10 mm <sup>2</sup> conductor cross section) |

# PTFIX 6/12X2,5-NS35A BU - Distribution block



3273222

<https://www.phoenixcontact.com/us/products/3273222>

|                 |       |
|-----------------|-------|
| Nominal voltage | 690 V |
|-----------------|-------|

## Line contact

|   |  |
|---|--|
| Stripping length  | 10 mm ... 12 mm  |
| Connection in acc. with standard  | IEC 60947-7-1  |
| Conductor cross section rigid   | 0.5 mm <sup>2</sup> ... 10 mm <sup>2</sup>             |
| Cross section AWG   | 20 ... 8 (converted acc. to IEC)                       |
| Conductor cross section flexible  | 0.5 mm <sup>2</sup> ... 10 mm <sup>2</sup>             |
| Conductor cross section, flexible [AWG]   | 20 ... 10 (converted acc. to IEC)                      |
| Conductor cross-section flexible (ferrule without plastic sleeve)   | 0.5 mm <sup>2</sup> ... 6 mm <sup>2</sup>              |
| Flexible conductor cross section (ferrule with plastic sleeve)  | 0.5 mm <sup>2</sup> ... 6 mm <sup>2</sup>              |
| Conductor cross-section flexible (2 conductors with the same cross-section, with TWIN ferrule and plastic sleeve) | 0.5 mm <sup>2</sup> ... 1.5 mm <sup>2</sup>            |
| 2 conductors with the same cross section, flexible, with TWIN ferrule with plastic sleeve                         | 0.5 mm <sup>2</sup> ... 1.5 mm <sup>2</sup>            |
| Nominal current   | 41 A (with 6 mm <sup>2</sup> conductor cross section)  |
| Maximum load current  | 57 A (with 10 mm <sup>2</sup> conductor cross section) |
| Nominal cross section   | 6 mm <sup>2</sup>                                      |

## Load contact Connection cross sections directly pluggable

|   |  |
|---|--|
| Conductor cross section rigid                                     | 0.34 mm <sup>2</sup> ... 4 mm <sup>2</sup>   |
| Conductor cross section, rigid [AWG]                              | 24 ... 12 (converted acc. to IEC)            |
| Conductor cross-section flexible (ferrule without plastic sleeve) | 0.34 mm <sup>2</sup> ... 2.5 mm <sup>2</sup> |
| Flexible conductor cross section (ferrule with plastic sleeve)    | 0.34 mm <sup>2</sup> ... 2.5 mm <sup>2</sup> |

## Line contact Connection cross sections directly pluggable

|   |  |
|---|--|
| Conductor cross section rigid                                     | 1 mm <sup>2</sup> ... 10 mm <sup>2</sup> |
| Conductor cross-section flexible (ferrule without plastic sleeve) | 1 mm <sup>2</sup> ... 6 mm <sup>2</sup>  |
| Flexible conductor cross section (ferrule with plastic sleeve)    | 1 mm <sup>2</sup> ... 6 mm <sup>2</sup>  |

## Dimensions

|                    |         |
|--------------------|---------|
| Width              | 41 mm   |
| Height             | 45.7 mm |
| Depth on NS 35/7,5 | 30.9 mm |

## Material specifications

|   |             |
|---|-------------|
| Color   | blue        |
| Flammability rating according to UL 94                                  | V0          |
| Insulating material group   | I           |
| Insulating material   | PA          |
| Static insulating material application in cold                          | -60 °C      |
| Temperature index of insulation material (DIN EN 60216-1 (VDE 0304-21)) | 130 °C      |
| Relative insulation material temperature index (Elec., UL 746 B)        | 130 °C      |
| Fire protection for rail vehicles (DIN EN 45545-2) R22                  | HL 1 - HL 3 |
| Fire protection for rail vehicles (DIN EN 45545-2) R23                  | HL 1 - HL 3 |

# PTFIX 6/12X2,5-NS35A BU - Distribution block



3273222

<https://www.phoenixcontact.com/us/products/3273222>

|   |             |
|---|-------------|
| Fire protection for rail vehicles (DIN EN 45545-2) R24  | HL 1 - HL 3 |
| Fire protection for rail vehicles (DIN EN 45545-2) R26  | HL 1 - HL 3 |
| Calorimetric heat release NFPA 130 (ASTM E 1354)        | 28 MJ/kg    |
| Surface flammability NFPA 130 (ASTM E 162)              | passed      |
| Specific optical density of smoke NFPA 130 (ASTM E 662) | passed      |
| Smoke gas toxicity NFPA 130 (SMP 800C)                  | passed      |

## Electrical tests

### Surge voltage test

|                       |             |
|-----------------------|-------------|
| Test voltage setpoint | 9.8 kV      |
| Result                | Test passed |

### Temperature-rise test

|   |                                     |
|---|-------------------------------------|
| Requirement temperature-rise test               | Increase in temperature $\leq 45$ K |
| Result  | Test passed                         |
| Short-time withstand current 6 mm <sup>2</sup>  | 0.72 kA                             |
| Short-time withstand current 10 mm <sup>2</sup> | 1.2 kA                              |
| Result  | Test passed                         |

### Power-frequency withstand voltage

|                       |             |
|-----------------------|-------------|
| Test voltage setpoint | 1.89 kV     |
| Result                | Test passed |

## Mechanical properties

### Mechanical data

|                 |    |
|-----------------|----|
| Open side panel | No |
|-----------------|----|

## Mechanical tests

### Mechanical strength

|        |             |
|--------|-------------|
| Result | Test passed |
|--------|-------------|

### Attachment on the carrier

|                         |   |
|-------------------------|---|
| DIN rail/fixing support | NS 35   |
| Test force setpoint     | 5 N   |
| Result                  | Test passed   |
| Note                    | <p>When aligning several blocks, it is recommended to either place a DIN rail adapter underneath the connection point or a flange element between the blocks.</p> <p>For versions with 6 or 7 connections, it is enough to place one DIN rail adapter centrally per block and place flange elements after every other block.</p> <p>When using the DIN rail adapter PTFIX-NS35, an aligned block must not protrude by more than a half.</p> |

### Test for conductor damage and slackening

|                |        |
|----------------|--------|
| Rotation speed | 10 rpm |
|----------------|--------|

# PTFIX 6/12X2,5-NS35A BU - Distribution block



3273222

<https://www.phoenixcontact.com/us/products/3273222>

|                                |                              |
|--------------------------------|------------------------------|
| Revolutions                    | 135                          |
| Conductor cross section/weight | 0.5 mm <sup>2</sup> / 0.3 kg |
|                                | 6 mm <sup>2</sup> / 1.4 kg   |
|                                | 10 mm <sup>2</sup> / 2 kg    |
| Result                         | Test passed                  |

## Test for conductor damage and slackening

|                                |                               |
|--------------------------------|-------------------------------|
| Rotation speed                 | 10 rpm                        |
| Revolutions                    | 135                           |
| Conductor cross section/weight | 0.14 mm <sup>2</sup> / 0.2 kg |
|                                | 2.5 mm <sup>2</sup> / 0.7 kg  |
|                                | 4 mm <sup>2</sup> / 0.9 kg    |
| Result                         | Test passed                   |

## Environmental and real-life conditions

### Aging

|                    |             |
|--------------------|-------------|
| Temperature cycles | 192         |
| Result             | Test passed |

### Needle-flame test

|                  |             |
|------------------|-------------|
| Time of exposure | 30 s        |
| Result           | Test passed |

### Oscillation/broadband noise

|                        |  |
|------------------------|--|
| Specification          | DIN EN 50155 (VDE 0115-200):2008-03            |
| Spectrum               | Service life test category 2, bogie-mounted    |
| Frequency              | $f_1 = 5 \text{ Hz}$ to $f_2 = 250 \text{ Hz}$ |
| ASD level              | 6.12 (m/s <sup>2</sup> ) <sup>2</sup> /Hz      |
| Acceleration           | 3.12g  |
| Test duration per axis | 5 h  |
| Test directions        | X-, Y- and Z-axis                              |
| Result                 | Test passed                                    |

### Shocks

|                                |                                     |
|--------------------------------|-------------------------------------|
| Specification                  | DIN EN 50155 (VDE 0115-200):2008-03 |
| Pulse shape                    | Half-sine                           |
| Acceleration                   | 30g                                 |
| Shock duration                 | 18 ms                               |
| Number of shocks per direction | 3                                   |
| Test directions                | X-, Y- and Z-axis (pos. and neg.)   |
| Result                         | Test passed                         |

### Ambient conditions

|   |   |
|---|---|
| Ambient temperature (storage/transport) | -25 °C ... 60 °C (for a short time, not exceeding 24 h, -60 °C to +70 °C) |
| Ambient temperature (assembly)          | -5 °C ... 70 °C   |

# PTFIX 6/12X2,5-NS35A BU - Distribution block



3273222

<https://www.phoenixcontact.com/us/products/3273222>

|  |                 |
|--|-----------------|
| Ambient temperature (actuation)          | -5 °C ... 70 °C |
| Permissible humidity (storage/transport) | 30 % ... 70 %   |

## Standards and regulations

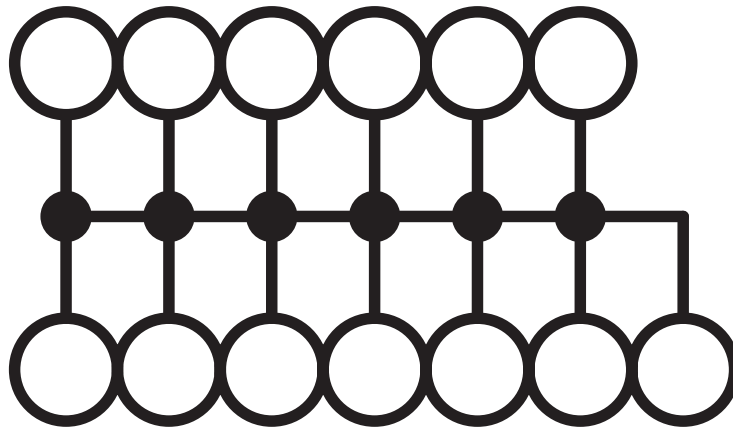
|                                  |               |
|----------------------------------|---------------|
| Connection in acc. with standard | IEC 60947-7-1 |
|                                  | IEC 60947-7-1 |

## Mounting

|               |           |
|---------------|-----------|
| Mounting type | NS 35/7,5 |
|               | NS 35/15  |

## Drawings

Circuit diagram



# PTFIX 6/12X2,5-NS35A BU - Distribution block



3273222

<https://www.phoenixcontact.com/us/products/3273222>

## Approvals

To download certificates, visit the product detail page: <https://www.phoenixcontact.com/us/products/3273222>

| <b>DNV</b><br>Approval ID: TAE00002TT-04 |                       |                       |                   |                             |
|--|-----------------------|-----------------------|-------------------|-----------------------------|
|  | Nominal voltage $U_N$ | Nominal current $I_N$ | Cross section AWG | Cross section $\text{mm}^2$ |
|  | 500 V                 | 24 A                  | -                 | -                           |

| <b>CSA</b><br>Approval ID: 13631 |                       |                       |                   |                             |
|----------------------------------|-----------------------|-----------------------|-------------------|-----------------------------|
|                                  | Nominal voltage $U_N$ | Nominal current $I_N$ | Cross section AWG | Cross section $\text{mm}^2$ |
| Use group B                      |                       |                       |                   |                             |
| Output                           | 300 V                 | 20 A                  | 26 - 12           | -                           |
| Input                            | 300 V                 | 50 A                  | 20 - 8            | -                           |
| Use group C                      |                       |                       |                   |                             |
| Output                           | 300 V                 | 20 A                  | 26 - 12           | -                           |
| Input                            | 300 V                 | 50 A                  | 20 - 8            | -                           |
| Use group D                      |                       |                       |                   |                             |
| Input                            | 600 V                 | 5 A                   | 20 - 8            | -                           |

| <b>CB</b><br>IECEx CB Scheme<br>Approval ID: DE1-62701 |                       |                       |                   |                             |
|--|-----------------------|-----------------------|-------------------|-----------------------------|
|  | Nominal voltage $U_N$ | Nominal current $I_N$ | Cross section AWG | Cross section $\text{mm}^2$ |
|  | 690 V                 | 41 A                  | -                 | -                           |

| <b>EAC</b><br>EAC<br>Approval ID: RU C-DE.BL08.B.00644 |  |  |  |  |
|--|--|--|--|--|
|--|--|--|--|--|

| <b>cULus</b><br>cULus Recognized<br>Approval ID: E60425 |                       |                       |                   |                             |
|---|-----------------------|-----------------------|-------------------|-----------------------------|
|   | Nominal voltage $U_N$ | Nominal current $I_N$ | Cross section AWG | Cross section $\text{mm}^2$ |
| Use group B   |                       |                       |                   |                             |
| Output  | 300 V                 | 20 A                  | 26 - 12           | -                           |
| Input   | 300 V                 | 50 A                  | 20 - 8            | -                           |
| Use group C   |                       |                       |                   |                             |
| Output  | 300 V                 | 20 A                  | 26 - 12           | -                           |
| Input   | 300 V                 | 50 A                  | 20 - 8            | -                           |
| Use group D   |                       |                       |                   |                             |
| Output  | 600 V                 | 5 A                   | 26 - 12           | -                           |
| Input   | 600 V                 | 5 A                   | 20 - 8            | -                           |



# PTFIX 6/12X2,5-NS35A BU - Distribution block



3273222


<https://www.phoenixcontact.com/us/products/3273222>



**LR**  
Approval ID: LR2002627TA



**BV**  
Approval ID: 59146/A0 BV

|   |  |                       |                   |                             |
|---|--|-----------------------|-------------------|-----------------------------|
|  | <b>VDE Zeichengenehmigung</b><br>Approval ID: 40047797 |                       |                   |                             |
|   | Nominal voltage $U_N$                                  | Nominal current $I_N$ | Cross section AWG | Cross section $\text{mm}^2$ |
|   | 690 V  | 41 A                  | -                 | -                           |

# PTFIX 6/12X2,5-NS35A BU - Distribution block



3273222

<https://www.phoenixcontact.com/us/products/3273222>

## Classifications

### ECLASS

|             |          |
|-------------|----------|
| ECLASS-11.0 | 27141120 |
| ECLASS-13.0 | 27250118 |

### ETIM

|          |          |
|----------|----------|
| ETIM 8.0 | EC000897 |
|----------|----------|

### UNSPSC

|             |          |
|-------------|----------|
| UNSPSC 21.0 | 39121400 |
|-------------|----------|

3273222

<https://www.phoenixcontact.com/us/products/3273222>

Environmental product compliance

|            |   |
|------------|---|
| China RoHS | Environmentally friendly use period: unlimited = EFUP-e |
|            | No hazardous substances above threshold values          |

# PTFIX 6/12X2,5-NS35A BU - Distribution block



3273222

<https://www.phoenixcontact.com/us/products/3273222>

## Accessories

**i** Note: Applying some accessories below might limit this product.

### FBS 2-5 - Plug-in bridge

3030161

<https://www.phoenixcontact.com/us/products/3030161>



Plug-in bridge, pitch: 5.2 mm, number of positions: 2, length: 23 mm, color: red

**i** Max. current carrying capacity: 24 A

---

### FBS 2-5 GN - Plug-in bridge

3032143

<https://www.phoenixcontact.com/us/products/3032143>



Plug-in bridge, pitch: 5.2 mm, number of positions: 2, color: green

**i** Max. current carrying capacity: 24 A

# PTFIX 6/12X2,5-NS35A BU - Distribution block



3273222

<https://www.phoenixcontact.com/us/products/3273222>

## FBS 2-5 BU - Plug-in bridge

3036877

<https://www.phoenixcontact.com/us/products/3036877>



Plug-in bridge, pitch: 5.2 mm, number of positions: 2, color: blue

 Max. current carrying capacity: 24 A

---

## FBS 2-5 GY - Plug-in bridge

3038969

<https://www.phoenixcontact.com/us/products/3038969>



Plug-in bridge, pitch: 5.2 mm, number of positions: 2, color: gray

 Max. current carrying capacity: 24 A

## PTFIX 6/12X2,5-NS35A BU - Distribution block



3273222

<https://www.phoenixcontact.com/us/products/3273222>

### MPS-MT SN - Test plugs

3212251

<https://www.phoenixcontact.com/us/products/3212251>



Test plugs, with solder connection up to 1 mm<sup>2</sup> conductor cross section, tin-plated surface, number of positions: 1, color: silver

---

### KLM 2 - Terminal strip marker carrier

0807575

<https://www.phoenixcontact.com/us/products/0807575>



Terminal strip marker carrier, adjustable height, for CLIPFIX 15, CLIPFIX 35, and CLIPFIX 35-5 end brackets, can be marked using snap-in labels

## PTFIX 6/12X2,5-NS35A BU - Distribution block

3273222

<https://www.phoenixcontact.com/us/products/3273222>



## KLM 3-L - Terminal strip marker carrier

0814788

<https://www.phoenixcontact.com/us/products/0814788>



Terminal strip marker carrier, adjustable height, for CLIPFIX 15, CLIPFIX 35, and CLIPFIX 35-5 end brackets, can be marked using labels in 20 x 8 mm format

---

## SZF 1-0,6X3,5 - Screwdriver

1204517

<https://www.phoenixcontact.com/us/products/1204517>



Actuation tool, for ST terminal blocks, also suitable for use as a bladed screwdriver, size: 0.6 x 3.5 x 100 mm, 2-component grip, with non-slip grip

## PTFIX 6/12X2,5-NS35A BU - Distribution block

3273222

<https://www.phoenixcontact.com/us/products/3273222>



## MPS-MT 1-S - Test plugs

1944372

<https://www.phoenixcontact.com/us/products/1944372>

Test plug, consisting of 1.0 mm Ø test pin and 2.0 mm Ø socket



---

## NS 35/ 7,5 PERF 2000MM - DIN rail perforated

0801733

<https://www.phoenixcontact.com/us/products/0801733>



DIN rail perforated, acc. to EN 60715, material: Steel, galvanized, passivated with a thick layer, Standard profile, color: silver, Pack of 25 (50 m)



# PTFIX 6/12X2,5-NS35A BU - Distribution block



3273222

<https://www.phoenixcontact.com/us/products/3273222>

## NS 35/ 7,5 UNPERF 2000MM - DIN rail, unperforated

0801681

<https://www.phoenixcontact.com/us/products/0801681>



DIN rail, unperforated, acc. to EN 60715, material: Steel, galvanized, passivated with a thick layer, Standard profile, color: silver, Pack of 25 (50 m)

---

## NS 35/ 7,5 WH PERF 2000MM - DIN rail perforated

1204119

<https://www.phoenixcontact.com/us/products/1204119>



DIN rail perforated, acc. to EN 60715, material: Steel, Galvanized, white passivated, Standard profile, color: silver, Pack of 25 (50 m)

# PTFIX 6/12X2,5-NS35A BU - Distribution block



3273222

<https://www.phoenixcontact.com/us/products/3273222>

## NS 35/ 7,5 WH UNPERF 2000MM-VPE 10 - DIN rail, unperforated

1204122

<https://www.phoenixcontact.com/us/products/1204122>



DIN rail, unperforated, acc. to EN 60715, material: Steel, Galvanized, white passivated, Standard profile, color: silver, Pack of 10 (20 m)

---

## NS 35/ 7,5 AL UNPERF 2000MM - DIN rail, unperforated

0801704

<https://www.phoenixcontact.com/us/products/0801704>



DIN rail, unperforated, acc. to EN 60715, material: Aluminum, uncoated, Standard profile, color: silver, Pack of 25 (50 m)

# PTFIX 6/12X2,5-NS35A BU - Distribution block



3273222

<https://www.phoenixcontact.com/us/products/3273222>

## NS 35/ 7,5 ZN PERF 2000MM - DIN rail perforated

1206421

<https://www.phoenixcontact.com/us/products/1206421>



DIN rail perforated, acc. to EN 60715, material: Steel, galvanized, Standard profile, color: silver, Pack of 25 (50 m)

---

## NS 35/ 7,5 ZN UNPERF 2000MM - DIN rail, unperforated

1206434

<https://www.phoenixcontact.com/us/products/1206434>



DIN rail, unperforated, acc. to EN 60715, material: Steel, galvanized, Standard profile, color: silver, Pack of 25 (50 m)

# PTFIX 6/12X2,5-NS35A BU - Distribution block



3273222

<https://www.phoenixcontact.com/us/products/3273222>

## NS 35/ 7,5 CU UNPERF 2000MM-VPE 10 - DIN rail, unperforated

0801762

<https://www.phoenixcontact.com/us/products/0801762>



DIN rail, unperforated, acc. to EN 60715, material: Copper, uncoated, Standard profile, color: copper-colored, Pack of 10 (20 m)

---

## NS 35/ 7,5 CAP - End cap

1206560

<https://www.phoenixcontact.com/us/products/1206560>

DIN rail end piece, for DIN rail NS 35/7.5



# PTFIX 6/12X2,5-NS35A BU - Distribution block



3273222

<https://www.phoenixcontact.com/us/products/3273222>

## NS 35/15 PERF 2000MM - DIN rail perforated

1201730

<https://www.phoenixcontact.com/us/products/1201730>



DIN rail perforated, similar to EN 60715, material: Steel, galvanized, passivated with a thick layer, Standard profile, color: silver, Pack of 25 (50 m)

---

## NS 35/15 UNPERF 2000MM - DIN rail, unperforated

1201714

<https://www.phoenixcontact.com/us/products/1201714>



DIN rail, unperforated, similar to EN 60715, material: Steel, galvanized, passivated with a thick layer, Standard profile, color: silver, Pack of 25 (50 m)

# PTFIX 6/12X2,5-NS35A BU - Distribution block



3273222

<https://www.phoenixcontact.com/us/products/3273222>

## NS 35/15 WH PERF 2000MM - DIN rail perforated

0806602

<https://www.phoenixcontact.com/us/products/0806602>



DIN rail perforated, similar to EN 60715, material: Steel, Galvanized, white passivated, Standard profile, color: white, Pack of 25 (50 m)

---

## NS 35/15 WH UNPERF 2000MM-VPE 10 - DIN rail, unperforated

1204135

<https://www.phoenixcontact.com/us/products/1204135>



DIN rail, unperforated, similar to EN 60715, material: Steel, Galvanized, white passivated, Standard profile, color: silver, Pack of 10 (20 m)

# PTFIX 6/12X2,5-NS35A BU - Distribution block



3273222

<https://www.phoenixcontact.com/us/products/3273222>

## NS 35/15 AL UNPERF 2000MM - DIN rail, unperforated

1201756

<https://www.phoenixcontact.com/us/products/1201756>



DIN rail, unperforated, similar to EN 60715, material: Aluminum, uncoated, Standard profile, color: silver

---

## NS 35/15 ZN PERF 2000MM - DIN rail perforated

1206599

<https://www.phoenixcontact.com/us/products/1206599>



DIN rail perforated, similar to EN 60715, material: Steel, galvanized, Standard profile, color: silver, Pack of 25 (50 m)

# PTFIX 6/12X2,5-NS35A BU - Distribution block



3273222

<https://www.phoenixcontact.com/us/products/3273222>

## NS 35/15 ZN UNPERF 2000MM - DIN rail, unperforated

1206586

<https://www.phoenixcontact.com/us/products/1206586>



DIN rail, unperforated, similar to EN 60715, material: Steel, galvanized, Standard profile, color: silver, Pack of 25 (50 m)

---

## NS 35/15 CU UNPERF 2000MM-VPE 10 - DIN rail, unperforated

1201895

<https://www.phoenixcontact.com/us/products/1201895>



DIN rail, unperforated, similar to EN 60715, material: Copper, uncoated, Standard profile, color: copper-colored, Pack of 10 (20 m)



# PTFIX 6/12X2,5-NS35A BU - Distribution block



3273222

<https://www.phoenixcontact.com/us/products/3273222>

## NS 35/15 CAP - End cap

1206573

<https://www.phoenixcontact.com/us/products/1206573>

DIN rail end piece, for DIN rail NS 35/15



---

## PAI-4-N GY - Test adapter

3032871

<https://www.phoenixcontact.com/us/products/3032871>

4 mm test adapter, for terminal blocks with 5.2 mm, 6.2 mm and 8.2 mm pitch



# PTFIX 6/12X2,5-NS35A BU - Distribution block



3273222

<https://www.phoenixcontact.com/us/products/3273222>

## MPS-MT - Test plugs

0201744

<https://www.phoenixcontact.com/us/products/0201744>



Test plugs, with solder connection up to 1 mm<sup>2</sup> conductor cross section, number of positions: 1, color: gray

---

## MPS-IH WH - Insulating sleeve

0201663

<https://www.phoenixcontact.com/us/products/0201663>

Insulating sleeve, color: white



# PTFIX 6/12X2,5-NS35A BU - Distribution block



3273222

<https://www.phoenixcontact.com/us/products/3273222>

## MPS-IH RD - Insulating sleeve

0201676

<https://www.phoenixcontact.com/us/products/0201676>

Insulating sleeve, color: red



---

## MPS-IH BU - Insulating sleeve

0201689

<https://www.phoenixcontact.com/us/products/0201689>

Insulating sleeve, color: blue



# PTFIX 6/12X2,5-NS35A BU - Distribution block



3273222

<https://www.phoenixcontact.com/us/products/3273222>

## MPS-IH YE - Insulating sleeve

0201692

<https://www.phoenixcontact.com/us/products/0201692>

Insulating sleeve, color: yellow



---

## MPS-IH GN - Insulating sleeve

0201702

<https://www.phoenixcontact.com/us/products/0201702>

Insulating sleeve, color: green



# PTFIX 6/12X2,5-NS35A BU - Distribution block



3273222

<https://www.phoenixcontact.com/us/products/3273222>

## MPS-IH GY - Insulating sleeve

0201728

<https://www.phoenixcontact.com/us/products/0201728>

Insulating sleeve, color: gray



---

## MPS-IH BK - Insulating sleeve

0201731

<https://www.phoenixcontact.com/us/products/0201731>

Insulating sleeve, color: black



# PTFIX 6/12X2,5-NS35A BU - Distribution block



3273222

<https://www.phoenixcontact.com/us/products/3273222>

## ISH 2,5/0,2 - Insulating sleeve

3002843

<https://www.phoenixcontact.com/us/products/3002843>

Insulating sleeve, color: white



---

## ISH 2,5/0,5 - Insulating sleeve

3002856

<https://www.phoenixcontact.com/us/products/3002856>

Insulating sleeve, color: gray



# PTFIX 6/12X2,5-NS35A BU - Distribution block



3273222

<https://www.phoenixcontact.com/us/products/3273222>

## ISH 2,5/1,0 - Insulating sleeve

3002869

<https://www.phoenixcontact.com/us/products/3002869>

Insulating sleeve, color: black



---

## TML (EX3,8)R - Marker strip

0801837

<https://www.phoenixcontact.com/us/products/0801837>



Marker strip, Roll, white, unlabeled, can be labeled with: THERMOMARK E.300 (D)/600 (D), THERMOMARK ROLL 2.0, THERMOMARK ROLL, THERMOMARK ROLL X1, THERMOMARK ROLLMASTER 300/600, THERMOMARK X1.2, mounting type: adhesive, lettering field size: 30000 x 3.8 mm, Number of individual labels: 12

# PTFIX 6/12X2,5-NS35A BU - Distribution block



3273222

<https://www.phoenixcontact.com/us/products/3273222>

## TML (104X3,8)R - Marker strip

0801833

<https://www.phoenixcontact.com/us/products/0801833>



Marker strip, Roll, white, unlabeled, can be labeled with: THERMOMARK E.300 (D)/600 (D), THERMOMARK ROLL 2.0, THERMOMARK ROLL, THERMOMARK ROLL X1, THERMOMARK ROLLMASTER 300/600, THERMOMARK X1.2, mounting type: adhesive, for terminal block width: 104 mm, lettering field size: 104 x 3.8 mm, Number of individual labels: 2500

---

## TML (104X2,8)R - Marker strip

0801832

<https://www.phoenixcontact.com/us/products/0801832>



Marker strip, Roll, white, unlabeled, can be labeled with: THERMOMARK E.300 (D)/600 (D), THERMOMARK ROLL 2.0, THERMOMARK ROLL, THERMOMARK ROLL X1, THERMOMARK ROLLMASTER 300/600, THERMOMARK X1.2, mounting type: adhesive, for terminal block width: 104 mm, lettering field size: 104 x 2.8 mm, Number of individual labels: 2500



# PTFIX 6/12X2,5-NS35A BU - Distribution block



3273222

<https://www.phoenixcontact.com/us/products/3273222>

## TML (EX2,8)R - Marker strip

0801836

<https://www.phoenixcontact.com/us/products/0801836>



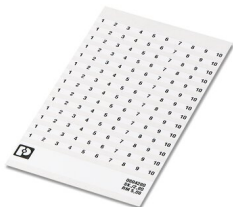
Marker strip, Roll, white, unlabeled, can be labeled with: THERMOMARK E.300 (D)/600 (D), THERMOMARK ROLL 2.0, THERMOMARK ROLL, THERMOMARK ROLL X1, THERMOMARK ROLLMaster 300/600, THERMOMARK X1.2, mounting type: adhesive, for terminal block width: 30000 mm, lettering field size: continuous x 2.8 mm

---

## SK 2,8 REEL P5,2 WH CUS - Marker card

8199986

<https://www.phoenixcontact.com/us/products/8199986>



Marker card, can be ordered: by card, white, labeled according to customer specifications, mounting type: adhesive, for terminal block width: 5.2 mm, lettering field size: continuous x 2.8 mm

## PTFIX 6/12X2,5-NS35A BU - Distribution block



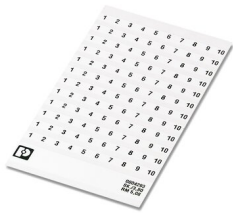
3273222

<https://www.phoenixcontact.com/us/products/3273222>

### SK 3,8 REEL P5,2 WH CUS - Marker card

8199989

<https://www.phoenixcontact.com/us/products/8199989>



Marker card, can be ordered: by card, white, labeled according to customer specifications, mounting type: adhesive, for terminal block width: 5.2 mm, lettering field size: continuous x 3.8 mm

---

### US-TML (104X3,8) - Marker for terminal blocks

0830768

<https://www.phoenixcontact.com/us/products/0830768>



Marker for terminal blocks, Card, white, unlabeled, can be labeled with: BLUEMARK ID COLOR, BLUEMARK ID, THERMOMARK PRIME, THERMOMARK CARD 2.0, THERMOMARK CARD, mounting type: adhesive, lettering field size: 104 x 3.8 mm, Number of individual labels: 22

## PTFIX 6/12X2,5-NS35A BU - Distribution block



3273222

<https://www.phoenixcontact.com/us/products/3273222>

### US-TML (104X2,8) - Marker for terminal blocks

0830767

<https://www.phoenixcontact.com/us/products/0830767>



Marker for terminal blocks, Card, white, unlabeled, can be labeled with: BLUEMARK ID COLOR, BLUEMARK ID, THERMOMARK PRIME, THERMOMARK CARD 2.0, THERMOMARK CARD, mounting type: adhesive, lettering field size: 104 x 2.8 mm, Number of individual labels: 26

---

### SK U/3,8 WH:UNBEDRUCKT - Marker card

0803906

<https://www.phoenixcontact.com/us/products/0803906>



Marker card, Din A4, white, unlabeled, can be labeled with: PLOTMARK, CMS-P1-PLOTTER, Office printing systems, mounting type: adhesive, for terminal block width: 210 mm, lettering field size: 186 x 3.8 mm, Number of individual labels: 1440

# PTFIX 6/12X2,5-NS35A BU - Distribution block



3273222

<https://www.phoenixcontact.com/us/products/3273222>

## SK U/2,8 WH:UNBEDRUCKT - Marker card

0803883

<https://www.phoenixcontact.com/us/products/0803883>

Marker card, Din A4, white, unlabeled, can be labeled with: PLOTMARK, CMS-P1-PLOTTER, Office printing systems, mounting type: adhesive, for terminal block width: 210 mm, lettering field size: 186 x 2.8 mm, Number of individual labels: 3600



---

## MM-TML (EX3,8)R C1 WH/BK - Label

1092026

<https://www.phoenixcontact.com/us/products/1092026>

Label, Roll, white/black, unlabeled, can be labeled with: THERMOFOX, THERMOMARK GO, THERMOMARK GO.K, mounting type: adhesive, lettering field size: continuous x 2.8 mm



---

Phoenix Contact 2023 © - all rights reserved  
<https://www.phoenixcontact.com>

Phoenix Contact USA  
586 Fulling Mill Road  
Middletown, PA 17057, United States  
(+717) 944-1300  
[info@phoenixcon.com](mailto:info@phoenixcon.com)