

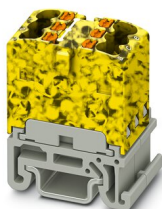
# PTFIX 6X1,5-NS15A-FE - Distribution block



3002980

<https://www.phoenixcontact.com/us/products/3002980>

Please be informed that the data shown in this PDF document is generated from our online catalog. Please find the complete data in the user documentation. Our general terms of use for downloads are valid.



Distribution block, bridged internally, nom. voltage: 500 V, nominal current: 17.5 A, number of connections: 6, connection method: Push-in connection, cross section: 0.14 mm<sup>2</sup> - 2.5 mm<sup>2</sup>, mounting type: NS 15, color: black/yellow

## Your advantages

- Clear arrangement thanks to marking of all terminal points
- Space-saving, thanks to the compact design
- Flexible use, thanks to DIN rail and direct mounting
- Space-saving potential distribution, thanks to compact micro potential distributors
- Convenient test options, thanks to test openings at every terminal point

## Commercial data

|                                      |                     |
|--------------------------------------|---------------------|
| Item number                          | 3002980             |
| Packing unit                         | 1 pc                |
| Minimum order quantity               | 20 pc               |
| Sales key                            | BE09                |
| Product key                          | BEA113              |
| Catalog page                         | Page 433 (C-1-2019) |
| GTIN                                 | 4055626433875       |
| Weight per piece (including packing) | 6.46 g              |
| Weight per piece (excluding packing) | 5.99 g              |
| Customs tariff number                | 85369010            |
| Country of origin                    | PL                  |

# PTFIX 6X1,5-NS15A-FE - Distribution block



3002980

<https://www.phoenixcontact.com/us/products/3002980>

## Technical data

### Notes

|         |  |
|---------|--|
| General | the blocks can be bridged with one another via the conductor shaft, for corresponding plug-in bridges, see accessories |
| General |  |
| Note    | The maximum load current of a single clamping unit must not be exceeded.   |

### Product properties

|                            |                            |
|----------------------------|----------------------------|
| Product type               | Distributor terminal block |
| Number of connections      | 6                          |
| Number of rows             | 1                          |
| Potentials                 | 1                          |
| Insulation characteristics |                            |
| Overvoltage category       | III                        |
| Degree of pollution        | 3                          |

### Electrical properties

|   |        |
|---|--------|
| Rated surge voltage                             | 6 kV   |
| Maximum power dissipation for nominal condition | 0.56 W |

### Connection data

|   |  |
|---|--|
| Number of connections per level                                   | 6  |
| Nominal cross section   | 1.5 mm <sup>2</sup>                          |
| Rated cross section AWG   | 14   |
| Stripping length  | 8 mm ... 10 mm                               |
| Internal cylindrical gage   | A1 / B1                                      |
| Connection in acc. with standard                                  | IEC 60947-7-1                                |
| Conductor cross section rigid                                     | 0.14 mm <sup>2</sup> ... 2.5 mm <sup>2</sup> |
| Cross section AWG   | 26 ... 14 (converted acc. to IEC)            |
| Conductor cross section flexible                                  | 0.14 mm <sup>2</sup> ... 1.5 mm <sup>2</sup> |
| Conductor cross section, flexible [AWG]                           | 26 ... 16 (converted acc. to IEC)            |
| Conductor cross-section flexible (ferrule without plastic sleeve) | 0.14 mm <sup>2</sup> ... 1.5 mm <sup>2</sup> |
| Flexible conductor cross section (ferrule with plastic sleeve)    | 0.14 mm <sup>2</sup> ... 1.5 mm <sup>2</sup> |
| Nominal current   | 17.5 A                                       |
| Maximum load current  | 22 A   |
| Maximum total current   | 26 A   |
| Nominal voltage   | 500 V  |

#### Connection cross sections directly pluggable

|   |  |
|---|--|
| Conductor cross section rigid                                     | 0.34 mm <sup>2</sup> ... 2.5 mm <sup>2</sup> |
| Conductor cross-section flexible (ferrule without plastic sleeve) | 0.34 mm <sup>2</sup> ... 1.5 mm <sup>2</sup> |

# PTFIX 6X1,5-NS15A-FE - Distribution block



3002980

<https://www.phoenixcontact.com/us/products/3002980>

|  |  |
|--|--|
| Flexible conductor cross section (ferrule with plastic sleeve) | 0.34 mm <sup>2</sup> ... 1.5 mm <sup>2</sup> |
|--|--|

## Dimensions

|                |         |
|----------------|---------|
| Width          | 12.5 mm |
| Height         | 21.6 mm |
| Depth on NS 15 | 27.4 mm |

## Material specifications

|   |              |
|---|--------------|
| Color   | black/yellow |
| Flammability rating according to UL 94                                  | V0           |
| Insulating material group   | I            |
| Insulating material   | PA           |
| Static insulating material application in cold                          | -60 °C       |
| Temperature index of insulation material (DIN EN 60216-1 (VDE 0304-21)) | 125 °C       |
| Relative insulation material temperature index (Elec., UL 746 B)        | 130 °C       |
| Fire protection for rail vehicles (DIN EN 45545-2) R22                  | HL 1 - HL 3  |
| Fire protection for rail vehicles (DIN EN 45545-2) R23                  | HL 1 - HL 3  |
| Fire protection for rail vehicles (DIN EN 45545-2) R24                  | HL 1 - HL 3  |
| Fire protection for rail vehicles (DIN EN 45545-2) R26                  | HL 1 - HL 3  |
| Calorimetric heat release NFPA 130 (ASTM E 1354)                        | 27,5 MJ/kg   |
| Surface flammability NFPA 130 (ASTM E 162)                              | passed       |
| Specific optical density of smoke NFPA 130 (ASTM E 662)                 | passed       |
| Smoke gas toxicity NFPA 130 (SMP 800C)                                  | passed       |

## Electrical tests

### Surge voltage test

|                       |             |
|-----------------------|-------------|
| Test voltage setpoint | 7.3 kV      |
| Result                | Test passed |

### Temperature-rise test

|  |                                |
|--|--------------------------------|
| Requirement temperature-rise test                | Increase in temperature ≤ 45 K |
| Result   | Test passed                    |
| Short-time withstand current 1.5 mm <sup>2</sup> | 0.18 kA                        |
| Short-time withstand current 2.5 mm <sup>2</sup> | 0.3 kA                         |
| Result   | Test passed                    |

### Power-frequency withstand voltage

|                       |             |
|-----------------------|-------------|
| Test voltage setpoint | 1.89 kV     |
| Result                | Test passed |

## Mechanical properties

### Mechanical data

|                 |    |
|-----------------|----|
| Open side panel | No |
|-----------------|----|

# PTFIX 6X1,5-NS15A-FE - Distribution block



3002980

<https://www.phoenixcontact.com/us/products/3002980>

## Mechanical tests

### Mechanical strength

|        |             |
|--------|-------------|
| Result | Test passed |
|--------|-------------|

### Attachment on the carrier

|                         |   |
|-------------------------|---|
| DIN rail/fixing support | NS 35/NS 15   |
| Test force setpoint     | 1 N   |
| Result                  | Test passed   |
| Note                    | <p>When aligning several blocks, it is recommended to either place a DIN rail adapter underneath the connection point or a flange element between the blocks.</p> <p>For versions with 6 or 7 connections, it is enough to place one DIN rail adapter centrally per block and place flange elements after every other block.</p> <p>When using the DIN rail adapter PTFIX-NS35, an aligned block must not protrude by more than a half.</p> |

### Test for conductor damage and slackening

|                                |                               |
|--------------------------------|-------------------------------|
| Rotation speed                 | 10 rpm                        |
| Revolutions                    | 135                           |
| Conductor cross section/weight | 0.14 mm <sup>2</sup> / 0.2 kg |
|                                | 1.5 mm <sup>2</sup> / 0.4 kg  |
|                                | 2.5 mm <sup>2</sup> / 0.7 kg  |
| Result                         | Test passed                   |

## Environmental and real-life conditions

### Aging

|                    |             |
|--------------------|-------------|
| Temperature cycles | 192         |
| Result             | Test passed |

### Needle-flame test

|                  |             |
|------------------|-------------|
| Time of exposure | 30 s        |
| Result           | Test passed |

### Oscillation/broadband noise

|                        |  |
|------------------------|--|
| Specification          | DIN EN 50155 (VDE 0115-200):2018-05            |
| Spectrum               | Service life test category 2, bogie-mounted    |
| Frequency              | $f_1 = 5 \text{ Hz}$ to $f_2 = 250 \text{ Hz}$ |
| ASD level              | 6.12 (m/s <sup>2</sup> ) <sup>2</sup> /Hz      |
| Acceleration           | 3.12g  |
| Test duration per axis | 0.00138888888889 h                             |
| Test directions        | X-, Y- and Z-axis                              |
| Result                 | Test passed                                    |

### Shocks

|               |                                     |
|---------------|-------------------------------------|
| Specification | DIN EN 50155 (VDE 0115-200):2018-05 |
|---------------|-------------------------------------|

# PTFIX 6X1,5-NS15A-FE - Distribution block



3002980

<https://www.phoenixcontact.com/us/products/3002980>

|                                |                                   |
|--------------------------------|-----------------------------------|
| Pulse shape                    | Half-sine                         |
| Acceleration                   | 30g                               |
| Shock duration                 | 18 ms                             |
| Number of shocks per direction | 3                                 |
| Test directions                | X-, Y- and Z-axis (pos. and neg.) |
| Result                         | Test passed                       |

## Ambient conditions

|  |   |
|--|---|
| Ambient temperature (storage/transport)  | -25 °C ... 60 °C (for a short time, not exceeding 24 h, -60 °C to +70 °C) |
| Ambient temperature (assembly)           | -5 °C ... 70 °C   |
| Ambient temperature (actuation)          | -5 °C ... 70 °C   |
| Permissible humidity (storage/transport) | 30 % ... 70 %   |

## Standards and regulations

|                                  |               |
|----------------------------------|---------------|
| Connection in acc. with standard | IEC 60947-7-1 |
|----------------------------------|---------------|

## Mounting

|               |       |
|---------------|-------|
| Mounting type | NS 15 |
|---------------|-------|

# PTFIX 6X1,5-NS15A-FE - Distribution block

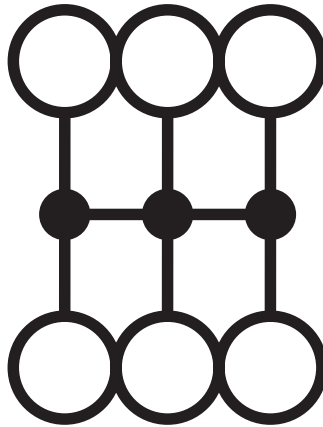
3002980

<https://www.phoenixcontact.com/us/products/3002980>



## Drawings

Circuit diagram



# PTFIX 6X1,5-NS15A-FE - Distribution block



3002980

<https://www.phoenixcontact.com/us/products/3002980>

## Approvals

To download certificates, visit the product detail page: <https://www.phoenixcontact.com/us/products/3002980>

| DNV<br>Approval ID: TAE00002TT-04 |                       |                       |                   |                             |
|-----------------------------------|-----------------------|-----------------------|-------------------|-----------------------------|
|                                   | Nominal voltage $U_N$ | Nominal current $I_N$ | Cross section AWG | Cross section $\text{mm}^2$ |
|                                   | 500 V                 | 24 A                  | -                 | -                           |

| CSA<br>Approval ID: 13631 |                       |                       |                   |                             |
|---------------------------|-----------------------|-----------------------|-------------------|-----------------------------|
|                           | Nominal voltage $U_N$ | Nominal current $I_N$ | Cross section AWG | Cross section $\text{mm}^2$ |
| Use group B               |                       |                       |                   |                             |
|                           | 300 V                 | 20 A                  | 26 - 12           | -                           |
| Use group C               |                       |                       |                   |                             |
|                           | 150 V                 | 20 A                  | 26 - 12           | -                           |
| Use group D               |                       |                       |                   |                             |
|                           | 300 V                 | 10 A                  | 26 - 12           | -                           |

| CB<br>IECEE CB Scheme<br>Approval ID: DE1-62701 |                       |                       |                   |                             |
|---|-----------------------|-----------------------|-------------------|-----------------------------|
|   | Nominal voltage $U_N$ | Nominal current $I_N$ | Cross section AWG | Cross section $\text{mm}^2$ |
|   | 500 V                 | 17.5 A                | -                 | - 1.5                       |

| EAC<br>Approval ID: RU C-DE.BL08.B.00644 |  |  |  |  |
|--|--|--|--|--|
|--|--|--|--|--|

| LR<br>Approval ID: LR2002627TA |  |  |  |  |
|--------------------------------|--|--|--|--|
|--------------------------------|--|--|--|--|

| BV<br>Approval ID: 59146/A0 BV |  |  |  |  |
|--------------------------------|--|--|--|--|
|--------------------------------|--|--|--|--|

| VDE Zeichengenehmigung<br>Approval ID: 40047797 |  |  |  |  |
|---|--|--|--|--|
|---|--|--|--|--|

| cULus Recognized<br>Approval ID: E60425 |                       |                       |                   |                             |
|---|-----------------------|-----------------------|-------------------|-----------------------------|
|   | Nominal voltage $U_N$ | Nominal current $I_N$ | Cross section AWG | Cross section $\text{mm}^2$ |
| Use group B                             |                       |                       |                   |                             |

# PTFIX 6X1,5-NS15A-FE - Distribution block



3002980

<https://www.phoenixcontact.com/us/products/3002980>

|             |       |      |         |   |
|-------------|-------|------|---------|---|
|             | 300 V | 20 A | 26 - 12 | - |
| Use group C |       |      |         |   |
|             | 150 V | 20 A | 26 - 12 | - |
| Use group F |       |      |         |   |
|             | 500 V | 20 A | 26 - 12 | - |
| Use group D |       |      |         |   |
|             | 300 V | 10 A | 26 - 12 | - |



# PTFIX 6X1,5-NS15A-FE - Distribution block



3002980

<https://www.phoenixcontact.com/us/products/3002980>

## Classifications

### ECLASS

|             |          |
|-------------|----------|
| ECLASS-11.0 | 27141120 |
| ECLASS-13.0 | 27250118 |

### ETIM

|          |          |
|----------|----------|
| ETIM 8.0 | EC000897 |
|----------|----------|

### UNSPSC

|             |          |
|-------------|----------|
| UNSPSC 21.0 | 39121400 |
|-------------|----------|

# PTFIX 6X1,5-NS15A-FE - Distribution block



3002980

<https://www.phoenixcontact.com/us/products/3002980>

## Environmental product compliance

|            |   |
|------------|---|
| China RoHS | Environmentally friendly use period: unlimited = EFUP-e |
|            | No hazardous substances above threshold values          |

# PTFIX 6X1,5-NS15A-FE - Distribution block



3002980

<https://www.phoenixcontact.com/us/products/3002980>

## Accessories



Note: Applying some accessories below might limit this product.

### FBS 2-4 - Plug-in bridge

3030116

<https://www.phoenixcontact.com/us/products/3030116>



Plug-in bridge, pitch: 4.2 mm, number of positions: 2, color: red



Max. current carrying capacity: 17.5 A

---

### FBS 2-4 BU - Plug-in bridge

3030117

<https://www.phoenixcontact.com/us/products/3030117>



Plug-in bridge, pitch: 4.2 mm, number of positions: 2, color: blue



Max. current carrying capacity: 17.5 A

## PTFIX 6X1,5-NS15A-FE - Distribution block

3002980

<https://www.phoenixcontact.com/us/products/3002980>




## FBS 2-4 GY - Plug-in bridge

3030118

<https://www.phoenixcontact.com/us/products/3030118>



Plug-in bridge, pitch: 4.2 mm, number of positions: 2, color: gray

 Max. current carrying capacity: 17.5 A

---

## MPS-MT 1-S4-B RD - Accessories

1982800

<https://www.phoenixcontact.com/us/products/1982800>

Test plug terminal block, Accessories



# PTFIX 6X1,5-NS15A-FE - Distribution block



3002980

<https://www.phoenixcontact.com/us/products/3002980>

## ISH 1,5/0,2 - Insulating sleeve

3206131

<https://www.phoenixcontact.com/us/products/3206131>

Insulating sleeve, color: white



---

## ISH 1,5/0,5 - Insulating sleeve

3031034

<https://www.phoenixcontact.com/us/products/3031034>

Insulating sleeve, color: gray



## PTFIX 6X1,5-NS15A-FE - Distribution block

3002980

<https://www.phoenixcontact.com/us/products/3002980>



## SK 3,8 REEL P4,15 WH CUS - Marker card

0825990

<https://www.phoenixcontact.com/us/products/0825990>



Marker card, can be ordered: by card, white, labeled according to customer specifications, mounting type: adhesive, for terminal block width: 4.15 mm, lettering field size: continuous x 3.8 mm

---

## TML (EX3,8)R - Marker strip

0801837

<https://www.phoenixcontact.com/us/products/0801837>



Marker strip, Roll, white, unlabeled, can be labeled with: THERMOMARK E.300 (D)/600 (D), THERMOMARK ROLL 2.0, THERMOMARK ROLL, THERMOMARK ROLL X1, THERMOMARK ROLLMaster 300/600, THERMOMARK X1.2, mounting type: adhesive, lettering field size: continuous x 3.8 mm

# PTFIX 6X1,5-NS15A-FE - Distribution block



3002980

<https://www.phoenixcontact.com/us/products/3002980>

## TML (104X3,8)R - Marker strip

0801833

<https://www.phoenixcontact.com/us/products/0801833>



Marker strip, Roll, white, unlabeled, can be labeled with: THERMOMARK E.300 (D)/600 (D), THERMOMARK ROLL 2.0, THERMOMARK ROLL, THERMOMARK ROLL X1, THERMOMARK ROLLMASTER 300/600, THERMOMARK X1.2, mounting type: adhesive, for terminal block width: 104 mm, lettering field size: 104 x 3.8 mm, Number of individual labels: 2500

---

## TML (104X2,8)R - Marker strip

0801832

<https://www.phoenixcontact.com/us/products/0801832>



Marker strip, Roll, white, unlabeled, can be labeled with: THERMOMARK E.300 (D)/600 (D), THERMOMARK ROLL 2.0, THERMOMARK ROLL, THERMOMARK ROLL X1, THERMOMARK ROLLMASTER 300/600, THERMOMARK X1.2, mounting type: adhesive, for terminal block width: 104 mm, lettering field size: 104 x 2.8 mm, Number of individual labels: 2500

## PTFIX 6X1,5-NS15A-FE - Distribution block

3002980

<https://www.phoenixcontact.com/us/products/3002980>



### TML (EX2,8)R - Marker strip

0801836

<https://www.phoenixcontact.com/us/products/0801836>



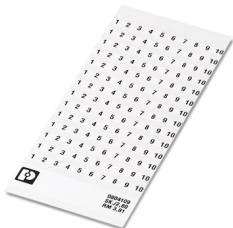
Marker strip, Roll, white, unlabeled, can be labeled with: THERMOMARK E.300 (D)/600 (D), THERMOMARK ROLL 2.0, THERMOMARK ROLL, THERMOMARK ROLL X1, THERMOMARK ROLLMASTER 300/600, THERMOMARK X1.2, mounting type: adhesive, for terminal block width: 30000 mm, lettering field size: continuous x 2.8 mm

---

### SK 2,8 REEL P4,15 WH CUS - Marker card

8199987

<https://www.phoenixcontact.com/us/products/8199987>



Marker card, can be ordered: by card, white, labeled according to customer specifications, mounting type: adhesive, for terminal block width: 4.15 mm, lettering field size: continuous x 2.8 mm



# PTFIX 6X1,5-NS15A-FE - Distribution block



3002980

<https://www.phoenixcontact.com/us/products/3002980>

## US-TML (104X3,8) - Marker for terminal blocks

0830768

<https://www.phoenixcontact.com/us/products/0830768>



Marker for terminal blocks, Card, white, unlabeled, can be labeled with: BLUEMARK ID COLOR, BLUEMARK ID, THERMOMARK PRIME, THERMOMARK CARD 2.0, THERMOMARK CARD, mounting type: adhesive, lettering field size: 104 x 3.8 mm, Number of individual labels: 22

---

## US-TML (104X2,8) - Marker for terminal blocks

0830767

<https://www.phoenixcontact.com/us/products/0830767>



Marker for terminal blocks, Card, white, unlabeled, can be labeled with: BLUEMARK ID COLOR, BLUEMARK ID, THERMOMARK PRIME, THERMOMARK CARD 2.0, THERMOMARK CARD, mounting type: adhesive, lettering field size: 104 x 2.8 mm, Number of individual labels: 26

## PTFIX 6X1,5-NS15A-FE - Distribution block



3002980

<https://www.phoenixcontact.com/us/products/3002980>

### SK U/3,8 WH:UNBEDRUCKT - Marker card

0803906

<https://www.phoenixcontact.com/us/products/0803906>



Marker card, Din A4, white, unlabeled, can be labeled with: PLOTMARK, CMS-P1-PLOTTER, Office printing systems, mounting type: adhesive, for terminal block width: 210 mm, lettering field size: 186 x 3.8 mm, Number of individual labels: 1440

---

### SK U/2,8 WH:UNBEDRUCKT - Marker card

0803883

<https://www.phoenixcontact.com/us/products/0803883>



Marker card, Din A4, white, unlabeled, can be labeled with: PLOTMARK, CMS-P1-PLOTTER, Office printing systems, mounting type: adhesive, for terminal block width: 210 mm, lettering field size: 186 x 2.8 mm, Number of individual labels: 3600

# PTFIX 6X1,5-NS15A-FE - Distribution block

3002980

<https://www.phoenixcontact.com/us/products/3002980>



## MM-TML (EX3,8)R C1 WH/BK - Label

1092026

<https://www.phoenixcontact.com/us/products/1092026>



Label, Roll, white/black, unlabeled, can be labeled with: THERMOFOX, THERMOMARK GO, THERMOMARK GO.K, mounting type: adhesive, lettering field size: continuous x 2.8 mm

---

Phoenix Contact 2023 © - all rights reserved

<https://www.phoenixcontact.com>

Phoenix Contact USA  
586 Fulling Mill Road  
Middletown, PA 17057, United States  
(+717) 944-1300  
[info@phoenixcon.com](mailto:info@phoenixcon.com)