

PTFIX 12X1,5 BK - Distribution block



3002782

<https://www.phoenixcontact.com/us/products/3002782>

Please be informed that the data shown in this PDF document is generated from our online catalog. Please find the complete data in the user documentation. Our general terms of use for downloads are valid.



Distribution block, bridged internally, nom. voltage: 450 V, nominal current: 17.5 A, number of connections: 12, connection method: Push-in connection, cross section: 0.14 mm² - 2.5 mm², mounting type: for snapping onto a DIN rail adapter, Direct mounting with flange, Free-hanging, color: black

Your advantages

- Clear arrangement thanks to marking of all terminal points
- Space-saving, thanks to the compact design
- Convenient test options, thanks to test openings at every terminal point
- Space-saving potential distribution, thanks to compact micro potential distributors
- Flexible use, thanks to direct mounting with flange covers from accessories

Commercial data

Item number	3002782
Packing unit	1 pc
Minimum order quantity	20 pc
Sales key	BE09
Product key	BEA114
Catalog page	Page 429 (C-1-2019)
GTIN	4055626432625
Weight per piece (including packing)	10.625 g
Weight per piece (excluding packing)	10.505 g
Customs tariff number	85369010
Country of origin	PL

PTFIX 12X1,5 BK - Distribution block



3002782

<https://www.phoenixcontact.com/us/products/3002782>

Technical data

Notes

General	the blocks can be bridged with one another via the conductor shaft, for corresponding plug-in bridges, see accessories
---------	--

Product properties

Product type	Distributor terminal block
Number of connections	12
Number of rows	1
Potentials	1

Insulation characteristics

Overvoltage category	III
Degree of pollution	3

Electrical properties

Rated surge voltage	6 kV
Maximum power dissipation for nominal condition	0.56 W

Connection data

Number of connections per level	12
Nominal cross section	1.5 mm ²
Rated cross section AWG	14
Stripping length	8 mm ... 10 mm
Internal cylindrical gage	A1 / B1
Connection in acc. with standard	IEC 60998-2-2
Conductor cross section rigid	0.14 mm ² ... 2.5 mm ²
Cross section AWG	26 ... 14 (converted acc. to IEC)
Conductor cross section flexible	0.14 mm ² ... 1.5 mm ²
Conductor cross section, flexible [AWG]	26 ... 16 (converted acc. to IEC)
Conductor cross-section flexible (ferrule without plastic sleeve)	0.14 mm ² ... 1.5 mm ²
Flexible conductor cross section (ferrule with plastic sleeve)	0.14 mm ² ... 1.5 mm ²
Nominal current	17.5 A
Maximum load current	22 A
Maximum total current	26 A
Nominal voltage	450 V

Connection cross sections directly pluggable

Conductor cross section rigid	0.34 mm ² ... 2.5 mm ²
Conductor cross section, rigid [AWG]	26 ... 14 (converted acc. to IEC)
Conductor cross-section flexible (ferrule without plastic sleeve)	0.34 mm ² ... 1.5 mm ²
Flexible conductor cross section (ferrule with plastic sleeve)	0.34 mm ² ... 1.5 mm ²

Dimensions

PTFIX 12X1,5 BK - Distribution block



3002782

<https://www.phoenixcontact.com/us/products/3002782>

Width	24.9 mm
Height	21.6 mm
Depth	17.7 mm

Material specifications

Color	black
Flammability rating according to UL 94	V0
Insulating material group	I
Insulating material	PA
Static insulating material application in cold	-60 °C
Temperature index of insulation material (DIN EN 60216-1 (VDE 0304-21))	130 °C
Relative insulation material temperature index (Elec., UL 746 B)	130 °C
Fire protection for rail vehicles (DIN EN 45545-2) R22	HL 1 - HL 3
Fire protection for rail vehicles (DIN EN 45545-2) R23	HL 1 - HL 3
Fire protection for rail vehicles (DIN EN 45545-2) R24	HL 1 - HL 3
Fire protection for rail vehicles (DIN EN 45545-2) R26	HL 1 - HL 3
Calorimetric heat release NFPA 130 (ASTM E 1354)	28 MJ/kg
Surface flammability NFPA 130 (ASTM E 162)	passed
Specific optical density of smoke NFPA 130 (ASTM E 662)	passed
Smoke gas toxicity NFPA 130 (SMP 800C)	passed

Mechanical properties

Mechanical data

Open side panel	No
-----------------	----

Mechanical tests

Attachment on the carrier

DIN rail/fixing support	NS 35/NS 15
Result	Test passed
Note	<p>When aligning several blocks, it is recommended to either place a DIN rail adapter underneath the connection point or a flange element between the blocks.</p> <p>For versions with 6 or 7 connections, it is enough to place one DIN rail adapter centrally per block and place flange elements after every other block.</p> <p>When using the DIN rail adapter PTFIX-NS35, an aligned block must not protrude by more than a half.</p>

Environmental and real-life conditions

Aging

Temperature cycles	192
--------------------	-----

Needle-flame test

Time of exposure	30 s
------------------	------

PTFIX 12X1,5 BK - Distribution block



3002782

<https://www.phoenixcontact.com/us/products/3002782>

Result	Test passed
--------	-------------

Ambient conditions

Ambient temperature (storage/transport)	-25 °C ... 60 °C (for a short time, not exceeding 24 h, -60 °C to +70 °C)
Ambient temperature (assembly)	-5 °C ... 70 °C
Ambient temperature (actuation)	-5 °C ... 70 °C
Permissible humidity (storage/transport)	30 % ... 70 %

Standards and regulations

Connection in acc. with standard	IEC 60998-2-2
----------------------------------	---------------

Mounting

Mounting type	for snapping onto a DIN rail adapter
	Direct mounting with flange
	Free-hanging

PTFIX 12X1,5 BK - Distribution block

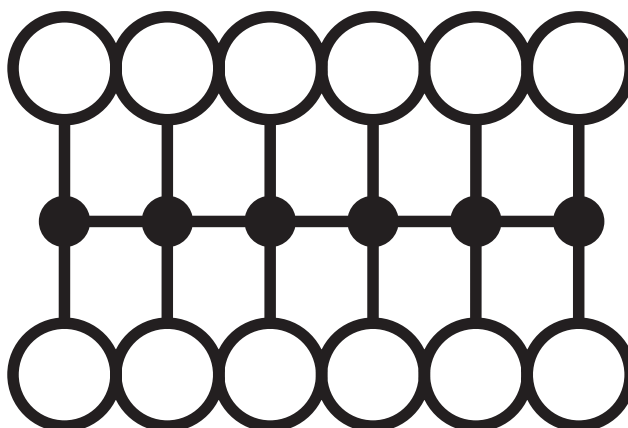
3002782

<https://www.phoenixcontact.com/us/products/3002782>



Drawings

Circuit diagram



PTFIX 12X1,5 BK - Distribution block



3002782

<https://www.phoenixcontact.com/us/products/3002782>

Approvals

To download certificates, visit the product detail page: <https://www.phoenixcontact.com/us/products/3002782>

DNV Approval ID: TAE00002TT-04				
	Nominal voltage U_N	Nominal current I_N	Cross section AWG	Cross section mm^2
	500 V	24 A	-	-

CSA Approval ID: 13631				
	Nominal voltage U_N	Nominal current I_N	Cross section AWG	Cross section mm^2
Use group B				
	300 V	20 A	26 - 12	-
Use group C				
	150 V	20 A	26 - 12	-
Use group D				
	300 V	10 A	26 - 12	-

CB IECEE CB Scheme Approval ID: DE1-63083				
	Nominal voltage U_N	Nominal current I_N	Cross section AWG	Cross section mm^2
	450 V	17.5 A	-	- 1.5

EAC Approval ID: RU C-DE.BL08.B.00644				
--	--	--	--	--

LR Approval ID: LR2002627TA				
--------------------------------	--	--	--	--

BV Approval ID: 59146/A0 BV				
--------------------------------	--	--	--	--

VDE Zeichengenehmigung Approval ID: 40047798				
---	--	--	--	--

cULus Recognized Approval ID: E60425				
	Nominal voltage U_N	Nominal current I_N	Cross section AWG	Cross section mm^2
Use group B				

PTFIX 12X1,5 BK - Distribution block



3002782

<https://www.phoenixcontact.com/us/products/3002782>

	300 V	20 A	26 - 12	-
Use group C				
	150 V	20 A	26 - 12	-
Use group F				
	500 V	20 A	26 - 12	-
Use group D				
	300 V	10 A	26 - 12	-

PTFIX 12X1,5 BK - Distribution block



3002782

<https://www.phoenixcontact.com/us/products/3002782>

Classifications

ECLASS

ECLASS-11.0	27141120
ECLASS-13.0	27250118

ETIM

ETIM 8.0	EC000897
----------	----------

UNSPSC

UNSPSC 21.0	39121400
-------------	----------

PTFIX 12X1,5 BK - Distribution block



3002782

<https://www.phoenixcontact.com/us/products/3002782>

Environmental product compliance

China RoHS	Environmentally friendly use period: unlimited = EFUP-e
	No hazardous substances above threshold values

PTFIX 12X1,5 BK - Distribution block



3002782

<https://www.phoenixcontact.com/us/products/3002782>

Accessories



Note: Applying some accessories below might limit this product.

FBS 2-4 - Plug-in bridge

3030116

<https://www.phoenixcontact.com/us/products/3030116>



Plug-in bridge, pitch: 4.2 mm, number of positions: 2, color: red



Max. current carrying capacity: 17.5 A

FBS 2-4 GY - Plug-in bridge

3030118

<https://www.phoenixcontact.com/us/products/3030118>



Plug-in bridge, pitch: 4.2 mm, number of positions: 2, color: gray



Max. current carrying capacity: 17.5 A

PTFIX 12X1,5 BK - Distribution block

3002782

<https://www.phoenixcontact.com/us/products/3002782>



FBS 2-4 BU - Plug-in bridge

3030117

<https://www.phoenixcontact.com/us/products/3030117>



Plug-in bridge, pitch: 4.2 mm, number of positions: 2, color: blue

 Max. current carrying capacity: 17.5 A

PTFIX 1,5-F - Flange

1049503

<https://www.phoenixcontact.com/us/products/1049503>



Flange, with screw-on fixing, mounting type: Screw mounting, color: gray

PTFIX 12X1,5 BK - Distribution block

3002782

<https://www.phoenixcontact.com/us/products/3002782>

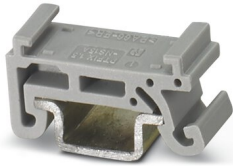


PTFIX 1,5-NS15A - DIN rail adapter

1049500

<https://www.phoenixcontact.com/us/products/1049500>

DIN rail adapter, length: 21.6 mm, width: 8 mm, height: 21.6 mm



PTFIX 1,5-NS35 - DIN rail adapter

1049497

<https://www.phoenixcontact.com/us/products/1049497>

DIN rail adapter, length: 58.1 mm, width: 21.6 mm, height: 58.1 mm



PTFIX 12X1,5 BK - Distribution block

3002782

<https://www.phoenixcontact.com/us/products/3002782>



PTFIX 1,5-NS35AD - DIN rail adapter

1049498

<https://www.phoenixcontact.com/us/products/1049498>

DIN rail adapter, for NS 35 for accommodating two rows of PTFIX 1,5 distribution blocks, length: 44.4 mm, width: 8 mm, height: 44.4 mm



PTFIX 1,5-RZF - Mounting adapter

1050613

<https://www.phoenixcontact.com/us/products/1050613>

Adapter for direct mounting



PTFIX 12X1,5 BK - Distribution block

3002782

<https://www.phoenixcontact.com/us/products/3002782>



MPS-MT 1-S4-B RD - Accessories

1982800

<https://www.phoenixcontact.com/us/products/1982800>

Test plug terminal block, Accessories



ISH 1,5/0,2 - Insulating sleeve

3206131

<https://www.phoenixcontact.com/us/products/3206131>

Insulating sleeve, color: white



PTFIX 12X1,5 BK - Distribution block

3002782

<https://www.phoenixcontact.com/us/products/3002782>



ISH 1,5/0,5 - Insulating sleeve

3031034

<https://www.phoenixcontact.com/us/products/3031034>

Insulating sleeve, color: gray



SK 3,8 REEL P4,15 WH CUS - Marker card

0825990

<https://www.phoenixcontact.com/us/products/0825990>



Marker card, can be ordered: by card, white, labeled according to customer specifications, mounting type: adhesive, for terminal block width: 4.15 mm, lettering field size: continuous x 3.8 mm

PTFIX 12X1,5 BK - Distribution block



3002782

<https://www.phoenixcontact.com/us/products/3002782>

TML (EX3,8)R - Marker strip

0801837

<https://www.phoenixcontact.com/us/products/0801837>



Marker strip, Roll, white, unlabeled, can be labeled with: THERMOMARK E.300 (D)/600 (D), THERMOMARK ROLL 2.0, THERMOMARK ROLL, THERMOMARK ROLL X1, THERMOMARK ROLLMASTER 300/600, THERMOMARK X1.2, mounting type: adhesive, lettering field size: 30000 x 3.8 mm, Number of individual labels: 12

TML (104X3,8)R - Marker strip

0801833

<https://www.phoenixcontact.com/us/products/0801833>



Marker strip, Roll, white, unlabeled, can be labeled with: THERMOMARK E.300 (D)/600 (D), THERMOMARK ROLL 2.0, THERMOMARK ROLL, THERMOMARK ROLL X1, THERMOMARK ROLLMASTER 300/600, THERMOMARK X1.2, mounting type: adhesive, for terminal block width: 104 mm, lettering field size: 104 x 3.8 mm, Number of individual labels: 2500

PTFIX 12X1,5 BK - Distribution block

3002782

<https://www.phoenixcontact.com/us/products/3002782>



TML (104X2,8)R - Marker strip

0801832

<https://www.phoenixcontact.com/us/products/0801832>



Marker strip, Roll, white, unlabeled, can be labeled with: THERMOMARK E.300 (D)/600 (D), THERMOMARK ROLL 2.0, THERMOMARK ROLL, THERMOMARK ROLL X1, THERMOMARK ROLLMASTER 300/600, THERMOMARK X1.2, mounting type: adhesive, for terminal block width: 104 mm, lettering field size: 104 x 2.8 mm, Number of individual labels: 2500

TML (EX2,8)R - Marker strip

0801836

<https://www.phoenixcontact.com/us/products/0801836>



Marker strip, Roll, white, unlabeled, can be labeled with: THERMOMARK E.300 (D)/600 (D), THERMOMARK ROLL 2.0, THERMOMARK ROLL, THERMOMARK ROLL X1, THERMOMARK ROLLMASTER 300/600, THERMOMARK X1.2, mounting type: adhesive, for terminal block width: 30000 mm, lettering field size: continuous x 2.8 mm

PTFIX 12X1,5 BK - Distribution block

3002782

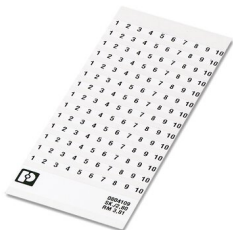
<https://www.phoenixcontact.com/us/products/3002782>



SK 2,8 REEL P4,15 WH CUS - Marker card

8199987

<https://www.phoenixcontact.com/us/products/8199987>



Marker card, can be ordered: by card, white, labeled according to customer specifications, mounting type: adhesive, for terminal block width: 4.15 mm, lettering field size: continuous x 2.8 mm

US-TML (104X3,8) - Marker for terminal blocks

0830768

<https://www.phoenixcontact.com/us/products/0830768>



Marker for terminal blocks, Card, white, unlabeled, can be labeled with: BLUEMARK ID COLOR, BLUEMARK ID, THERMOMARK PRIME, THERMOMARK CARD 2.0, THERMOMARK CARD, mounting type: adhesive, lettering field size: 104 x 3.8 mm, Number of individual labels: 22

PTFIX 12X1,5 BK - Distribution block

3002782

<https://www.phoenixcontact.com/us/products/3002782>



US-TML (104X2,8) - Marker for terminal blocks

0830767

<https://www.phoenixcontact.com/us/products/0830767>



Marker for terminal blocks, Card, white, unlabeled, can be labeled with: BLUEMARK ID COLOR, BLUEMARK ID, THERMOMARK PRIME, THERMOMARK CARD 2.0, THERMOMARK CARD, mounting type: adhesive, lettering field size: 104 x 2.8 mm, Number of individual labels: 26

SK U/3,8 WH:UNBEDRUCKT - Marker card

0803906

<https://www.phoenixcontact.com/us/products/0803906>



Marker card, Din A4, white, unlabeled, can be labeled with: PLOTMARK, CMS-P1-PLOTTER, Office printing systems, mounting type: adhesive, for terminal block width: 210 mm, lettering field size: 186 x 3.8 mm, Number of individual labels: 1440

PTFIX 12X1,5 BK - Distribution block

3002782

<https://www.phoenixcontact.com/us/products/3002782>



SK U/2,8 WH:UNBEDRUCKT - Marker card

0803883

<https://www.phoenixcontact.com/us/products/0803883>

Marker card, Din A4, white, unlabeled, can be labeled with: PLOTMARK, CMS-P1-PLOTTER, Office printing systems, mounting type: adhesive, for terminal block width: 210 mm, lettering field size: 186 x 2.8 mm, Number of individual labels: 3600



MM-TML (EX3,8)R C1 WH/BK - Label

1092026

<https://www.phoenixcontact.com/us/products/1092026>

Label, Roll, white/black, unlabeled, can be labeled with: THERMOFOX, THERMOMARK GO, THERMOMARK GO.K, mounting type: adhesive, lettering field size: continuous x 2.8 mm



Phoenix Contact 2023 © - all rights reserved
<https://www.phoenixcontact.com>

Phoenix Contact USA
586 Fulling Mill Road
Middletown, PA 17057, United States
(+717) 944-1300
info@phoenixcon.com