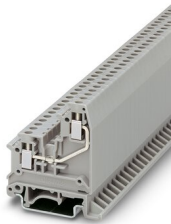


3002513
<https://www.phoenixcontact.com/us/products/3002513>

Please be informed that the data shown in this PDF document is generated from our online catalog. Please find the complete data in the user documentation. Our general terms of use for downloads are valid.



Universal terminal block with screw connection, cross section: 0,2- 2.5 mm², AWG: 24- 12, width: 5.2 mm, color: Gray

Commercial data

Item number	3002513
Packing unit	1 pc
Minimum order quantity	1 pc
Note	Made to order (non-returnable)
Sales key	BE12
Product key	BE1211
Catalog page	Page 226 (CL-2005)
GTIN	4017918090289
Weight per piece (including packing)	9.214 g
Weight per piece (excluding packing)	9.214 g
Customs tariff number	85369010
Country of origin	PL

UK 3-RETURN - Feed-through terminal block



3002513

<https://www.phoenixcontact.com/us/products/3002513>

Technical data

Product properties

Product type	Feed-through terminal block
Number of connections	2
Number of rows	2
Potentials	1

Insulation characteristics

Overvoltage category	III
Degree of pollution	3

Electrical properties

Rated surge voltage	6 kV
---------------------	------

Connection data

Number of connections per level	2
Nominal cross section	2.5 mm ²
Rated cross section AWG	12

Level 1 above 1 below 1

Screw thread	M3
Tightening torque	0.6 ... 0.8 Nm
Stripping length	8 mm
Connection in acc. with standard	IEC / EN
Conductor cross section rigid	0.2 mm ² ... 4 mm ²
Cross section AWG	24 ... 12 (converted acc. to IEC)
Conductor cross section flexible	0.2 mm ² ... 2.5 mm ²
Conductor cross section, flexible [AWG]	24 ... 14 (converted acc. to IEC)
Flexible conductor cross section (ferrule with plastic sleeve)	0.25 mm ² ... 1.5 mm ²
Cross-section with insertion bridge, rigid	4 mm ²
Cross-section with insertion bridge, flexible	2.5 mm ²
2 conductors with same cross section, solid	0.2 mm ² ... 1 mm ²
2 conductors with same cross section, flexible	0.2 mm ² ... 1 mm ²
2 conductors with same cross section, flexible, with ferrule without plastic sleeve	0.25 mm ² ... 1 mm ²
2 conductors with the same cross section, flexible, with TWIN ferrule with plastic sleeve	0.5 mm ² ... 1 mm ²
Nominal current	32 A
Maximum load current	32 A (with 4 mm ² conductor cross section)
Nominal voltage	500 V
Connection in acc. with standard	UL
Cross section AWG	30 ... 12 (converted acc. to IEC)
Nominal current	20 A
Nominal voltage	300 V

UK 3-RETURN - Feed-through terminal block



3002513

<https://www.phoenixcontact.com/us/products/3002513>

Connection in acc. with standard	CSA
Nominal current	25 A
Nominal voltage	300 V

Dimensions

Width	5.2 mm
-------	--------

Material specifications

Color	gray
Flammability rating according to UL 94	V2
Insulating material group	I
Insulating material	PA
Temperature index of insulation material (DIN EN 60216-1 (VDE 0304-21))	125 °C
Relative insulation material temperature index (Elec., UL 746 B)	125 °C

Electrical tests

Surge voltage test

Test voltage setpoint	7.3 kV
Result	Test passed

Temperature-rise test

Requirement temperature-rise test	Increase in temperature ≤ 45 K
Result	Test passed
Short-time withstand current 2.5 mm ²	0.3 kA
Short-time withstand current 4 mm ²	0.48 kA
Result	Test passed

Power-frequency withstand voltage

Result	Test passed
--------	-------------

Mechanical properties

Mechanical data

Open side panel	Yes
-----------------	-----

Mechanical tests

Mechanical strength

Result	Test passed
--------	-------------

Attachment on the carrier

DIN rail/fixing support	NS 32/NS 35
Test force setpoint	1 N
Result	Test passed

Test for conductor damage and slackening

UK 3-RETURN - Feed-through terminal block



3002513

<https://www.phoenixcontact.com/us/products/3002513>

Rotation speed	10 rpm
Revolutions	135
Conductor cross section/weight	0.2 mm ² / 0.2 kg
	2.5 mm ² / 0.7 kg
	4 mm ² / 0.9 kg
Result	Test passed

Environmental and real-life conditions

Needle-flame test

Time of exposure	30 s
Result	Test passed

Standards and regulations

Connection in acc. with standard	IEC / EN
	UL
	CSA

Mounting

Mounting type	NS 35/7,5
	NS 35/15
	NS 32

UK 3-RETURN - Feed-through terminal block

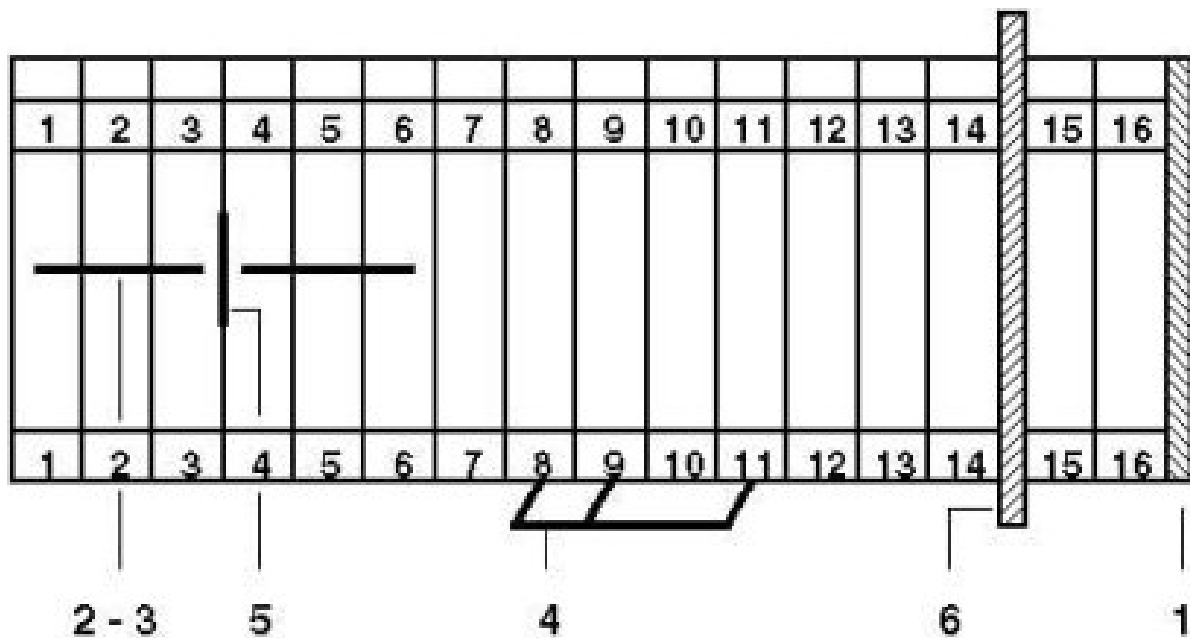


3002513

<https://www.phoenixcontact.com/us/products/3002513>

Drawings

Circuit diagram



UK 3-RETURN - Feed-through terminal block



3002513

<https://www.phoenixcontact.com/us/products/3002513>

Classifications

ETIM

ETIM 7.0	EC000897
----------	----------

UNSPSC

UNSPSC 21.0	39121410
-------------	----------

UK 3-RETURN - Feed-through terminal block



3002513

<https://www.phoenixcontact.com/us/products/3002513>

Environmental product compliance

REACH SVHC	Lead 7439-92-1
China RoHS	Environmentally Friendly Use Period = 50 years
	For information on hazardous substances, refer to the manufacturer's declaration available under "Downloads"

UK 3-RETURN - Feed-through terminal block

3002513

<https://www.phoenixcontact.com/us/products/3002513>



Accessories



Note: Applying some accessories below might limit this product.

FBRN 10-5-EX - Fixed bridge

3000612

<https://www.phoenixcontact.com/us/products/3000612>



Fixed bridge, pitch: 5 mm, number of positions: 10, color: silver

FBRNI 20-5 N - Fixed bridge

3000609

<https://www.phoenixcontact.com/us/products/3000609>



Fixed bridge, number of positions: 20, color: silver

UK 3-RETURN - Feed-through terminal block



3002513

<https://www.phoenixcontact.com/us/products/3002513>


FBRNI 2-5 N - Fixed bridge

3000175

<https://www.phoenixcontact.com/us/products/3000175>



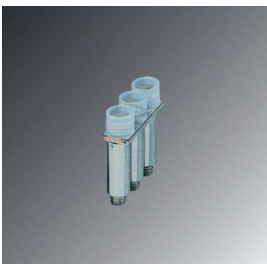
Fixed bridge, pitch: 5 mm, number of positions: 2, color: silver

 Max. current carrying capacity: 32 A


FBRNI 3-5 N - Fixed bridge

3000162

<https://www.phoenixcontact.com/us/products/3000162>



Fixed bridge, pitch: 5 mm, number of positions: 3, color: silver

 Max. current carrying capacity: 32 A

UK 3-RETURN - Feed-through terminal block

3002513

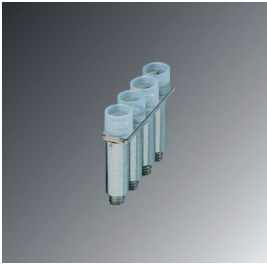
<https://www.phoenixcontact.com/us/products/3002513>




FBRNI 4-5 N - Fixed bridge

3000159

<https://www.phoenixcontact.com/us/products/3000159>



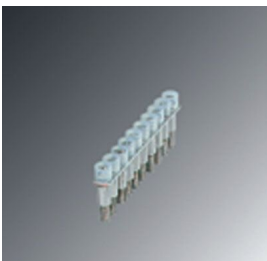
Fixed bridge, pitch: 5 mm, number of positions: 4, color: silver

 Max. current carrying capacity: 32 A

FBRNI 10-5 N - Fixed bridge

2770639

<https://www.phoenixcontact.com/us/products/2770639>



Fixed bridge, pitch: 5.2 mm, number of positions: 10, color: silver

 Max. current carrying capacity: 32 A

UK 3-RETURN - Feed-through terminal block



3002513

<https://www.phoenixcontact.com/us/products/3002513>

EB 10- 5 - Insertion bridge

1401132

<https://www.phoenixcontact.com/us/products/1401132>

Insertion bridge, pitch: 5.2 mm, number of positions: 10, color: gray



 Max. current carrying capacity: 24 A

EB 2- 5 - Insertion bridge

1401158

<https://www.phoenixcontact.com/us/products/1401158>

Insertion bridge, pitch: 5 mm, number of positions: 2, color: gray



 Max. current carrying capacity: 24 A

UK 3-RETURN - Feed-through terminal block

3002513

<https://www.phoenixcontact.com/us/products/3002513>



EB 3- 5 - Insertion bridge

1401145

<https://www.phoenixcontact.com/us/products/1401145>

Insertion bridge, pitch: 5 mm, number of positions: 3, color: gray



 Max. current carrying capacity: 24 A

D-UK 3-RETURN - End cover

3002539

<https://www.phoenixcontact.com/us/products/3002539>

End cover, length: 47.5 mm, width: 1.5 mm, height: 58.5 mm, color: gray



UK 3-RETURN - Feed-through terminal block

3002513

<https://www.phoenixcontact.com/us/products/3002513>



KSS 5 - Short-circuit connector

2303543

<https://www.phoenixcontact.com/us/products/2303543>



Short-circuit connector, pitch: 5 mm, number of positions: 2, color: black

RPS - Reducing plug

0201647

<https://www.phoenixcontact.com/us/products/0201647>



Reducing plug, number of positions: 1, color: gray

UK 3-RETURN - Feed-through terminal block

3002513

<https://www.phoenixcontact.com/us/products/3002513>



TS-UK 3-RETURN - Separating plate

3002526

<https://www.phoenixcontact.com/us/products/3002526>



Separating plate, width: 0.5 mm, color: gray

ATP-UK 3-RETURN - Partition plate

3002542

<https://www.phoenixcontact.com/us/products/3002542>



Partition plate, length: 49.1 mm, width: 1.5 mm, height: 69.5 mm, color: gray

UK 3-RETURN - Feed-through terminal block

3002513

<https://www.phoenixcontact.com/us/products/3002513>



SBS 5:UNBEDRUCKT - Marker card

1007219

<https://www.phoenixcontact.com/us/products/1007219>



Marker card, Card, white, unlabeled, can be labeled with: Marker pen, perforated, mounting type: snap into tall marker groove, snap into flat marker groove, for terminal block width: 5 mm, lettering field size: 6 x 5.1 mm, Number of individual labels: 250

NS 32 PERF 2000MM-VPE 10 - DIN rail perforated

1201002

<https://www.phoenixcontact.com/us/products/1201002>



DIN rail perforated, acc. to EN 60715, material: Steel, galvanized, passivated with a thick layer, G profile, color: silver, Pack of 10 (20 m)

UK 3-RETURN - Feed-through terminal block

3002513

<https://www.phoenixcontact.com/us/products/3002513>



NS 32 UNPERF 2000MM-VPE 10 - DIN rail, unperforated

1201015

<https://www.phoenixcontact.com/us/products/1201015>



DIN rail, unperforated, acc. to EN 60715, material: Steel, galvanized, passivated with a thick layer, G profile, color: silver, Pack of 10 (20 m)

NS 35/ 7,5 PERF 2000MM - DIN rail perforated

0801733

<https://www.phoenixcontact.com/us/products/0801733>



DIN rail perforated, acc. to EN 60715, material: Steel, galvanized, passivated with a thick layer, Standard profile, color: silver, Pack of 25 (50 m)

UK 3-RETURN - Feed-through terminal block



3002513

<https://www.phoenixcontact.com/us/products/3002513>

NS 35/ 7,5 UNPERF 2000MM - DIN rail, unperforated

0801681

<https://www.phoenixcontact.com/us/products/0801681>



DIN rail, unperforated, acc. to EN 60715, material: Steel, galvanized, passivated with a thick layer, Standard profile, color: silver, Pack of 25 (50 m)

NS 35/ 7,5 WH PERF 2000MM - DIN rail perforated

1204119

<https://www.phoenixcontact.com/us/products/1204119>



DIN rail perforated, acc. to EN 60715, material: Steel, Galvanized, white passivated, Standard profile, color: silver, Pack of 25 (50 m)

UK 3-RETURN - Feed-through terminal block

3002513

<https://www.phoenixcontact.com/us/products/3002513>



NS 35/ 7,5 WH UNPERF 2000MM-VPE 10 - DIN rail, unperforated

1204122

<https://www.phoenixcontact.com/us/products/1204122>



DIN rail, unperforated, acc. to EN 60715, material: Steel, Galvanized, white passivated, Standard profile, color: silver, Pack of 10 (20 m)

NS 35/ 7,5 AL UNPERF 2000MM - DIN rail, unperforated

0801704

<https://www.phoenixcontact.com/us/products/0801704>



DIN rail, unperforated, acc. to EN 60715, material: Aluminum, uncoated, Standard profile, color: silver, Pack of 25 (50 m)

UK 3-RETURN - Feed-through terminal block

3002513

<https://www.phoenixcontact.com/us/products/3002513>



NS 35/ 7,5 ZN PERF 2000MM - DIN rail perforated

1206421

<https://www.phoenixcontact.com/us/products/1206421>



DIN rail perforated, acc. to EN 60715, material: Steel, galvanized, Standard profile, color: silver, Pack of 25 (50 m)

NS 35/ 7,5 ZN UNPERF 2000MM - DIN rail, unperforated

1206434

<https://www.phoenixcontact.com/us/products/1206434>



DIN rail, unperforated, acc. to EN 60715, material: Steel, galvanized, Standard profile, color: silver, Pack of 25 (50 m)

UK 3-RETURN - Feed-through terminal block

3002513

<https://www.phoenixcontact.com/us/products/3002513>



NS 35/ 7,5 CU UNPERF 2000MM-VPE 10 - DIN rail, unperforated

0801762

<https://www.phoenixcontact.com/us/products/0801762>



DIN rail, unperforated, acc. to EN 60715, material: Copper, uncoated, Standard profile, color: copper-colored, Pack of 10 (20 m)

NS 35/ 7,5 CAP - End cap

1206560

<https://www.phoenixcontact.com/us/products/1206560>

DIN rail end piece, for DIN rail NS 35/7.5



UK 3-RETURN - Feed-through terminal block



3002513

<https://www.phoenixcontact.com/us/products/3002513>

NS 35/15 PERF 2000MM - DIN rail perforated

1201730

<https://www.phoenixcontact.com/us/products/1201730>



DIN rail perforated, similar to EN 60715, material: Steel, galvanized, passivated with a thick layer, Standard profile, color: silver, Pack of 25 (50 m)

NS 35/15 UNPERF 2000MM - DIN rail, unperforated

1201714

<https://www.phoenixcontact.com/us/products/1201714>



DIN rail, unperforated, similar to EN 60715, material: Steel, galvanized, passivated with a thick layer, Standard profile, color: silver, Pack of 25 (50 m)

UK 3-RETURN - Feed-through terminal block



3002513

<https://www.phoenixcontact.com/us/products/3002513>

NS 35/15 WH PERF 2000MM - DIN rail perforated

0806602

<https://www.phoenixcontact.com/us/products/0806602>



DIN rail perforated, similar to EN 60715, material: Steel, Galvanized, white passivated, Standard profile, color: white, Pack of 25 (50 m)

NS 35/15 WH UNPERF 2000MM-VPE 10 - DIN rail, unperforated

1204135

<https://www.phoenixcontact.com/us/products/1204135>



DIN rail, unperforated, similar to EN 60715, material: Steel, Galvanized, white passivated, Standard profile, color: silver, Pack of 10 (20 m)

UK 3-RETURN - Feed-through terminal block

3002513

<https://www.phoenixcontact.com/us/products/3002513>



NS 35/15 AL UNPERF 2000MM - DIN rail, unperforated

1201756

<https://www.phoenixcontact.com/us/products/1201756>



DIN rail, unperforated, similar to EN 60715, material: Aluminum, uncoated, Standard profile, color: silver

NS 35/15 ZN PERF 2000MM - DIN rail perforated

1206599

<https://www.phoenixcontact.com/us/products/1206599>



DIN rail perforated, similar to EN 60715, material: Steel, galvanized, Standard profile, color: silver, Pack of 25 (50 m)

UK 3-RETURN - Feed-through terminal block

3002513

<https://www.phoenixcontact.com/us/products/3002513>



NS 35/15 ZN UNPERF 2000MM - DIN rail, unperforated

1206586

<https://www.phoenixcontact.com/us/products/1206586>



DIN rail, unperforated, similar to EN 60715, material: Steel, galvanized, Standard profile, color: silver, Pack of 25 (50 m)

NS 35/15 CU UNPERF 2000MM-VPE 10 - DIN rail, unperforated

1201895

<https://www.phoenixcontact.com/us/products/1201895>



DIN rail, unperforated, similar to EN 60715, material: Copper, uncoated, Standard profile, color: copper-colored, Pack of 10 (20 m)

UK 3-RETURN - Feed-through terminal block

3002513

<https://www.phoenixcontact.com/us/products/3002513>



NS 35/15 CAP - End cap

1206573

<https://www.phoenixcontact.com/us/products/1206573>

DIN rail end piece, for DIN rail NS 35/15



NS 35/15-2,3 UNPERF 2000MM-VPE 10 - DIN rail, unperforated

1201798

<https://www.phoenixcontact.com/us/products/1201798>



DIN rail, unperforated, acc. to EN 60715, material: Steel, galvanized, passivated with a thick layer, Standard profile 2.3 mm, color: silver, Pack of 10 (20 m)

UK 3-RETURN - Feed-through terminal block



3002513

<https://www.phoenixcontact.com/us/products/3002513>

ZB 5 :UNBEDRUCKT - Zack marker strip

1050004

<https://www.phoenixcontact.com/us/products/1050004>

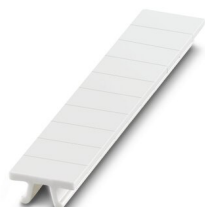


Zack marker strip, Strip, white, unlabeled, can be labeled with: PLOTMARK, CMS-P1-PLOTTER, mounting type: snapped, for terminal block width: 5.2 mm, lettering field size: 5.1 x 10.5 mm, Number of individual labels: 10

ZB 5 CUS - Zack marker strip

0824962

<https://www.phoenixcontact.com/us/products/0824962>



Zack marker strip, can be ordered: Strip, white, labeled according to customer specifications, mounting type: snap into tall marker groove, for terminal block width: 5.2 mm, lettering field size: 5.15 x 10.5 mm, Number of individual labels: 10

UK 3-RETURN - Feed-through terminal block



3002513

<https://www.phoenixcontact.com/us/products/3002513>

ZB 5,LGS:FORTL.ZAHLEN - Zack marker strip

1050017

<https://www.phoenixcontact.com/us/products/1050017>



Zack marker strip, Strip, white, labeled, printed horizontally: consecutive numbers 1 ... 10, 11 ... 20, etc. up to 491 ... 500, mounting type: snapped, for terminal block width: 5.2 mm, lettering field size: 5.15 x 10.5 mm, Number of individual labels: 10

ZB 5,QR:FORTL.ZAHLEN - Zack marker strip

1050020

<https://www.phoenixcontact.com/us/products/1050020>



Zack marker strip, white, Printed vertically: consecutive numbers 1 ... 10, 11 ... 20, etc. up to 491 ... 500, mounting type: snapped, for terminal block width: 5.2 mm, lettering field size: 5.15 x 10.5 mm

UK 3-RETURN - Feed-through terminal block



3002513

<https://www.phoenixcontact.com/us/products/3002513>

ZB 5,LGS:GLEICHE ZAHLEN - Zack marker strip

1050033

<https://www.phoenixcontact.com/us/products/1050033>



Zack marker strip, Strip, white, labeled, can be labeled with: CMS-P1-PLOTTER, printed horizontally: Identical numbers 1 or 2, etc. up to 100, mounting type: snapped, for terminal block width: 5.2 mm, lettering field size: 5.15 x 10.5 mm, Number of individual labels: 10

ZB 5,LGS:L1-N,PE - Zack marker strip

1050415

<https://www.phoenixcontact.com/us/products/1050415>



Zack marker strip, Strip, white, labeled, horizontal: L1, L2, L3, N, PE, L1, L2, L3, N, PE, mounting type: snapped, for terminal block width: 5.2 mm, lettering field size: 5.15 x 10.5 mm, Number of individual labels: 10

UK 3-RETURN - Feed-through terminal block



3002513

<https://www.phoenixcontact.com/us/products/3002513>

UC-TM 5 - Marker for terminal blocks

0818108

<https://www.phoenixcontact.com/us/products/0818108>



Marker for terminal blocks, Sheet, white, unlabeled, can be labeled with: BLUEMARK ID COLOR, BLUEMARK ID, BLUEMARK CLED, PLOTMARK, CMS-P1-PLOTTER, mounting type: snapped, for terminal block width: 5.2 mm, lettering field size: 4.6 x 10.5 mm, Number of individual labels: 96

UC-TM 5 CUS - Marker for terminal blocks

0824581

<https://www.phoenixcontact.com/us/products/0824581>



Marker for terminal blocks, can be ordered: by sheet, white, labeled according to customer specifications, mounting type: snap into tall marker groove, for terminal block width: 5.2 mm, lettering field size: 10.5 x 4.6 mm, Number of individual labels: 96

UK 3-RETURN - Feed-through terminal block



3002513

<https://www.phoenixcontact.com/us/products/3002513>

UCT-TM 5 - Marker for terminal blocks

0828734

<https://www.phoenixcontact.com/us/products/0828734>



Marker for terminal blocks, Sheet, white, unlabeled, can be labeled with: TOPMARK NEO, TOPMARK LASER, BLUEMARK ID COLOR, BLUEMARK ID, BLUEMARK CLED, THERMOMARK PRIME, THERMOMARK CARD 2.0, THERMOMARK CARD, mounting type: snapped, for terminal block width: 5.2 mm, lettering field size: 4.6 x 10.5 mm, Number of individual labels: 72

UCT-TM 5 CUS - Marker for terminal blocks

0829595

<https://www.phoenixcontact.com/us/products/0829595>



Marker for terminal blocks, can be ordered: by sheet, white, labeled according to customer specifications, mounting type: snap into tall marker groove, for terminal block width: 5.2 mm, lettering field size: 4.6 x 10.5 mm, Number of individual labels: 72

UK 3-RETURN - Feed-through terminal block



3002513

<https://www.phoenixcontact.com/us/products/3002513>

GBS 5-25X12 - Group marker label for terminal marking

0810588

<https://www.phoenixcontact.com/us/products/0810588>



Group marker label, snaps onto terminal center for screw, spring-cage and quick connection terminal blocks, labeled with a 25 x 12 mm label or manually with the B-STIFT, in the foot part with ZB 5

GBS 5-25X5 - Group marker label for terminal marking

0829126

<https://www.phoenixcontact.com/us/products/0829126>



Group marking label, can be snapped into terminal center for screw, spring-cage, push-in, and fast connection terminal blocks, can be labeled with a 24 x 4 mm label or manually using B-STIFT, in the foot part with ZB 5

UK 3-RETURN - Feed-through terminal block



3002513

<https://www.phoenixcontact.com/us/products/3002513>

STP 5-2-ZB - Marker carriers

3037643

<https://www.phoenixcontact.com/us/products/3037643>



Marker carriers, snaps into ST 2,5 spring-cage terminal blocks, can be marked with UC-TM 5, UC-TMF 5, UCT-TM 5, UCT-TMF 5, ZB 5, or ZBF 5, gray, unlabeled, mounting type: snapped

CLIPFIX 35 - End clamp

3022218

<https://www.phoenixcontact.com/us/products/3022218>



Quick mounting end clamp for NS 35/7,5 DIN rail or NS 35/15 DIN rail, with marking option, width: 9.5 mm, color: gray

UK 3-RETURN - Feed-through terminal block

3002513

<https://www.phoenixcontact.com/us/products/3002513>



CLIPFIX 35-5 - End clamp

3022276

<https://www.phoenixcontact.com/us/products/3022276>

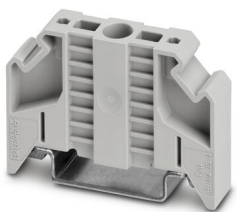


Quick mounting end clamp for NS 35/7,5 DIN rail or NS 35/15 DIN rail, with marking option, with parking option for FBS...5, FBS...6, KSS 5, KSS 6, width: 5.15 mm, color: gray

E/NS 35 N - End clamp

0800886

<https://www.phoenixcontact.com/us/products/0800886>



End clamp, width: 9.5 mm, color: gray

UK 3-RETURN - Feed-through terminal block

3002513

<https://www.phoenixcontact.com/us/products/3002513>



PSBJ 3/13/4 - Female test connector

0201304

<https://www.phoenixcontact.com/us/products/0201304>

Female test connector, number of positions: 1, color: silver



PSB 3/10/4 - Female test connector

0601292

<https://www.phoenixcontact.com/us/products/0601292>

Female test connector, number of positions: 1, color: silver



UK 3-RETURN - Feed-through terminal block

3002513

<https://www.phoenixcontact.com/us/products/3002513>



E/UK - End clamp

1201442

<https://www.phoenixcontact.com/us/products/1201442>

End clamp, material: PA, color: gray, Mounting on a DIN rail NS 32 or NS 35



E/UK 1 - End clamp

1201413

<https://www.phoenixcontact.com/us/products/1201413>

End clamps, for supporting the ends of double-level and three-level terminal blocks, width: 10 mm, color: gray



Phoenix Contact 2023 © - all rights reserved
<https://www.phoenixcontact.com>

Phoenix Contact USA
586 Fulling Mill Road
Middletown, PA 17057, United States
(+717) 944-1300
info@phoenixcon.com