

KEL 24/10 - Sealing frame

3063086

<https://www.phoenixcontact.com/us/products/3063086>



Please be informed that the data shown in this PDF document is generated from our online catalog. Please find the complete data in the user documentation. Our general terms of use for downloads are valid.



Sealing frame, material: PA, color: black, length: 147 mm, width: 58 mm, height: 17 mm

Product description

KEL sealing sleeves, large

Commercial data

Item number	3063086
Packing unit	1 pc
Minimum order quantity	1 pc
Note	Made to order (non-returnable)
Sales key	NULL
Product key	BF7CAX
Catalog page	Page 685 (CL-2009)
GTIN	4046356300810
Weight per piece (including packing)	120.115 g
Weight per piece (excluding packing)	100 g
Customs tariff number	39174000
Country of origin	DE

KEL 24/10 - Sealing frame

3063086

<https://www.phoenixcontact.com/us/products/3063086>

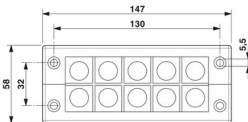


Technical data

Product properties

Product type	Frame for cable sleeves
--------------	-------------------------

Dimensions

Dimensional drawing	
Width	58 mm
Height	17 mm
Length	147 mm
Drill hole distance, horizontal	32 mm
Drill hole distance, vertical	130 mm
Hole diameter	5.5 mm

Installation dimensions

Width of the assembly cutout	35 mm
Length of the assembly cutout	112 mm

Material specifications

Material	PA
Flammability rating according to UL 94	V0

Environmental and real-life conditions

Ambient conditions

Ambient temperature (operation)	-20 °C ... 80 °C
---------------------------------	------------------

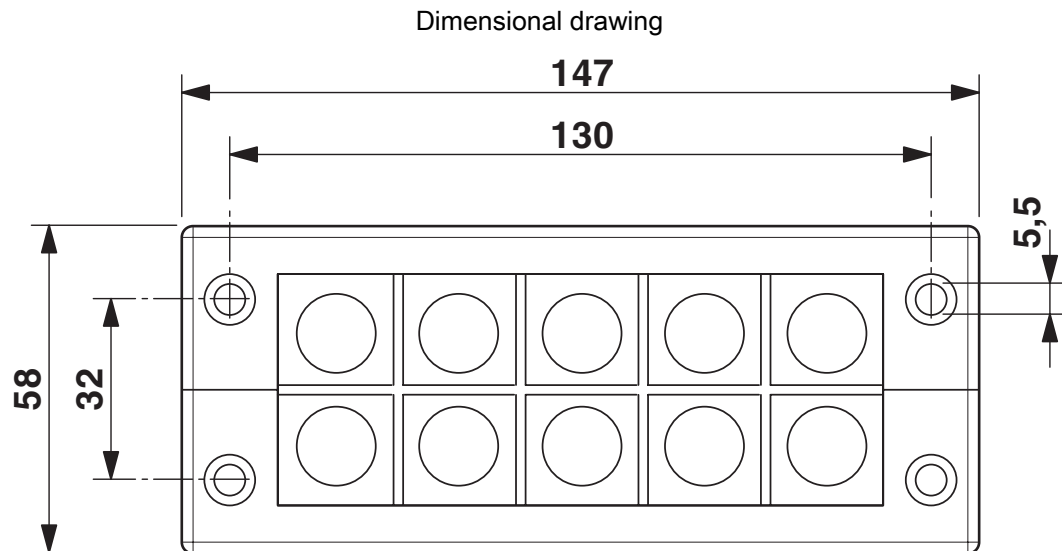
KEL 24/10 - Sealing frame

3063086

<https://www.phoenixcontact.com/us/products/3063086>



Drawings



KEL 24/10 - Sealing frame

3063086

<https://www.phoenixcontact.com/us/products/3063086>



Classifications

ECLASS

ECLASS-11.0	27142421
ECLASS-13.0	27142421

Phoenix Contact 2023 © - all rights reserved

<https://www.phoenixcontact.com>

Phoenix Contact USA
586 Fulling Mill Road
Middletown, PA 17057, United States
(+717) 944-1300
info@phoenixcon.com