

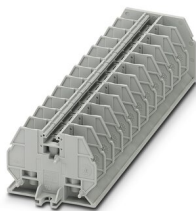
RBO 5-F/12 - Bolt connection terminal block



3059252

<https://www.phoenixcontact.com/us/products/3059252>

Please be informed that the data shown in this PDF document is generated from our online catalog. Please find the complete data in the user documentation. Our general terms of use for downloads are valid.



Feed-through terminal block with bolt connection method, cross section: 0.1 - 6 mm², AWG: 26 - 10, width 13 mm, color: gray

Your advantages

- Direct mounting in control boxes
- Compact connection with ring and fork-type cable lugs
- Bridge shaft for potential distribution using standard screw bridges
- Isolator bridge bar for switchable cross connections

Commercial data

Item number	3059252
Packing unit	1 pc
Minimum order quantity	1 pc
Sales key	BE44
Product key	BE4415
Catalog page	Page 387 (C-1-2019)
GTIN	4046356534871
Weight per piece (including packing)	255.8 g
Weight per piece (excluding packing)	255.8 g
Customs tariff number	85369010
Country of origin	IN

RBO 5-F/12 - Bolt connection terminal block



3059252

<https://www.phoenixcontact.com/us/products/3059252>

Technical data

Product properties

Product type	Bolt connection terminal block
Pitch	13 mm
Number of connections	24
Number of rows	1
Potentials	12

Insulation characteristics

Overvoltage category	III
Degree of pollution	3

Electrical properties

Rated surge voltage	8 kV
Maximum power dissipation for nominal condition	1.82 W

Connection data

Number of connections per level	24
Nominal cross section	10 mm ²

1 level

Stripping length	The stripping length depends on the specification provided by the cable lug manufacturer.
Connection in acc. with standard	IEC 60947-7-1
Nominal current	57 A
Maximum load current	57 A (with 10 mm ² conductor cross section)
Nominal voltage	800 V
Nominal cross section	10 mm ²

Cable lug connection DIN 46234:1980-03

Connection in acc. with standard	DIN 46234:1980-03
Cross section	0.1 mm ² ... 10 mm ²
Cross section range AWG	26 ... 8 (converted acc. to IEC)
Hole diameter	5.3 mm
Width	10 mm
Bolt diameter	5 mm
Screw thread	M5
Tightening torque	2 ... 2.2 Nm
Connection in acc. with standard	DIN 46237:1970-07
Cross section	0.5 mm ² ... 6 mm ²
Cross section range AWG	20 ... 10 (converted acc. to IEC)
Hole diameter	5.3 mm
Width	10 mm
Bolt diameter	5 mm

RBO 5-F/12 - Bolt connection terminal block



3059252

<https://www.phoenixcontact.com/us/products/3059252>

Tightening torque	2 ... 2.2 Nm
Identification color of ring cable lugs : red	1 mm ²
Identification color of ring cable lugs : blue	2.5 mm ²
Identification color of ring cable lugs : yellow	6 mm ²

Dimensions

Width	173.7 mm
Height	53.3 mm
Depth	37 mm
Hole diameter	5.2 mm
Pitch	13 mm

Material specifications

Color	gray
Flammability rating according to UL 94	V0
Insulating material group	I
Insulating material	PA
Static insulating material application in cold	-60 °C
Temperature index of insulation material (DIN EN 60216-1 (VDE 0304-21))	130 °C
Relative insulation material temperature index (Elec., UL 746 B)	130 °C
Fire protection for rail vehicles (DIN EN 45545-2) R22	HL 1 - HL 3
Fire protection for rail vehicles (DIN EN 45545-2) R23	HL 1 - HL 3
Fire protection for rail vehicles (DIN EN 45545-2) R24	HL 1 - HL 3
Fire protection for rail vehicles (DIN EN 45545-2) R26	HL 1 - HL 3
Calorimetric heat release NFPA 130 (ASTM E 1354)	28 MJ/kg
Surface flammability NFPA 130 (ASTM E 162)	passed
Specific optical density of smoke NFPA 130 (ASTM E 662)	passed
Smoke gas toxicity NFPA 130 (SMP 800C)	passed

Mechanical properties

Mechanical data

Open side panel	No
-----------------	----

Environmental and real-life conditions

Ambient conditions

Ambient temperature (storage/transport)	-25 °C ... 60 °C (for a short time, not exceeding 24 h, -60 °C to +70 °C)
Ambient temperature (assembly)	-5 °C ... 70 °C
Ambient temperature (actuation)	-5 °C ... 70 °C
Permissible humidity (storage/transport)	30 % ... 70 %

Standards and regulations

Connection in acc. with standard	IEC 60947-7-1
----------------------------------	---------------

RBO 5-F/12 - Bolt connection terminal block



3059252

<https://www.phoenixcontact.com/us/products/3059252>

Mounting

Mounting type	direct screw connection
---------------	-------------------------

RBO 5-F/12 - Bolt connection terminal block





3059252

<https://www.phoenixcontact.com/us/products/3059252>

Approvals

To download certificates, visit the product detail page: <https://www.phoenixcontact.com/us/products/3059252>

 UL Recognized Approval ID: FILE E 60425				
	Nominal voltage U_N	Nominal current I_N	Cross section AWG	Cross section mm^2
Use group B	600 V	45 A	-	-
Use group C	600 V	45 A	-	-

 EAC Approval ID: RU C-DE.AI30.B.01102	
---	--

 EAC Approval ID: RU C-DE.BL08.B.00540	
---	--

RBO 5-F/12 - Bolt connection terminal block



3059252

<https://www.phoenixcontact.com/us/products/3059252>

Classifications

ECLASS

ECLASS-11.0	27141120
ECLASS-13.0	27250101

ETIM

ETIM 8.0	EC000897
----------	----------

UNSPSC

UNSPSC 21.0	39121400
-------------	----------

RBO 5-F/12 - Bolt connection terminal block



3059252

<https://www.phoenixcontact.com/us/products/3059252>

Environmental product compliance

China RoHS	Environmentally friendly use period: unlimited = EFUP-e
	No hazardous substances above threshold values

Phoenix Contact 2023 © - all rights reserved
<https://www.phoenixcontact.com>

Phoenix Contact USA
586 Fulling Mill Road
Middletown, PA 17057, United States
(+717) 944-1300
info@phoenixcon.com