

UK 10,3-HESI N - Fuse modular terminal block



3048386

<https://www.phoenixcontact.com/us/products/3048386>

Please be informed that the data shown in this PDF document is generated from our online catalog. Please find the complete data in the user documentation. Our general terms of use for downloads are valid.



Fuse modular terminal block, fuse type: Ceramic, fuse type: 10:3 x 38 mm, nom. voltage: 690 V AC, nominal current: 32 A, connection method: Screw connection, Rated cross section: 16 mm², cross section: 1.5 mm²- 25 mm², mounting type: NS 35/7,5, NS 35/15, color: black

Your advantages

- Fuse holder for fuses up to 690 V AC
- For 10 x 38 fuse-links in accordance with IEC 60269-2
- Easy to bridge

Commercial data

Item number	3048386
Packing unit	1 pc
Minimum order quantity	10 pc
Sales key	BE12
Product key	BE1234
Catalog page	Page 462 (C-1-2017)
GTIN	4017918976293
Weight per piece (including packing)	50.41 g
Weight per piece (excluding packing)	49.59 g
Customs tariff number	85369095
Country of origin	DE

UK 10,3-HESI N - Fuse modular terminal block



3048386

<https://www.phoenixcontact.com/us/products/3048386>

Technical data

Product properties

Product type	Fuse terminal block
Number of connections	2
Number of rows	1

Insulation characteristics

Overvoltage category	III
Degree of pollution	3

Electrical properties

Fuse type	Ceramic
Rated surge voltage	6 kV
Maximum power dissipation for nominal condition	2.43 W
Fuse	10:3 x 38 mm

Connection data

Number of connections per level	2
Nominal cross section	16 mm ²

Level 1 above 1 below 1

Screw thread	M5
Tightening torque	2 ... 2.5 Nm
Stripping length	11 mm
Internal cylindrical gage	A7
Connection in acc. with standard	IEC 60947-1 / -3
Conductor cross section rigid	1.5 mm ² ... 25 mm ²
Cross section AWG	14 ... 4 (converted acc. to IEC)
Conductor cross section flexible	1.5 mm ² ... 16 mm ²
Conductor cross section, flexible [AWG]	14 ... 6 (converted acc. to IEC)
Conductor cross-section flexible (ferrule without plastic sleeve)	1.5 mm ² ... 16 mm ²
Flexible conductor cross section (ferrule with plastic sleeve)	1.5 mm ² ... 16 mm ²
Cross-section with insertion bridge, rigid	10 mm ²
Cross-section with insertion bridge, flexible	10 mm ²
2 conductors with same cross section, solid	1.5 mm ² ... 4 mm ²
2 conductors with same cross section, flexible	1.5 mm ² ... 4 mm ²
2 conductors with same cross section, flexible, with ferrule without plastic sleeve	1.5 mm ² ... 4 mm ²
2 conductors with the same cross section, flexible, with TWIN ferrule with plastic sleeve	1.5 mm ² ... 10 mm ²
Nominal current	32 A (the current and voltage are determined by the fuse)
Maximum load current	32 A (the current and voltage are determined by the fuse)
Nominal voltage	690 V AC (the current and voltage are determined by the fuse)
Nominal cross section	16 mm ²

UK 10,3-HESI N - Fuse modular terminal block



3048386

<https://www.phoenixcontact.com/us/products/3048386>

Dimensions

Width	18 mm
Height	81 mm
Depth on NS 35/7,5	65.5 mm
Depth on NS 35/15	73 mm

Material specifications

Color	black
Flammability rating according to UL 94	V2
Insulating material group	III a
Relative insulation material temperature index (Elec., UL 746 B)	125 °C

Mechanical properties

Mechanical data

Open side panel	No
-----------------	----

Environmental and real-life conditions

Ambient conditions

Ambient temperature (operation)	-60 °C ... 85 °C (max. short-term operating temperature RTI Elec.)
Ambient temperature (storage/transport)	-25 °C ... 55 °C (for a short time, not exceeding 24 h, -60 °C to +70 °C)
Ambient temperature (assembly)	-5 °C ... 70 °C
Ambient temperature (actuation)	-5 °C ... 70 °C
Permissible humidity (storage/transport)	30 % ... 70 %

Standards and regulations

Connection in acc. with standard	IEC 60947-1 / -3
----------------------------------	------------------

Mounting

Mounting type	NS 35/7,5
	NS 35/15

UK 10,3-HESI N - Fuse modular terminal block

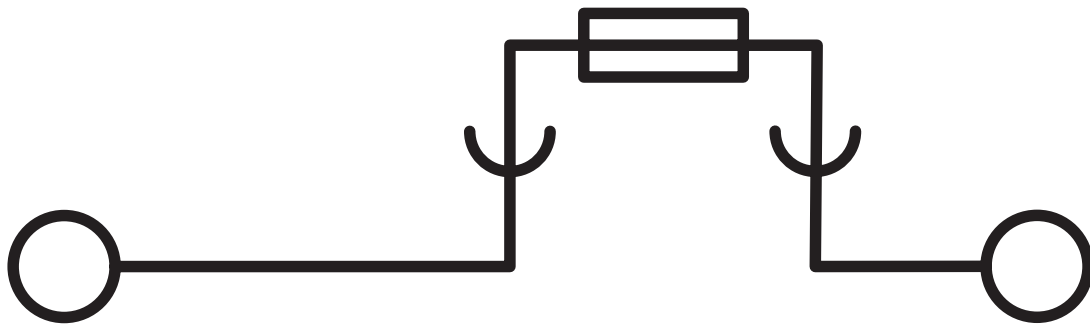
3048386

<https://www.phoenixcontact.com/us/products/3048386>



Drawings

Circuit diagram



UK 10,3-HESI N - Fuse modular terminal block





3048386

<https://www.phoenixcontact.com/us/products/3048386>


Approvals


To download certificates, visit the product detail page: <https://www.phoenixcontact.com/us/products/3048386>

 CSA Approval ID: 225908				
	Nominal voltage U_N	Nominal current I_N	Cross section AWG	Cross section mm^2
	600 V	30 A	18 - 3	-
Multi-conductor connection	600 V	30 A	18 - 6	-

 EAC Approval ID: RU C-DE.A*30.B.01742				
---	--	--	--	--

 EAC Approval ID: RU C-DE.BL08.B.00534				
---	--	--	--	--

 UL Listed Approval ID: FILE E 244294				
	Nominal voltage U_N	Nominal current I_N	Cross section AWG	Cross section mm^2
	600 V	30 A	-	18 - 3
Multi-conductor connection	600 V	30 A	-	18 - 6

 cUL Listed Approval ID: FILE E 244294				
	Nominal voltage U_N	Nominal current I_N	Cross section AWG	Cross section mm^2
	600 V	30 A	18 - 3	-
Multi-conductor connection	600 V	30 A	18 - 6	-

cULus Listed				
---------------------	--	--	--	--

UK 10,3-HESI N - Fuse modular terminal block



3048386

<https://www.phoenixcontact.com/us/products/3048386>

Classifications

ECLASS

ECLASS-11.0	27141116
ECLASS-12.0	27141116
ECLASS-13.0	27250113

ETIM

ETIM 8.0	EC000899
----------	----------

UNSPSC

UNSPSC 21.0	39121400
-------------	----------

UK 10,3-HESI N - Fuse modular terminal block



3048386

<https://www.phoenixcontact.com/us/products/3048386>

Environmental product compliance

China RoHS	Environmentally friendly use period: unlimited = EFUP-e
	No hazardous substances above threshold values

UK 10,3-HESI N - Fuse modular terminal block



3048386

<https://www.phoenixcontact.com/us/products/3048386>

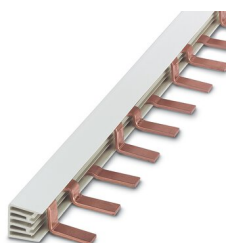
Accessories

i Note: Applying some accessories below might limit this product.

EB 56-18/L1-L2-L3 - Insertion bridge

3009367

<https://www.phoenixcontact.com/us/products/3009367>



Insertion bridge, pitch: 18 mm, number of positions: 56, color: gray

i Max. current carrying capacity: 76 A

EB 56-18 - Insertion bridge

3009299

<https://www.phoenixcontact.com/us/products/3009299>



Insertion bridge, pitch: 18 mm, number of positions: 56, color: gray

i Max. current carrying capacity: 76 A

UK 10,3-HESI N - Fuse modular terminal block



3048386

<https://www.phoenixcontact.com/us/products/3048386>


EB 2-18 - Insertion bridge

3009300

<https://www.phoenixcontact.com/us/products/3009300>



Insertion bridge, pitch: 17.8 mm, number of positions: 2, color: light gray

 Max. current carrying capacity: 76 A

EB 3-18 - Insertion bridge

3009305

<https://www.phoenixcontact.com/us/products/3009305>



Insertion bridge, pitch: 17.8 mm, number of positions: 3, color: light gray

 Max. current carrying capacity: 76 A

UK 10,3-HESI N - Fuse modular terminal block



3048386

<https://www.phoenixcontact.com/us/products/3048386>

VS-UK 10,3-HESI N 2POL - Connection pin

3048532

<https://www.phoenixcontact.com/us/products/3048532>



Connection pin, plastic, for coupling two fuse terminal blocks, color: white, diameter: 3 mm

VS-UK 10,3-HESI N 3POL - Connection pin

3048409

<https://www.phoenixcontact.com/us/products/3048409>



Connection pin, plastic, for coupling three fuse terminal blocks, color: white, diameter: 3 mm

UK 10,3-HESI N - Fuse modular terminal block

3048386

<https://www.phoenixcontact.com/us/products/3048386>



SF-SL 0,6X3,5-100 S-VDE - Screwdriver

1212587

<https://www.phoenixcontact.com/us/products/1212587>



Actuation tool, for ST terminal blocks, VDE insulated, with slimmer insulation integrated in the blade, also suitable for use as a bladed screwdriver, size: 0.6 x 3.5 x 100 mm, 2-component grip, with non-slip grip

NS 35/ 7,5 PERF 2000MM - DIN rail perforated

0801733

<https://www.phoenixcontact.com/us/products/0801733>



DIN rail perforated, acc. to EN 60715, material: Steel, galvanized, passivated with a thick layer, Standard profile, color: silver, Pack of 25 (50 m)

UK 10,3-HESI N - Fuse modular terminal block

3048386

<https://www.phoenixcontact.com/us/products/3048386>



NS 35/ 7,5 UNPERF 2000MM - DIN rail, unperforated

0801681

<https://www.phoenixcontact.com/us/products/0801681>



DIN rail, unperforated, acc. to EN 60715, material: Steel, galvanized, passivated with a thick layer, Standard profile, color: silver, Pack of 25 (50 m)

NS 35/ 7,5 WH PERF 2000MM - DIN rail perforated

1204119

<https://www.phoenixcontact.com/us/products/1204119>



DIN rail perforated, acc. to EN 60715, material: Steel, Galvanized, white passivated, Standard profile, color: silver, Pack of 25 (50 m)

UK 10,3-HESI N - Fuse modular terminal block

3048386

<https://www.phoenixcontact.com/us/products/3048386>



NS 35/ 7,5 WH UNPERF 2000MM-VPE 10 - DIN rail, unperforated

1204122

<https://www.phoenixcontact.com/us/products/1204122>



DIN rail, unperforated, acc. to EN 60715, material: Steel, Galvanized, white passivated, Standard profile, color: silver, Pack of 10 (20 m)

NS 35/ 7,5 AL UNPERF 2000MM - DIN rail, unperforated

0801704

<https://www.phoenixcontact.com/us/products/0801704>



DIN rail, unperforated, acc. to EN 60715, material: Aluminum, uncoated, Standard profile, color: silver, Pack of 25 (50 m)

UK 10,3-HESI N - Fuse modular terminal block

3048386

<https://www.phoenixcontact.com/us/products/3048386>



NS 35/ 7,5 ZN PERF 2000MM - DIN rail perforated

1206421

<https://www.phoenixcontact.com/us/products/1206421>



DIN rail perforated, acc. to EN 60715, material: Steel, galvanized, Standard profile, color: silver, Pack of 25 (50 m)

NS 35/ 7,5 ZN UNPERF 2000MM - DIN rail, unperforated

1206434

<https://www.phoenixcontact.com/us/products/1206434>



DIN rail, unperforated, acc. to EN 60715, material: Steel, galvanized, Standard profile, color: silver, Pack of 25 (50 m)

UK 10,3-HESI N - Fuse modular terminal block

3048386

<https://www.phoenixcontact.com/us/products/3048386>



NS 35/ 7,5 CU UNPERF 2000MM-VPE 10 - DIN rail, unperforated

0801762

<https://www.phoenixcontact.com/us/products/0801762>



DIN rail, unperforated, acc. to EN 60715, material: Copper, uncoated, Standard profile, color: copper-colored, Pack of 10 (20 m)

NS 35/ 7,5 CAP - End cap

1206560

<https://www.phoenixcontact.com/us/products/1206560>

DIN rail end piece, for DIN rail NS 35/7.5



UK 10,3-HESI N - Fuse modular terminal block

3048386

<https://www.phoenixcontact.com/us/products/3048386>



NS 35/15 PERF 2000MM - DIN rail perforated

1201730

<https://www.phoenixcontact.com/us/products/1201730>



DIN rail perforated, similar to EN 60715, material: Steel, galvanized, passivated with a thick layer, Standard profile, color: silver, Pack of 25 (50 m)

NS 35/15 UNPERF 2000MM - DIN rail, unperforated

1201714

<https://www.phoenixcontact.com/us/products/1201714>



DIN rail, unperforated, similar to EN 60715, material: Steel, galvanized, passivated with a thick layer, Standard profile, color: silver, Pack of 25 (50 m)

UK 10,3-HESI N - Fuse modular terminal block

3048386

<https://www.phoenixcontact.com/us/products/3048386>



NS 35/15 WH PERF 2000MM - DIN rail perforated

0806602

<https://www.phoenixcontact.com/us/products/0806602>



DIN rail perforated, similar to EN 60715, material: Steel, Galvanized, white passivated, Standard profile, color: white, Pack of 25 (50 m)

NS 35/15 WH UNPERF 2000MM-VPE 10 - DIN rail, unperforated

1204135

<https://www.phoenixcontact.com/us/products/1204135>



DIN rail, unperforated, similar to EN 60715, material: Steel, Galvanized, white passivated, Standard profile, color: silver, Pack of 10 (20 m)

UK 10,3-HESI N - Fuse modular terminal block

3048386

<https://www.phoenixcontact.com/us/products/3048386>



NS 35/15 AL UNPERF 2000MM - DIN rail, unperforated

1201756

<https://www.phoenixcontact.com/us/products/1201756>



DIN rail, unperforated, similar to EN 60715, material: Aluminum, uncoated, Standard profile, color: silver

NS 35/15 ZN PERF 2000MM - DIN rail perforated

1206599

<https://www.phoenixcontact.com/us/products/1206599>



DIN rail perforated, similar to EN 60715, material: Steel, galvanized, Standard profile, color: silver, Pack of 25 (50 m)

UK 10,3-HESI N - Fuse modular terminal block

3048386

<https://www.phoenixcontact.com/us/products/3048386>



NS 35/15 ZN UNPERF 2000MM - DIN rail, unperforated

1206586

<https://www.phoenixcontact.com/us/products/1206586>



DIN rail, unperforated, similar to EN 60715, material: Steel, galvanized, Standard profile, color: silver, Pack of 25 (50 m)

NS 35/15 CU UNPERF 2000MM-VPE 10 - DIN rail, unperforated

1201895

<https://www.phoenixcontact.com/us/products/1201895>



DIN rail, unperforated, similar to EN 60715, material: Copper, uncoated, Standard profile, color: copper-colored, Pack of 10 (20 m)

UK 10,3-HESI N - Fuse modular terminal block

3048386

<https://www.phoenixcontact.com/us/products/3048386>



NS 35/15 CAP - End cap

1206573

<https://www.phoenixcontact.com/us/products/1206573>

DIN rail end piece, for DIN rail NS 35/15



NS 35/15-2,3 UNPERF 2000MM-VPE 10 - DIN rail, unperforated

1201798

<https://www.phoenixcontact.com/us/products/1201798>



DIN rail, unperforated, acc. to EN 60715, material: Steel, galvanized, passivated with a thick layer, Standard profile 2.3 mm, color: silver, Pack of 10 (20 m)

UK 10,3-HESI N - Fuse modular terminal block



3048386

<https://www.phoenixcontact.com/us/products/3048386>

ZBF10:UNBEDRUCKT - Zack Marker strip, flat

0809997

<https://www.phoenixcontact.com/us/products/0809997>



Zack Marker strip, flat, Strip, white, unlabeled, can be labeled with: CMS-P1-PLOTTER, PLOTMARK, mounting type: snapped, for terminal block width: 10 mm, lettering field size: 5.15 x 10 mm, Number of individual labels: 10

ZBF10 CUS - Zack Marker strip, flat

0825031

<https://www.phoenixcontact.com/us/products/0825031>



Zack Marker strip, flat, can be ordered: Strip, white, labeled according to customer specifications, mounting type: snap into flat marker groove, for terminal block width: 10 mm, lettering field size: 5.15 x 10 mm, Number of individual labels: 10

UK 10,3-HESI N - Fuse modular terminal block



3048386

<https://www.phoenixcontact.com/us/products/3048386>

ZBF10,LGS:FORTL.ZAHLEN - Zack Marker strip, flat

0810009

<https://www.phoenixcontact.com/us/products/0810009>



Zack Marker strip, flat, Strip, white, labeled, printed horizontally: consecutive numbers 1 ... 10, 11 ... 20, etc. up to 91 ... 100, mounting type: snapped, for terminal block width: 10 mm, lettering field size: 5.15 x 10 mm, Number of individual labels: 10

ZBF10,QR:FORTL.ZAHLEN - Zack Marker strip, flat

0810025

<https://www.phoenixcontact.com/us/products/0810025>



Zack Marker strip, flat, Strip, white, labeled, Printed vertically: consecutive numbers 1 ... 10, 11 ... 20, etc. up to 91 ... 100, mounting type: snapped, for terminal block width: 10 mm, lettering field size: 5.15 x 10 mm, Number of individual labels: 10

UK 10,3-HESI N - Fuse modular terminal block



3048386

<https://www.phoenixcontact.com/us/products/3048386>

UC-TMF 10 - Marker for terminal blocks

0818124

<https://www.phoenixcontact.com/us/products/0818124>



Marker for terminal blocks, Sheet, white, unlabeled, can be labeled with: BLUEMARK ID COLOR, BLUEMARK ID, BLUEMARK CLED, PLOTMARK, CMS-P1-PLOTTER, mounting type: snapped, for terminal block width: 10.2 mm, lettering field size: 9.6 x 5.1 mm, Number of individual labels: 48

UC-TMF 10 CUS - Marker for terminal blocks

0824662

<https://www.phoenixcontact.com/us/products/0824662>



Marker for terminal blocks, can be ordered: by sheet, white, labeled according to customer specifications, mounting type: snap into flat marker groove, for terminal block width: 10.2 mm, lettering field size: 9.6 x 5.1 mm, Number of individual labels: 48

UK 10,3-HESI N - Fuse modular terminal block



3048386

<https://www.phoenixcontact.com/us/products/3048386>

UCT-TMF 10 - Marker for terminal blocks

0829204

<https://www.phoenixcontact.com/us/products/0829204>



Marker for terminal blocks, Sheet, white, unlabeled, can be labeled with: TOPMARK NEO, TOPMARK LASER, BLUEMARK ID COLOR, BLUEMARK ID, BLUEMARK CLED, THERMOMARK PRIME, THERMOMARK CARD 2.0, THERMOMARK CARD, mounting type: snapped, for terminal block width: 10.2 mm, lettering field size: 9.4 x 4.7 mm, Number of individual labels: 36

UCT-TMF 10 CUS - Marker for terminal blocks

0829679

<https://www.phoenixcontact.com/us/products/0829679>



Marker for terminal blocks, can be ordered: by sheet, white, labeled according to customer specifications, mounting type: snap into flat marker groove, for terminal block width: 10.2 mm, lettering field size: 9.4 x 4.7 mm, Number of individual labels: 36

UK 10,3-HESI N - Fuse modular terminal block



3048386

<https://www.phoenixcontact.com/us/products/3048386>

CLIPFIX 35 - End clamp

3022218

<https://www.phoenixcontact.com/us/products/3022218>



Quick mounting end clamp for NS 35/7,5 DIN rail or NS 35/15 DIN rail, with marking option, width: 9.5 mm, color: gray

CLIPFIX 35-5 - End clamp

3022276

<https://www.phoenixcontact.com/us/products/3022276>



Quick mounting end clamp for NS 35/7,5 DIN rail or NS 35/15 DIN rail, with marking option, with parking option for FBS...5, FBS...6, KSS 5, KSS 6, width: 5.15 mm, color: gray

UK 10,3-HESI N - Fuse modular terminal block

3048386

<https://www.phoenixcontact.com/us/products/3048386>

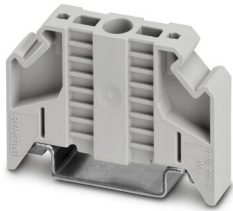


E/NS 35 N - End clamp

0800886

<https://www.phoenixcontact.com/us/products/0800886>

End clamp, width: 9.5 mm, color: gray



Phoenix Contact 2023 © - all rights reserved

<https://www.phoenixcontact.com>

Phoenix Contact USA
586 Fulling Mill Road
Middletown, PA 17057, United States
(+717) 944-1300
info@phoenixcon.com