

REL-MR-BL-24DC/21-21/MS - Single relay



2908181

<https://www.phoenixcontact.com/us/products/2908181>

Please be informed that the data shown in this PDF document is generated from our online catalog. Please find the complete data in the user documentation. Our general terms of use for downloads are valid.



Plug-in miniature relay, with power contact, 2 changeover contacts, test button, mechanical switch position indicator, polarity: bipolar, input voltage: 24 V DC

Commercial data

Item number	2908181
Packing unit	1 pc
Minimum order quantity	10 pc
Sales key	C460
Product key	CK6195
Catalog page	Page 294 (C-5-2019)
GTIN	4055626279404
Weight per piece (including packing)	19.1 g
Weight per piece (excluding packing)	18 g
Customs tariff number	85364190
Country of origin	CN

REL-MR-BL-24DC/21-21/MS - Single relay



2908181

<https://www.phoenixcontact.com/us/products/2908181>

Technical data

Product properties

Product type	Single relay
Operating mode	100% operating factor
Mechanical service life	5x 10 ⁶ cycles

Insulation characteristics

Overvoltage category	III
Pollution degree	2

Electrical properties

Service life electrical	see diagram
Maximum power dissipation for nominal condition	0.41 W
Test voltage (Winding/contact)	5 kV AC (50 Hz, 1 min., winding/contact)
Test voltage (Changeover contact/changeover contact)	2.5 kV AC (50 Hz, 1 min., changeover contact/changeover contact)
Rated insulation voltage	250 V AC

Input data

Coil side

Nominal input voltage U_N	24 V DC
Input voltage range	19.2 V DC ... 52.8 V DC
Input voltage range in reference to U_N	0.8 ... 2.2 (see diagram)
Drive and function	monostable
Drive (polarity)	non-polarized
Typical input current at U_N	17 mA
Typical response time	9 ms
Typical release time	6 ms

Output data

Switching

Contact switching type	2 changeover contacts
Type of switch contact	Single contact
Contact material	AgNi
Maximum switching voltage	250 V AC/DC
Minimum switching voltage	12 V (at 10 mA)
Limiting continuous current	8 A
Maximum inrush current	16 A (20 ms)
Min. switching current	10 mA (at 12 V)
Interrupting rating (ohmic load) max.	192 W (at 24 V DC) 62 W (at 48 V DC) 42 W (at 60 V DC)

REL-MR-BL-24DC/21-21/MS - Single relay



2908181

<https://www.phoenixcontact.com/us/products/2908181>

	55 W (at 110 V DC)
	66 W (at 220 V DC)

Connection data

Connection method	Plug / solder connection
-------------------	--------------------------

Dimensions

Width	13 mm
Height	29 mm
Depth	25.5 mm

Environmental and real-life conditions

Ambient conditions

Degree of protection	RT II
Ambient temperature (operation)	-40 °C ... 70 °C
Ambient temperature (storage/transport)	-40 °C ... 85 °C

Standards and regulations

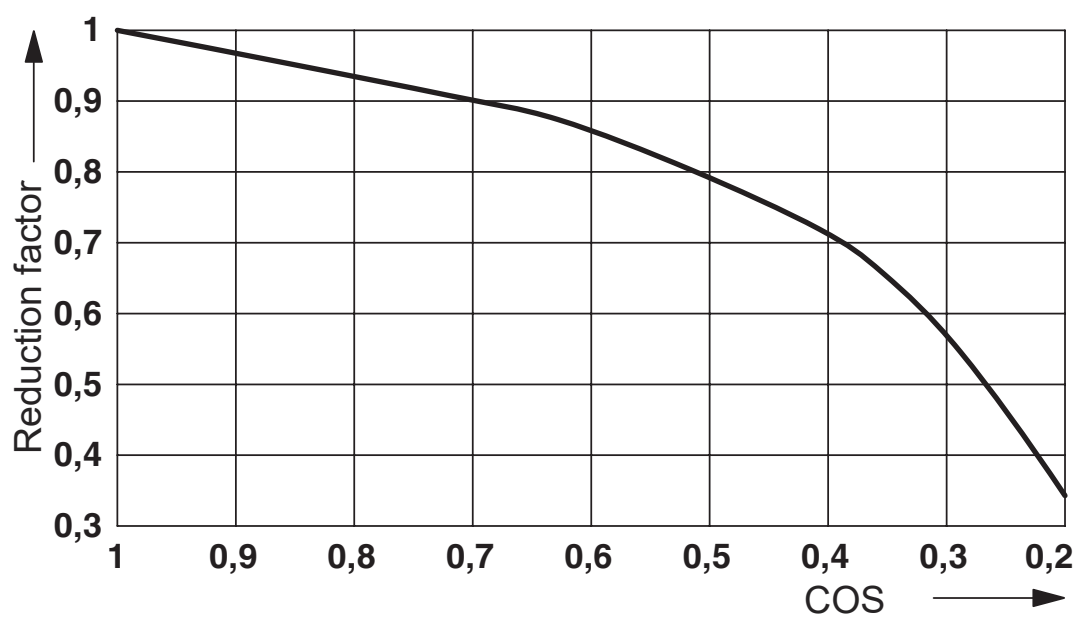
Standards/regulations	IEC 61810
	IEC 60664

Mounting

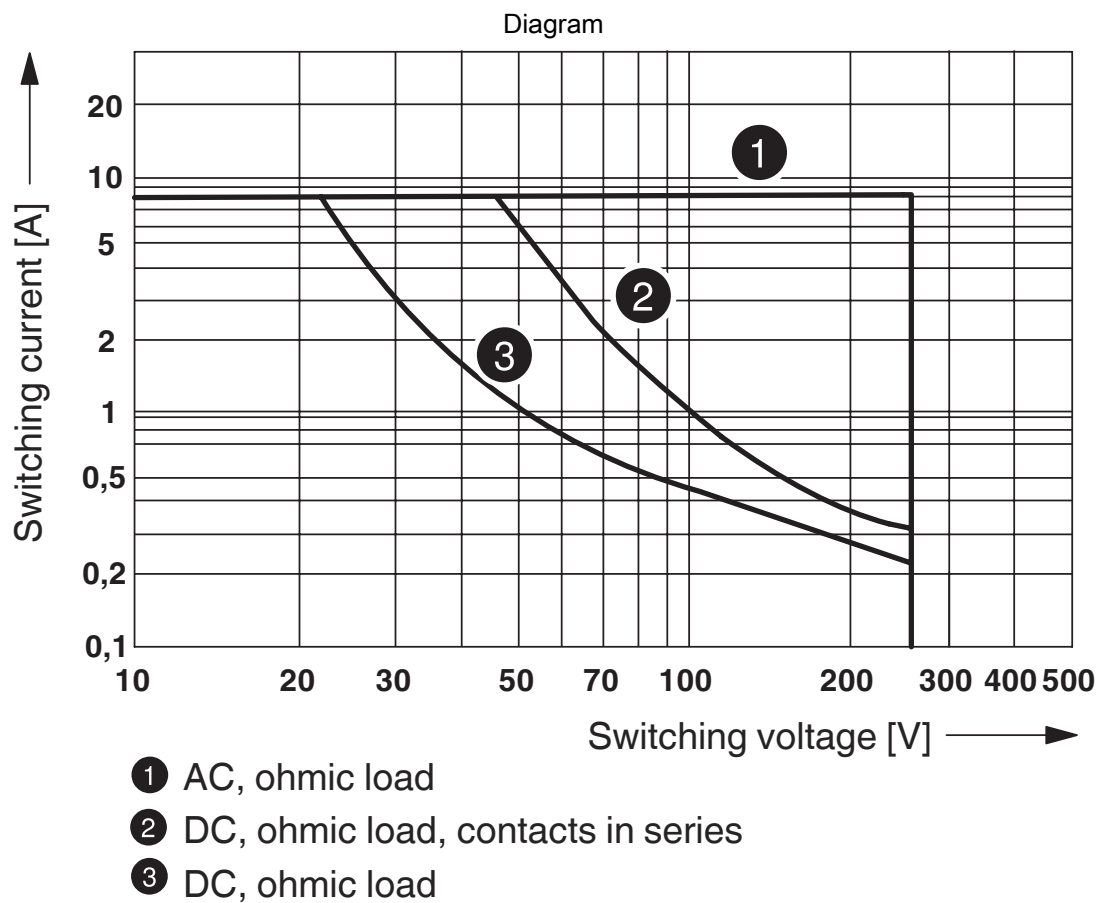
Mounting position	any
-------------------	-----

Drawings

Diagram

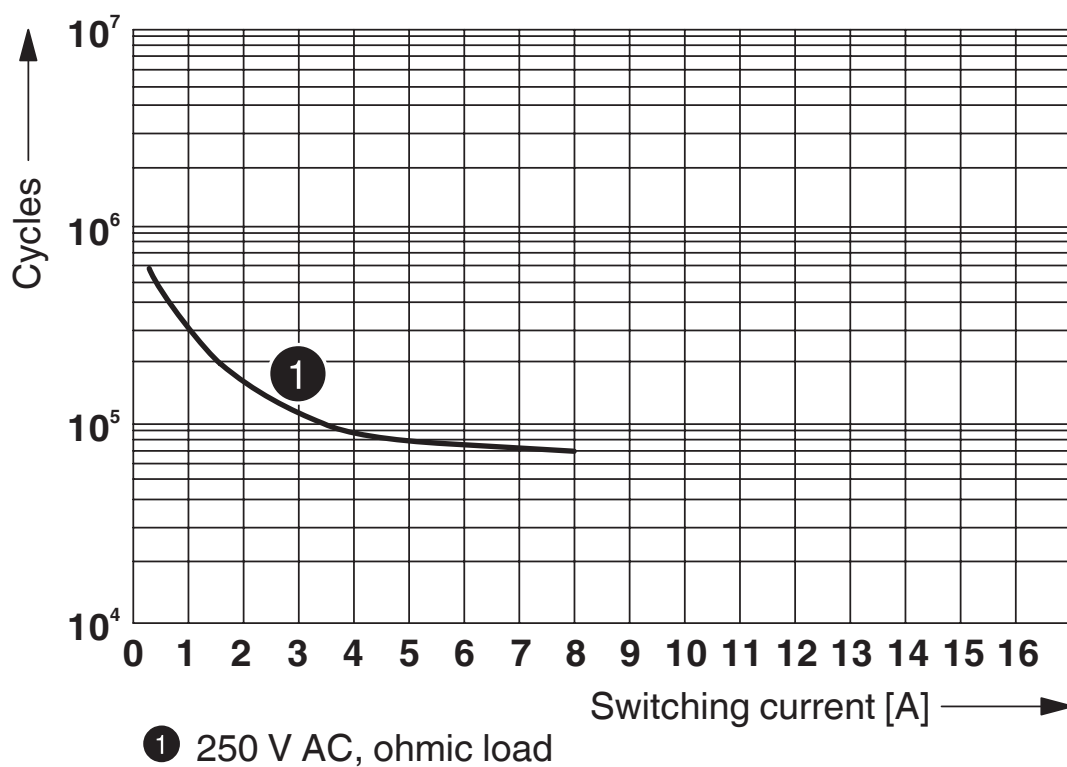


Service life reduction factor with various cos phi



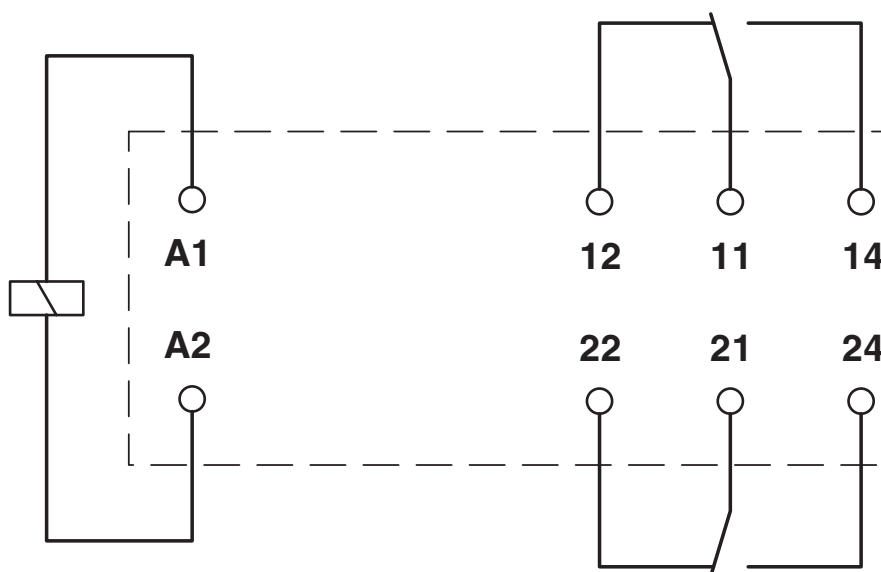
Interrupting rating

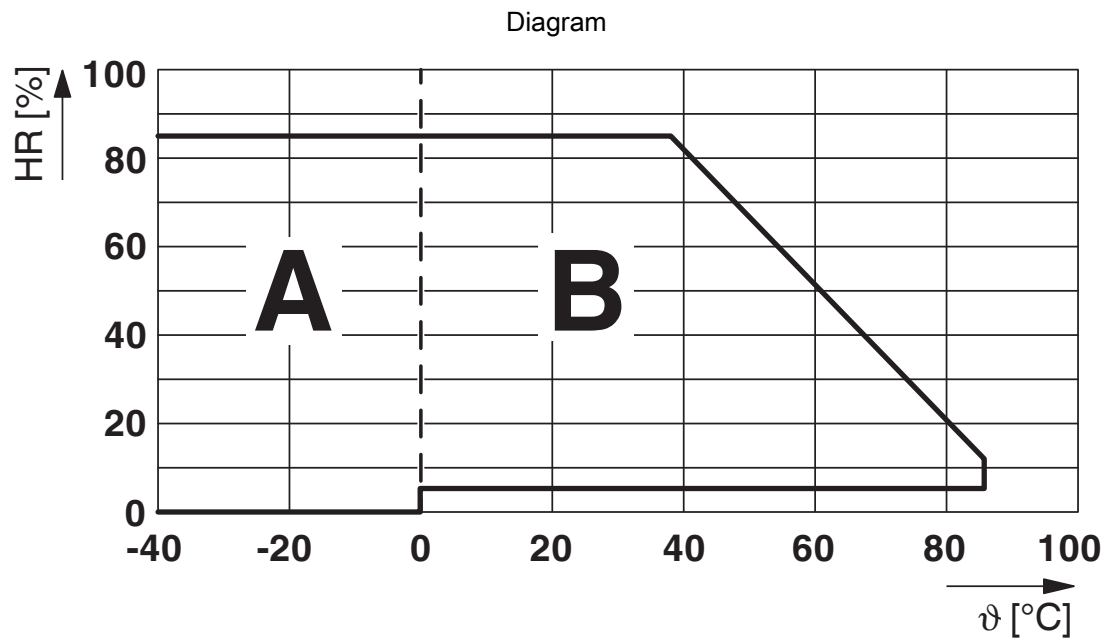
Diagram



Electrical service life

Circuit diagram





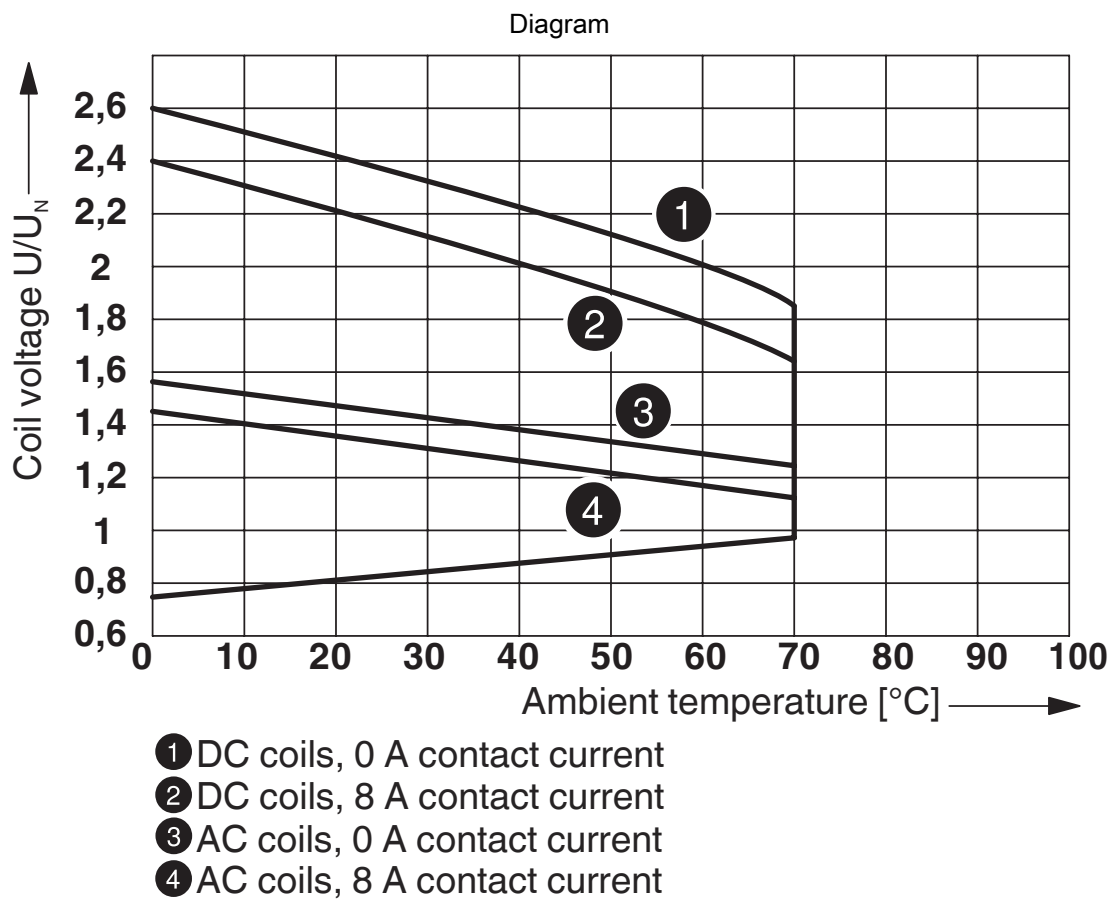
Permissible humidity for operation and storage.

The maximum permissible ambient temperature as specified in the data sheet must be observed.

Area A: Ice buildup at ambient temperatures $\leq 0^{\circ}\text{C}$ must be prevented

Area B: Condensation at ambient temperatures $> 0^{\circ}\text{C}$ must be prevented

On 30 full days that are naturally distributed across an entire year, a humidity level of 95% is permissible at an ambient temperature $\leq 25^{\circ}\text{C}$.



Operating voltage range

REL-MR-BL-24DC/21-21/MS - Single relay



2908181

<https://www.phoenixcontact.com/us/products/2908181>

Approvals

To download certificates, visit the product detail page: <https://www.phoenixcontact.com/us/products/2908181>



cUL Recognized

Approval ID: FILE E 195083



UL Recognized

Approval ID: FILE E 195083



EAC

Approval ID: TR_TS_D_00573_c



EAC

Approval ID: RU*C-DE.*08.B.00010

cULus Recognized

REL-MR-BL-24DC/21-21/MS - Single relay



2908181

<https://www.phoenixcontact.com/us/products/2908181>

Classifications

ECLASS

ECLASS-11.0	27371601
ECLASS-12.0	27371601
ECLASS-13.0	27371601

ETIM

ETIM 8.0	EC001437
----------	----------

UNSPSC

UNSPSC 21.0	39122300
-------------	----------

Environmental product compliance

China RoHS	Environmentally friendly use period: unlimited = EFUP-e
	No hazardous substances above threshold values

REL-MR-BL-24DC/21-21/MS - Single relay



2908181

<https://www.phoenixcontact.com/us/products/2908181>

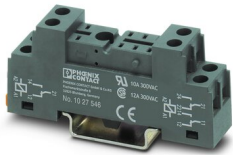
Accessories

ECOR-1-BSC2-RT/2X21 - Relay base

1027546

<https://www.phoenixcontact.com/us/products/1027546>

ECOR-1... relay base, for miniature power relays or miniature switching relays with 1 or 2 changeover contacts, bolt connection, for mounting on NS 35/7,5.



ECOR-1-BSC3/2X21 - Relay base

2907518

<https://www.phoenixcontact.com/us/products/2907518>

ECOR-1... relay base, for miniature power relay or miniature switching relay with 1 or 2 changeover contacts, screw connection, plug-in option for input/interference suppression modules, for mounting on NS 35/7,5



REL-MR-BL-24DC/21-21/MS - Single relay



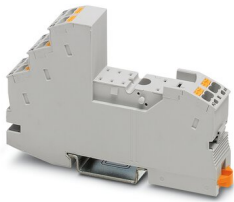
2908181

<https://www.phoenixcontact.com/us/products/2908181>

RIF-1-BPT/2X21 - Relay base

2900931

<https://www.phoenixcontact.com/us/products/2900931>

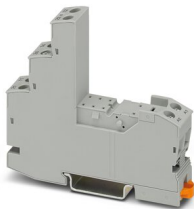


Relay base RIF-1..., for miniature power relay with 1 or 2 changeover contacts or solid-state relays of the same design, Push-in connection, plug-in option for input/interference suppression modules, for mounting on NS 35/7,5

RIF-1-BSC/2X21 - Relay base

2900930

<https://www.phoenixcontact.com/us/products/2900930>



RIF-1... relay base, for miniature power relay with 1 or 2 changeover contacts or identical solid-state relays, screw connection, plug-in option for input/interference suppression modules, for mounting on NS 35/7,5

Phoenix Contact 2023 © - all rights reserved
<https://www.phoenixcontact.com>

Phoenix Contact USA
586 Fulling Mill Road
Middletown, PA 17057, United States
(+717) 944-1300
info@phoenixcon.com