

EG 22,5-AG/ABS GN - Upper part of housing



2906636

<https://www.phoenixcontact.com/us/products/2906636>

Please be informed that the data shown in this PDF document is generated from our online catalog. Please find the complete data in the user documentation. Our general terms of use for downloads are valid.

Component housing, Cover, closed, width: 22.5 mm, height: 75 mm, color: green (6021)



Your advantages

- Tool-free mounting

Commercial data

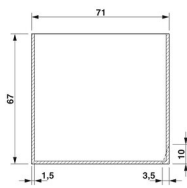
Item number	2906636
Packing unit	1 pc
Minimum order quantity	20 pc
Sales key	AC11
Product key	ACHCGA
Catalog page	Page 718 (C-1-2013)
GTIN	4017918126438
Weight per piece (including packing)	10.83 g
Weight per piece (excluding packing)	9.74 g
Customs tariff number	85389099
Country of origin	PL

Technical data

Product properties

Product type	Upper housing part
Product family	EG
Number of positions	8
Type	Cover, closed
Housing type	Component housing
Ventilation openings present	no
Housing series	EG

Dimensions

Dimensional drawing	
Width	22.5 mm
Height	75 mm

PCB design

PCB thickness	1.4 mm ... 1.8 mm
---------------	-------------------

Material specifications

Color	green (6021)
Flammability rating according to UL 94	HB
Surface characteristics	untreated
Housing material	ABS

Environmental and real-life conditions

Ambient conditions

Degree of protection	IP20
Max. IP code to attain	IP20
Ambient temperature (operation)	-40 °C ... 80 °C (depending on power dissipation)
Ambient temperature (storage/transport)	-40 °C ... 55 °C
Ambient temperature (assembly)	-5 °C ... 80 °C

PCB data

Thickness of the PCB	1.4 mm ... 1.8 mm
----------------------	-------------------

Mounting

Mounting type	Snap in
Mounting position	Vertical (horizontal DIN rail)

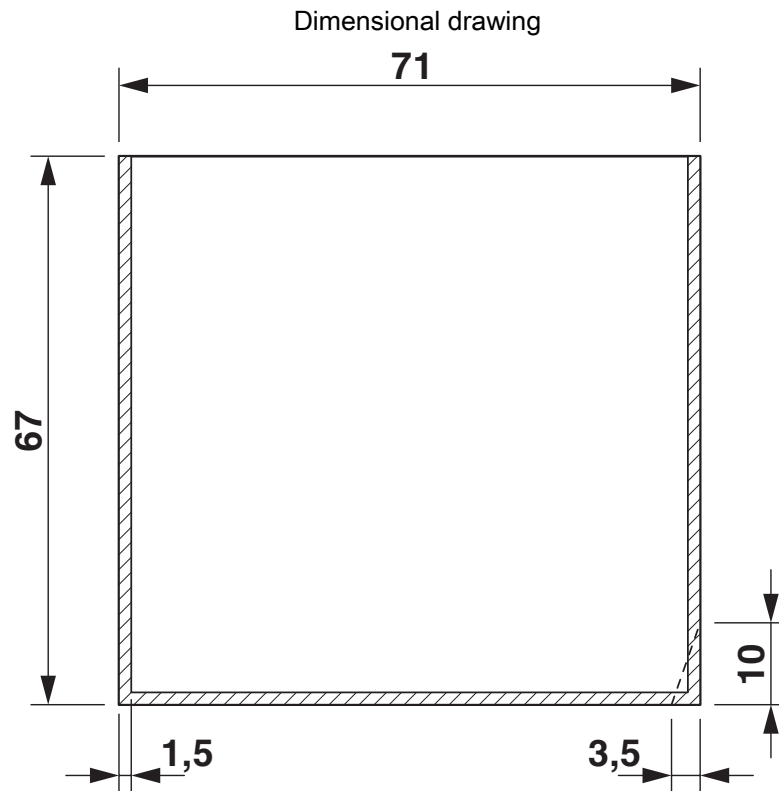
EG 22,5-AG/ABS GN - Upper part of housing

2906636

<https://www.phoenixcontact.com/us/products/2906636>



Drawings



valid for PCB 7, see explosion drawing

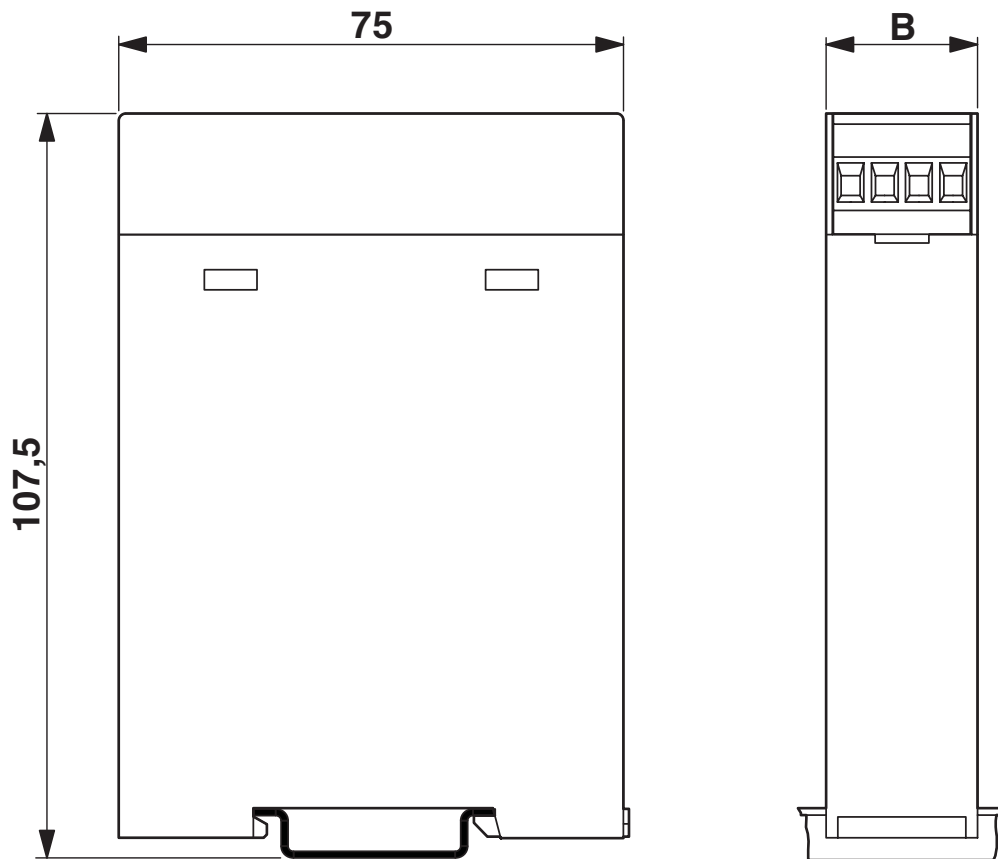
EG 22,5-AG/ABS GN - Upper part of housing

2906636

<https://www.phoenixcontact.com/us/products/2906636>



Dimensional drawing



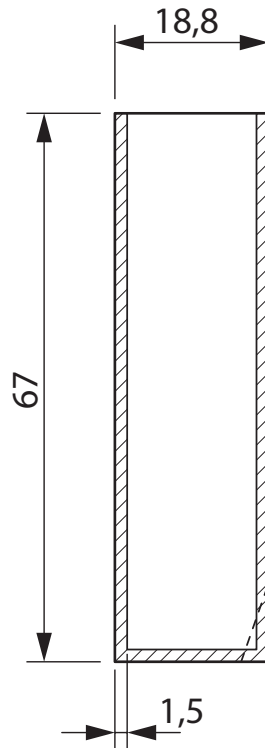
EG 22,5-AG/ABS GN - Upper part of housing

2906636

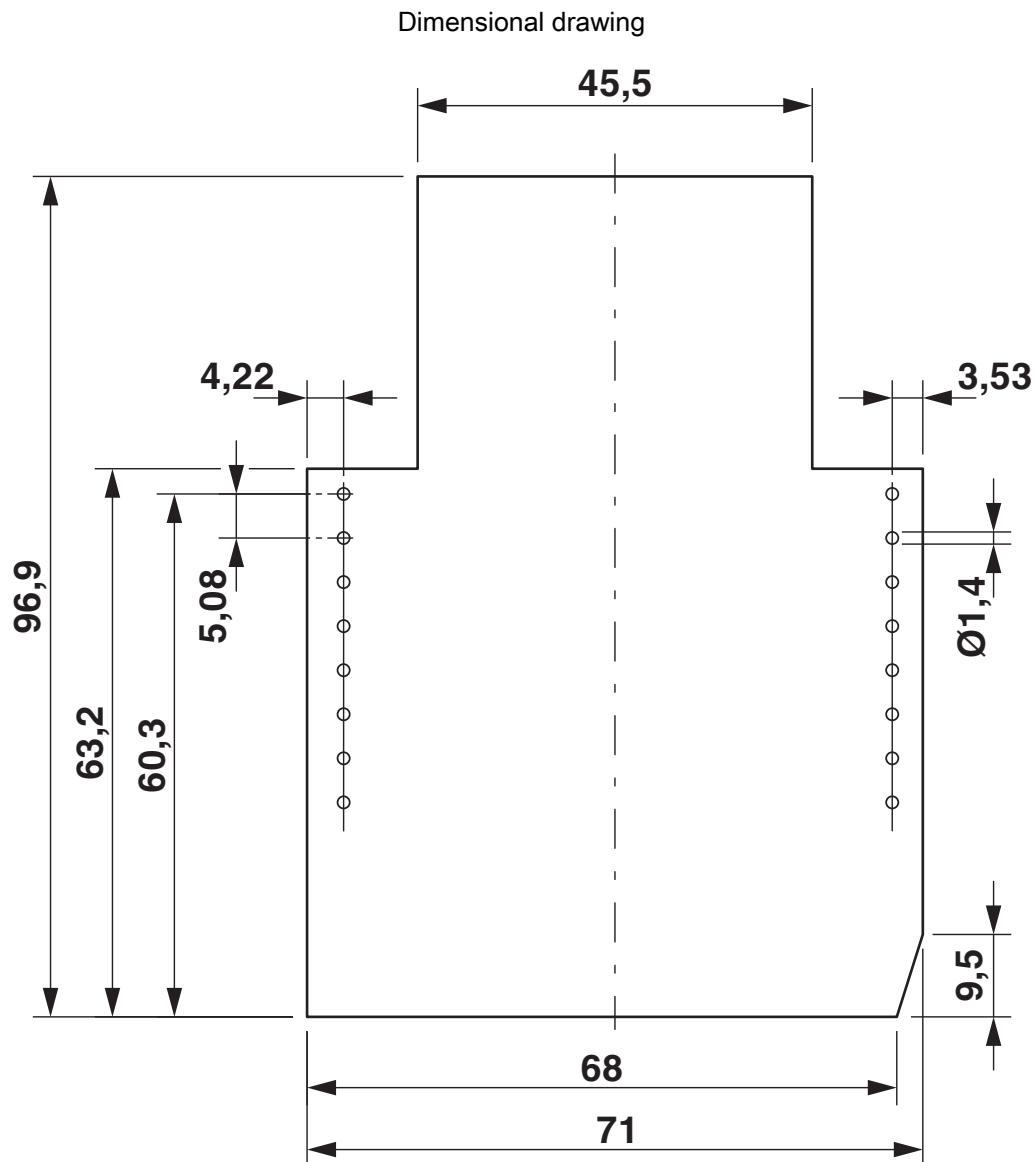
<https://www.phoenixcontact.com/us/products/2906636>



Dimensional drawing



valid for PCB 1, see explosion drawing

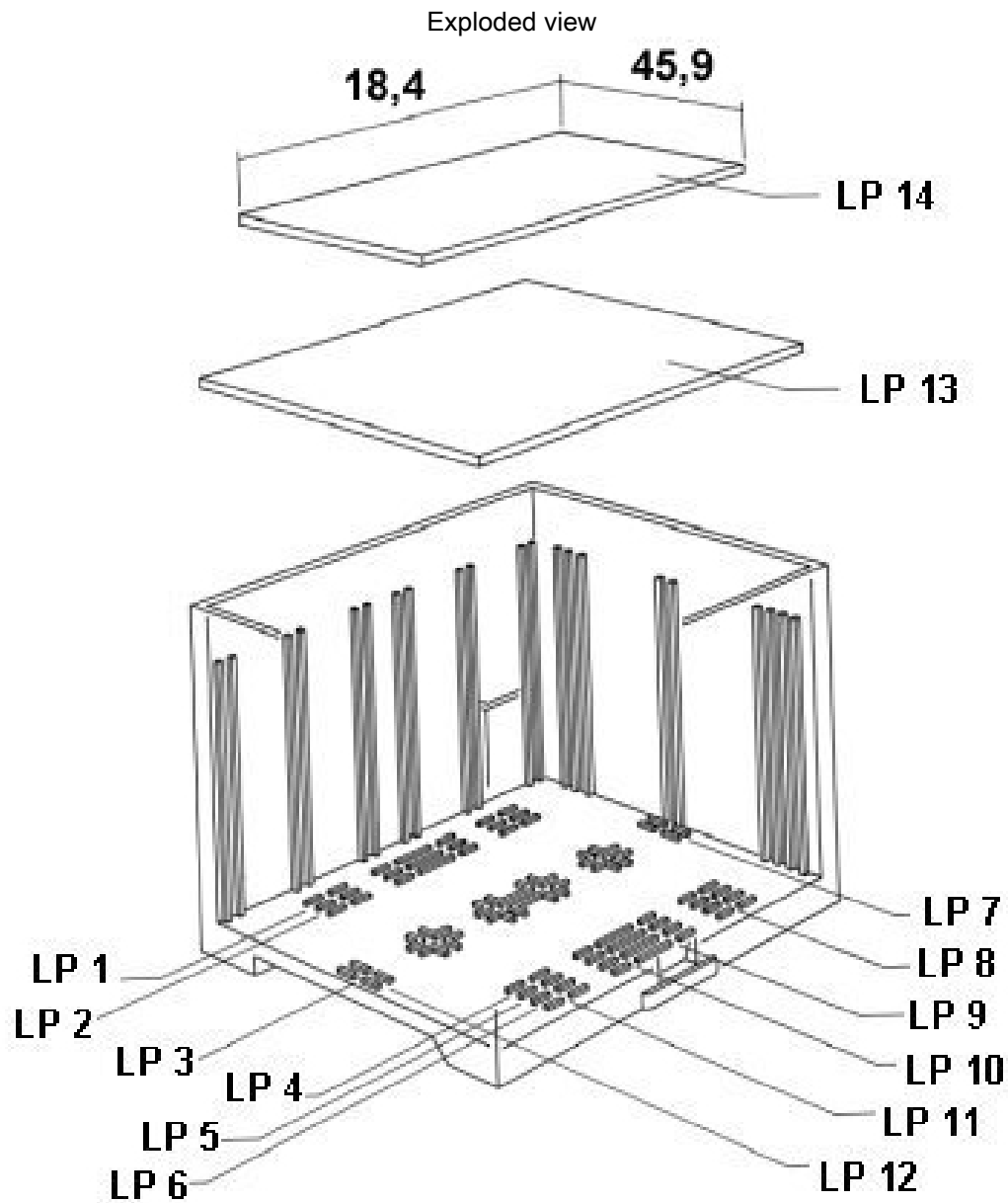


Component mounting side, if the double-level upper part is used

EG 22,5-AG/ABS GN - Upper part of housing

2906636

<https://www.phoenixcontact.com/us/products/2906636>

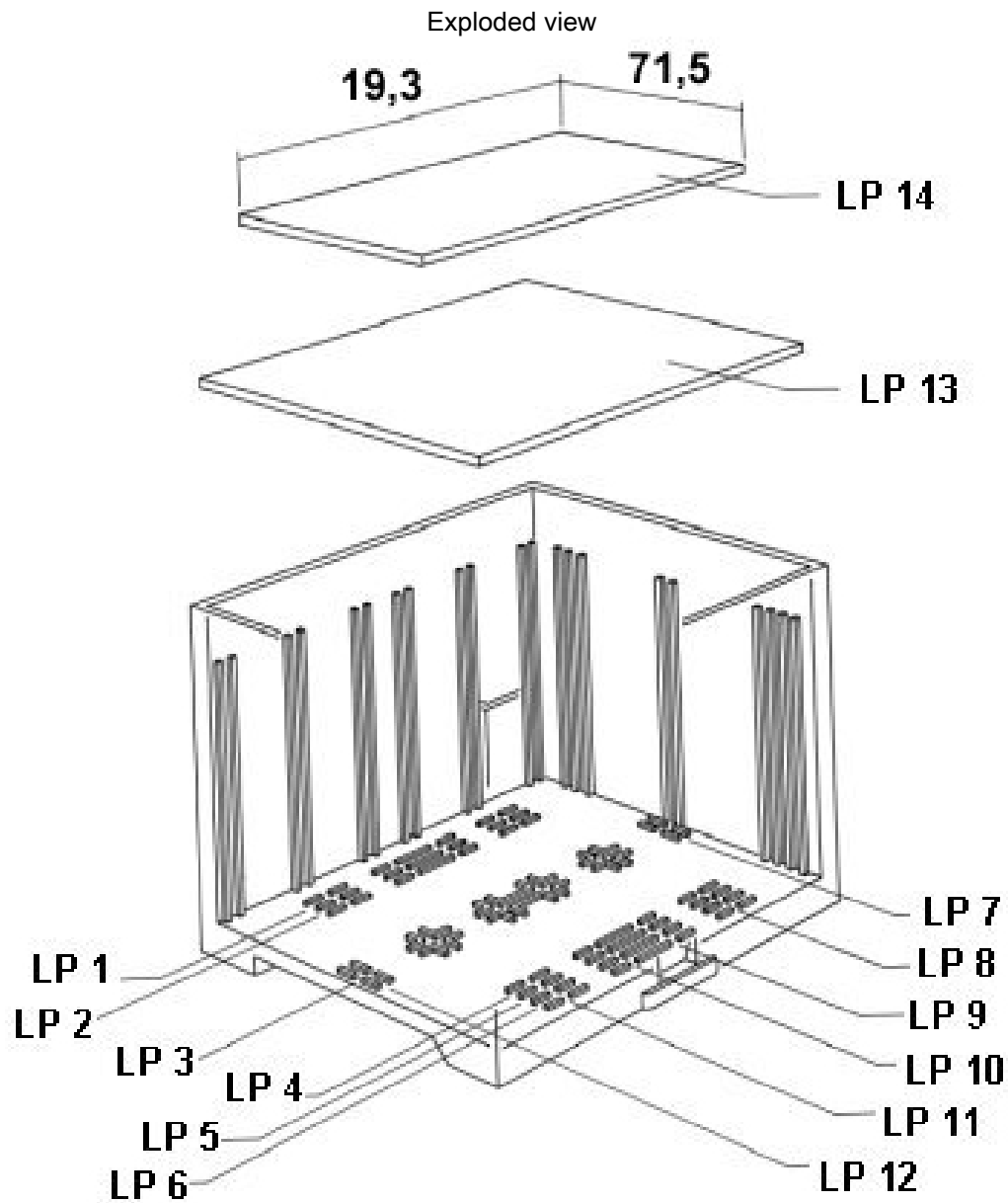


valid for PCB 14

EG 22,5-AG/ABS GN - Upper part of housing

2906636

<https://www.phoenixcontact.com/us/products/2906636>



valid for PCB 13

EG 22,5-AG/ABS GN - Upper part of housing

2906636

<https://www.phoenixcontact.com/us/products/2906636>



Approvals

🔗 To download certificates, visit the product detail page: <https://www.phoenixcontact.com/us/products/2906636>



UL Recognized

Approval ID: FILE E 240868

EG 22,5-AG/ABS GN - Upper part of housing

2906636

<https://www.phoenixcontact.com/us/products/2906636>



Classifications

ECLASS

ECLASS-11.0	27182702
ECLASS-13.0	27190603

ETIM

ETIM 8.0	EC001031
----------	----------

UNSPSC

UNSPSC 21.0	31261500
-------------	----------

EG 22,5-AG/ABS GN - Upper part of housing



2906636
<https://www.phoenixcontact.com/us/products/2906636>

Environmental product compliance

China RoHS	Environmentally friendly use period: unlimited = EFUP-e
	No hazardous substances above threshold values

Phoenix Contact 2023 © - all rights reserved
<https://www.phoenixcontact.com>

Phoenix Contact USA
586 Fulling Mill Road
Middletown, PA 17057, United States
(+717) 944-1300
info@phoenixcon.com