

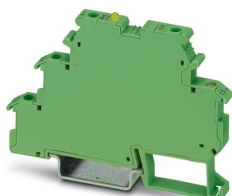
# DEK-OV- 12DC/ 24DC/ 3 - Solid-state relay terminal block



2941387

<https://www.phoenixcontact.com/us/products/2941387>

Please be informed that the data shown in this PDF document is generated from our online catalog. Please find the complete data in the user documentation. Our general terms of use for downloads are valid.



Power solid-state relay terminal block, input: 12 V DC, output: 3 - 30 V DC/3 A, terminal block width: 6.2 mm

## Your advantages

- Actuator version available
- EB-DIK insertion bridges
- Labeling and mounting with user-friendly modular terminal blocks
- Wear-free switching of up to 24 V DC/10 A or 240 V AC/800 mA
- Integrated output protective circuit
- Integrated input circuit
- Electrical isolation between input and output at up to 2.5 kVrms
- Status indicator
- Zero voltage switch at AC output

## Commercial data

Item number	2941387
Packing unit	1 pc
Minimum order quantity	1 pc
Sales key	C460
Product key	CK61D2
Catalog page	Page 443 (C-5-2019)
GTIN	4017918080402
Weight per piece (including packing)	22 g
Weight per piece (excluding packing)	21.6 g
Customs tariff number	85364190
Country of origin	CN

# DEK-OV- 12DC/ 24DC/ 3 - Solid-state relay terminal block



2941387

<https://www.phoenixcontact.com/us/products/2941387>

## Technical data

### Notes

General	Use of EB 80-DIK... bridges in the DEK terminal blocks: Absorption of humidity from the ambient air as well as an unfavorable tolerance between a larger number of DEK terminal blocks and the EB 80-DIK... bridge may cause (minor) expansion of the DEK housing. When the EB 80-DIK... bridges are used, therefore, it is recommended that these be disconnected after about 10 to 12 DEK terminal blocks and a wire bridge to the next DEK terminal block be inserted in their place.
---------	---

### Product properties

Product type	Solid-state relay module
Product family	DEK
Application	Output function
Operating mode	100% operating factor

### Insulation characteristics

Insulation	Basic insulation
------------	------------------

### Insulation characteristics: Standards/regulations

Insulation	Basic insulation
Overvoltage category	III
Pollution degree	2

### Electrical properties

Maximum power dissipation for nominal condition	0.1 W
Test voltage (Input/output)	2.5 kV AC (Input/output)

### Input data

Nominal input voltage $U_N$	12 V DC
Input voltage range in reference to $U_N$	0.8 ... 1.2
Input voltage range	9.6 V DC ... 14.4 V DC
Switching threshold "0" signal in reference to $U_N$	$\leq 0.4$
Switching threshold "1" signal in reference to $U_N$	$\geq 0.8$
Typical input current at $U_N$	8.5 mA
Typical response time	40 $\mu$ s
Typical turn-off time	200 $\mu$ s
Operating voltage display	Yellow LED
Protective circuit	Reverse polarity protection
Transmission frequency	300 Hz

### Output data

Contact switching type	1 N/O contact
Design of digital output	electronic
Output voltage range	3 V DC ... 30 V DC

# DEK-OV- 12DC/ 24DC/ 3 - Solid-state relay terminal block



2941387

<https://www.phoenixcontact.com/us/products/2941387>

Limiting continuous current	3 A (see derating curve)
Voltage drop at max. limiting continuous current	≤ 0.2 V
Output circuit	2-conductor, floating
Protective circuit	Reverse polarity protection; Polarity protection diode
	Surge protection

## Connection data

Connection method	Screw connection
Stripping length	8 mm
Screw thread	M3
Conductor cross section rigid	0.2 mm <sup>2</sup> ... 2.5 mm <sup>2</sup>
Conductor cross section flexible	0.2 mm <sup>2</sup> ... 2.5 mm <sup>2</sup>
Conductor cross section AWG	24 ... 14
Tightening torque	0.5 Nm

## Dimensions

Width	6.2 mm
Height	80 mm
Depth	56 mm

## Environmental and real-life conditions

### Ambient conditions

Ambient temperature (operation)	-20 °C ... 60 °C
Ambient temperature (storage/transport)	-20 °C ... 70 °C

## Standards and regulations

### Standards/regulations

Standards/regulations	IEC 60947-5-1
-----------------------	---------------

## Mounting

Mounting type	DIN rail mounting
Assembly instructions	in rows with zero spacing
Mounting position	any

# DEK-OV- 12DC/ 24DC/ 3 - Solid-state relay terminal block

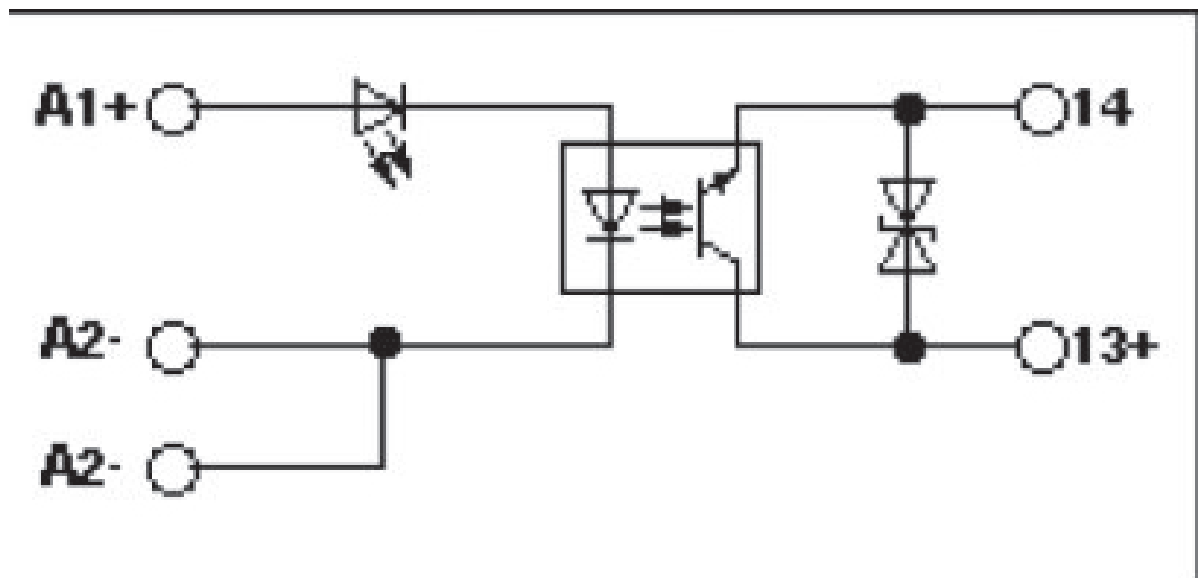


2941387

<https://www.phoenixcontact.com/us/products/2941387>

## Drawings

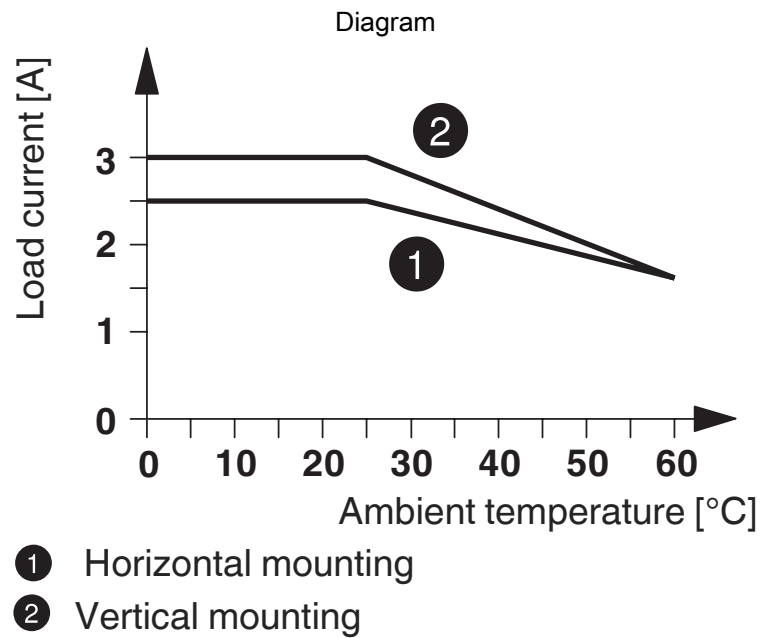
### Circuit diagram



# DEK-OV- 12DC/ 24DC/ 3 - Solid-state relay terminal block

2941387

<https://www.phoenixcontact.com/us/products/2941387>



# DEK-OV- 12DC/ 24DC/ 3 - Solid-state relay terminal block



2941387

<https://www.phoenixcontact.com/us/products/2941387>

## Approvals

📄 To download certificates, visit the product detail page: <https://www.phoenixcontact.com/us/products/2941387>



**EAC**

Approval ID: RU C-DE.A\*30.B.01742

# DEK-OV- 12DC/ 24DC/ 3 - Solid-state relay terminal block



2941387

<https://www.phoenixcontact.com/us/products/2941387>

## Classifications

### ECLASS

ECLASS-11.0	27371604
ECLASS-12.0	27371604
ECLASS-13.0	27371604

### ETIM

ETIM 8.0	EC001504
----------	----------

### UNSPSC

UNSPSC 21.0	39122300
-------------	----------

2941387  
<https://www.phoenixcontact.com/us/products/2941387>

Environmental product compliance

REACH SVHC	Lead 7439-92-1
	Hexahydromethylphthalic anhydride
China RoHS	Environmentally Friendly Use Period = 50 years
	For information on hazardous substances, refer to the manufacturer's declaration available under "Downloads"



# DEK-OV- 12DC/ 24DC/ 3 - Solid-state relay terminal block



2941387

<https://www.phoenixcontact.com/us/products/2941387>

## Accessories

**i** Note: Applying some accessories below might limit this product.

### EB 2- DIK RD - Insertion bridge

2716693

<https://www.phoenixcontact.com/us/products/2716693>



Insertion bridge, pitch: 6.15 mm, number of positions: 2, color: red

**i** Max. current carrying capacity: 26 A

---

### EB 3- DIK RD - Insertion bridge

2716745

<https://www.phoenixcontact.com/us/products/2716745>



Insertion bridge, pitch: 6.15 mm, number of positions: 3, color: red

**i** Max. current carrying capacity: 26 A

# DEK-OV- 12DC/ 24DC/ 3 - Solid-state relay terminal block



2941387

<https://www.phoenixcontact.com/us/products/2941387>


## EB 4- DIK RD - Insertion bridge

2716758

<https://www.phoenixcontact.com/us/products/2716758>

Insertion bridge, pitch: 6.15 mm, number of positions: 4, color: red



 Max. current carrying capacity: 26 A

---


## EB 5- DIK RD - Insertion bridge

2716761

<https://www.phoenixcontact.com/us/products/2716761>

Insertion bridge, pitch: 6.15 mm, number of positions: 5, color: red



 Max. current carrying capacity: 26 A

# DEK-OV- 12DC/ 24DC/ 3 - Solid-state relay terminal block



2941387

<https://www.phoenixcontact.com/us/products/2941387>

## EB 10- DIK RD - Insertion bridge

2716774

<https://www.phoenixcontact.com/us/products/2716774>

Insertion bridge, pitch: 6.15 mm, number of positions: 10, color: red



 Max. current carrying capacity: 26 A

---

## EB 80- DIK RD - Insertion bridge

2715953

<https://www.phoenixcontact.com/us/products/2715953>

Insertion bridge, pitch: 6.2 mm, number of positions: 80, color: red



 Max. current carrying capacity: 26 A

# DEK-OV- 12DC/ 24DC/ 3 - Solid-state relay terminal block



2941387

<https://www.phoenixcontact.com/us/products/2941387>

## EB 5- DIK BU - Insertion bridge

2716677

<https://www.phoenixcontact.com/us/products/2716677>

Insertion bridge, pitch: 6.15 mm, number of positions: 5, color: blue



 Max. current carrying capacity: 26 A

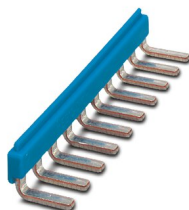
---

## EB 10- DIK BU - Insertion bridge

2716680

<https://www.phoenixcontact.com/us/products/2716680>

Insertion bridge, pitch: 6.15 mm, number of positions: 10, color: blue



 Max. current carrying capacity: 26 A

# DEK-OV- 12DC/ 24DC/ 3 - Solid-state relay terminal block



2941387

<https://www.phoenixcontact.com/us/products/2941387>


## EB 80- DIK BU - Insertion bridge

2715940

<https://www.phoenixcontact.com/us/products/2715940>

Insertion bridge, pitch: 6.2 mm, number of positions: 80, color: blue



 Max. current carrying capacity: 26 A

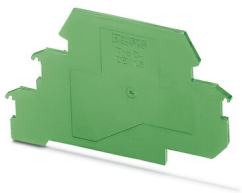
---

## D-DEK 1,5 GN - Separating plate

2716949

<https://www.phoenixcontact.com/us/products/2716949>

Cover for setting the end of a terminal row, color: green



# DEK-OV- 12DC/ 24DC/ 3 - Solid-state relay terminal block



2941387

<https://www.phoenixcontact.com/us/products/2941387>

## ZB 6:UNBEDRUCKT - Zack marker strip

1051003

<https://www.phoenixcontact.com/us/products/1051003>



Zack marker strip, Strip, white, unlabeled, can be labeled with: PLOTMARK, CMS-P1-PLOTTER, mounting type: snapped, for terminal block width: 6.2 mm, lettering field size: 6.15 x 10.5 mm, Number of individual labels: 10

---

## ZB 6,LGS:FORTL.ZAHLEN - Zack marker strip

1051016

<https://www.phoenixcontact.com/us/products/1051016>



Zack marker strip, Strip, white, labeled, can be labeled with: CMS-P1-PLOTTER, printed horizontally: consecutive numbers 1 ... 10, 11 ... 20, etc. up to 491 ... 500, mounting type: snapped, for terminal block width: 6.2 mm, lettering field size: 6.15 x 10.5 mm, Number of individual labels: 10

# DEK-OV- 12DC/ 24DC/ 3 - Solid-state relay terminal block



2941387

<https://www.phoenixcontact.com/us/products/2941387>

## ZB 6/WH-100:UNBEDRUCKT - Zack marker strip

5060935

<https://www.phoenixcontact.com/us/products/5060935>



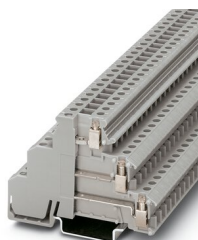
Zack marker strip, Strip, white, unlabeled, can be labeled with: PLOTMARK, CMS-P1-PLOTTER, mounting type: snapped, for terminal block width: 6.2 mm, lettering field size: 6.15 x 10.5 mm, Number of individual labels: 1000

---

## DIKD 1,5 - Sensor/actuator terminal block

2715979

<https://www.phoenixcontact.com/us/products/2715979>



Sensor/actuator terminal block, nom. voltage: 250 V, nominal current: 24 A, connection method: Screw connection, 1st, 2nd and 3rd level, Rated cross section: 2.5 mm<sup>2</sup>, cross section: 0.2 mm<sup>2</sup> - 4 mm<sup>2</sup>, mounting type: NS 35/7,5, NS 35/15, color: gray

---

Phoenix Contact 2023 © - all rights reserved  
<https://www.phoenixcontact.com>

Phoenix Contact USA  
586 Fulling Mill Road  
Middletown, PA 17057, United States  
(+717) 944-1300  
[info@phoenixcon.com](mailto:info@phoenixcon.com)