

DEK-REL- 5/I/1 - Relay Module



2941183

<https://www.phoenixcontact.com/us/products/2941183>

Please be informed that the data shown in this PDF document is generated from our online catalog. Please find the complete data in the user documentation. Our general terms of use for downloads are valid.



Relay terminal block, with soldered-in miniature relays, contact (AgNi+Au): small to medium loads, 1 N/O contact, input voltage 5 V AC/DC, for assembly on NS 35/7.5, terminal width 6.2 mm

Your advantages

- Reduced costs as N terminal block is no longer required
- Up to 73 % more space
- Wiring reduced to a minimum
- 2-layer contact with hard gold plating for universal applications from 1 mA to 5 A continuous current
- 2 kV_{rms} electrical isolation between input and output
- Integrated input circuit

Commercial data

Item number	2941183
Packing unit	1 pc
Minimum order quantity	1 pc
Sales key	C460
Product key	CK6151
Catalog page	Page 440 (C-5-2019)
GTIN	4017918080334
Weight per piece (including packing)	22.46 g
Weight per piece (excluding packing)	22.46 g
Customs tariff number	85364190
Country of origin	CN

DEK-REL- 5/I/1 - Relay Module



2941183

<https://www.phoenixcontact.com/us/products/2941183>

Technical data

Notes

General	Use of EB 80-DIK... bridges in the DEK terminal blocks: Absorption of humidity from the ambient air as well as an unfavorable tolerance between a larger number of DEK terminal blocks and the EB 80-DIK... bridge may cause (minor) expansion of the DEK housing. When the EB 80-DIK... bridges are used, therefore, it is recommended that these be disconnected after about 10 to 12 DEK terminal blocks and a wire bridge to the next DEK terminal block be inserted in their place.
---------	---

Product properties

Product type	Relay Module
Product family	DEK
Application	Output function
Operating mode	100% operating factor
Mechanical service life	approx. 2×10^7 cycles

Insulation characteristics

Insulation	Basic insulation
------------	------------------

Insulation characteristics

Insulation	Basic insulation
Overvoltage category	III
Pollution degree	2

Electrical properties

Maximum power dissipation for nominal condition	0.12 W
Test voltage (Winding/contact)	2 kV AC (50 Hz, 1 min., winding/contact)

Input data

Coil side

Nominal input voltage U_N	5 V AC/DC
Input voltage range	4.5 V AC/DC ... 5.5 V AC/DC (20 °C)
Drive and function	monostable
Drive (polarity)	polarized
Typical input current at U_N	23 mA
Typical response time	8 ms
Typical release time	15 ms
Protective circuit	Bridge rectifier; Bridge rectifier
Operating voltage display	Yellow LED

Output data

Switching

Contact switching type	1 N/O contact
------------------------	---------------

DEK-REL- 5/I/1 - Relay Module

2941183

<https://www.phoenixcontact.com/us/products/2941183>



Type of switch contact	Double contact
Contact material	AgNi, hard gold-plated
Maximum switching voltage	250 V AC
	125 V DC
Minimum switching voltage	0.1 V
Limiting continuous current	3 A (5 A up to 35°C at 24 V DC)
Maximum inrush current	5 A
Min. switching current	1 mA
Interrupting rating (ohmic load) max.	72 W (at 24 V DC)
	60 W (at 48 V DC)
	50 W (at 60 V DC)
	50 W (at 110 V DC)
	750 VA (for 250 V AC)
	120 W (at 24 V DC - up to 35°)

Connection data

Connection method	Screw connection
Stripping length	8 mm
Screw thread	M3
Conductor cross section rigid	0.2 mm² ... 2.5 mm²
Conductor cross section flexible	0.2 mm² ... 2.5 mm²
Conductor cross section AWG	24 ... 14
Tightening torque	0.5 Nm

Dimensions

Width	6.2 mm
Height	80 mm
Depth	56 mm

Environmental and real-life conditions

Ambient conditions

Ambient temperature (operation)	-20 °C ... 50 °C
Ambient temperature (storage/transport)	-20 °C ... 70 °C

Standards and regulations

Standards/regulations	IEC 60947-5-1
-----------------------	---------------

Mounting

Mounting type	DIN rail mounting
Assembly instructions	in rows with zero spacing
Mounting position	any

DEK-REL- 5/I/1 - Relay Module

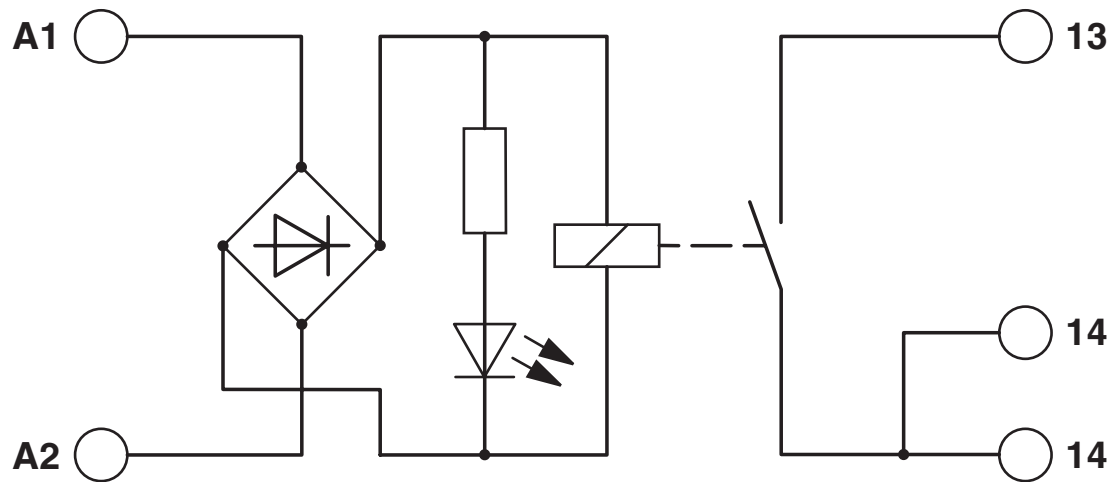
2941183

<https://www.phoenixcontact.com/us/products/2941183>



Drawings

Circuit diagram



DEK-REL- 5/I/1 - Relay Module



2941183

<https://www.phoenixcontact.com/us/products/2941183>

Approvals

🔗 To download certificates, visit the product detail page: <https://www.phoenixcontact.com/us/products/2941183>



EAC

Approval ID: TR_TS_D_00573_c



EAC

Approval ID: RU*C-DE.*08.B.00010

DEK-REL- 5/I/1 - Relay Module

2941183

<https://www.phoenixcontact.com/us/products/2941183>



Classifications

ECLASS

ECLASS-11.0	27371601
ECLASS-12.0	27371601
ECLASS-13.0	27371601

ETIM

ETIM 8.0	EC001437
----------	----------

UNSPSC

UNSPSC 21.0	39122300
-------------	----------

DEK-REL- 5/I/1 - Relay Module



2941183

<https://www.phoenixcontact.com/us/products/2941183>

Environmental product compliance

REACH SVHC	Lead 7439-92-1
China RoHS	Environmentally Friendly Use Period = 50 years
	For information on hazardous substances, refer to the manufacturer's declaration available under "Downloads"

DEK-REL- 5/I/1 - Relay Module

2941183

<https://www.phoenixcontact.com/us/products/2941183>



Accessories

i Note: Applying some accessories below might limit this product.

EB 80- DIK WH - Insertion bridge

2715788

<https://www.phoenixcontact.com/us/products/2715788>



Insertion bridge, pitch: 6.15 mm, number of positions: 80, color: white

i Max. current carrying capacity: 26 A

EB 80- DIK RD - Insertion bridge

2715953

<https://www.phoenixcontact.com/us/products/2715953>



Insertion bridge, pitch: 6.2 mm, number of positions: 80, color: red

i Max. current carrying capacity: 26 A

DEK-REL- 5/I/1 - Relay Module

2941183

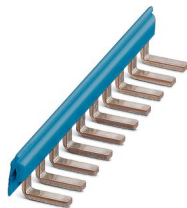
<https://www.phoenixcontact.com/us/products/2941183>




EB 80- DIK BU - Insertion bridge

2715940

<https://www.phoenixcontact.com/us/products/2715940>



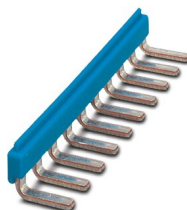
Insertion bridge, pitch: 6.2 mm, number of positions: 80, color: blue

 Max. current carrying capacity: 26 A

EB 10- DIK BU - Insertion bridge

2716680

<https://www.phoenixcontact.com/us/products/2716680>



Insertion bridge, pitch: 6.15 mm, number of positions: 10, color: blue

 Max. current carrying capacity: 26 A

DEK-REL- 5/I/1 - Relay Module

2941183

<https://www.phoenixcontact.com/us/products/2941183>




EB 5- DIK BU - Insertion bridge

2716677

<https://www.phoenixcontact.com/us/products/2716677>

Insertion bridge, pitch: 6.15 mm, number of positions: 5, color: blue



 Max. current carrying capacity: 26 A

EB 10- DIK RD - Insertion bridge

2716774

<https://www.phoenixcontact.com/us/products/2716774>

Insertion bridge, pitch: 6.15 mm, number of positions: 10, color: red



 Max. current carrying capacity: 26 A

DEK-REL- 5/I/1 - Relay Module

2941183

<https://www.phoenixcontact.com/us/products/2941183>




EB 5- DIK RD - Insertion bridge

2716761

<https://www.phoenixcontact.com/us/products/2716761>



Insertion bridge, pitch: 6.15 mm, number of positions: 5, color: red

 Max. current carrying capacity: 26 A

EB 4- DIK RD - Insertion bridge

2716758

<https://www.phoenixcontact.com/us/products/2716758>



Insertion bridge, pitch: 6.15 mm, number of positions: 4, color: red

 Max. current carrying capacity: 26 A

DEK-REL- 5/I/1 - Relay Module

2941183

<https://www.phoenixcontact.com/us/products/2941183>




EB 3- DIK RD - Insertion bridge

2716745

<https://www.phoenixcontact.com/us/products/2716745>

Insertion bridge, pitch: 6.15 mm, number of positions: 3, color: red



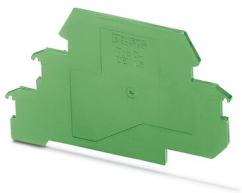
 Max. current carrying capacity: 26 A

D-DEK 1,5 GN - Separating plate

2716949

<https://www.phoenixcontact.com/us/products/2716949>

Cover for setting the end of a terminal row, color: green



DEK-REL- 5/I/1 - Relay Module

2941183

<https://www.phoenixcontact.com/us/products/2941183>



ZB 6:UNBEDRUCKT - Zack marker strip

1051003

<https://www.phoenixcontact.com/us/products/1051003>



Zack marker strip, Strip, white, unlabeled, can be labeled with: PLOTMARK, CMS-P1-PLOTTER, mounting type: snapped, for terminal block width: 6.2 mm, lettering field size: 6.15 x 10.5 mm, Number of individual labels: 10

ZB 6,LGS:FORTL.ZAHLEN - Zack marker strip

1051016

<https://www.phoenixcontact.com/us/products/1051016>



Zack marker strip, Strip, white, labeled, can be labeled with: CMS-P1-PLOTTER, printed horizontally: consecutive numbers 1 ... 10, 11 ... 20, etc. up to 491 ... 500, mounting type: snapped, for terminal block width: 6.2 mm, lettering field size: 6.15 x 10.5 mm, Number of individual labels: 10

DEK-REL- 5/I/1 - Relay Module

2941183

<https://www.phoenixcontact.com/us/products/2941183>



ZB 6/WH-100:UNBEDRUCKT - Zack marker strip

5060935

<https://www.phoenixcontact.com/us/products/5060935>

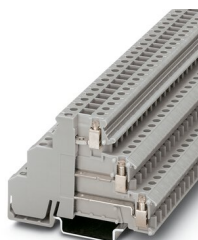


Zack marker strip, Strip, white, unlabeled, can be labeled with: PLOTMARK, CMS-P1-PLOTTER, mounting type: snapped, for terminal block width: 6.2 mm, lettering field size: 6.15 x 10.5 mm, Number of individual labels: 1000

DIKD 1,5 - Sensor/actuator terminal block

2715979

<https://www.phoenixcontact.com/us/products/2715979>



Sensor/actuator terminal block, nom. voltage: 250 V, nominal current: 24 A, connection method: Screw connection, 1st, 2nd and 3rd level, Rated cross section: 2.5 mm², cross section: 0.2 mm² - 4 mm², mounting type: NS 35/7,5, NS 35/15, color: gray

Phoenix Contact 2023 © - all rights reserved
<https://www.phoenixcontact.com>

Phoenix Contact USA
586 Fulling Mill Road
Middletown, PA 17057, United States
(+717) 944-1300
info@phoenixcon.com