

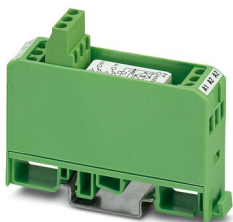
EMG 17-REL/KSR-120/21-21-LC - Relay Module



2940427

<https://www.phoenixcontact.com/us/products/2940427>

Please be informed that the data shown in this PDF document is generated from our online catalog. Please find the complete data in the user documentation. Our general terms of use for downloads are valid.



Relay module, with soldered-in miniature switching relay, contact (AgNi): medium to large loads, 2 changeover contacts, input voltage 120 V AC/DC

Your advantages

- Safe isolation according to DIN EN 50178 between coil and contact
- Integrated input circuit and interference suppression circuit

Commercial data

Item number	2940427
Packing unit	1 pc
Minimum order quantity	1 pc
Sales key	C460
Product key	CK6145
Catalog page	Page 135 (IF-2011)
GTIN	4017918080099
Weight per piece (including packing)	58.71 g
Weight per piece (excluding packing)	56.46 g
Customs tariff number	85364900
Country of origin	DE

Technical data

Notes

Utilization restriction

EMC note	EMC: class A product, see manufacturer's declaration in the download area
----------	---

Product properties

Product type	Relay Module
Product family	EMG
Application	Universal
Operating mode	100% operating factor
Mechanical service life	approx. 5×10^7 cycles

Insulation characteristics

Insulation	Basic insulation
	Safe isolation, reinforced insulation, and 6 kV between input circuit and output contact current paths

Insulation characteristics: Air clearances and creepage distances between the power circuits

Insulation	Basic insulation
	Safe isolation, reinforced insulation, and 6 kV between input circuit and output contact current paths
Overvoltage category	II
Pollution degree	2

Insulation characteristics: Air clearances and creepage distances between input and contact circuit (or output contact current path)

Insulation	Safe isolation, reinforced insulation
Overvoltage category	III
Pollution degree	2

Electrical properties

Maximum power dissipation for nominal condition	0.72 W
Test voltage (Winding/contact)	4 kV AC (50 Hz, 1 min., winding/contact)
Test voltage (Contact/contact)	1 kV AC (50 Hz, 1 min., changeover contact/changeover contact)

Air clearances and creepage distances between the power circuits

Rated insulation voltage	260 V AC
Rated surge voltage	2.3 kV

Air clearances and creepage distances between input and contact circuit (or output contact current path)

Rated insulation voltage	260 V AC
Rated surge voltage	6 kV

Input data

Coil side

EMG 17-REL/KSR-120/21-21-LC - Relay Module



2940427

<https://www.phoenixcontact.com/us/products/2940427>

Nominal input voltage U_N	120 V AC/DC
Input voltage range	96 V AC/DC ... 132 V AC/DC (20 °C)
Drive and function	monostable
Drive (polarity)	polarized
Typical input current at U_N	6 mA
Typical response time	8 ms
Typical release time	10 ms
Protective circuit	Bridge rectifier; Bridge rectifier
Operating voltage display	Yellow LED

Output data

Switching

Contact switching type	2 changeover contacts
Type of switch contact	Single contact
Contact material	AgNi
Maximum switching voltage	250 V AC/DC
Limiting continuous current	5 A
Maximum inrush current	6 A
Interrupting rating (ohmic load) max.	120 W (at 24 V DC)
	95 W (at 48 V DC)
	60 W (at 60 V DC)
	40 W (at 110 V DC)
	55 W (at 220 V DC)
	1250 VA (for 250 V AC)

Connection data

Coil side

Connection method	Screw connection
Stripping length	8 mm
Screw thread	M3
Conductor cross section rigid	0.2 mm ² ... 4 mm ²
Conductor cross section flexible	0.2 mm ² ... 2.5 mm ²
Conductor cross section AWG	24 ... 12

Contact side

Connection method	Screw connection
Stripping length	8 mm
Screw thread	M3
Conductor cross section rigid	0.2 mm ² ... 4 mm ²
Conductor cross section flexible	0.2 mm ² ... 2.5 mm ²
Conductor cross section AWG	24 ... 12

Dimensions

Width	17.5 mm
-------	---------

EMG 17-REL/KSR-120/21-21-LC - Relay Module



2940427

<https://www.phoenixcontact.com/us/products/2940427>

Height	75 mm
Depth	62.5 mm

Environmental and real-life conditions

Ambient conditions

Ambient temperature (operation)	-20 °C ... 40 °C
Ambient temperature (storage/transport)	-20 °C ... 70 °C

Standards and regulations

Air clearances and creepage distances between the power circuits

Standards/regulations	EN 50178
-----------------------	----------

Air clearances and creepage distances between input and contact circuit (or output contact current path)

Standards/regulations	EN 50178
-----------------------	----------

Standards/regulations

Standards/regulations	EN 61810-1
-----------------------	------------

Mounting

Mounting type	DIN rail mounting
Assembly instructions	in rows with zero spacing
Mounting position	any

EMG 17-REL/KSR-120/21-21-LC - Relay Module

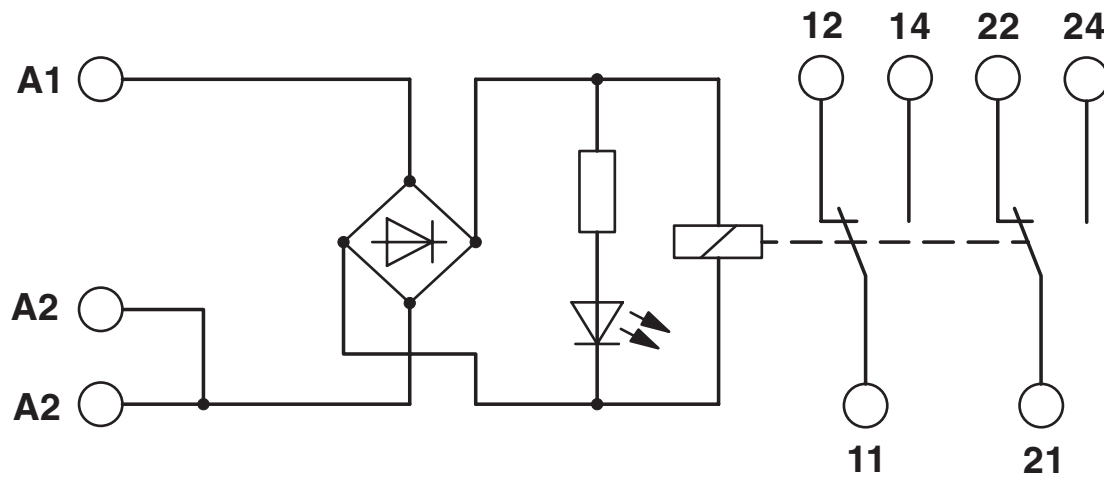


2940427

<https://www.phoenixcontact.com/us/products/2940427>

Drawings

Circuit diagram



EMG 17-REL/KSR-120/21-21-LC - Relay Module



2940427

<https://www.phoenixcontact.com/us/products/2940427>

Approvals

To download certificates, visit the product detail page: <https://www.phoenixcontact.com/us/products/2940427>



cUL Recognized

Approval ID: FILE E 238705



UL Recognized

Approval ID: FILE E 238705



EAC

Approval ID: TR_TS_D_00573_c



EAC

Approval ID: RU*C-DE.*08.B.00010

cULus Recognized

EMG 17-REL/KSR-120/21-21-LC - Relay Module



2940427

<https://www.phoenixcontact.com/us/products/2940427>

Classifications

ECLASS

ECLASS-11.0	27371601
ECLASS-12.0	27371601
ECLASS-13.0	27371601

ETIM

ETIM 8.0	EC001437
----------	----------

UNSPSC

UNSPSC 21.0	39122300
-------------	----------

EMG 17-REL/KSR-120/21-21-LC - Relay Module



2940427

<https://www.phoenixcontact.com/us/products/2940427>

Environmental product compliance

REACH SVHC	Lead 7439-92-1
China RoHS	Environmentally Friendly Use Period = 50 years
	For information on hazardous substances, refer to the manufacturer's declaration available under "Downloads"

EMG 17-REL/KSR-120/21-21-LC - Relay Module



2940427

<https://www.phoenixcontact.com/us/products/2940427>

Accessories

EMG-GKS 12 - Marking material

2947035

<https://www.phoenixcontact.com/us/products/2947035>



Device marking label, width: 12 mm, area: 12 x 8 mm, e.g. for EML(10x7) R adhesive marking material

Phoenix Contact 2023 © - all rights reserved
<https://www.phoenixcontact.com>

Phoenix Contact USA
586 Fulling Mill Road
Middletown, PA 17057, United States
(+717) 944-1300
info@phoenixcon.com