

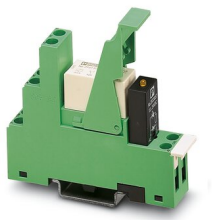
PR1-RSC3-LV-230AC/21 - Relay Module



2834355

<https://www.phoenixcontact.com/us/products/2834355>

Please be informed that the data shown in this PDF document is generated from our online catalog. Please find the complete data in the user documentation. Our general terms of use for downloads are valid.



Pre-assembled PR1-RSC... relay modules with screw connection, consisting of: relay base, power contact relay, plug-in display/interference suppression module, and retaining bracket.
Input voltage: 230 V AC, 1 changeover contact, 12 A

Your advantages

- Safe isolation between coil and contact side
- Operational reliability thanks to sealed relay
- Logical contact arrangement thanks to 1/3-level relay base

Commercial data

| | |
|--------------------------------------|--------------------------------|
| Item number | 2834355 |
| Packing unit | 1 pc |
| Minimum order quantity | 5 pc |
| Note | Made to order (non-returnable) |
| Sales key | C463 |
| Product key | CK6319 |
| Catalog page | Page 394 (C-7-2015) |
| GTIN | 4046356044240 |
| Weight per piece (including packing) | 68.8 g |
| Weight per piece (excluding packing) | 66.51 g |
| Customs tariff number | 85364900 |
| Country of origin | CN |

PR1-RSC3-LV-230AC/21 - Relay Module



2834355

<https://www.phoenixcontact.com/us/products/2834355>

Set consists of

PR1-BSC3/2X21 - Relay base

2833521

<https://www.phoenixcontact.com/us/products/2833521>



PR1... relay base, for miniature power relays or miniature switching relays with 1 or 2 changeover contacts or solid-state relays of the same design, 1/3-level version, screw connections, plug-in option for input/interference suppression modules

REL-MR-230AC/21HC - Single relay

2961422

<https://www.phoenixcontact.com/us/products/2961422>



Plug-in miniature power relay, with power contact for high continuous currents, 1 changeover contact, input voltage 230 V AC

PR1-RSC3-LV-230AC/21 - Relay Module



2834355

<https://www.phoenixcontact.com/us/products/2834355>

LV-120-230AC/110DC - Plug-in module

2833738

<https://www.phoenixcontact.com/us/products/2833738>



Plug-in module, with varistor and yellow LED, input voltage: 120 ... 230 V AC / 110 V DC $\pm 20\%$

EL1-P16 - Retaining bracket

2833547

<https://www.phoenixcontact.com/us/products/2833547>



Relay retaining bracket, with eject function and integrated equipment marking area (7.5 x 15 mm), to suit relay base PR1, for 16 mm high miniature power relay and solid-state relay

PR1-RSC3-LV-230AC/21 - Relay Module



2834355

<https://www.phoenixcontact.com/us/products/2834355>

MP 1 - Marker labels

2833631

<https://www.phoenixcontact.com/us/products/2833631>

Equipment marker, labeling surface 6 x 15 mm



PR1-RSC3-LV-230AC/21 - Relay Module



2834355

<https://www.phoenixcontact.com/us/products/2834355>

Technical data

Product properties

| | |
|-------------------------|---------------------------|
| Product type | Relay Module |
| Application | Universal |
| Operating mode | 100% operating factor |
| Mechanical service life | 3x 10 ⁷ cycles |

Insulation characteristics

| | |
|----------------------|-----|
| Overvoltage category | III |
| Pollution degree | 3 |

Electrical properties

| | |
|---|---------------------------------------|
| Service life electrical | see diagram |
| Maximum power dissipation for nominal condition | 1.38 W |
| Test voltage (Winding/contact) | 4 kV (50 Hz, 1 min., winding/contact) |

Input data

Coil side

| | |
|---|---------------------------|
| Nominal input voltage U _N | 230 V AC |
| Input voltage range | 179.4 V AC ... 356.5 V AC |
| Drive and function | monostable |
| Typical input current at U _N | 6 mA (at 50 Hz) |
| | 5.5 mA (At 60 Hz) |
| Typical response time | 3 ms ... 12 ms |
| Typical release time range | 2 ms ... 22 ms |
| Protective circuit | Varistor |
| Operating voltage display | Yellow LED |

Output data

Switching

| | |
|---------------------------------------|-----------------------|
| Contact switching type | 1 changeover contact |
| Type of switch contact | Single contact |
| Contact material | AgNi |
| Maximum switching voltage | 250 V AC/DC |
| Minimum switching voltage | 12 V (at 10 mA) |
| Limiting continuous current | 12 A |
| Maximum inrush current | 30 A (300 ms) |
| Min. switching current | 10 mA (at 12 V) |
| Interrupting rating (ohmic load) max. | 3000 W (for 250 V AC) |
| | 50 W (at 110 V DC) |
| | 80 W (at 220 V DC) |
| | 288 W (at 24 V DC) |

PR1-RSC3-LV-230AC/21 - Relay Module



2834355

<https://www.phoenixcontact.com/us/products/2834355>

| | |
|--------------------|------------------------|
| Switching capacity | at 440 V AC |
| | 58 W (at 48 V DC) |
| | 48 W (at 60 V DC) |
| | 2 A (at 24 V, DC13) |
| | 0.2 A (at 110 V, DC13) |
| | 0.2 A (at 250 V, DC13) |
| | 6 A (at 24 V, AC15) |
| | 6 A (at 120 V, AC15) |
| | 6 A (at 250 V, AC15) |

Connection data

Coil side

| | |
|----------------------------------|--|
| Connection method | Screw connection |
| Stripping length | 8 mm |
| Screw thread | M3 |
| Conductor cross section rigid | 0.14 mm ² ... 2.5 mm ² |
| Conductor cross section flexible | 0.14 mm ² ... 2.5 mm ² |
| Conductor cross section AWG | 26 ... 14 |

Contact side

| | |
|----------------------------------|--|
| Connection method | Screw connection |
| Stripping length | 8 mm |
| Screw thread | M3 |
| Conductor cross section rigid | 0.14 mm ² ... 2.5 mm ² |
| Conductor cross section flexible | 0.14 mm ² ... 2.5 mm ² |
| Conductor cross section AWG | 26 ... 14 |

Dimensions

| | |
|--------|---------|
| Width | 16 mm |
| Height | 78.5 mm |
| Depth | 71 mm |

Environmental and real-life conditions

Ambient conditions

| | |
|---|------------------|
| Ambient temperature (operation) | -25 °C ... 60 °C |
| Ambient temperature (storage/transport) | -25 °C ... 85 °C |

Standards and regulations

| | |
|-----------------------|-----------|
| Standards/regulations | IEC 60664 |
| | EN 50178 |

Mounting

| | |
|-----------------------|---------------------------|
| Mounting type | DIN rail mounting |
| Assembly instructions | in rows with zero spacing |

PR1-RSC3-LV-230AC/21 - Relay Module

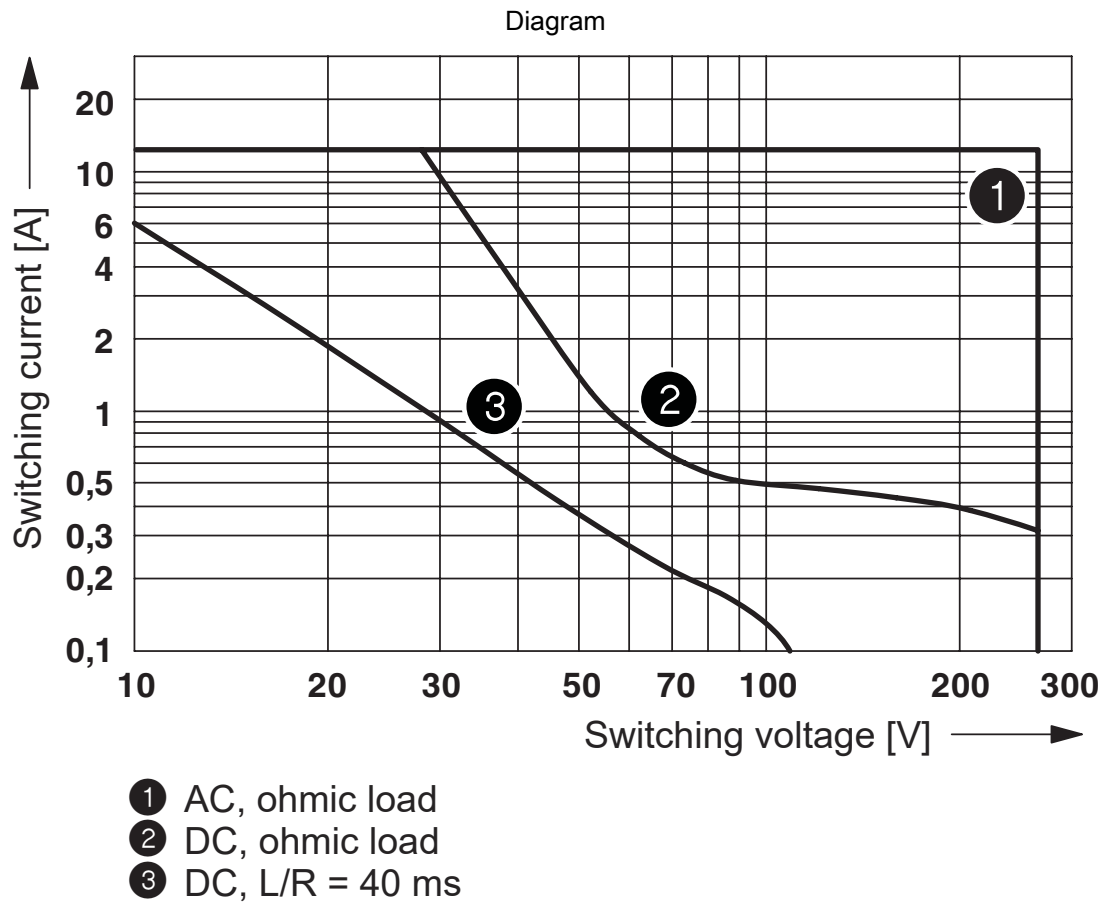
2834355

<https://www.phoenixcontact.com/us/products/2834355>



| | |
|-------------------|-----|
| Mounting position | any |
|-------------------|-----|

Drawings

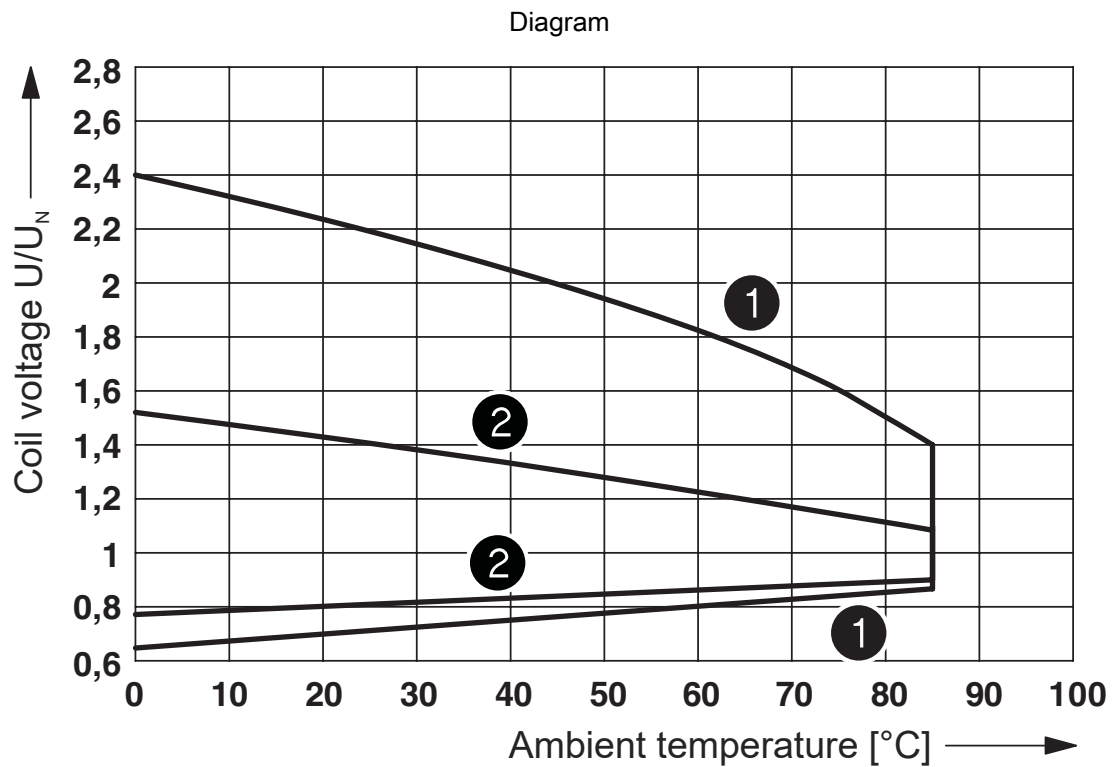


Interrupting rating

Diagram



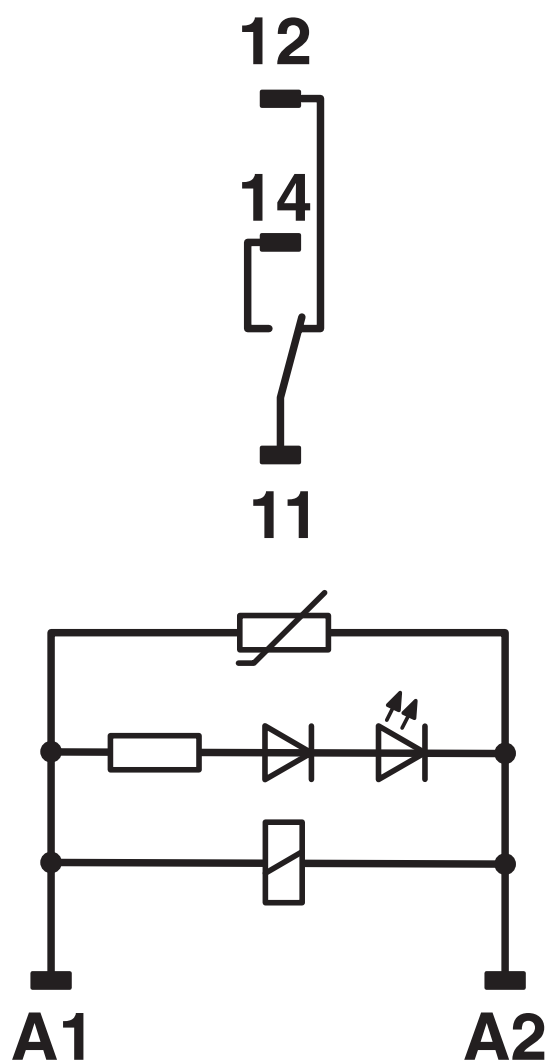
Service life reduction factor with various cos phi

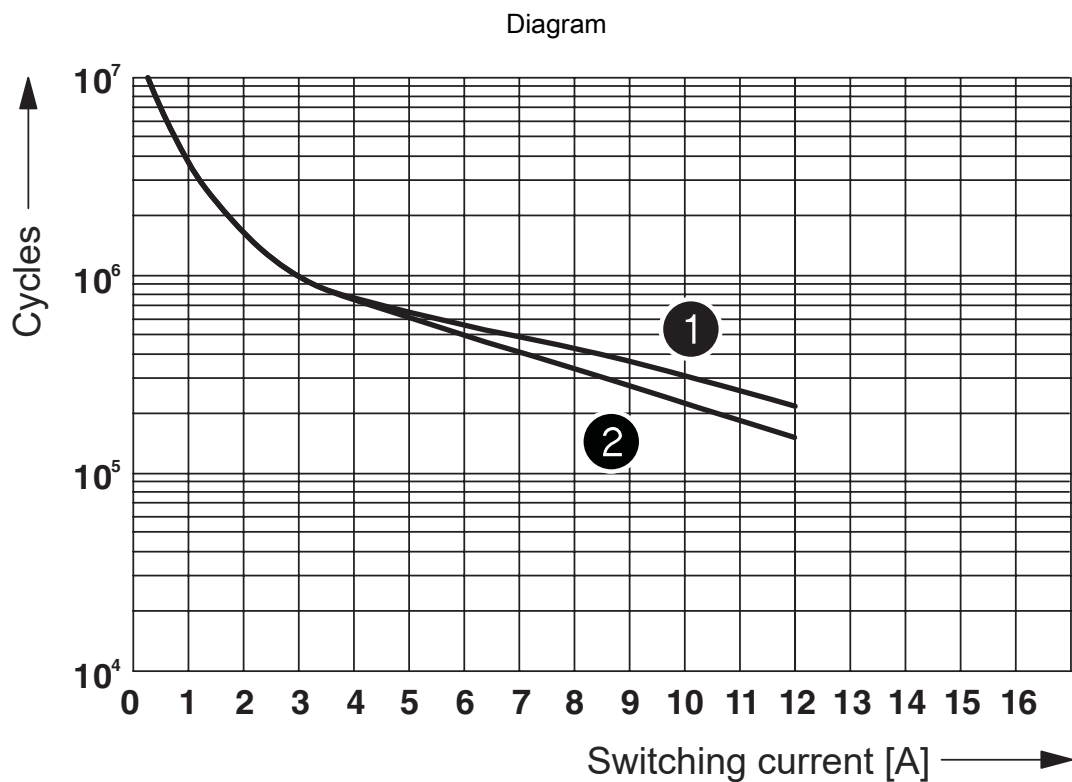


- ① DC coils
- ② AC coils

Operating voltage range of the relay

Circuit diagram





- ① 250 V AC, ohmic load (DC coils)
- ② 250 V AC, ohmic load (AC coils)

Electrical service life

PR1-RSC3-LV-230AC/21 - Relay Module



2834355

<https://www.phoenixcontact.com/us/products/2834355>

Classifications

ECLASS

| | |
|-------------|----------|
| ECLASS-11.0 | 27371601 |
|-------------|----------|

ETIM

| | |
|----------|----------|
| ETIM 7.0 | EC001437 |
|----------|----------|

UNSPSC

| | |
|-------------|----------|
| UNSPSC 21.0 | 39122334 |
|-------------|----------|

PR1-RSC3-LV-230AC/21 - Relay Module



2834355

<https://www.phoenixcontact.com/us/products/2834355>

Environmental product compliance

| | |
|------------|---|
| China RoHS | Environmentally friendly use period: unlimited = EFUP-e |
| | No hazardous substances above threshold values |

PR1-RSC3-LV-230AC/21 - Relay Module



2834355

<https://www.phoenixcontact.com/us/products/2834355>

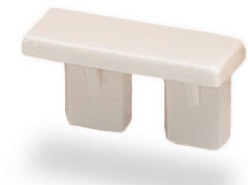
Accessories

MP 1 - Marker labels

2833631

<https://www.phoenixcontact.com/us/products/2833631>

Equipment marker, labeling surface 6 x 15 mm



EML (15X6)R YE - Label

0819288

<https://www.phoenixcontact.com/us/products/0819288>



Label, Roll, yellow, unlabeled, can be labeled with: THERMOMARK E.300 (D)/600 (D), THERMOMARK ROLL 2.0, THERMOMARK ROLL, THERMOMARK ROLL X1, THERMOMARK ROLLMASTER 300/600, THERMOMARK X1.2, mounting type: adhesive, lettering field size: 15 x 6 mm, Number of individual labels: 2500

PR1-RSC3-LV-230AC/21 - Relay Module



2834355

<https://www.phoenixcontact.com/us/products/2834355>

DB 50- 90 BU - Wire bridge

2821180

<https://www.phoenixcontact.com/us/products/2821180>

Flexible wire loop bridge, 50-pos., conductor cross-section: 0.5 mm^2 , loop length: 90 mm, ferrule length: 8 mm, color: blue



DB 50- 90 BK - Wire bridge

2820916

<https://www.phoenixcontact.com/us/products/2820916>

Flexible wire loop bridge, 50-pos., conductor cross-section: 0.5 mm^2 , loop length: 90 mm, ferrule length: 8 mm, color: black



PR1-RSC3-LV-230AC/21 - Relay Module



2834355

<https://www.phoenixcontact.com/us/products/2834355>

DB 50- 90 GY - Wire bridge

2820929

<https://www.phoenixcontact.com/us/products/2820929>

Flexible wire loop bridge, 50-pos., conductor cross-section: 0.5 mm², loop length: 90 mm, ferrule length: 8 mm, color: gray



Phoenix Contact 2023 © - all rights reserved

<https://www.phoenixcontact.com>

Phoenix Contact USA
586 Fulling Mill Road
Middletown, PA 17057, United States
(+717) 944-1300
info@phoenixcon.com