

ST-REL2-KG 24/2 - Relay connectors



2823670

<https://www.phoenixcontact.com/us/products/2823670>

Please be informed that the data shown in this PDF document is generated from our online catalog. Please find the complete data in the user documentation. Our general terms of use for downloads are valid.



Relay connector, fitted with miniature switching relay, contacts (AgNi): Medium to large loads, 1 N/C contact, 24 V AC/DC input voltage, with light indicator, can be plugged into basic terminal blocks

Commercial data

Item number	2823670
Packing unit	1 pc
Minimum order quantity	1 pc
Sales key	C460
Product key	CK6122
Catalog page	Page 87 (IF-2005)
GTIN	4017918077501
Weight per piece (including packing)	34.98 g
Weight per piece (excluding packing)	34.98 g
Customs tariff number	85364190
Country of origin	DE

ST-REL2-KG 24/2 - Relay connectors



2823670

<https://www.phoenixcontact.com/us/products/2823670>

Technical data

Product properties

Product type	Relay Module
Operating mode	100% operating factor
Mechanical service life	approx. 2×10^7 cycles

Electrical properties

Maximum power dissipation for nominal condition	0.5 W
Test voltage (Winding/contact)	2.5 kV AC (50 Hz, 1 min., winding/contact)

Input data

Coil side

Nominal input voltage U_N	24 V AC/DC
Input voltage range	19.2 V AC/DC ... 26.4 V AC/DC (20 °C)
Drive and function	monostable
Drive (polarity)	polarized
Typical input current at U_N	21 mA
Typical response time	7 ms (with DC)
Typical release time	11 ms (with DC)
Protective circuit	Bridge rectifier, varistor
Operating voltage display	yes

Output data

Switching

Contact switching type	1 N/C contact
Type of switch contact	Single contact
Contact material	AgNi
Maximum switching voltage	250 V AC/DC
Limiting continuous current	6 A
Maximum inrush current	8 A
Interrupting rating (ohmic load) max.	95 W (at 24 V DC)
	50 W (at 48 V DC)
	45 W (at 60 V DC)
	45 W (at 110 V DC)
	75 W (at 220 V DC)
	1500 VA (for 250 V AC)

Dimensions

Width	14.6 mm
Height	33 mm
Depth	66.5 mm

ST-REL2-KG 24/2 - Relay connectors



2823670

<https://www.phoenixcontact.com/us/products/2823670>

Environmental and real-life conditions

Ambient conditions

Ambient temperature (operation)	-20 °C ... 50 °C
Ambient temperature (storage/transport)	-20 °C ... 70 °C

Standards and regulations

Standards/regulations	DIN VDE 0110b, Gr. C for 250 V DC
	IEC 60255/DIN VDE 0435 (in relevant parts)
	DIN EN 50178/VDE 0160 (in relevant parts)
	EN 60730/DIN VDE 0631
	DIN VDE 0160 (in relevant parts)

Mounting

Mounting type	Plug-in mounting
---------------	------------------

ST-REL2-KG 24/2 - Relay connectors

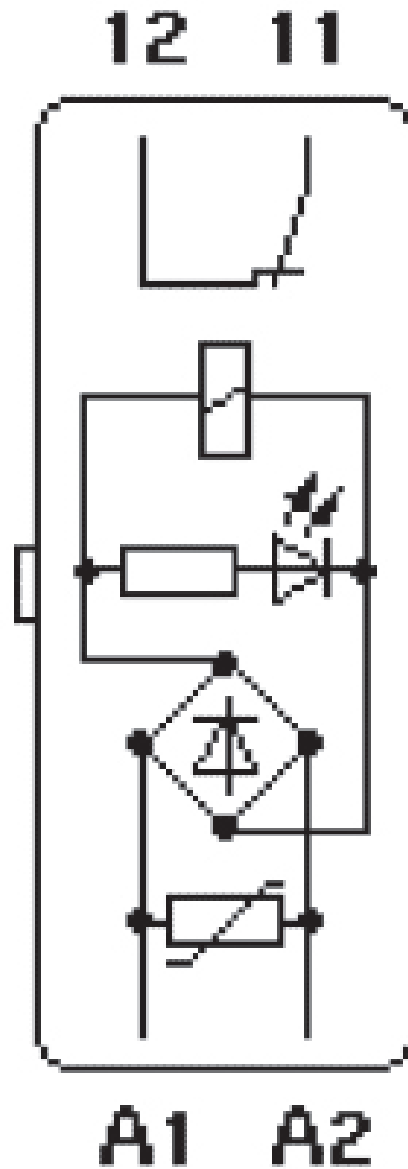
2823670

<https://www.phoenixcontact.com/us/products/2823670>



Drawings

Circuit diagram



ST-REL2-KG 24/2 - Relay connectors



2823670

<https://www.phoenixcontact.com/us/products/2823670>

Approvals

🔗 To download certificates, visit the product detail page: <https://www.phoenixcontact.com/us/products/2823670>



EAC

Approval ID: TR_TS_D_00573_c



EAC

Approval ID: RU*C-DE.*08.B.00010

ST-REL2-KG 24/2 - Relay connectors



2823670

<https://www.phoenixcontact.com/us/products/2823670>

Classifications

ECLASS

ECLASS-11.0	27371601
ECLASS-12.0	27371601
ECLASS-13.0	27371601

ETIM

ETIM 8.0	EC001437
----------	----------

UNSPSC

UNSPSC 21.0	39122300
-------------	----------

ST-REL2-KG 24/2 - Relay connectors



2823670

<https://www.phoenixcontact.com/us/products/2823670>

Environmental product compliance

REACH SVHC	Lead 7439-92-1
China RoHS	Environmentally Friendly Use Period = 50 years
	For information on hazardous substances, refer to the manufacturer's declaration available under "Downloads"

ST-REL2-KG 24/2 - Relay connectors

2823670

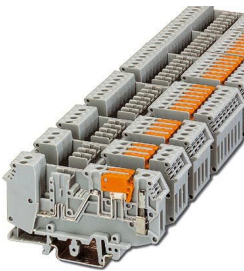
<https://www.phoenixcontact.com/us/products/2823670>

Mandatory accessories

URELG 2-PMTK - Basic terminal block

2820835

<https://www.phoenixcontact.com/us/products/2820835>



Basic termination blocks with test connection on both sides and knife disconnection for NS 32 and NS 35/7.5 DIN rail, with end cover, for ST-REL..., ST-OV... and ST-OE... plugs, 2-pos.

UDK-RELG 2 - Basic terminal block

2777030

<https://www.phoenixcontact.com/us/products/2777030>



Basic termination blocks with test connection on both sides and double connections with the same potential for NS 32 and NS 35/7.5 DIN rail, with end cover, for ST-REL..., ST-OV... and ST-OE... plugs, 2-pos.

ST-REL2-KG 24/2 - Relay connectors



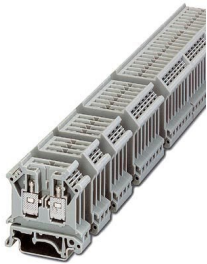
2823670

<https://www.phoenixcontact.com/us/products/2823670>

URELG 2 - Basic terminal block

2820262

<https://www.phoenixcontact.com/us/products/2820262>



Basic termination blocks with screw connection for NS 32 and NS 35/7.5 DIN rail, with end cover, for ST-REL..., ST-OV... and ST-OE... plugs, 2-pos.

ZFK-RELG 2 - Basic terminal block

2829904

<https://www.phoenixcontact.com/us/products/2829904>



Basic termination blocks with spring-cage connection for NS 35/7.5 DIN rail, with end cover, for ST-REL..., ST-OV... and ST-OE... plugs, 2-pos.

Accessories

ST-REL2-KG 24/2 - Relay connectors



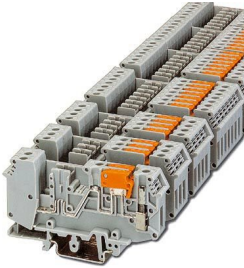
2823670

<https://www.phoenixcontact.com/us/products/2823670>

URELG 2-PMTK - Basic terminal block

2820835

<https://www.phoenixcontact.com/us/products/2820835>



Basic termination blocks with test connection on both sides and knife disconnection for NS 32 and NS 35/7.5 DIN rail, with end cover, for ST-REL..., ST-OV... and ST-OE... plugs, 2-pos.

UDK-RELG 2 - Basic terminal block

2777030

<https://www.phoenixcontact.com/us/products/2777030>



Basic termination blocks with test connection on both sides and double connections with the same potential for NS 32 and NS 35/7.5 DIN rail, with end cover, for ST-REL..., ST-OV... and ST-OE... plugs, 2-pos.

ST-REL2-KG 24/2 - Relay connectors



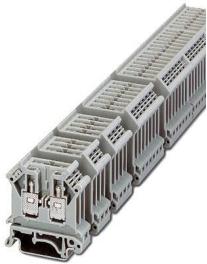
2823670

<https://www.phoenixcontact.com/us/products/2823670>

URELG 2 - Basic terminal block

2820262

<https://www.phoenixcontact.com/us/products/2820262>



Basic termination blocks with screw connection for NS 32 and NS 35/7.5 DIN rail, with end cover, for ST-REL..., ST-OV... and ST-OE... plugs, 2-pos.

ZFK-RELG 2 - Basic terminal block

2829904

<https://www.phoenixcontact.com/us/products/2829904>



Basic termination blocks with spring-cage connection for NS 35/7.5 DIN rail, with end cover, for ST-REL..., ST-OV... and ST-OE... plugs, 2-pos.

Phoenix Contact 2023 © - all rights reserved
<https://www.phoenixcontact.com>

Phoenix Contact USA
586 Fulling Mill Road
Middletown, PA 17057, United States
(+717) 944-1300
info@phoenixcon.com