

UEGM 25 - Electronic housing

2792015

<https://www.phoenixcontact.com/us/products/2792015>



Please be informed that the data shown in this PDF document is generated from our online catalog. Please find the complete data in the user documentation. Our general terms of use for downloads are valid.

Electronic housing, for PCB insertion, fully equipped with 3 screw or 6 tab connections per side



Commercial data

Item number	2792015
Packing unit	1 pc
Minimum order quantity	10 pc
Sales key	AC11
Product key	ACHCCB
Catalog page	Page 724 (C-1-2013)
GTIN	4017918072520
Weight per piece (including packing)	57.2 g
Weight per piece (excluding packing)	57.2 g
Customs tariff number	85369010
Country of origin	DE

UEGM 25 - Electronic housing

2792015

<https://www.phoenixcontact.com/us/products/2792015>

Technical data

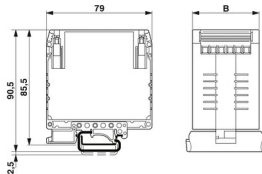
Product properties

Type	Connection system integrated, housing closed
Product type	Complete housing
Product family	UEGM
Number of positions	6
Pitch	5 mm
Number of rows	1
Type	Complete housing equipped with 3 screw connections per side
Housing type	Component housing
Housing series	UEGM
Pin layout	Linear pinning

Electrical properties

Nominal voltage U_N	500 V (Voltage and current values are affected by the configuration of the printed circuit board.)
Nominal current I_N	10 A

Dimensions

Dimensional drawing	
Width	25 mm
Installed height	85.5 mm
Height NS 35/7,5	85.5 mm
Depth	79 mm
Length	79 mm
Pitch	5 mm

Material specifications

Color	green
Flammability rating according to UL 94	V2
Surface characteristics	untreated
Housing material	Polyamide

Environmental and real-life conditions

Ambient conditions

Ambient temperature (operation)	-40 °C ... 105 °C
---------------------------------	-------------------

UEGM 25 - Electronic housing

2792015

<https://www.phoenixcontact.com/us/products/2792015>

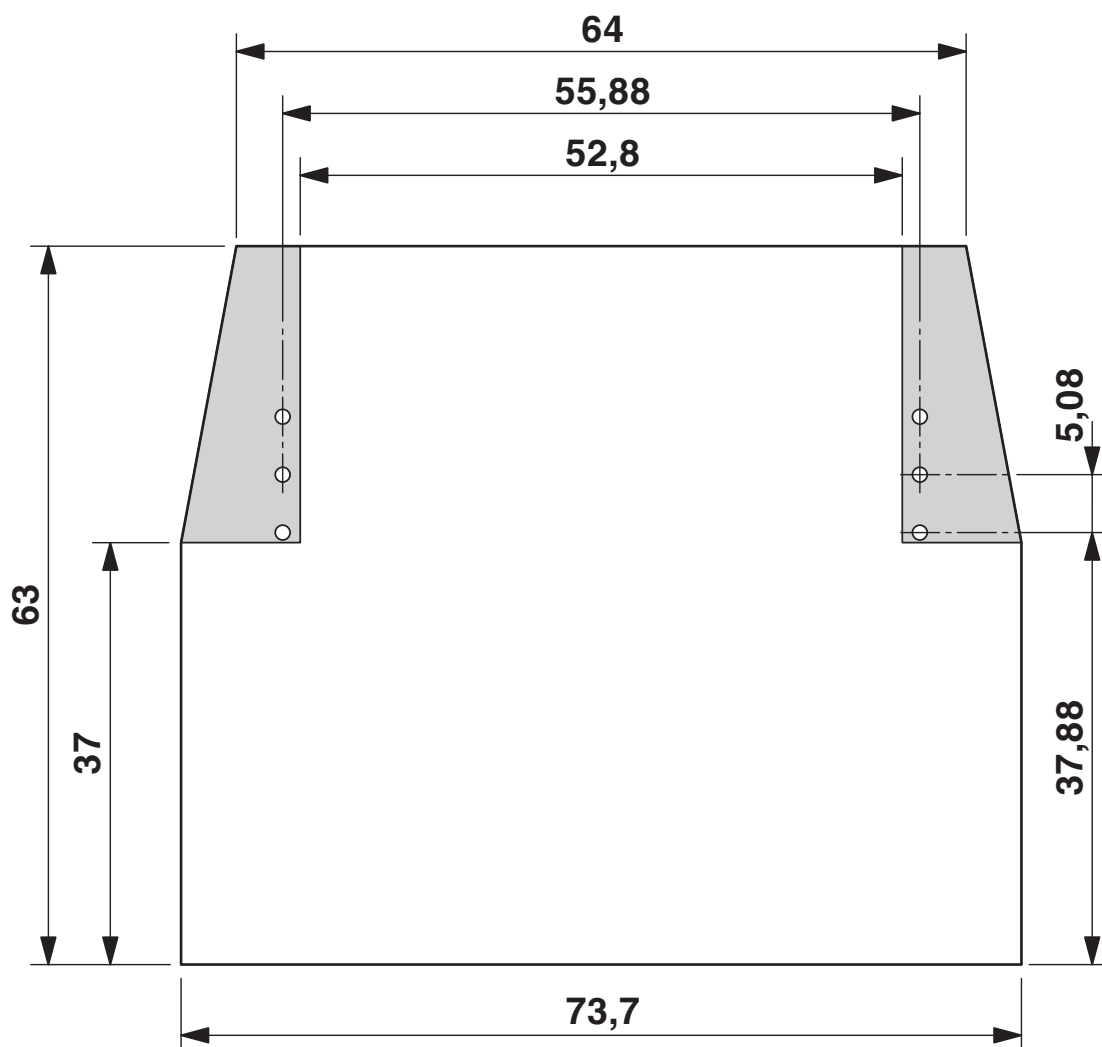


Mounting

Mounting type	DIN rail mounting
Pin layout	Linear pinning
Connection method	Screw connection

Drawings

Dimensional drawing



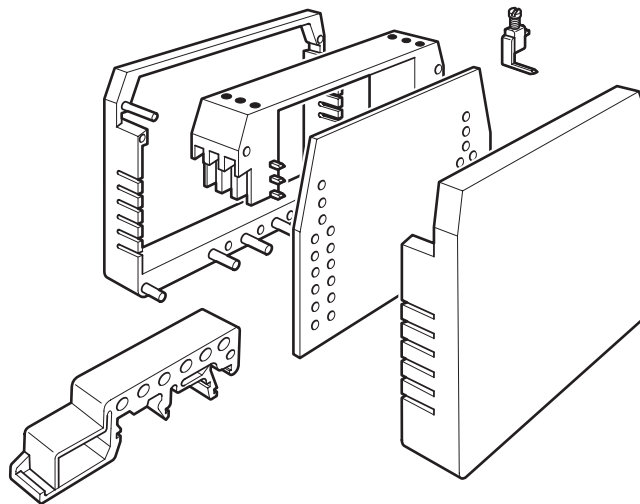
UEGM 25 - Electronic housing

2792015

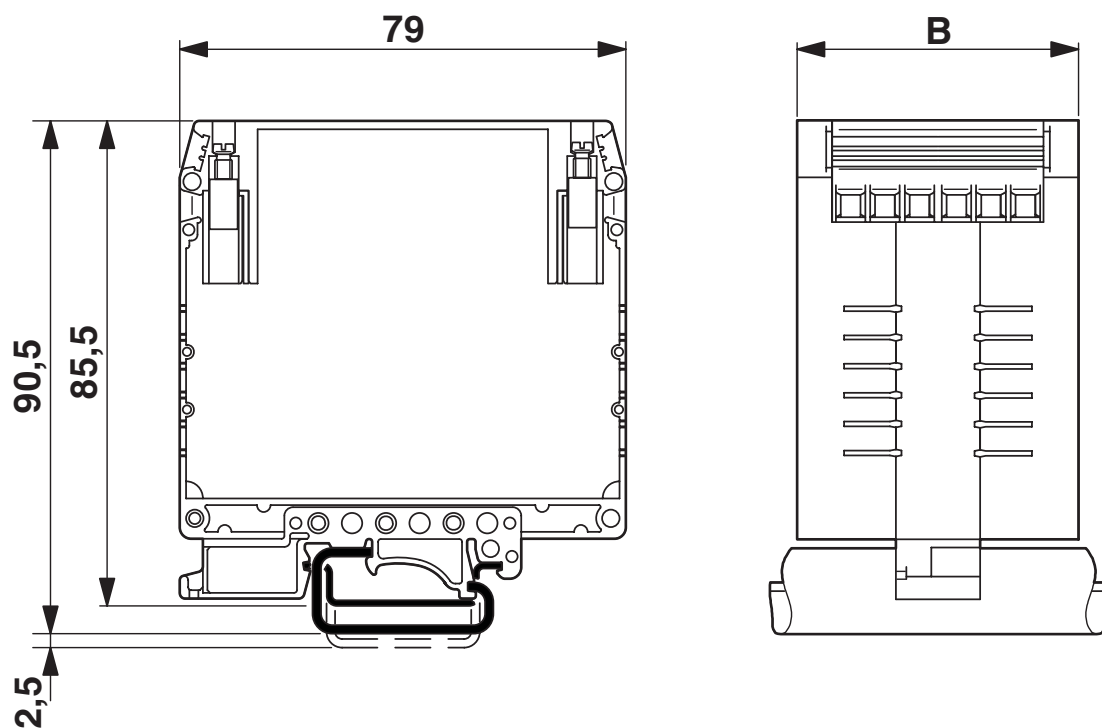
<https://www.phoenixcontact.com/us/products/2792015>



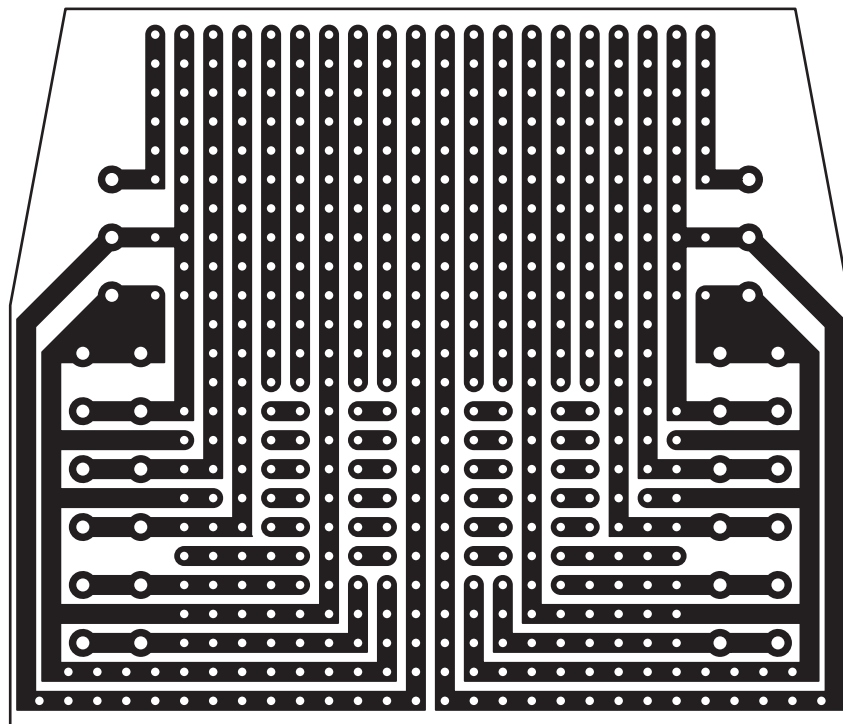
Exploded view



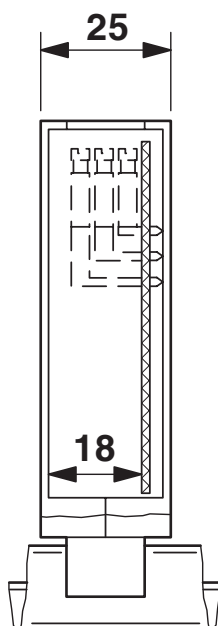
Dimensional drawing



Schematic diagram



Dimensional drawing



UEGM 25... und UEGM 27,5-SMD with 1 PCB, 6 positions or 12 positions (FS/FS)

UEGM 25 - Electronic housing



2792015

<https://www.phoenixcontact.com/us/products/2792015>

Approvals

To download certificates, visit the product detail page: <https://www.phoenixcontact.com/us/products/2792015>



EAC

Approval ID: B.01687



cULus Recognized

Approval ID: E60425-19770427

	Nominal voltage U_N	Nominal current I_N	Cross section AWG	Cross section mm^2
Use group B				
	300 V	10 A	30 - 12	-
Use group D				
	300 V	10 A	30 - 12	-

UEGM 25 - Electronic housing

2792015

<https://www.phoenixcontact.com/us/products/2792015>



Classifications

ECLASS

ECLASS-11.0	27182702
ECLASS-13.0	27190501

ETIM

ETIM 8.0	EC001031
----------	----------

UNSPSC

UNSPSC 21.0	31261500
-------------	----------

UEGM 25 - Electronic housing



2792015

<https://www.phoenixcontact.com/us/products/2792015>

Environmental product compliance

China RoHS	Environmentally friendly use period: unlimited = EFUP-e
	No hazardous substances above threshold values

UEGM 25 - Electronic housing

2792015

<https://www.phoenixcontact.com/us/products/2792015>



Accessories

DB 50- 90 GY - Wire bridge

2820929

<https://www.phoenixcontact.com/us/products/2820929>

Flexible wire loop bridge, 50-pos., conductor cross-section: 0.5 mm², loop length: 90 mm, ferrule length: 8 mm, color: gray



Phoenix Contact 2023 © - all rights reserved
<https://www.phoenixcontact.com>

Phoenix Contact USA
586 Fulling Mill Road
Middletown, PA 17057, United States
(+717) 944-1300
info@phoenixcon.com