

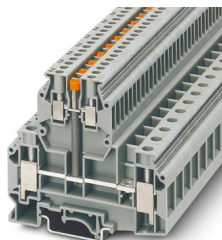
UKKB 10/2,5-PV - Double-level terminal block



2775485

<https://www.phoenixcontact.com/us/products/2775485>

Please be informed that the data shown in this PDF document is generated from our online catalog. Please find the complete data in the user documentation. Our general terms of use for downloads are valid.



Double-level terminal block, with equipotential bonder, nom. voltage: 500 V, nominal current: 57 A, connection method: Screw connection, Rated cross section: 10 mm², cross section: 0.5 mm² - 16 mm², connection method: Screw connection, 2nd level, Rated cross section: 2.5 mm², cross section: 0.2 mm² - 4 mm², mounting type: NS 35/7,5, NS 35/15, NS 32, color: gray

Your advantages

- Design width of just 10.2 mm

Commercial data

Item number	2775485
Packing unit	1 pc
Minimum order quantity	1 pc
Sales key	BE12
Product key	BE1214
Catalog page	Page 474 (C-1-2019)
GTIN	4017918068592
Weight per piece (including packing)	40.5 g
Weight per piece (excluding packing)	40.3 g
Customs tariff number	85369010
Country of origin	TR

UKKB 10/2,5-PV - Double-level terminal block



2775485

<https://www.phoenixcontact.com/us/products/2775485>

Technical data

Product properties

Product type	Multi-level terminal block
Number of connections	6
Number of rows	2

Insulation characteristics

Overvoltage category	III
Degree of pollution	3

Electrical properties

Rated surge voltage	6 kV
Maximum power dissipation for nominal condition	1.82 W

Connection data

Number of connections per level	2
Nominal cross section	10 mm ²

Level 1 above 1 below 1

Screw thread	M4
Note	Lower level
Tightening torque	1.2 ... 1.8 Nm
Stripping length	8 mm
Internal cylindrical gage	B6
Connection in acc. with standard	IEC 60947-7-1
Conductor cross section rigid	0.5 mm ² ... 16 mm ²
Cross section AWG	20 ... 6 (converted acc. to IEC)
Conductor cross section flexible	0.5 mm ² ... 10 mm ²
Conductor cross section, flexible [AWG]	20 ... 8 (converted acc. to IEC)
Conductor cross-section flexible (ferrule without plastic sleeve)	0.5 mm ² ... 10 mm ²
Flexible conductor cross section (ferrule with plastic sleeve)	0.5 mm ² ... 6 mm ²
2 conductors with same cross section, solid	0.5 mm ² ... 6 mm ²
2 conductors with same cross section, flexible	0.5 mm ² ... 4 mm ²
2 conductors with same cross section, flexible, with ferrule without plastic sleeve	0.5 mm ² ... 6 mm ²
2 conductors with the same cross section, flexible, with TWIN ferrule with plastic sleeve	0.5 mm ² ... 6 mm ²
Nominal current	57 A
Maximum load current	70 A (with 16 mm ² conductor cross section)
Nominal voltage	500 V
Nominal cross section	10 mm ²

2nd level

Screw thread	M3
--------------	----

UKKB 10/2,5-PV - Double-level terminal block



2775485

<https://www.phoenixcontact.com/us/products/2775485>

Note	upper level
Tightening torque	0.5 ... 0.8 Nm
Stripping length	8 mm
Internal cylindrical gage	A3
Connection in acc. with standard	IEC 60947-7-1
Conductor cross section rigid	0.2 mm² ... 4 mm²
Cross section AWG	24 ... 12 (converted acc. to IEC)
Conductor cross section flexible	0.2 mm² ... 2.5 mm²
Conductor cross-section flexible (ferrule without plastic sleeve)	0.25 mm² ... 2.5 mm²
Flexible conductor cross section (ferrule with plastic sleeve)	0.25 mm² ... 1.5 mm²
2 conductors with same cross section, solid	0.2 mm² ... 1.5 mm²
2 conductors with same cross section, flexible	0.2 mm² ... 1.5 mm²
2 conductors with same cross section, flexible, with ferrule without plastic sleeve	0.25 mm² ... 1 mm²
2 conductors with the same cross section, flexible, with TWIN ferrule with plastic sleeve	0.5 mm² ... 1.5 mm²
Nominal current	24 A
Maximum load current	32 A
Nominal voltage	500 V
Nominal cross section	2.5 mm²

Dimensions

Width	10.2 mm
Height	77.5 mm
Depth on NS 32	78 mm
Depth on NS 35/7,5	73 mm
Depth on NS 35/15	80.5 mm

Material specifications

Color	gray
Flammability rating according to UL 94	V0
Insulating material group	I
Insulating material	PA
Static insulating material application in cold	-60 °C
Temperature index of insulation material (DIN EN 60216-1 (VDE 0304-21))	130 °C
Relative insulation material temperature index (Elec., UL 746 B)	130 °C
Fire protection for rail vehicles (DIN EN 45545-2) R22	HL 1 - HL 3
Fire protection for rail vehicles (DIN EN 45545-2) R23	HL 1 - HL 3
Fire protection for rail vehicles (DIN EN 45545-2) R24	HL 1 - HL 3
Fire protection for rail vehicles (DIN EN 45545-2) R26	HL 1 - HL 3
Calorimetric heat release NFPA 130 (ASTM E 1354)	28 MJ/kg
Surface flammability NFPA 130 (ASTM E 162)	passed
Specific optical density of smoke NFPA 130 (ASTM E 662)	passed
Smoke gas toxicity NFPA 130 (SMP 800C)	passed

UKKB 10/2,5-PV - Double-level terminal block



2775485

<https://www.phoenixcontact.com/us/products/2775485>

Electrical tests

Surge voltage test

Test voltage setpoint	7.3 kV
Result	Test passed

Temperature-rise test

Requirement temperature-rise test	Increase in temperature ≤ 45 K
Result	Test passed
Short-time withstand current 10 mm ²	1.2 kA
Short-time withstand current 2.5 mm ²	0.3 kA
Result	Test passed

Power-frequency withstand voltage

Test voltage setpoint	1.89 kV
Result	Test passed

Mechanical properties

Mechanical data

Open side panel	Yes
-----------------	-----

Mechanical tests

Mechanical strength

Result	Test passed
--------	-------------

Attachment on the carrier

DIN rail/fixing support	NS 32/NS 35
Test force setpoint	5 N
Result	Test passed

Test for conductor damage and slackening

Rotation speed	10 rpm
Revolutions	135
Conductor cross section/weight	0.5 mm ² / 0.3 kg
	10 mm ² / 2 kg
	16 mm ² / 2.9 kg
Result	Test passed

Test for conductor damage and slackening

Rotation speed	10 rpm
Revolutions	135
Conductor cross section/weight	0.2 mm ² / 0.2 kg
	2.5 mm ² / 0.7 kg
	4 mm ² / 0.9 kg
Result	Test passed

UKKB 10/2,5-PV - Double-level terminal block



2775485

<https://www.phoenixcontact.com/us/products/2775485>

Environmental and real-life conditions

Needle-flame test

Time of exposure	30 s
Result	Test passed

Ambient conditions

Ambient temperature (operation)	-60 °C ... 105 °C (max. short-term operating temperature RTI Elec.)
Ambient temperature (storage/transport)	-25 °C ... 60 °C (for a short time, not exceeding 24 h, -60 °C to +70 °C)
Ambient temperature (assembly)	-5 °C ... 70 °C
Ambient temperature (actuation)	-5 °C ... 70 °C
Permissible humidity (storage/transport)	30 % ... 70 %

Standards and regulations

Connection in acc. with standard	IEC 60947-7-1
	IEC 60947-7-1

Mounting

Mounting type	NS 35/7,5
	NS 35/15
	NS 32

UKKB 10/2,5-PV - Double-level terminal block

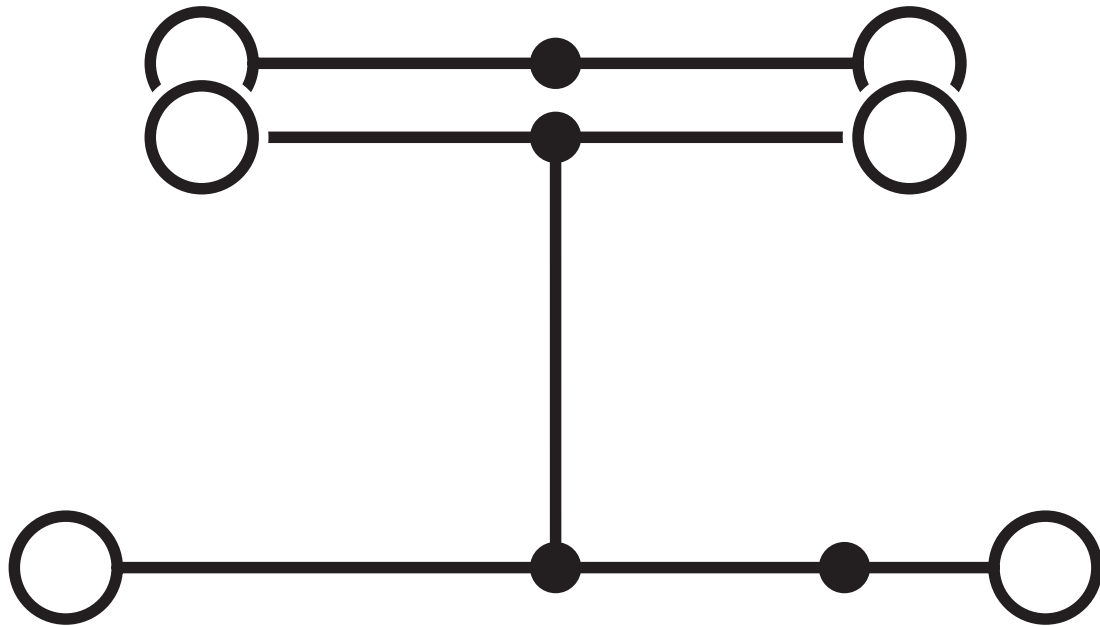
2775485

<https://www.phoenixcontact.com/us/products/2775485>



Drawings

Circuit diagram



UKKB 10/2,5-PV - Double-level terminal block




2775485


<https://www.phoenixcontact.com/us/products/2775485>

Approvals

To download certificates, visit the product detail page: <https://www.phoenixcontact.com/us/products/2775485>

 CSA Approval ID: 13631				
	Nominal voltage U_N	Nominal current I_N	Cross section AWG	Cross section mm^2
upper level	300 V	20 A	28 - 12	-
lower level	300 V	65 A	24 - 6	-

 EAC Approval ID: RU C-DE.BL08.B.00534				
---	--	--	--	--

 cULus Recognized Approval ID: E60425				
	Nominal voltage U_N	Nominal current I_N	Cross section AWG	Cross section mm^2
Use group B				
upper level	300 V	65 A	24 - 6	-
lower level	300 V	65 A	24 - 6	-
Use group C				
upper level	300 V	65 A	24 - 6	-
lower level	300 V	65 A	24 - 6	-
Use group D				
upper level	600 V	5 A	24 - 6	-
lower level	600 V	5 A	24 - 6	-

UKKB 10/2,5-PV - Double-level terminal block



2775485

<https://www.phoenixcontact.com/us/products/2775485>

Classifications

ECLASS

ECLASS-11.0	27141120
ECLASS-13.0	27250102

ETIM

ETIM 8.0	EC000897
----------	----------

UNSPSC

UNSPSC 21.0	39121400
-------------	----------

UKKB 10/2,5-PV - Double-level terminal block



2775485

<https://www.phoenixcontact.com/us/products/2775485>

Environmental product compliance

China RoHS	Environmentally friendly use period: unlimited = EFUP-e
	No hazardous substances above threshold values

UKKB 10/2,5-PV - Double-level terminal block



2775485

<https://www.phoenixcontact.com/us/products/2775485>

Accessories



Note: Applying some accessories below might limit this product.

IS-K 10 - Bridge bar isolator

1303337

<https://www.phoenixcontact.com/us/products/1303337>



Bridge bar isolator, color: gray

ISSBI 10-10 - Bridge

0301521

<https://www.phoenixcontact.com/us/products/0301521>



Bridge, pitch: 10 mm, number of positions: 10, color: silver



Max. current carrying capacity: 50 A

UKKB 10/2,5-PV - Double-level terminal block



2775485

<https://www.phoenixcontact.com/us/products/2775485>


KB- 10 - Chain bridge

0203205

<https://www.phoenixcontact.com/us/products/0203205>



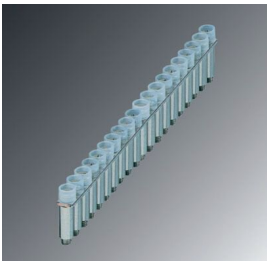
Chain bridge, pitch: 10 mm, number of positions: 1, color: silver

 Max. current carrying capacity: 70 A

FBRI 20-5 N - Fixed bridge

3000515

<https://www.phoenixcontact.com/us/products/3000515>



Fixed bridge, pitch: 5 mm, number of positions: 20, color: silver

UKKB 10/2,5-PV - Double-level terminal block

2775485

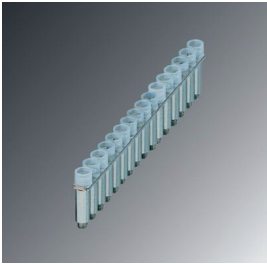
<https://www.phoenixcontact.com/us/products/2775485>



FBRI 16-5 N - Fixed bridge

3000476

<https://www.phoenixcontact.com/us/products/3000476>

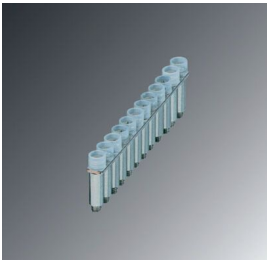


Fixed bridge, number of positions: 16, color: silver

FBRI 12-5 N - Fixed bridge

3000434

<https://www.phoenixcontact.com/us/products/3000434>



Fixed bridge, number of positions: 12, color: silver

UKKB 10/2,5-PV - Double-level terminal block

2775485

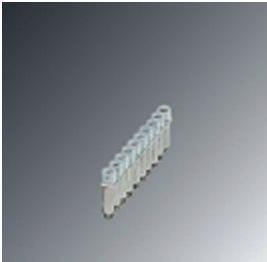
<https://www.phoenixcontact.com/us/products/2775485>



FBRI 10-5 N - Fixed bridge

2770642

<https://www.phoenixcontact.com/us/products/2770642>



Fixed bridge, pitch: 5.2 mm, number of positions: 10, color: silver

 Max. current carrying capacity: 26 A

FBI 2-10 - Fixed bridge

0203483

<https://www.phoenixcontact.com/us/products/0203483>



Fixed bridge, pitch: 10 mm, number of positions: 2, color: silver

UKKB 10/2,5-PV - Double-level terminal block

2775485

<https://www.phoenixcontact.com/us/products/2775485>




FBI 10-10 - Fixed bridge

0203276

<https://www.phoenixcontact.com/us/products/0203276>

Fixed bridge, pitch: 10 mm, number of positions: 10, color: silver

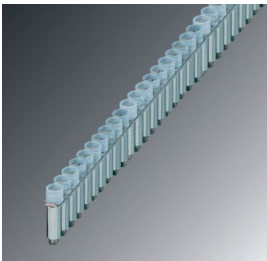


 Max. current carrying capacity: 70 A

FBRI 40-5 N - Fixed bridge

3006823

<https://www.phoenixcontact.com/us/products/3006823>



Fixed bridge, number of positions: 40, color: silver

UKKB 10/2,5-PV - Double-level terminal block

2775485

<https://www.phoenixcontact.com/us/products/2775485>

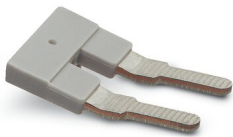


EB 2-10 - Insertion bridge

0203153

<https://www.phoenixcontact.com/us/products/0203153>

Insertion bridge, pitch: 10 mm, number of positions: 2, color: gray



EBL 3-5 - Insertion bridge

2303158

<https://www.phoenixcontact.com/us/products/2303158>

Insertion bridge, pitch: 5.2 mm, number of positions: 3, color: gray



UKKB 10/2,5-PV - Double-level terminal block



2775485

<https://www.phoenixcontact.com/us/products/2775485>

EBL 2- 5 - Insertion bridge

2303145

<https://www.phoenixcontact.com/us/products/2303145>

Insertion bridge, pitch: 5.2 mm, number of positions: 2, color: gray



EBL 10- 5 - Insertion bridge

2303132

<https://www.phoenixcontact.com/us/products/2303132>

Insertion bridge, pitch: 5.2 mm, number of positions: 10, color: gray



UKKB 10/2,5-PV - Double-level terminal block

2775485

<https://www.phoenixcontact.com/us/products/2775485>

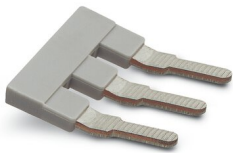


EB 3-10 - Insertion bridge

0203328

<https://www.phoenixcontact.com/us/products/0203328>

Insertion bridge, pitch: 10 mm, number of positions: 3, color: gray

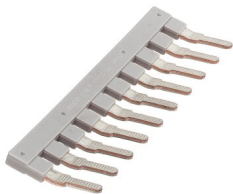


EB 10-10 - Insertion bridge

0203137

<https://www.phoenixcontact.com/us/products/0203137>

Insertion bridge, pitch: 10 mm, number of positions: 10, color: gray



UKKB 10/2,5-PV - Double-level terminal block



2775485

<https://www.phoenixcontact.com/us/products/2775485>

USBR 2-7 - Switching jumper

2303239

<https://www.phoenixcontact.com/us/products/2303239>



Switching jumper, pitch: 7 mm, number of positions: 2, color: silver

USBRJ 2-7 - Switching jumper

2305538

<https://www.phoenixcontact.com/us/products/2305538>



Switching jumper, number of positions: 2, color: silver

UKKB 10/2,5-PV - Double-level terminal block



2775485

<https://www.phoenixcontact.com/us/products/2775485>

SBRN 2-7 - Switching jumper

1413230

<https://www.phoenixcontact.com/us/products/1413230>



Switching jumper, pitch: 7 mm, number of positions: 2, color: silver

SB 2-10/15 - Switching jumper

0203234

<https://www.phoenixcontact.com/us/products/0203234>



Switching jumper, pitch: 15 mm, number of positions: 2, color: silver

UKKB 10/2,5-PV - Double-level terminal block



2775485

<https://www.phoenixcontact.com/us/products/2775485>

D-UKKB 10 - End cover

3001394

<https://www.phoenixcontact.com/us/products/3001394>



End cover, length: 77.5 mm, width: 1.5 mm, height: 77.5 mm, color: gray

KSS 5 - Short-circuit connector

2303543

<https://www.phoenixcontact.com/us/products/2303543>



Short-circuit connector, pitch: 5 mm, number of positions: 2, color: black

UKKB 10/2,5-PV - Double-level terminal block

2775485

<https://www.phoenixcontact.com/us/products/2775485>



KSS 10 - Short-circuit connector

0310541

<https://www.phoenixcontact.com/us/products/0310541>

Short-circuit connector, pitch: 10 mm, number of positions: 2, color: black



RPS - Reducing plug

0201647

<https://www.phoenixcontact.com/us/products/0201647>

Reducing plug, number of positions: 1, color: gray



UKKB 10/2,5-PV - Double-level terminal block



2775485

<https://www.phoenixcontact.com/us/products/2775485>

SBS10:UNBEDRUCKT - Marker card

1007248

<https://www.phoenixcontact.com/us/products/1007248>



Marker card, Card, white, unlabeled, can be labeled with: Marker pen, perforated, mounting type: snapped, snap into flat marker groove, for terminal block width: 10 mm, lettering field size: 6 x 10.1 mm, Number of individual labels: 250

NS 32 PERF 2000MM-VPE 10 - DIN rail perforated

1201002

<https://www.phoenixcontact.com/us/products/1201002>



DIN rail perforated, acc. to EN 60715, material: Steel, galvanized, passivated with a thick layer, G profile, color: silver, Pack of 10 (20 m)

UKKB 10/2,5-PV - Double-level terminal block

2775485

<https://www.phoenixcontact.com/us/products/2775485>



NS 32 UNPERF 2000MM-VPE 10 - DIN rail, unperforated

1201015

<https://www.phoenixcontact.com/us/products/1201015>



DIN rail, unperforated, acc. to EN 60715, material: Steel, galvanized, passivated with a thick layer, G profile, color: silver, Pack of 10 (20 m)

NS 35/ 7,5 PERF 2000MM - DIN rail perforated

0801733

<https://www.phoenixcontact.com/us/products/0801733>



DIN rail perforated, acc. to EN 60715, material: Steel, galvanized, passivated with a thick layer, Standard profile, color: silver, Pack of 25 (50 m)

UKKB 10/2,5-PV - Double-level terminal block

2775485

<https://www.phoenixcontact.com/us/products/2775485>



NS 35/ 7,5 UNPERF 2000MM - DIN rail, unperforated

0801681

<https://www.phoenixcontact.com/us/products/0801681>



DIN rail, unperforated, acc. to EN 60715, material: Steel, galvanized, passivated with a thick layer, Standard profile, color: silver, Pack of 25 (50 m)

NS 35/ 7,5 WH PERF 2000MM - DIN rail perforated

1204119

<https://www.phoenixcontact.com/us/products/1204119>



DIN rail perforated, acc. to EN 60715, material: Steel, Galvanized, white passivated, Standard profile, color: silver, Pack of 25 (50 m)

UKKB 10/2,5-PV - Double-level terminal block

2775485

<https://www.phoenixcontact.com/us/products/2775485>



NS 35/ 7,5 WH UNPERF 2000MM-VPE 10 - DIN rail, unperforated

1204122

<https://www.phoenixcontact.com/us/products/1204122>



DIN rail, unperforated, acc. to EN 60715, material: Steel, Galvanized, white passivated, Standard profile, color: silver, Pack of 10 (20 m)

NS 35/ 7,5 AL UNPERF 2000MM - DIN rail, unperforated

0801704

<https://www.phoenixcontact.com/us/products/0801704>



DIN rail, unperforated, acc. to EN 60715, material: Aluminum, uncoated, Standard profile, color: silver, Pack of 25 (50 m)

UKKB 10/2,5-PV - Double-level terminal block

2775485

<https://www.phoenixcontact.com/us/products/2775485>



NS 35/ 7,5 ZN PERF 2000MM - DIN rail perforated

1206421

<https://www.phoenixcontact.com/us/products/1206421>



DIN rail perforated, acc. to EN 60715, material: Steel, galvanized, Standard profile, color: silver, Pack of 25 (50 m)

NS 35/ 7,5 ZN UNPERF 2000MM - DIN rail, unperforated

1206434

<https://www.phoenixcontact.com/us/products/1206434>



DIN rail, unperforated, acc. to EN 60715, material: Steel, galvanized, Standard profile, color: silver, Pack of 25 (50 m)

UKKB 10/2,5-PV - Double-level terminal block

2775485

<https://www.phoenixcontact.com/us/products/2775485>



NS 35/ 7,5 CU UNPERF 2000MM-VPE 10 - DIN rail, unperforated

0801762

<https://www.phoenixcontact.com/us/products/0801762>



DIN rail, unperforated, acc. to EN 60715, material: Copper, uncoated, Standard profile, color: copper-colored, Pack of 10 (20 m)

NS 35/ 7,5 CAP - End cap

1206560

<https://www.phoenixcontact.com/us/products/1206560>

DIN rail end piece, for DIN rail NS 35/7.5



UKKB 10/2,5-PV - Double-level terminal block

2775485

<https://www.phoenixcontact.com/us/products/2775485>



NS 35/15 PERF 2000MM - DIN rail perforated

1201730

<https://www.phoenixcontact.com/us/products/1201730>



DIN rail perforated, similar to EN 60715, material: Steel, galvanized, passivated with a thick layer, Standard profile, color: silver, Pack of 25 (50 m)

NS 35/15 UNPERF 2000MM - DIN rail, unperforated

1201714

<https://www.phoenixcontact.com/us/products/1201714>



DIN rail, unperforated, similar to EN 60715, material: Steel, galvanized, passivated with a thick layer, Standard profile, color: silver, Pack of 25 (50 m)

UKKB 10/2,5-PV - Double-level terminal block

2775485

<https://www.phoenixcontact.com/us/products/2775485>



NS 35/15 WH PERF 2000MM - DIN rail perforated

0806602

<https://www.phoenixcontact.com/us/products/0806602>



DIN rail perforated, similar to EN 60715, material: Steel, Galvanized, white passivated, Standard profile, color: white, Pack of 25 (50 m)

NS 35/15 WH UNPERF 2000MM-VPE 10 - DIN rail, unperforated

1204135

<https://www.phoenixcontact.com/us/products/1204135>



DIN rail, unperforated, similar to EN 60715, material: Steel, Galvanized, white passivated, Standard profile, color: silver, Pack of 10 (20 m)

UKKB 10/2,5-PV - Double-level terminal block

2775485

<https://www.phoenixcontact.com/us/products/2775485>



NS 35/15 AL UNPERF 2000MM - DIN rail, unperforated

1201756

<https://www.phoenixcontact.com/us/products/1201756>



DIN rail, unperforated, similar to EN 60715, material: Aluminum, uncoated, Standard profile, color: silver

NS 35/15 ZN PERF 2000MM - DIN rail perforated

1206599

<https://www.phoenixcontact.com/us/products/1206599>



DIN rail perforated, similar to EN 60715, material: Steel, galvanized, Standard profile, color: silver, Pack of 25 (50 m)

UKKB 10/2,5-PV - Double-level terminal block

2775485

<https://www.phoenixcontact.com/us/products/2775485>



NS 35/15 ZN UNPERF 2000MM - DIN rail, unperforated

1206586

<https://www.phoenixcontact.com/us/products/1206586>



DIN rail, unperforated, similar to EN 60715, material: Steel, galvanized, Standard profile, color: silver, Pack of 25 (50 m)

NS 35/15 CU UNPERF 2000MM-VPE 10 - DIN rail, unperforated

1201895

<https://www.phoenixcontact.com/us/products/1201895>



DIN rail, unperforated, similar to EN 60715, material: Copper, uncoated, Standard profile, color: copper-colored, Pack of 10 (20 m)

UKKB 10/2,5-PV - Double-level terminal block

2775485

<https://www.phoenixcontact.com/us/products/2775485>



NS 35/15 CAP - End cap

1206573

<https://www.phoenixcontact.com/us/products/1206573>

DIN rail end piece, for DIN rail NS 35/15



NS 35/15-2,3 UNPERF 2000MM-VPE 10 - DIN rail, unperforated

1201798

<https://www.phoenixcontact.com/us/products/1201798>



DIN rail, unperforated, acc. to EN 60715, material: Steel, galvanized, passivated with a thick layer, Standard profile 2.3 mm, color: silver, Pack of 10 (20 m)

UKKB 10/2,5-PV - Double-level terminal block



2775485

<https://www.phoenixcontact.com/us/products/2775485>

ZB 5 :UNBEDRUCKT - Zack marker strip

1050004

<https://www.phoenixcontact.com/us/products/1050004>



Zack marker strip, Strip, white, unlabeled, can be labeled with: PLOTMARK, CMS-P1-PLOTTER, mounting type: snapped, for terminal block width: 5.2 mm, lettering field size: 5.1 x 10.5 mm, Number of individual labels: 10

ZB 5 CUS - Zack marker strip

0824962

<https://www.phoenixcontact.com/us/products/0824962>



Zack marker strip, can be ordered: Strip, white, labeled according to customer specifications, mounting type: snap into tall marker groove, for terminal block width: 5.2 mm, lettering field size: 5.15 x 10.5 mm, Number of individual labels: 10

UKKB 10/2,5-PV - Double-level terminal block



2775485

<https://www.phoenixcontact.com/us/products/2775485>

ZB 5,LGS:FORTL.ZAHLEN - Zack marker strip

1050017

<https://www.phoenixcontact.com/us/products/1050017>

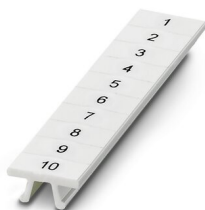


Zack marker strip, Strip, white, labeled, printed horizontally: consecutive numbers 1 ... 10, 11 ... 20, etc. up to 491 ... 500, mounting type: snapped, for terminal block width: 5.2 mm, lettering field size: 5.15 x 10.5 mm, Number of individual labels: 10

ZB 5,QR:FORTL.ZAHLEN - Zack marker strip

1050020

<https://www.phoenixcontact.com/us/products/1050020>



Zack marker strip, white, Printed vertically: consecutive numbers 1 ... 10, 11 ... 20, etc. up to 491 ... 500, mounting type: snapped, for terminal block width: 5.2 mm, lettering field size: 5.15 x 10.5 mm

UKKB 10/2,5-PV - Double-level terminal block



2775485

<https://www.phoenixcontact.com/us/products/2775485>

ZB 5,LGS:GLEICHE ZAHLEN - Zack marker strip

1050033

<https://www.phoenixcontact.com/us/products/1050033>

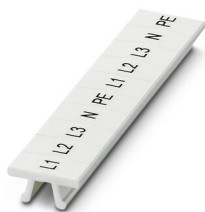


Zack marker strip, Strip, white, labeled, can be labeled with: CMS-P1-PLOTTER, printed horizontally: Identical numbers 1 or 2, etc. up to 100, mounting type: snapped, for terminal block width: 5.2 mm, lettering field size: 5.15 x 10.5 mm, Number of individual labels: 10

ZB 5,LGS:L1-N,PE - Zack marker strip

1050415

<https://www.phoenixcontact.com/us/products/1050415>



Zack marker strip, Strip, white, labeled, horizontal: L1, L2, L3, N, PE, L1, L2, L3, N, PE, mounting type: snapped, for terminal block width: 5.2 mm, lettering field size: 5.15 x 10.5 mm, Number of individual labels: 10

UKKB 10/2,5-PV - Double-level terminal block



2775485

<https://www.phoenixcontact.com/us/products/2775485>

UC-TM 5 - Marker for terminal blocks

0818108

<https://www.phoenixcontact.com/us/products/0818108>



Marker for terminal blocks, Sheet, white, unlabeled, can be labeled with: BLUEMARK ID COLOR, BLUEMARK ID, BLUEMARK CLED, PLOTMARK, CMS-P1-PLOTTER, mounting type: snapped, for terminal block width: 5.2 mm, lettering field size: 4.6 x 10.5 mm, Number of individual labels: 96

UC-TM 5 CUS - Marker for terminal blocks

0824581

<https://www.phoenixcontact.com/us/products/0824581>



Marker for terminal blocks, can be ordered: by sheet, white, labeled according to customer specifications, mounting type: snap into tall marker groove, for terminal block width: 5.2 mm, lettering field size: 10.5 x 4.6 mm, Number of individual labels: 96

UKKB 10/2,5-PV - Double-level terminal block



2775485

<https://www.phoenixcontact.com/us/products/2775485>

UCT-TM 5 - Marker for terminal blocks

0828734

<https://www.phoenixcontact.com/us/products/0828734>



Marker for terminal blocks, Sheet, white, unlabeled, can be labeled with: TOPMARK NEO, TOPMARK LASER, BLUEMARK ID COLOR, BLUEMARK ID, BLUEMARK CLED, THERMOMARK PRIME, THERMOMARK CARD 2.0, THERMOMARK CARD, mounting type: snapped, for terminal block width: 5.2 mm, lettering field size: 4.6 x 10.5 mm, Number of individual labels: 72

UCT-TM 5 CUS - Marker for terminal blocks

0829595

<https://www.phoenixcontact.com/us/products/0829595>



Marker for terminal blocks, can be ordered: by sheet, white, labeled according to customer specifications, mounting type: snap into tall marker groove, for terminal block width: 5.2 mm, lettering field size: 4.6 x 10.5 mm, Number of individual labels: 72

UKKB 10/2,5-PV - Double-level terminal block



2775485

<https://www.phoenixcontact.com/us/products/2775485>

GBS 5-25X12 - Group marker label for terminal marking

0810588

<https://www.phoenixcontact.com/us/products/0810588>



Group marker label, snaps onto terminal center for screw, spring-cage and quick connection terminal blocks, labeled with a 25 x 12 mm label or manually with the B-STIFT, in the foot part with ZB 5

GBS 5-25X5 - Group marker label for terminal marking

0829126

<https://www.phoenixcontact.com/us/products/0829126>



Group marking label, can be snapped into terminal center for screw, spring-cage, push-in, and fast connection terminal blocks, can be labeled with a 24 x 4 mm label or manually using B-STIFT, in the foot part with ZB 5

UKKB 10/2,5-PV - Double-level terminal block



2775485

<https://www.phoenixcontact.com/us/products/2775485>

STP 5-2-ZB - Marker carriers

3037643

<https://www.phoenixcontact.com/us/products/3037643>



Marker carriers, snaps into ST 2,5 spring-cage terminal blocks, can be marked with UC-TM 5, UC-TMF 5, UCT-TM 5, UCT-TMF 5, ZB 5, or ZBF 5, gray, unlabeled, mounting type: snapped

ZB 10:UNBEDRUCKT - Zack marker strip

1053001

<https://www.phoenixcontact.com/us/products/1053001>



Zack marker strip, Strip, white, unlabeled, can be labeled with: PLOTMARK, CMS-P1-PLOTTER, mounting type: snapped, for terminal block width: 10.2 mm, lettering field size: 10.5 x 10.15 mm, Number of individual labels: 10

UKKB 10/2,5-PV - Double-level terminal block



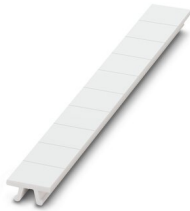
2775485

<https://www.phoenixcontact.com/us/products/2775485>

ZB 10 CUS - Zack marker strip

0824941

<https://www.phoenixcontact.com/us/products/0824941>



Zack marker strip, can be ordered: Strip, white, labeled according to customer specifications, mounting type: snap into tall marker groove, for terminal block width: 10.2 mm, lettering field size: 10,15 x 10,5 mm, Number of individual labels: 10

ZB10,LGS:FORTL.ZAHLEN - Zack marker strip

1053014

<https://www.phoenixcontact.com/us/products/1053014>



Zack marker strip, Strip, white, labeled, can be labeled with: CMS-P1-PLOTTER, printed horizontally: consecutive numbers 1 ... 10, 11 ... 20, etc. up to 91 ... 100, mounting type: snapped, for terminal block width: 10.2 mm, lettering field size: 10,15 x 10,5 mm, Number of individual labels: 10

UKKB 10/2,5-PV - Double-level terminal block



2775485

<https://www.phoenixcontact.com/us/products/2775485>

ZB10,QR:FORTL.ZAHLEN - Zack marker strip

1053027

<https://www.phoenixcontact.com/us/products/1053027>



Zack marker strip, Strip, white, labeled, can be labeled with: CMS-P1-PLOTTER, Printed vertically: consecutive numbers 1 ... 10, 11 ... 20, etc. up to 91 ... 100, mounting type: snapped, for terminal block width: 10.2 mm, lettering field size: 10,15 x 10,5 mm, Number of individual labels: 10

ZB10,LGS:L1-N,PE - Marker for terminal blocks

1053412

<https://www.phoenixcontact.com/us/products/1053412>



Marker for terminal blocks, Strip, white, labeled, can be labeled with: CMS-P1-PLOTTER, horizontal: L1, L2, L3, N, PE, L1, L2, L3, N, PE, mounting type: snapped, for terminal block width: 10.2 mm, lettering field size: 10,15 x 10,5 mm, Number of individual labels: 10

UKKB 10/2,5-PV - Double-level terminal block



2775485

<https://www.phoenixcontact.com/us/products/2775485>

ZB10,LGS:U-N - Marker for terminal blocks

1053438

<https://www.phoenixcontact.com/us/products/1053438>

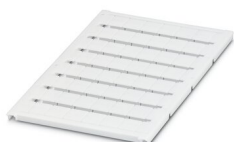


Marker for terminal blocks, Strip, white, labeled, can be labeled with: CMS-P1-PLOTTER, horizontal: U, V, W, N, GND, U, V, W, N, GND, mounting type: snapped, for terminal block width: 10.2 mm, lettering field size: 10,15 x 10,5 mm, Number of individual labels: 10

UC-TM 10 - Marker for terminal blocks

0818069

<https://www.phoenixcontact.com/us/products/0818069>



Marker for terminal blocks, Sheet, white, unlabeled, can be labeled with: BLUEMARK ID COLOR, BLUEMARK ID, BLUEMARK CLED, PLOTMARK, CMS-P1-PLOTTER, mounting type: snapped, for terminal block width: 10.2 mm, lettering field size: 9.6 x 10.5 mm, Number of individual labels: 48

UKKB 10/2,5-PV - Double-level terminal block

2775485

<https://www.phoenixcontact.com/us/products/2775485>



UC-TM 10 CUS - Marker for terminal blocks

0824605

<https://www.phoenixcontact.com/us/products/0824605>



Marker for terminal blocks, can be ordered: by sheet, white, labeled according to customer specifications, mounting type: snap into tall marker groove, for terminal block width: 10.2 mm, lettering field size: 9.6 x 10.5 mm, Number of individual labels: 48

UCT-TM 10 - Marker for terminal blocks

0829142

<https://www.phoenixcontact.com/us/products/0829142>



Marker for terminal blocks, Sheet, white, unlabeled, can be labeled with: TOPMARK NEO, TOPMARK LASER, BLUEMARK ID COLOR, BLUEMARK ID, BLUEMARK CLED, THERMOMARK PRIME, THERMOMARK CARD 2.0, THERMOMARK CARD, mounting type: snapped, for terminal block width: 10.2 mm, lettering field size: 8.9 x 9.6 mm, Number of individual labels: 36

UKKB 10/2,5-PV - Double-level terminal block

2775485

<https://www.phoenixcontact.com/us/products/2775485>



UCT-TM 10 CUS - Marker for terminal blocks

0829623

<https://www.phoenixcontact.com/us/products/0829623>



Marker for terminal blocks, can be ordered: by sheet, white, labeled according to customer specifications, mounting type: snap into tall marker groove, for terminal block width: 10.2 mm, lettering field size: 8.9 x 9.6 mm, Number of individual labels: 36

CLIPFIX 35 - End clamp

3022218

<https://www.phoenixcontact.com/us/products/3022218>



Quick mounting end clamp for NS 35/7,5 DIN rail or NS 35/15 DIN rail, with marking option, width: 9.5 mm, color: gray

UKKB 10/2,5-PV - Double-level terminal block



2775485

<https://www.phoenixcontact.com/us/products/2775485>

CLIPFIX 35-5 - End clamp

3022276

<https://www.phoenixcontact.com/us/products/3022276>

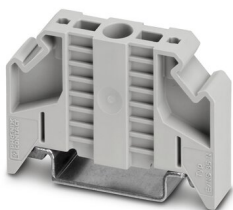


Quick mounting end clamp for NS 35/7,5 DIN rail or NS 35/15 DIN rail, with marking option, with parking option for FBS...5, FBS...6, KSS 5, KSS 6, width: 5.15 mm, color: gray

E/NS 35 N - End clamp

0800886

<https://www.phoenixcontact.com/us/products/0800886>



End clamp, width: 9.5 mm, color: gray

UKKB 10/2,5-PV - Double-level terminal block

2775485

<https://www.phoenixcontact.com/us/products/2775485>



PSBJ 4/15/6 FARBLOS - Female test connector

0303419

<https://www.phoenixcontact.com/us/products/0303419>



Female test connector, number of positions: 1, color: transparent

PSBJ 4/15/6 WH - Female test connector

0303312

<https://www.phoenixcontact.com/us/products/0303312>



Female test connector, number of positions: 1, color: white

UKKB 10/2,5-PV - Double-level terminal block

2775485

<https://www.phoenixcontact.com/us/products/2775485>



PSBJ 4/15/6 RD - Female test connector

0303325

<https://www.phoenixcontact.com/us/products/0303325>

Female test connector, number of positions: 1, color: red



PSBJ 4/15/6 BU - Female test connector

0303354

<https://www.phoenixcontact.com/us/products/0303354>

Female test connector, number of positions: 1, color: blue



UKKB 10/2,5-PV - Double-level terminal block

2775485

<https://www.phoenixcontact.com/us/products/2775485>



PSBJ 4/15/6 YE - Female test connector

0303367

<https://www.phoenixcontact.com/us/products/0303367>

Female test connector, number of positions: 1, color: yellow



PSBJ 4/15/6 GN - Female test connector

0303370

<https://www.phoenixcontact.com/us/products/0303370>

Female test connector, number of positions: 1, color: green



UKKB 10/2,5-PV - Double-level terminal block

2775485

<https://www.phoenixcontact.com/us/products/2775485>



PSBJ 4/15/6 VT - Female test connector

0303383

<https://www.phoenixcontact.com/us/products/0303383>



Female test connector, number of positions: 1, color: violet

PSBJ 4/15/6 GY - Female test connector

0303396

<https://www.phoenixcontact.com/us/products/0303396>



Female test connector, number of positions: 1, color: gray

UKKB 10/2,5-PV - Double-level terminal block

2775485

<https://www.phoenixcontact.com/us/products/2775485>



PSBJ 4/15/6 BK - Female test connector

0303406

<https://www.phoenixcontact.com/us/products/0303406>



Female test connector, number of positions: 1, color: black

PSBJ 3/13/4 - Female test connector

0201304

<https://www.phoenixcontact.com/us/products/0201304>



Female test connector, number of positions: 1, color: silver

UKKB 10/2,5-PV - Double-level terminal block

2775485

<https://www.phoenixcontact.com/us/products/2775485>



PSB 3/10/4 - Female test connector

0601292

<https://www.phoenixcontact.com/us/products/0601292>

Female test connector, number of positions: 1, color: silver



PSB 4/7/6 - Female test connector

0303299

<https://www.phoenixcontact.com/us/products/0303299>

Female test connector, number of positions: 1, color: silver



UKKB 10/2,5-PV - Double-level terminal block



2775485

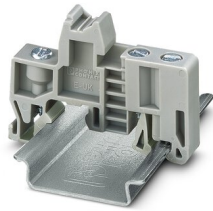
<https://www.phoenixcontact.com/us/products/2775485>

E/UK - End clamp

1201442

<https://www.phoenixcontact.com/us/products/1201442>

End clamp, material: PA, color: gray, Mounting on a DIN rail NS 32 or NS 35



E/UK 1 - End clamp

1201413

<https://www.phoenixcontact.com/us/products/1201413>

End clamps, for supporting the ends of double-level and three-level terminal blocks, width: 10 mm, color: gray



Phoenix Contact 2023 © - all rights reserved
<https://www.phoenixcontact.com>

Phoenix Contact USA
586 Fulling Mill Road
Middletown, PA 17057, United States
(+717) 944-1300
info@phoenixcon.com