

UKK 5 - Double-level terminal block



2774017

<https://www.phoenixcontact.com/us/products/2774017>

Please be informed that the data shown in this PDF document is generated from our online catalog. Please find the complete data in the user documentation. Our general terms of use for downloads are valid.



Double-level terminal block, nom. voltage: 500 V, nominal current: 32 A, connection method: Screw connection, 1st and 2nd level, Rated cross section: 4 mm², cross section: 0.2 mm² - 4 mm², mounting type: NS 35/7,5, NS 35/15, NS 32, color: gray

Your advantages

- Large-surface labeling option

Commercial data

Item number	2774017
Packing unit	1 pc
Minimum order quantity	1 pc
Sales key	BE12
Product key	BE1214
Catalog page	Page 473 (C-1-2019)
GTIN	4017918068301
Weight per piece (including packing)	15.156 g
Weight per piece (excluding packing)	14.412 g
Customs tariff number	85369010
Country of origin	CN

UKK 5 - Double-level terminal block



2774017

<https://www.phoenixcontact.com/us/products/2774017>

Technical data

Product properties

Product type	Multi-level terminal block
Number of connections	4
Number of rows	2
Potentials	2

Insulation characteristics

Overvoltage category	III
Degree of pollution	3

Electrical properties

Rated surge voltage	6 kV
Maximum power dissipation for nominal condition	1.02 W

Connection data

Number of connections per level	2
Nominal cross section	4 mm ²

1st and 2nd level

Screw thread	M3
Tightening torque	0.6 ... 0.8 Nm
Stripping length	8 mm
Connection in acc. with standard	IEC 60947-7-1
Conductor cross section rigid	0.2 mm ² ... 4 mm ²
Cross section AWG	24 ... 12 (converted acc. to IEC)
Conductor cross section flexible	0.2 mm ² ... 4 mm ²
Conductor cross section, flexible [AWG]	24 ... 12 (converted acc. to IEC)
Conductor cross-section flexible (ferrule without plastic sleeve)	0.25 mm ² ... 4 mm ²
Flexible conductor cross section (ferrule with plastic sleeve)	0.25 mm ² ... 2.5 mm ²
Cross-section with insertion bridge, rigid	4 mm ²
Cross-section with insertion bridge, flexible	2.5 mm ²
2 conductors with same cross section, solid	0.2 mm ² ... 1.5 mm ²
2 conductors with same cross section, flexible	0.2 mm ² ... 1.5 mm ²
2 conductors with same cross section, flexible, with ferrule without plastic sleeve	0.25 mm ² ... 1.5 mm ²
2 conductors with the same cross section, flexible, with TWIN ferrule with plastic sleeve	0.5 mm ² ... 1.5 mm ²
Nominal current	32 A
Maximum load current	32 A (with 4 mm ² conductor cross section)
Nominal voltage	500 V
Nominal cross section	4 mm ²

Dimensions

UKK 5 - Double-level terminal block



2774017

<https://www.phoenixcontact.com/us/products/2774017>

Width	6.2 mm
End cover width	2.5 mm
Height	56 mm
Depth on NS 32	67 mm
Depth on NS 35/7,5	62 mm
Depth on NS 35/15	69.5 mm

Material specifications

Color	gray
Flammability rating according to UL 94	V0
Insulating material group	I
Insulating material	PA
Static insulating material application in cold	-60 °C
Temperature index of insulation material (DIN EN 60216-1 (VDE 0304-21))	130 °C
Relative insulation material temperature index (Elec., UL 746 B)	130 °C
Fire protection for rail vehicles (DIN EN 45545-2) R22	HL 1 - HL 3
Fire protection for rail vehicles (DIN EN 45545-2) R23	HL 1 - HL 3
Fire protection for rail vehicles (DIN EN 45545-2) R24	HL 1 - HL 3
Fire protection for rail vehicles (DIN EN 45545-2) R26	HL 1 - HL 3
Calorimetric heat release NFPA 130 (ASTM E 1354)	28 MJ/kg
Surface flammability NFPA 130 (ASTM E 162)	passed
Specific optical density of smoke NFPA 130 (ASTM E 662)	passed
Smoke gas toxicity NFPA 130 (SMP 800C)	passed

Electrical tests

Surge voltage test

Test voltage setpoint	7.3 kV
Result	Test passed

Temperature-rise test

Requirement temperature-rise test	Increase in temperature ≤ 45 K
Result	Test passed
Short-time withstand current 4 mm ²	0.48 kA
Result	Test passed

Power-frequency withstand voltage

Test voltage setpoint	1.89 kV
Result	Test passed

Mechanical properties

Mechanical data

Open side panel	Yes
-----------------	-----

Mechanical tests

UKK 5 - Double-level terminal block



2774017

<https://www.phoenixcontact.com/us/products/2774017>

Mechanical strength

Result	Test passed
--------	-------------

Attachment on the carrier

DIN rail/fixing support	NS 32/NS 35
Test force setpoint	1 N
Result	Test passed

Test for conductor damage and slackening

Rotation speed	10 rpm
Revolutions	135
Conductor cross section/weight	0.2 mm ² / 0.2 kg
	4 mm ² / 0.9 kg
Result	Test passed

Environmental and real-life conditions

Needle-flame test

Time of exposure	30 s
Result	Test passed

Ambient conditions

Ambient temperature (operation)	-60 °C ... 105 °C (max. short-term operating temperature RTI Elec.)
Ambient temperature (storage/transport)	-25 °C ... 60 °C (for a short time, not exceeding 24 h, -60 °C to +70 °C)
Ambient temperature (assembly)	-5 °C ... 70 °C
Ambient temperature (actuation)	-5 °C ... 70 °C
Permissible humidity (storage/transport)	30 % ... 70 %

Standards and regulations

Connection in acc. with standard	IEC 60947-7-1
----------------------------------	---------------

Mounting

Mounting type	NS 35/7,5
	NS 35/15
	NS 32

UKK 5 - Double-level terminal block

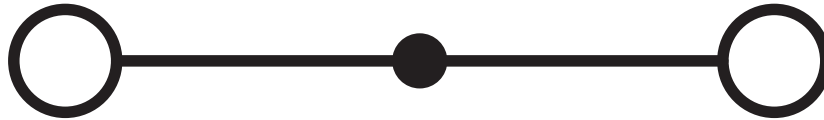


2774017

<https://www.phoenixcontact.com/us/products/2774017>

Drawings

Circuit diagram



UKK 5 - Double-level terminal block



2774017

<https://www.phoenixcontact.com/us/products/2774017>

Approvals

To download certificates, visit the product detail page: <https://www.phoenixcontact.com/us/products/2774017>

DNV

Approval ID: TAE00001CT



CSA

Approval ID: 13631

	Nominal voltage U_N	Nominal current I_N	Cross section AWG	Cross section mm^2
Use group B				
	300 V	30 A	28 - 10	-
Use group C				
	300 V	30 A	28 - 10	-



IECEE CB Scheme

Approval ID: NL-39955/A1

	Nominal voltage U_N	Nominal current I_N	Cross section AWG	Cross section mm^2
	32 V	500 A	-	- 4



EAC

Approval ID: RU C-DE.BL08.B.00534



cULus Recognized

Approval ID: E60425

	Nominal voltage U_N	Nominal current I_N	Cross section AWG	Cross section mm^2
Use group B				
	300 V	30 A	26 - 10	-
Use group C				
	300 V	30 A	26 - 10	-
Use group F				
	500 V	30 A	26 - 10	-
Use group D				
	600 V	5 A	26 - 10	-



KEMA-KEUR

Approval ID: 71-119849

	Nominal voltage U_N	Nominal current I_N	Cross section AWG	Cross section mm^2
	500 V	32 A	-	- 4

UKK 5 - Double-level terminal block



2774017

<https://www.phoenixcontact.com/us/products/2774017>



RS

Approval ID: 22.44.01.00083.250

UKK 5 - Double-level terminal block



2774017

<https://www.phoenixcontact.com/us/products/2774017>

Classifications

ECLASS

ECLASS-11.0	27141120
ECLASS-13.0	27250102

ETIM

ETIM 8.0	EC000897
----------	----------

UNSPSC

UNSPSC 21.0	39121400
-------------	----------

UKK 5 - Double-level terminal block



2774017

<https://www.phoenixcontact.com/us/products/2774017>

Environmental product compliance

China RoHS	Environmentally friendly use period: unlimited = EFUP-e
	No hazardous substances above threshold values

UKK 5 - Double-level terminal block



2774017

<https://www.phoenixcontact.com/us/products/2774017>

Accessories

i Note: Applying some accessories below might limit this product.

ISSBI 10- 6 - Bridge

0301505

<https://www.phoenixcontact.com/us/products/0301505>



Bridge, pitch: 6 mm, number of positions: 10, color: silver

i Max. current carrying capacity: 24 A

LB 10-6 BU - Bridge

0202280

<https://www.phoenixcontact.com/us/products/0202280>



Bridge, pitch: 6 mm, number of positions: 10, color: blue

UKK 5 - Double-level terminal block

2774017

<https://www.phoenixcontact.com/us/products/2774017>



LB 10-6 RD - Bridge

0202293

<https://www.phoenixcontact.com/us/products/0202293>

Bridge, pitch: 6 mm, number of positions: 10, color: red



LB 10-6 GY - Bridge

0202358

<https://www.phoenixcontact.com/us/products/0202358>

Bridge, pitch: 6 mm, number of positions: 10, color: gray



UKK 5 - Double-level terminal block

2774017

<https://www.phoenixcontact.com/us/products/2774017>



LB 100-6 GY - Bridge

0202345

<https://www.phoenixcontact.com/us/products/0202345>

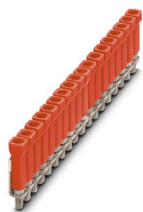


Bridge, pitch: 6 mm, number of positions: 100, color: gray

LB 100-6 RD - Bridge

0202316

<https://www.phoenixcontact.com/us/products/0202316>



Bridge, number of positions: 100, color: red

UKK 5 - Double-level terminal block

2774017

<https://www.phoenixcontact.com/us/products/2774017>



LB 100-6 BU - Bridge

0202303

<https://www.phoenixcontact.com/us/products/0202303>



Bridge, number of positions: 100, color: blue


FBI 10- 6 - Fixed bridge

0203250

<https://www.phoenixcontact.com/us/products/0203250>



Fixed bridge, pitch: 6.2 mm, number of positions: 10, color: silver

 Max. current carrying capacity: 32 A

UKK 5 - Double-level terminal block

2774017

<https://www.phoenixcontact.com/us/products/2774017>



FBI 20- 6 - Fixed bridge

0201867

<https://www.phoenixcontact.com/us/products/0201867>

Fixed bridge, pitch: 6.2 mm, number of positions: 20, color: silver



FBI 100- 6 - Fixed bridge

0201650

<https://www.phoenixcontact.com/us/products/0201650>

Fixed bridge, pitch: 6.2 mm, number of positions: 100, color: silver



UKK 5 - Double-level terminal block

2774017

<https://www.phoenixcontact.com/us/products/2774017>


EB 2- 6 - Insertion bridge

0201155

<https://www.phoenixcontact.com/us/products/0201155>

Insertion bridge, pitch: 6.2 mm, number of positions: 2, color: gray



 Max. current carrying capacity: 30 A

EB 3- 6 - Insertion bridge

0201142

<https://www.phoenixcontact.com/us/products/0201142>

Insertion bridge, pitch: 6.2 mm, number of positions: 3, color: gray



 Max. current carrying capacity: 30 A

UKK 5 - Double-level terminal block

2774017

<https://www.phoenixcontact.com/us/products/2774017>




EB 10- 6 - Insertion bridge

0201139

<https://www.phoenixcontact.com/us/products/0201139>



Insertion bridge, pitch: 6.2 mm, number of positions: 10, color: gray

 Max. current carrying capacity: 30 A

SBRN 2-7 - Switching jumper

1413230

<https://www.phoenixcontact.com/us/products/1413230>



Switching jumper, pitch: 7 mm, number of positions: 2, color: silver

UKK 5 - Double-level terminal block

2774017

<https://www.phoenixcontact.com/us/products/2774017>



USBR 2-7 - Switching jumper

2303239

<https://www.phoenixcontact.com/us/products/2303239>



Switching jumper, pitch: 7 mm, number of positions: 2, color: silver

USBRJ 2-7 - Switching jumper

2305538

<https://www.phoenixcontact.com/us/products/2305538>



Switching jumper, number of positions: 2, color: silver

UKK 5 - Double-level terminal block

2774017

<https://www.phoenixcontact.com/us/products/2774017>

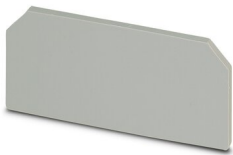


DP-UKK 3/5 - Spacer plate

2770794

<https://www.phoenixcontact.com/us/products/2770794>

Spacer plate, to compensate for level offsets, length: 56 mm, width: 2.5 mm, height: 56 mm, color: gray



DG-UKK 3/5 - Spacer plate

2770817

<https://www.phoenixcontact.com/us/products/2770817>

Spacer plate, to compensate for level offsets, length: 56 mm, width: 2.5 mm, height: 56 mm, color: gray



UKK 5 - Double-level terminal block

2774017

<https://www.phoenixcontact.com/us/products/2774017>



D-UKK 3/5 - End cover

2770024

<https://www.phoenixcontact.com/us/products/2770024>

End cover, length: 56 mm, width: 2.5 mm, height: 56 mm, color: gray



WS 5- 6 - Warning label

1004403

<https://www.phoenixcontact.com/us/products/1004403>

Warning plate, with 2 plastic screws, across 5 terminal blocks, pitch 6 mm



UKK 5 - Double-level terminal block

2774017

<https://www.phoenixcontact.com/us/products/2774017>



WS 4- 6 - Warning label

1004209

<https://www.phoenixcontact.com/us/products/1004209>

Warning plate, with 2 plastic screws, across 4 terminal blocks, pitch 6 mm



WS 3- 6 - Warning label

1004115

<https://www.phoenixcontact.com/us/products/1004115>

Warning plate, with 2 plastic screws, across 3 terminal blocks, pitch 6 mm



UKK 5 - Double-level terminal block

2774017

<https://www.phoenixcontact.com/us/products/2774017>



FB-150 METER - Fixed bridge

0201595

<https://www.phoenixcontact.com/us/products/0201595>



Cross connection rail, for fixed bridging of identical inputs and outputs, made of Cu, nickel-plated, 1 m long

KSS 3- 6 - Short-circuit connector

0309523

<https://www.phoenixcontact.com/us/products/0309523>



Short-circuit connector, pitch: 6 mm, number of positions: 3, color: black

UKK 5 - Double-level terminal block

2774017

<https://www.phoenixcontact.com/us/products/2774017>



KSS 6 - Short-circuit connector

0301547

<https://www.phoenixcontact.com/us/products/0301547>



Short-circuit connector, pitch: 6 mm, number of positions: 2, color: black

PS-UKK 5 - Test plugs

3000625

<https://www.phoenixcontact.com/us/products/3000625>



Test plugs, number of positions: 10, color: red

UKK 5 - Double-level terminal block

2774017

<https://www.phoenixcontact.com/us/products/2774017>



PS-UKK/E - Test plugs

3000641

<https://www.phoenixcontact.com/us/products/3000641>



Test plugs, number of positions: 1, color: red

RPS - Reducing plug

0201647

<https://www.phoenixcontact.com/us/products/0201647>



Reducing plug, number of positions: 1, color: gray

UKK 5 - Double-level terminal block

2774017

<https://www.phoenixcontact.com/us/products/2774017>



TS-KK 3 - Separating plate

2770215

<https://www.phoenixcontact.com/us/products/2770215>



Separating plate, length: 14 mm, width: 0.5 mm, height: 14 mm, color: gray

ATP-UKK 3/5 - Partition plate

2778521

<https://www.phoenixcontact.com/us/products/2778521>



Partition plate, length: 64 mm, width: 2.5 mm, height: 64 mm, color: gray

UKK 5 - Double-level terminal block

2774017

<https://www.phoenixcontact.com/us/products/2774017>



SBS 6:UNBEDRUCKT - Marker card

1007222

<https://www.phoenixcontact.com/us/products/1007222>



Marker card, Card, white, unlabeled, can be labeled with: Marker pen, mounting type: snapped, snap into flat marker groove, for terminal block width: 6 mm, lettering field size: 6 x 6.1 mm, Number of individual labels: 250

IS-K 4 - Bridge bar isolator

1302338

<https://www.phoenixcontact.com/us/products/1302338>



Bridge bar isolator, color: gray

UKK 5 - Double-level terminal block

2774017

<https://www.phoenixcontact.com/us/products/2774017>



SF-SL 0,6X3,5-100 S-VDE - Screwdriver

1212587

<https://www.phoenixcontact.com/us/products/1212587>



Actuation tool, for ST terminal blocks, VDE insulated, with slimmer insulation integrated in the blade, also suitable for use as a bladed screwdriver, size: 0.6 x 3.5 x 100 mm, 2-component grip, with non-slip grip

NS 32 PERF 2000MM-VPE 10 - DIN rail perforated

1201002

<https://www.phoenixcontact.com/us/products/1201002>



DIN rail perforated, acc. to EN 60715, material: Steel, galvanized, passivated with a thick layer, G profile, color: silver, Pack of 10 (20 m)

UKK 5 - Double-level terminal block

2774017

<https://www.phoenixcontact.com/us/products/2774017>



NS 32 UNPERF 2000MM-VPE 10 - DIN rail, unperforated

1201015

<https://www.phoenixcontact.com/us/products/1201015>



DIN rail, unperforated, acc. to EN 60715, material: Steel, galvanized, passivated with a thick layer, G profile, color: silver, Pack of 10 (20 m)

NS 35/ 7,5 PERF 2000MM - DIN rail perforated

0801733

<https://www.phoenixcontact.com/us/products/0801733>



DIN rail perforated, acc. to EN 60715, material: Steel, galvanized, passivated with a thick layer, Standard profile, color: silver, Pack of 25 (50 m)

UKK 5 - Double-level terminal block

2774017

<https://www.phoenixcontact.com/us/products/2774017>



NS 35/ 7,5 UNPERF 2000MM - DIN rail, unperforated

0801681

<https://www.phoenixcontact.com/us/products/0801681>



DIN rail, unperforated, acc. to EN 60715, material: Steel, galvanized, passivated with a thick layer, Standard profile, color: silver, Pack of 25 (50 m)

NS 35/ 7,5 WH PERF 2000MM - DIN rail perforated

1204119

<https://www.phoenixcontact.com/us/products/1204119>



DIN rail perforated, acc. to EN 60715, material: Steel, Galvanized, white passivated, Standard profile, color: silver, Pack of 25 (50 m)

UKK 5 - Double-level terminal block

2774017

<https://www.phoenixcontact.com/us/products/2774017>



NS 35/ 7,5 WH UNPERF 2000MM-VPE 10 - DIN rail, unperforated

1204122

<https://www.phoenixcontact.com/us/products/1204122>



DIN rail, unperforated, acc. to EN 60715, material: Steel, Galvanized, white passivated, Standard profile, color: silver, Pack of 10 (20 m)

NS 35/ 7,5 AL UNPERF 2000MM - DIN rail, unperforated

0801704

<https://www.phoenixcontact.com/us/products/0801704>



DIN rail, unperforated, acc. to EN 60715, material: Aluminum, uncoated, Standard profile, color: silver, Pack of 25 (50 m)

UKK 5 - Double-level terminal block

2774017

<https://www.phoenixcontact.com/us/products/2774017>



NS 35/ 7,5 ZN PERF 2000MM - DIN rail perforated

1206421

<https://www.phoenixcontact.com/us/products/1206421>



DIN rail perforated, acc. to EN 60715, material: Steel, galvanized, Standard profile, color: silver, Pack of 25 (50 m)

NS 35/ 7,5 ZN UNPERF 2000MM - DIN rail, unperforated

1206434

<https://www.phoenixcontact.com/us/products/1206434>



DIN rail, unperforated, acc. to EN 60715, material: Steel, galvanized, Standard profile, color: silver, Pack of 25 (50 m)

UKK 5 - Double-level terminal block

2774017

<https://www.phoenixcontact.com/us/products/2774017>



NS 35/ 7,5 CU UNPERF 2000MM-VPE 10 - DIN rail, unperforated

0801762

<https://www.phoenixcontact.com/us/products/0801762>



DIN rail, unperforated, acc. to EN 60715, material: Copper, uncoated, Standard profile, color: copper-colored, Pack of 10 (20 m)

NS 35/ 7,5 CAP - End cap

1206560

<https://www.phoenixcontact.com/us/products/1206560>

DIN rail end piece, for DIN rail NS 35/7.5



UKK 5 - Double-level terminal block

2774017

<https://www.phoenixcontact.com/us/products/2774017>



NS 35/15 PERF 2000MM - DIN rail perforated

1201730

<https://www.phoenixcontact.com/us/products/1201730>



DIN rail perforated, similar to EN 60715, material: Steel, galvanized, passivated with a thick layer, Standard profile, color: silver, Pack of 25 (50 m)

NS 35/15 UNPERF 2000MM - DIN rail, unperforated

1201714

<https://www.phoenixcontact.com/us/products/1201714>



DIN rail, unperforated, similar to EN 60715, material: Steel, galvanized, passivated with a thick layer, Standard profile, color: silver, Pack of 25 (50 m)

UKK 5 - Double-level terminal block

2774017

<https://www.phoenixcontact.com/us/products/2774017>



NS 35/15 WH PERF 2000MM - DIN rail perforated

0806602

<https://www.phoenixcontact.com/us/products/0806602>



DIN rail perforated, similar to EN 60715, material: Steel, Galvanized, white passivated, Standard profile, color: white, Pack of 25 (50 m)

NS 35/15 WH UNPERF 2000MM-VPE 10 - DIN rail, unperforated

1204135

<https://www.phoenixcontact.com/us/products/1204135>



DIN rail, unperforated, similar to EN 60715, material: Steel, Galvanized, white passivated, Standard profile, color: silver, Pack of 10 (20 m)

UKK 5 - Double-level terminal block

2774017

<https://www.phoenixcontact.com/us/products/2774017>



NS 35/15 AL UNPERF 2000MM - DIN rail, unperforated

1201756

<https://www.phoenixcontact.com/us/products/1201756>



DIN rail, unperforated, similar to EN 60715, material: Aluminum, uncoated, Standard profile, color: silver

NS 35/15 ZN PERF 2000MM - DIN rail perforated

1206599

<https://www.phoenixcontact.com/us/products/1206599>



DIN rail perforated, similar to EN 60715, material: Steel, galvanized, Standard profile, color: silver, Pack of 25 (50 m)

UKK 5 - Double-level terminal block

2774017

<https://www.phoenixcontact.com/us/products/2774017>



NS 35/15 ZN UNPERF 2000MM - DIN rail, unperforated

1206586

<https://www.phoenixcontact.com/us/products/1206586>



DIN rail, unperforated, similar to EN 60715, material: Steel, galvanized, Standard profile, color: silver, Pack of 25 (50 m)

NS 35/15 CU UNPERF 2000MM-VPE 10 - DIN rail, unperforated

1201895

<https://www.phoenixcontact.com/us/products/1201895>



DIN rail, unperforated, similar to EN 60715, material: Copper, uncoated, Standard profile, color: copper-colored, Pack of 10 (20 m)

UKK 5 - Double-level terminal block

2774017

<https://www.phoenixcontact.com/us/products/2774017>



NS 35/15 CAP - End cap

1206573

<https://www.phoenixcontact.com/us/products/1206573>

DIN rail end piece, for DIN rail NS 35/15



NS 35/15-2,3 UNPERF 2000MM-VPE 10 - DIN rail, unperforated

1201798

<https://www.phoenixcontact.com/us/products/1201798>



DIN rail, unperforated, acc. to EN 60715, material: Steel, galvanized, passivated with a thick layer, Standard profile 2.3 mm, color: silver, Pack of 10 (20 m)

UKK 5 - Double-level terminal block

2774017

<https://www.phoenixcontact.com/us/products/2774017>



ZB 6:UNBEDRUCKT - Zack marker strip

1051003

<https://www.phoenixcontact.com/us/products/1051003>



Zack marker strip, Strip, white, unlabeled, can be labeled with: PLOTMARK, CMS-P1-PLOTTER, mounting type: snapped, for terminal block width: 6.2 mm, lettering field size: 6.15 x 10.5 mm, Number of individual labels: 10

ZB 6 CUS - Zack marker strip

0824992

<https://www.phoenixcontact.com/us/products/0824992>



Zack marker strip, can be ordered: Strip, white, labeled according to customer specifications, mounting type: snap into tall marker groove, for terminal block width: 6.2 mm, lettering field size: 6.15 x 10.5 mm, Number of individual labels: 10

UKK 5 - Double-level terminal block

2774017

<https://www.phoenixcontact.com/us/products/2774017>

ZB 6,LGS:FORTL.ZAHLEN - Zack marker strip

1051016

<https://www.phoenixcontact.com/us/products/1051016>

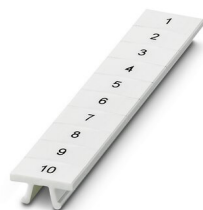


Zack marker strip, Strip, white, labeled, can be labeled with: CMS-P1-PLOTTER, printed horizontally: consecutive numbers 1 ... 10, 11 ... 20, etc. up to 491 ... 500, mounting type: snapped, for terminal block width: 6.2 mm, lettering field size: 6. 15 x 10.5 mm, Number of individual labels: 10

ZB 6,QR:FORTL.ZAHLEN - Zack marker strip

1051029

<https://www.phoenixcontact.com/us/products/1051029>



Zack marker strip, Strip, white, labeled, can be labeled with: CMS-P1-PLOTTER, Printed vertically: consecutive numbers 1 ... 10, 11 ... 20, etc. up to 491 ... 500, mounting type: snapped, for terminal block width: 6.2 mm, lettering field size: 6. 15 x 10.5 mm, Number of individual labels: 10

UKK 5 - Double-level terminal block

2774017

<https://www.phoenixcontact.com/us/products/2774017>



ZB 6,LGS:GLEICHE ZAHLEN - Zack marker strip

1051032

<https://www.phoenixcontact.com/us/products/1051032>



Zack marker strip, Strip, white, labeled, can be labeled with: CMS-P1-PLOTTER, printed horizontally: Identical numbers 1 or 2, etc. up to 100, mounting type: snapped, for terminal block width: 6.2 mm, lettering field size: 6.15 x 10.5 mm, Number of individual labels: 10

ZB 6,LGS:L1-N,PE - Marker for terminal blocks

1051414

<https://www.phoenixcontact.com/us/products/1051414>



Marker for terminal blocks, Strip, white, labeled, can be labeled with: CMS-P1-PLOTTER, horizontal: L1, L2, L3, N, PE, L1, L2, L3, N, PE, mounting type: snapped, for terminal block width: 6.2 mm, lettering field size: 6.15 x 10.5 mm, Number of individual labels: 10

UKK 5 - Double-level terminal block

2774017

<https://www.phoenixcontact.com/us/products/2774017>



ZB 6,LGS:U-N - Marker for terminal blocks

1051430

<https://www.phoenixcontact.com/us/products/1051430>



Marker for terminal blocks, Strip, white, labeled, can be labeled with: CMS-P1-PLOTTER, printed horizontally: U, V, W, N, GND, U, V, W, N, GND, mounting type: snapped, for terminal block width: 6.2 mm, lettering field size: 6.15 x 10.5 mm, Number of individual labels: 10

UC-TM 6 - Marker for terminal blocks

0818085

<https://www.phoenixcontact.com/us/products/0818085>



Marker for terminal blocks, Sheet, white, unlabeled, can be labeled with: BLUEMARK ID COLOR, BLUEMARK ID, BLUEMARK CLED, PLOTMARK, CMS-P1-PLOTTER, mounting type: snapped, for terminal block width: 6.2 mm, lettering field size: 5.6 x 10.5 mm, Number of individual labels: 80

UKK 5 - Double-level terminal block

2774017

<https://www.phoenixcontact.com/us/products/2774017>



UC-TM 6 CUS - Marker for terminal blocks

0824589

<https://www.phoenixcontact.com/us/products/0824589>



Marker for terminal blocks, can be ordered: by sheet, white, labeled according to customer specifications, mounting type: snap into tall marker groove, for terminal block width: 6.2 mm, lettering field size: 5.6 x 10.5 mm, Number of individual labels: 80

UCT-TM 6 - Marker for terminal blocks

0828736

<https://www.phoenixcontact.com/us/products/0828736>



Marker for terminal blocks, Sheet, white, unlabeled, can be labeled with: TOPMARK NEO, TOPMARK LASER, BLUEMARK ID COLOR, BLUEMARK ID, BLUEMARK CLED, THERMOMARK PRIME, THERMOMARK CARD 2.0, THERMOMARK CARD, mounting type: snapped, for terminal block width: 6.2 mm, lettering field size: 5.6 x 10.5 mm, Number of individual labels: 60

UKK 5 - Double-level terminal block

2774017

<https://www.phoenixcontact.com/us/products/2774017>



UCT-TM 6 CUS - Marker for terminal blocks

0829602

<https://www.phoenixcontact.com/us/products/0829602>



Marker for terminal blocks, can be ordered: by sheet, white, labeled according to customer specifications, mounting type: snap into tall marker groove, for terminal block width: 6.2 mm, lettering field size: 5.6 x 10.5 mm, Number of individual labels: 60

CLIPFIX 35 - End clamp

3022218

<https://www.phoenixcontact.com/us/products/3022218>



Quick mounting end clamp for NS 35/7,5 DIN rail or NS 35/15 DIN rail, with marking option, width: 9.5 mm, color: gray

UKK 5 - Double-level terminal block

2774017

<https://www.phoenixcontact.com/us/products/2774017>



CLIPFIX 35-5 - End clamp

3022276

<https://www.phoenixcontact.com/us/products/3022276>

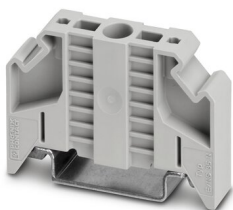


Quick mounting end clamp for NS 35/7,5 DIN rail or NS 35/15 DIN rail, with marking option, with parking option for FBS...5, FBS...6, KSS 5, KSS 6, width: 5.15 mm, color: gray

E/NS 35 N - End clamp

0800886

<https://www.phoenixcontact.com/us/products/0800886>



End clamp, width: 9.5 mm, color: gray

UKK 5 - Double-level terminal block

2774017

<https://www.phoenixcontact.com/us/products/2774017>



PSBJ 3/13/4 - Female test connector

0201304

<https://www.phoenixcontact.com/us/products/0201304>

Female test connector, number of positions: 1, color: silver



PSB 3/10/4 - Female test connector

0601292

<https://www.phoenixcontact.com/us/products/0601292>

Female test connector, number of positions: 1, color: silver



UKK 5 - Double-level terminal block

2774017

<https://www.phoenixcontact.com/us/products/2774017>



E/UK - End clamp

1201442

<https://www.phoenixcontact.com/us/products/1201442>

End clamp, material: PA, color: gray, Mounting on a DIN rail NS 32 or NS 35



E/UK 1 - End clamp

1201413

<https://www.phoenixcontact.com/us/products/1201413>

End clamps, for supporting the ends of double-level and three-level terminal blocks, width: 10 mm, color: gray



Phoenix Contact 2023 © - all rights reserved
<https://www.phoenixcontact.com>

Phoenix Contact USA
586 Fulling Mill Road
Middletown, PA 17057, United States
(+717) 944-1300
info@phoenixcon.com